



ELITE PLUS COLLECTION

60x120 CM





JOHNSON VITRIFIED TILES COLLECTION

60X120 cm Vitrified Tiles

Johnson Vitrified Tiles Collection offers the most comprehensive range of quality tiles suitable for a wide range of interior styles and applications. Available in a size of 60 x 120 cm Johnson Vitrified Tile collection exhibits variety of colours, looks and finishes such as polished, matt, satin, wood and newly introduced glamour, exotic, radiant, carwing and special carwing.

Ever evolving and ever inspiring, the collection will leave you spoilt for choice. Johnson Vitrified Tiles will lend unparalleled aesthetic appeal to your interior spaces.



**Robust
Vitrified Body**



**For Walls &
Floor**



**High Quality
Glazing**



**Digitally
Printed**



**Multiple Surface
Finishes**

PLANEX

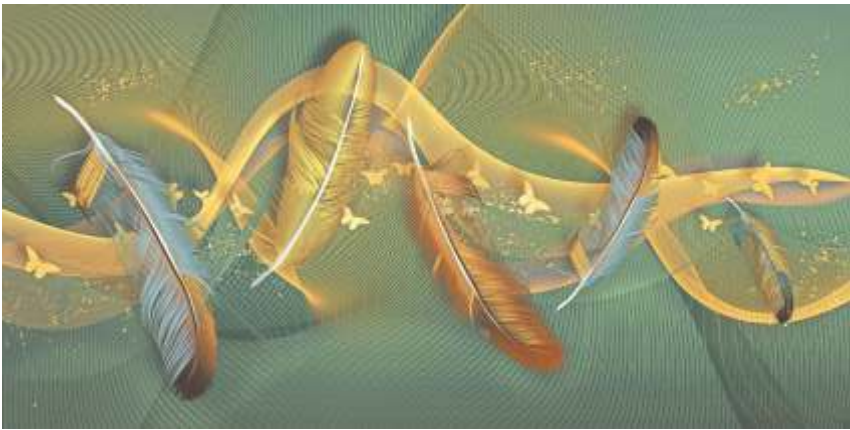
60X120

GLAMOUR (HIGH GLOSS - SPL COLOR)	06
EXOTIC (HIGH GLOSS)	12
MULTI CARWING (CARWING - SPL COLOR)	20
CARWING	22
RADIANT (POLISHED - SPL COLOR)	32
POLISHED	38
GLANCE (SATIN)	70
MATT	74
SATIN MATT	84
MATT RUSTIC PUNCH	86
SUGAR	90
TECHNICAL & PACKING DETAILS	98
BRANCH & EC DETAILS	99

Colors shown are as accurate as the limitations of the printing process will allow. Prospective customers are advised to inspect a sample of the tile before ordering. Every effort has been made to ensure the accuracy of the information given. However, the company reserves the right to change the specifications without prior notice. Sometimes, variations in shade or size may occur which is inherent to the ceramic industry. Before fixing the tiles, we urge you to read and follow the fixing instructions given on the carton box of the tiles. The company will not take any responsibility and will not accept any complaints of shade, size or planarity once the tiles have been fixed.

Although every effort is made to ascertain that all the information provided in this brochure is accurate before printing, errors may still happen. Please contact the local branch office for updated information before placing orders. The information contained in this catalog is given in good faith. The Company takes no liability on account of any loss or damage either consequential or otherwise as a result of the information provided therein.

CHANNON LIME



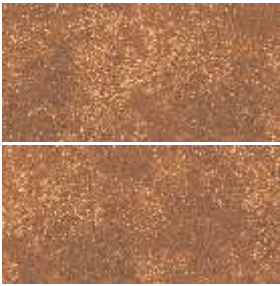
CIMMERIAN BLUE



RANDOM PHASES



CIMMERIAN COTTO

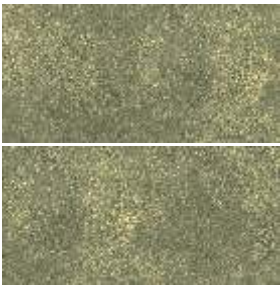


RANDOM PHASES





CIMMERIAN GREEN



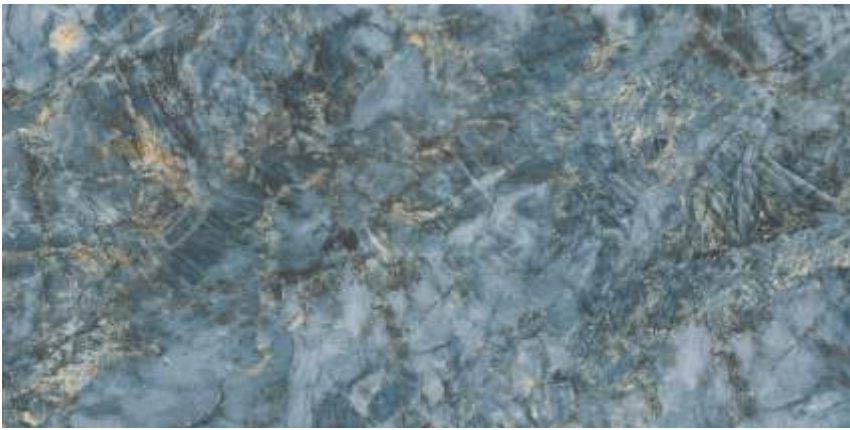
RANDOM PHASES

DAISLEX TEAL



RANDOM PHASES

GLASSCO BLISS



RANDOM PHASES

KETTON GREY



360°
View



KETTON GREY DECOR



360°
View



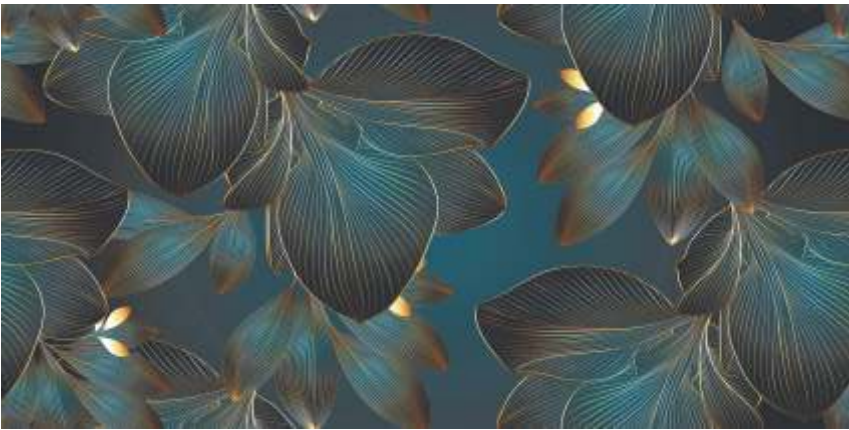
LANES BLUE



360°
View



LANES BLUE DECOR



360°
View



MABINA ANANT



360°
View



RANDOM PHASES

VICTOR BLUE

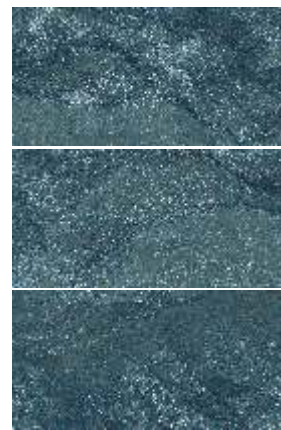


360°
View



RANDOM PHASES

VOWELL BLUE

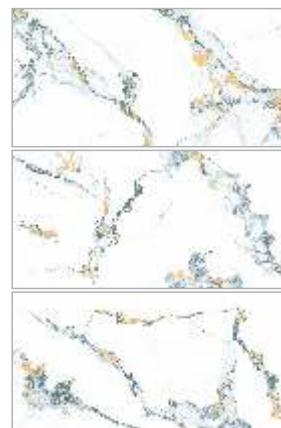
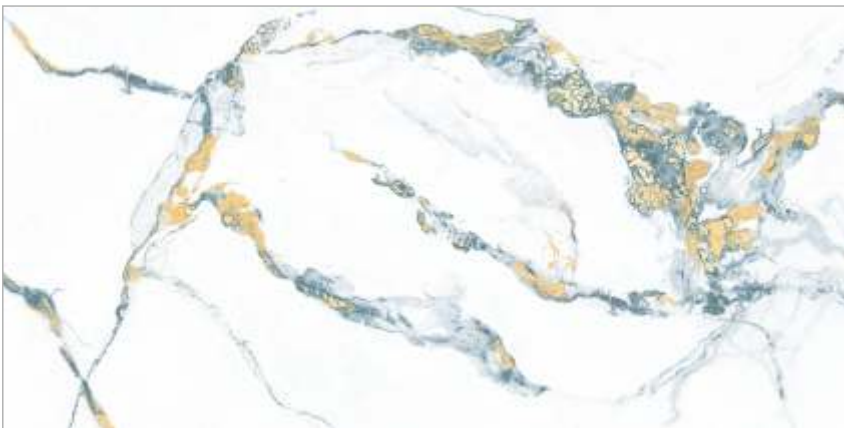


360°
View



RANDOM PHASES

WILKIN AQUA



360°
View



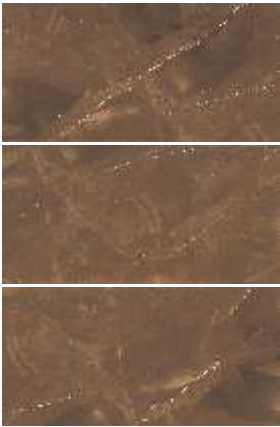
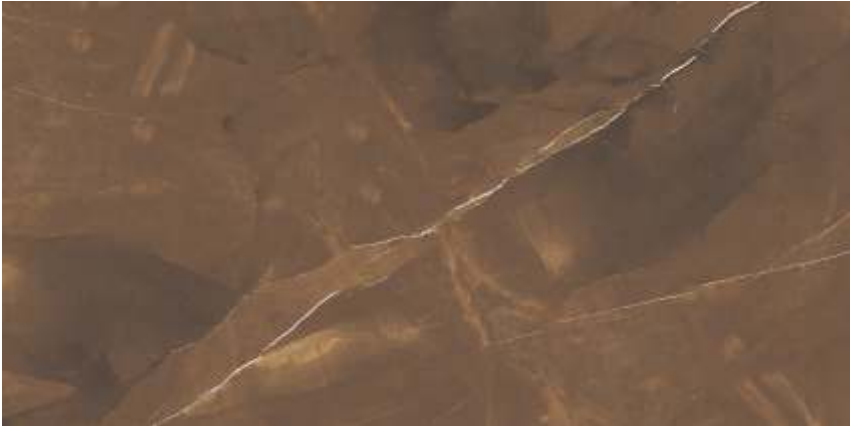
RANDOM PHASES

AGARD BLISS



RANDOM PHASES

AMONITE BROWN



RANDOM PHASES

ANANT BRECIA



RANDOM PHASES

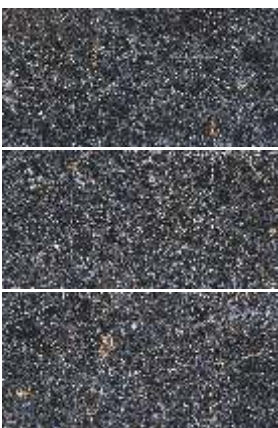
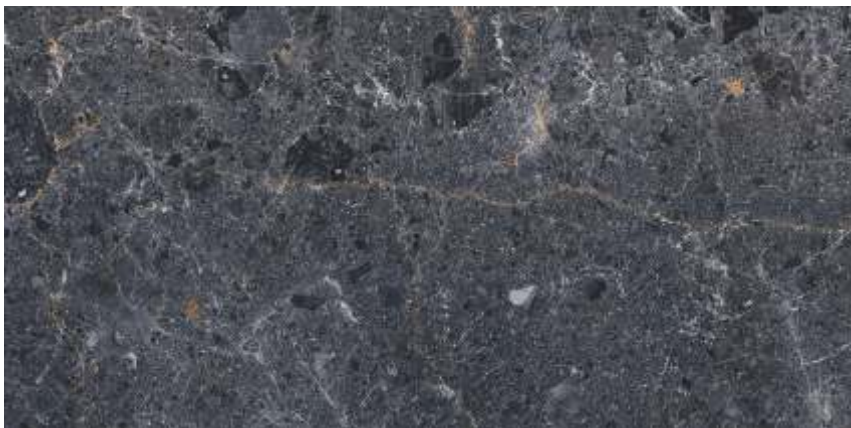


BREWIN BLACK



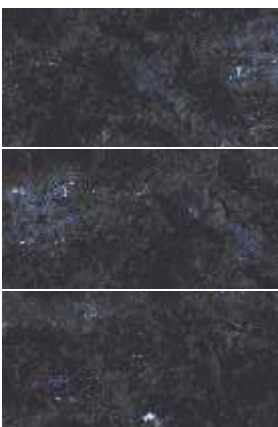
RANDOM PHASES

BUDAPEST BLUE



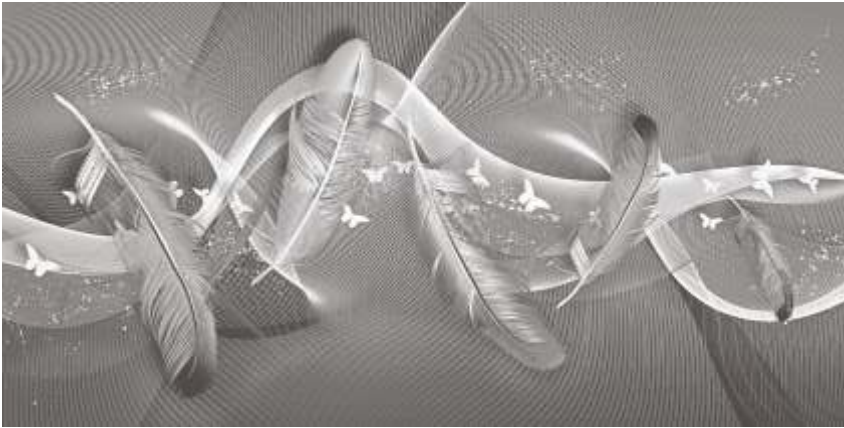
RANDOM PHASES

CASPIAN BLUE



RANDOM PHASES

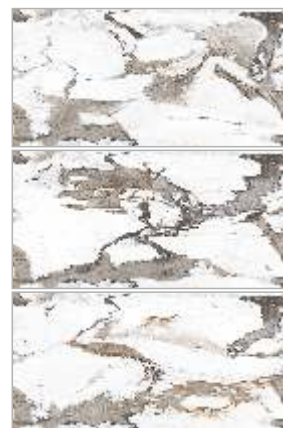
CHANNON GREY



360°
View



CUBIN ANANT

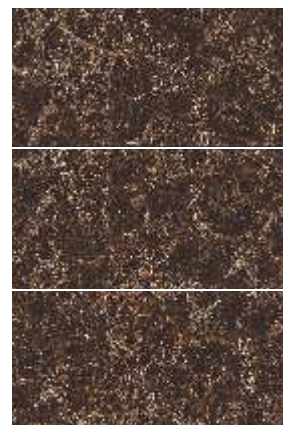


360°
View



RANDOM PHASES

EMPERADOR BRONZE



360°
View



RANDOM PHASES

FRESTON NERO



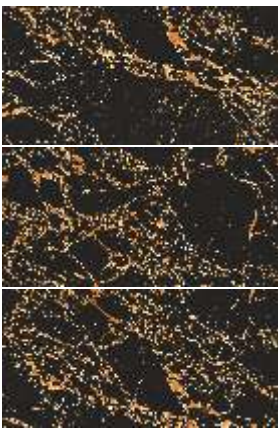
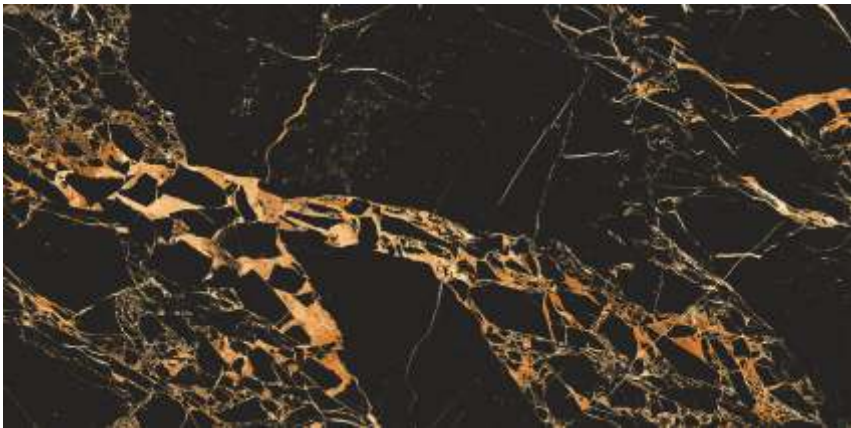
RANDOM PHASES

GOLVIN BLACK



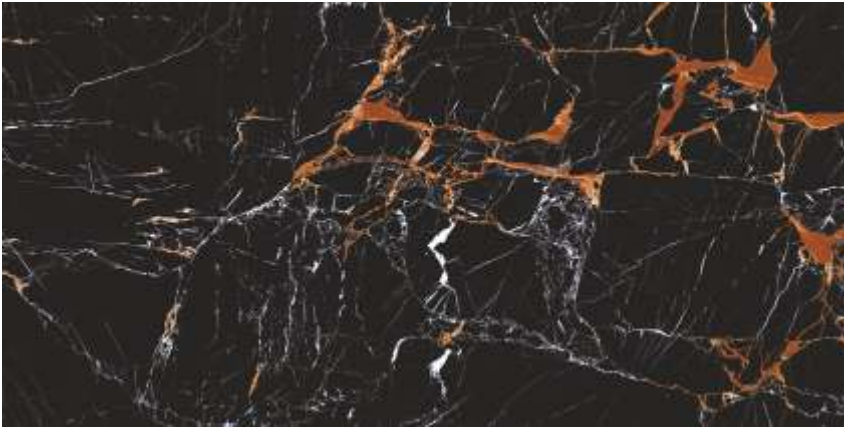
RANDOM PHASES

LAZEL PORTRO



RANDOM PHASES

MAZONITE BLUE



360°
View



RANDOM PHASES

MINCHIN BLACK



360°
View



RANDOM PHASES

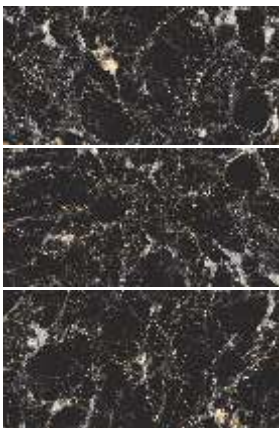
OZIAL BLACK DECOR



360°
View

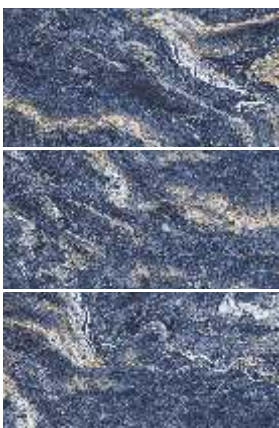


OZIAL BLACK



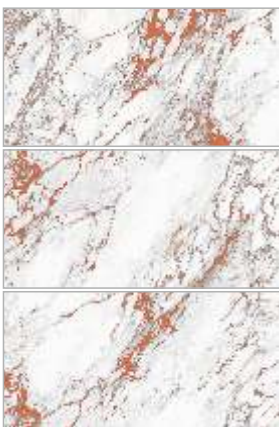
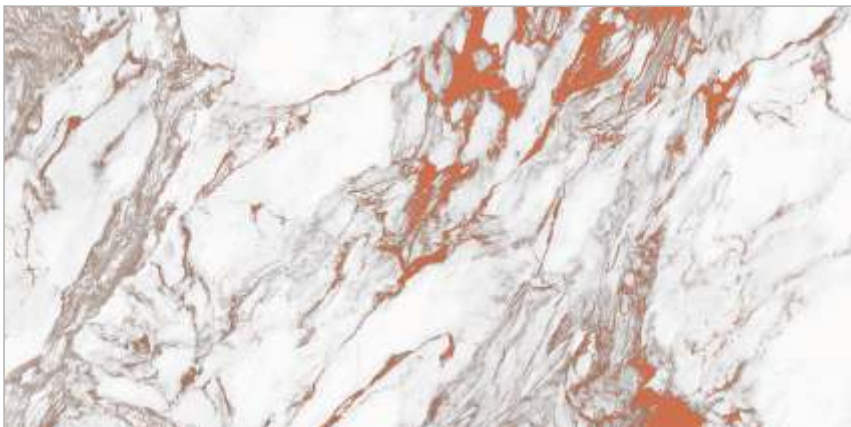
RANDOM PHASES

THOM BLUE

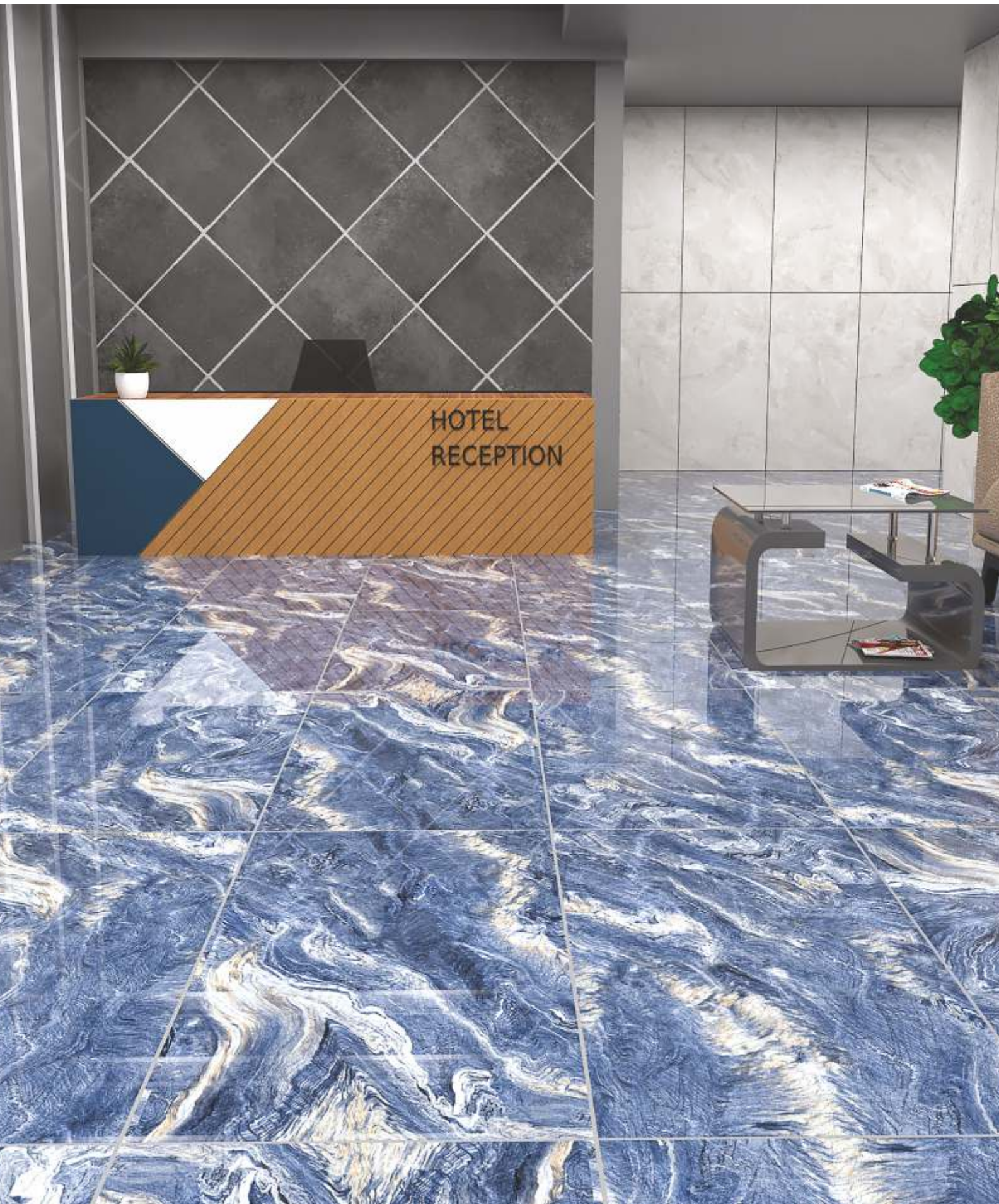


RANDOM PHASES

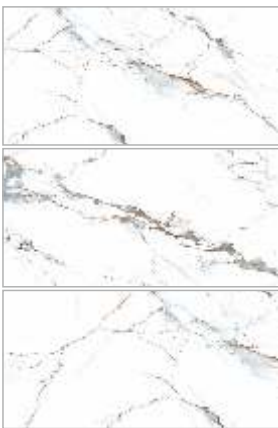
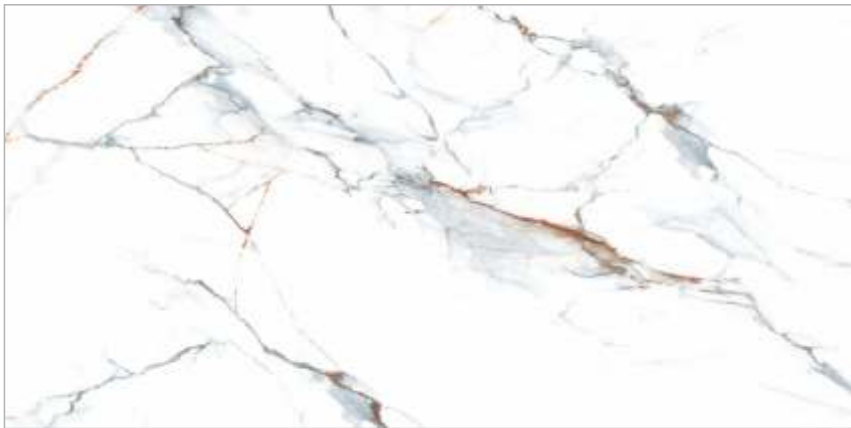
VICTOR RED



RANDOM PHASES



CELIK STATUARIO



RANDOM PHASES

FORKIN DECOR



RALTEN AQUA





ARIS STATUARIO

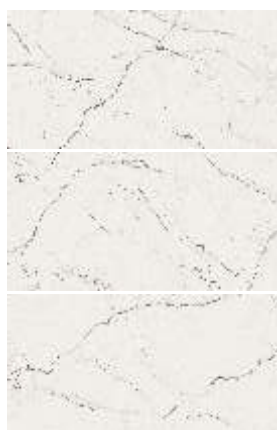


360°
View



RANDOM PHASES

BACKNEZ BIANCO

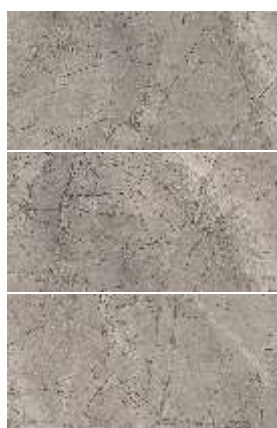


360°
View



RANDOM PHASES

BENTYL GREY



360°
View



RANDOM PHASES



BERGO CREMA



RANDOM PHASES

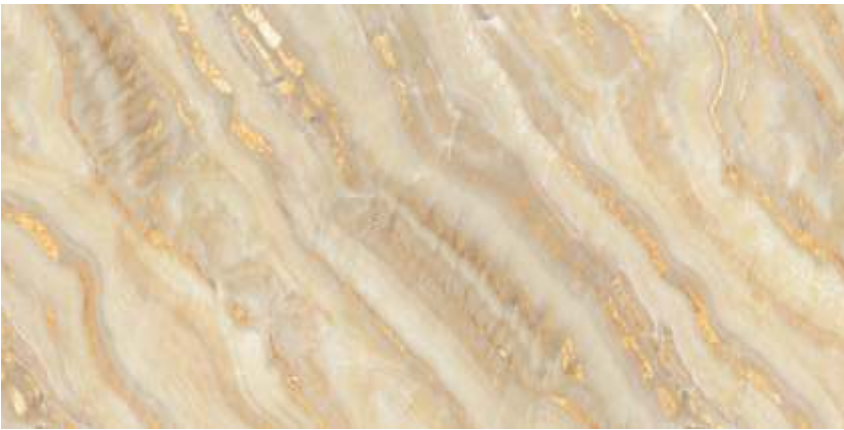
BERNETT BLUE DECOR



BERNETT BLUE



CARNELL GOLD



360°
View



RANDOM PHASES

DABINETT GREY

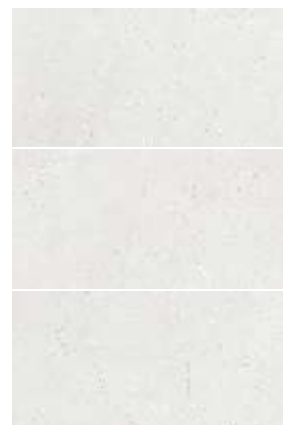


360°
View



RANDOM PHASES

DABINETT SILVER

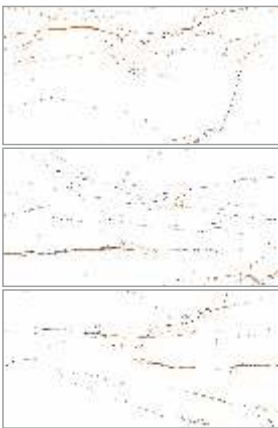


360°
View



RANDOM PHASES

DEMU STATUARIO



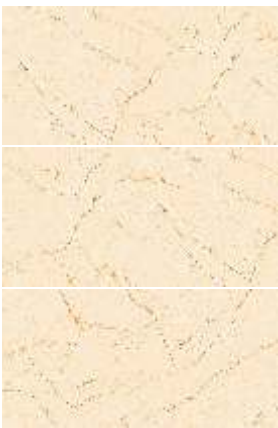
RANDOM PHASES

ELSA SILVER



RANDOM PHASES

FIANNA BEIGE



RANDOM PHASES

FRYETT BEIGE



360°
View



RANDOM PHASES

FRYETT GREY



360°
View



RANDOM PHASES

FRYETT NERO

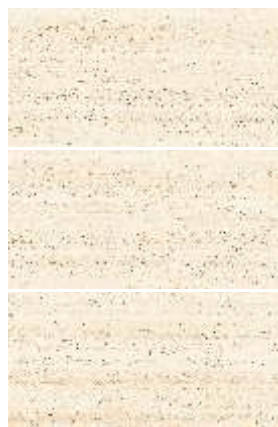


360°
View



RANDOM PHASES

GARNER CREMA



360°
View



RANDOM PHASES

GARNER SILVER



360°
View



RANDOM PHASES

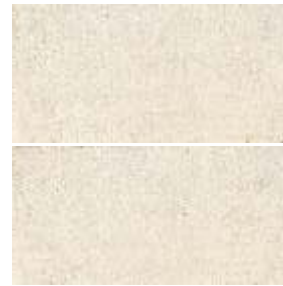
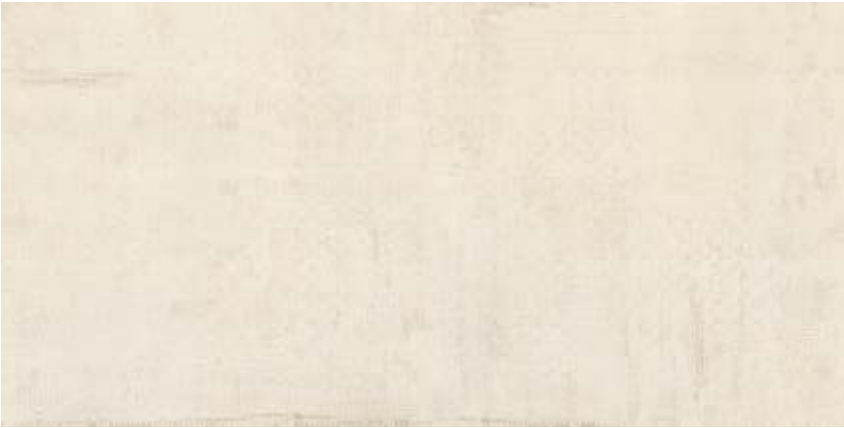
HADDRELL BEIGE DECOR



360°
View



HADDRELL BEIGE



360°
View



RANDOM PHASES

HAINES VERDE



360°
View



RANDOM PHASES

LEMIN BEIGE



360°
View



RANDOM PHASES

LEMIN NERO



360°
View



RANDOM PHASES

SHIRE WHITE

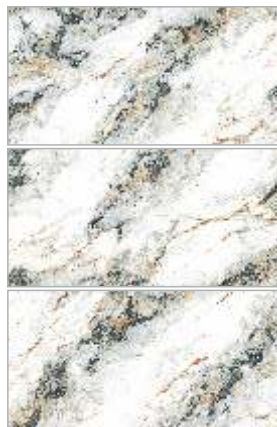


360°
View





ALMY STATUARIO



360°
View



RANDOM PHASES

ANDREE YELLOW

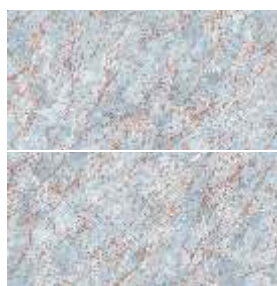


360°
View



RANDOM PHASES

BACCUS BERRY



360°
View



RANDOM PHASES



BAZELA BLISS



360°
View



RANDOM PHASES

BEIGE LEAF



360°
View



GREEN LEAF



360°
View



BAZELA GREEN

NEW



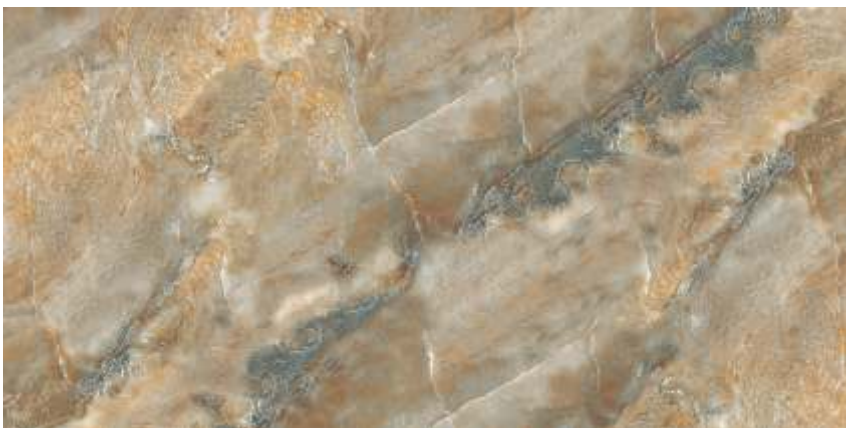
360°
View



RANDOM PHASES

EXONA BROWN

NEW



360°
View



RANDOM PHASES

FIRMIN BLISS ANANT

NEW



360°
View



RANDOM PHASES

FIRMIN GREY ANANT



RANDOM PHASES

HARTIGAN OCEAN



RANDOM PHASES

TECTRIX GREEN



RANDOM PHASES



AKESTER BEIGE



RANDOM PHASES

AKESTER BROWN



RANDOM PHASES

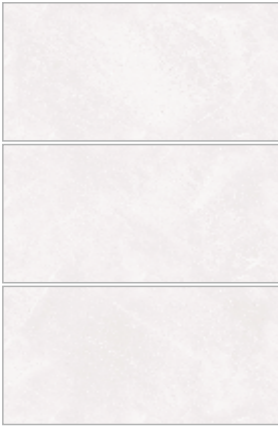
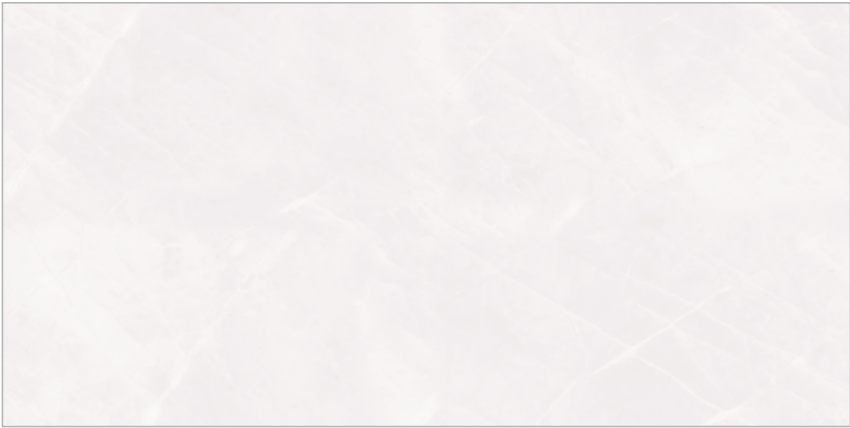
AKESTER GREY



RANDOM PHASES



AKESTER SILVER



RANDOM PHASES

ALEXNDRITE GREY



AMMOLITE ONYX



RANDOM PHASES

AMORITE GOLD



360°
View



RANDOM PHASES

ANANT ONYX



360°
View



RANDOM PHASES

ANANT CRESTAL



360°
View



RANDOM PHASES

ANANT SATVARIO



RANDOM PHASES

ANANT TURKISH



RANDOM PHASES

ANDOR ICE



RANDOM PHASES

AZURITE BUFF



360°
View



RANDOM PHASES

BLACK SATVARIO

NEW



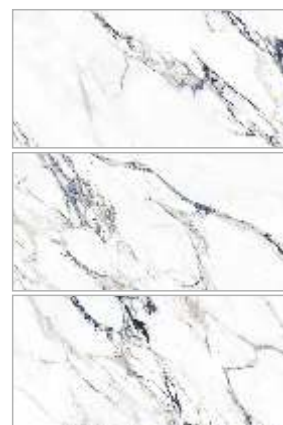
360°
View



RANDOM PHASES

BLUE SATVARIO

NEW



360°
View



RANDOM PHASES

BORRIS WHITE



BOSSET PEARL



RANDOM PHASES

CARRARA SNOW



RANDOM PHASES

CARYL SILVER

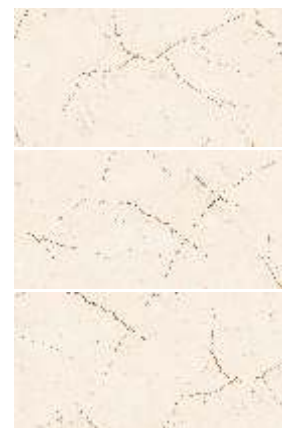


360°
View



RANDOM PHASES

CHURCHIL CREMA



360°
View



RANDOM PHASES

CIMMERIAN BEIGE



360°
View



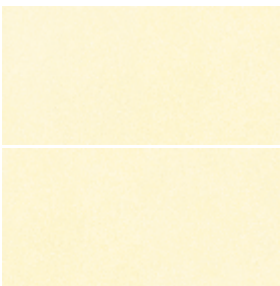
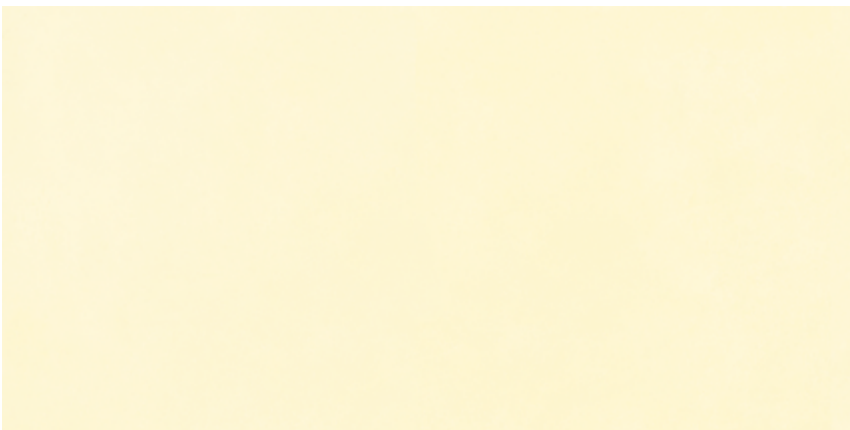
RANDOM PHASES

CIMMERIAN GRIS



RANDOM PHASES

CIMMERIAN IVORY



RANDOM PHASES

CIMMERIAN NERO



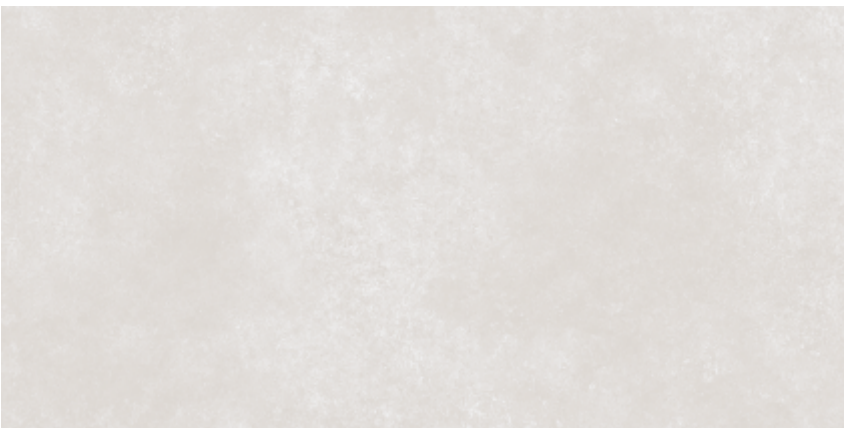
RANDOM PHASES

CIMMERIAN VERDE



RANDOM PHASES

CIMMERIAN WHITE



RANDOM PHASES

CUESTA GREY



RANDOM PHASES

CUESTA MOCHA



360°
View



RANDOM PHASES

CULCATTÀ JOY



360°
View



RANDOM PHASES

DELEXA NATURA



360°
View



RANDOM PHASES

DIAZO PEARL

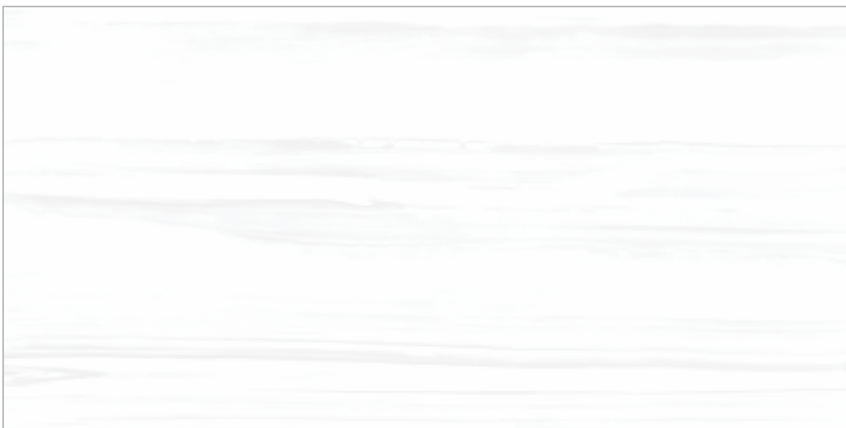


360°
View



RANDOM PHASES

DOLIN WHITE



360°
View



RANDOM PHASES

EFFENY WHITE



360°
View



RANDOM PHASES

FEAZE BLUE

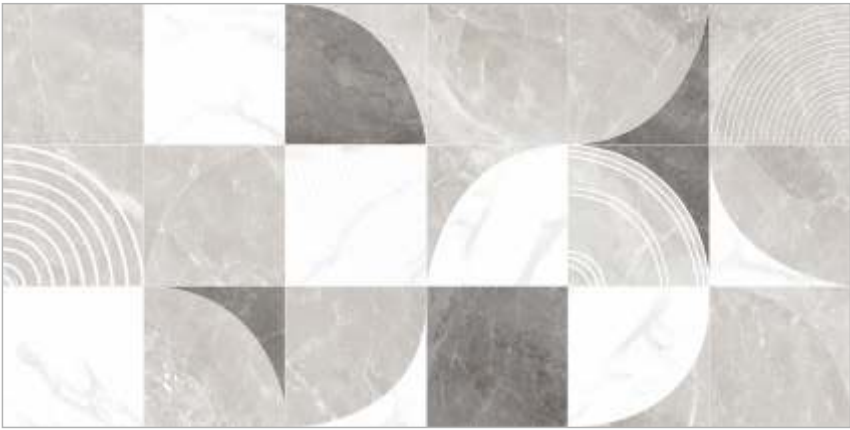


RANDOM PHASES

EUBURA SILVER



EUBURA GREY DECOR



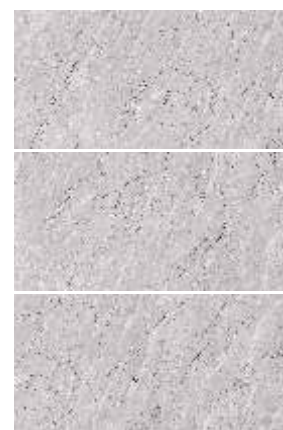
EUBURA GREY



360°
View



FLOURITE DOVE

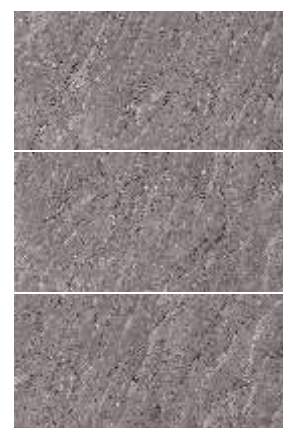


360°
View



RANDOM PHASES

FLOURITE UMBER



360°
View



RANDOM PHASES

FLOYD BLUE



RANDOM PHASES

FRAIS BIANCO



FRAIS GREY DECOR



FRAIS GREY



FRANCES BROWN



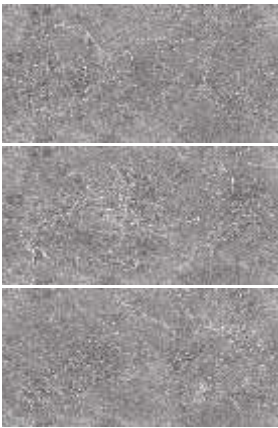
RANDOM PHASES

FRANCES CREMA



RANDOM PHASES

FRANCES GREY



RANDOM PHASES

GAFFEY BEIGE



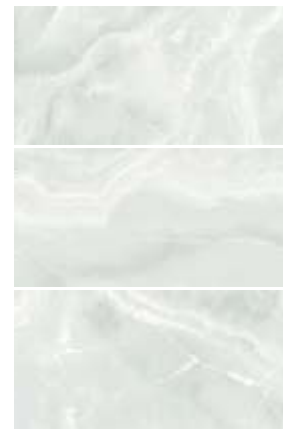
RANDOM PHASES

GEMSON ANANT



RANDOM PHASES

GREENLY ONYX



360°
View



RANDOM PHASES

HALTON GREY

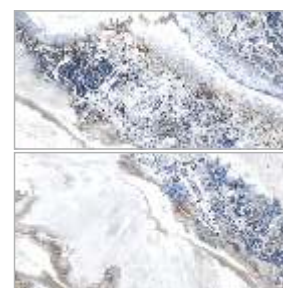
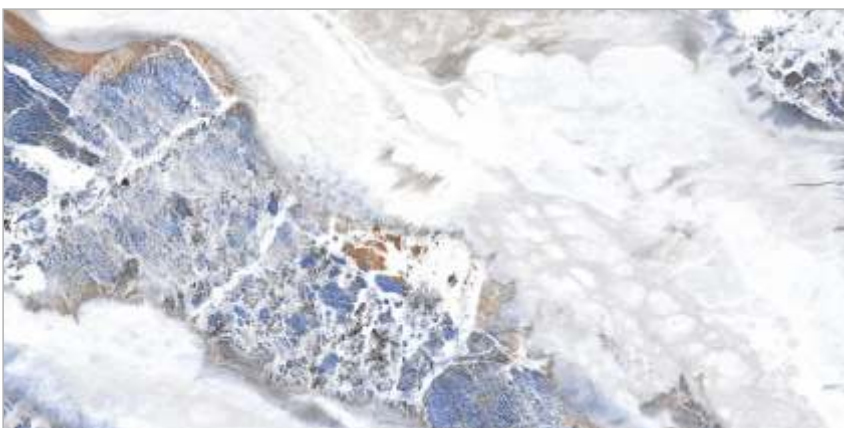


360°
View



RANDOM PHASES

HARKES BLISS



360°
View



RANDOM PHASES

HENRICH BIANCO



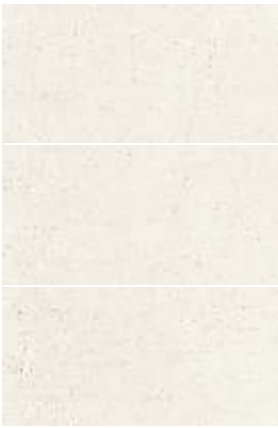
RANDOM PHASES

JACOX WHITE



RANDOM PHASES

KAINES SILVER



RANDOM PHASES

KERTON BLUE

NEW



360°
View



RANDOM PHASES

KILTON GREY

NEW



360°
View



RANDOM PHASES

KERRELL BLUE

NEW



360°
View



RANDOM PHASES

KUNZ LIME



RANDOM PHASES

KYNITE WHITE



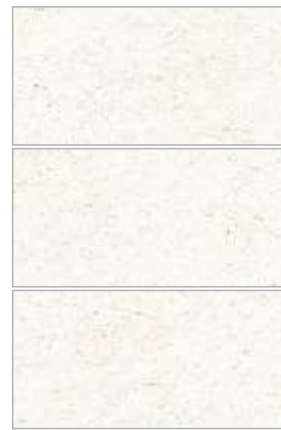
RANDOM PHASES

LAFFINE WHITE



RANDOM PHASES

LATTIN CREAM



360°
View



RANDOM PHASES

LAX ANANT

NEW



360°
View



RANDOM PHASES

MADREN GREY

NEW



360°
View



RANDOM PHASES

MALZER GREY



RANDOM PHASES

MALZER SILVER



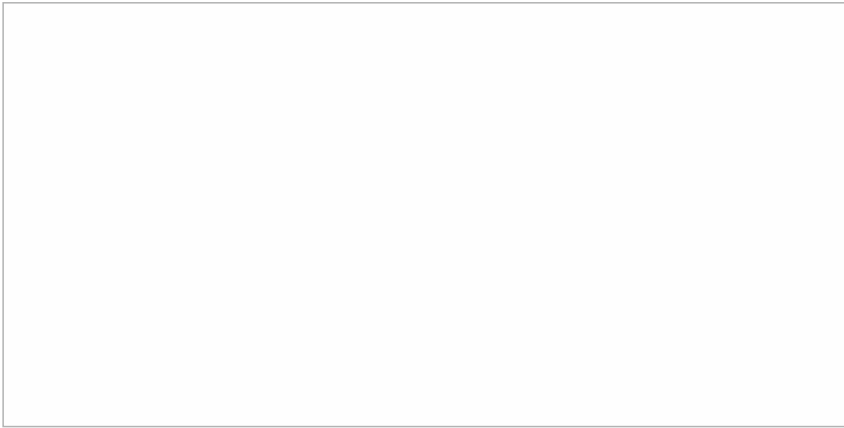
RANDOM PHASES

MEVIN ANANT



RANDOM PHASES

MYRON WHITE



360°
View



NAPEAN SILVER

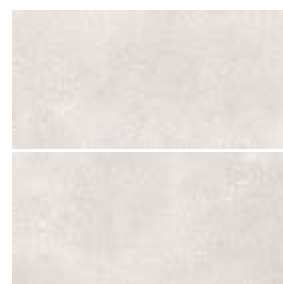


360°
View



RANDOM PHASES

NAPTON BIANCO



360°
View



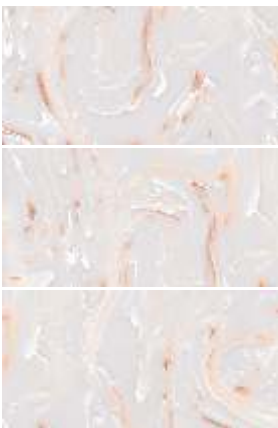
RANDOM PHASES

NICKEL WHITE



RANDOM PHASES

NOMURA RED



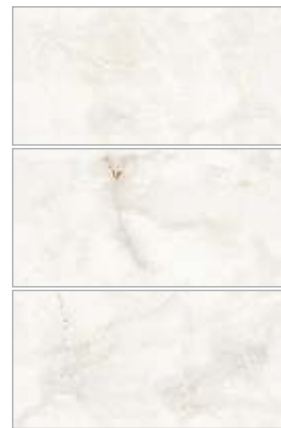
RANDOM PHASES

NOMURA YELLOW



RANDOM PHASES

PANTIRA ANANT



360°
View



RANDOM PHASES

POMPEI BEIGE



360°
View



RANDOM PHASES

QUILL STATUARIO



360°
View



RANDOM PHASES

RANDERS MINT



RANDOM PHASES

REZIN GREY



RANDOM PHASES

ROSALIA BIANCO



RANDOM PHASES

ROYAL STATUARIO



360°
View



RANDOM PHASES

SABENN BEIGE

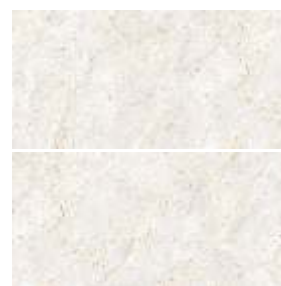


360°
View



RANDOM PHASES

SELBIE BEIGE



360°
View



RANDOM PHASES

SENETT BEIGE



RANDOM PHASES

SENETT CHOCO



RANDOM PHASES

TIZARD BLUE



RANDOM PHASES

TORRENS SILVER



RANDOM PHASES

TRUETT CREMA



RANDOM PHASES

UFFEN NERO



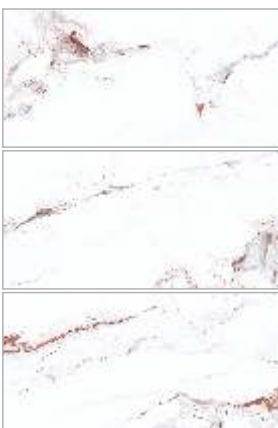
RANDOM PHASES

UFFEN SILVER



RANDOM PHASES

VERNON PEARL



RANDOM PHASES



BRUSTER AQUA



RANDOM PHASES

BRUSTER PURPLE



RANDOM PHASES

CLUNAS RED



RANDOM PHASES



DALLEX WHITE



RANDOM PHASES

EBRIX TEAL



RANDOM PHASES



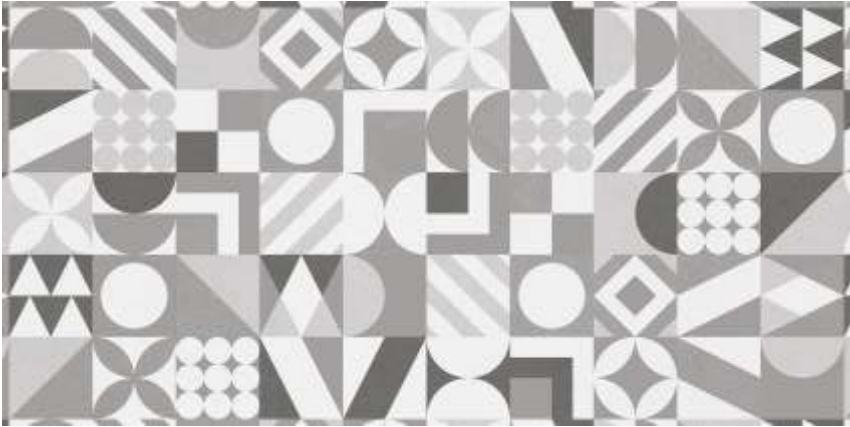
AINSON BEIGE



RANDOM PHASES



AINSON GREY DECOR



RANDOM PHASES



AINSON SILVER

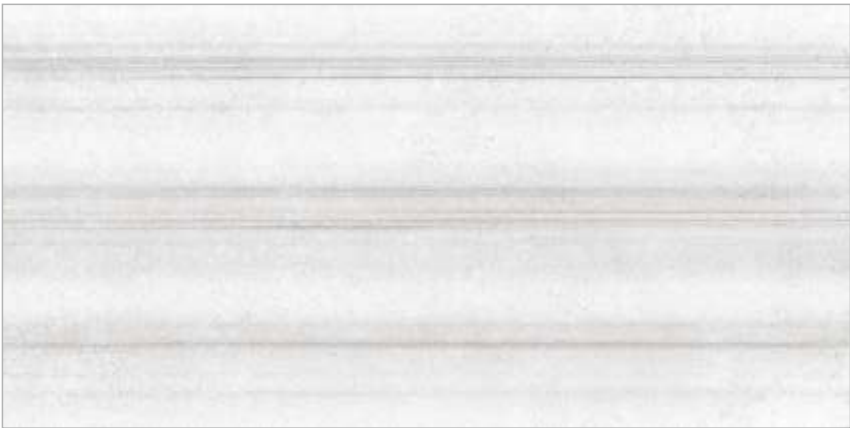


RANDOM PHASES





AITKEN GREY



RANDOM PHASES

ALAIN BEIGE



BROOKS TAN



CARYL SILVER



360°
View



RANDOM PHASES

CHERITON BEIGE



360°
View



RANDOM PHASES

CHERITON GREY

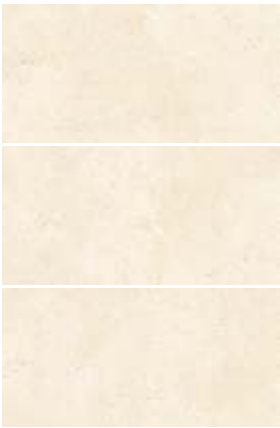


360°
View



RANDOM PHASES

CHICAGO BEIGE



RANDOM PHASES

CIMMERIAN BEIGE



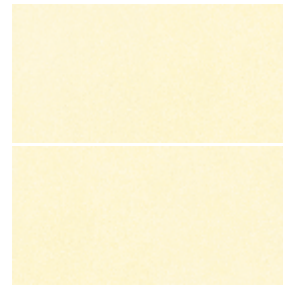
RANDOM PHASES

CIMMERIAN GRIS



RANDOM PHASES

CIMMERIAN IVORY



RANDOM PHASES

CIMMERIAN NERO



RANDOM PHASES

CIMMERIAN VERDE



RANDOM PHASES

CIMMERIAN WHITE



RANDOM PHASES

DEODAR CEDAR



RANDOM PHASES

DUCE BRONZE



RANDOM PHASES

EDISS WOOD



RANDOM PHASES

PINEWOOD CAMEL



RANDOM PHASES

REXWOOD BRONZ



RANDOM PHASES

SHELL GREY



RANDOM PHASES



AHRENS BIANCO



RANDOM PHASES

BROOMER MOCHA



RANDOM PHASES

BROOMER GREEN



RANDOM PHASES



BEAVINO GREY



RANDOM PHASES

BEAVINO NERO



RANDOM PHASES

COSTELLO GREY



RANDOM PHASES



DORINO BEIGE



RANDOM PHASES



ANGLEY DECOR

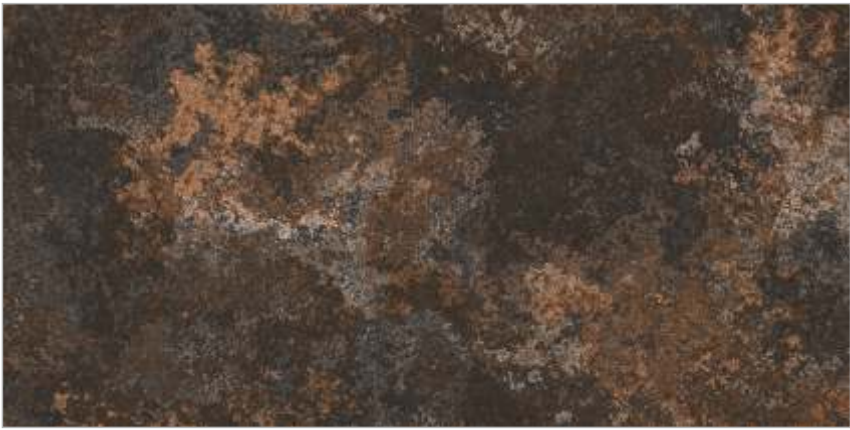


BRAZENN BRONZ



RANDOM PHASES

BRAZENN CHOCO



RANDOM PHASES



ENZORA IVORY



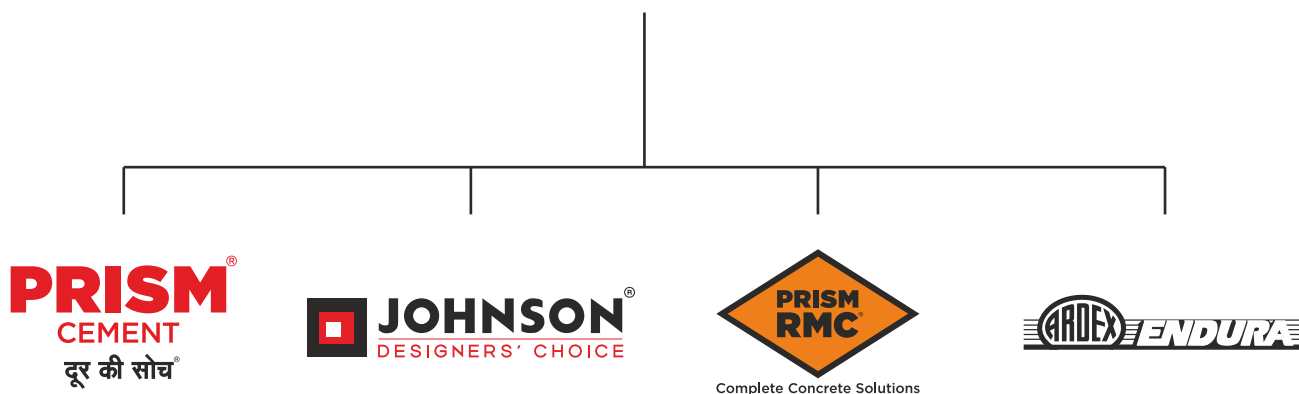
RANDOM PHASES



A journey from tiles to lifestyles - measured in square feet

H&R Johnson (India) is a division of Prism Johnson Limited, one of India's foremost Integrated Building Materials conglomerates.

PRISM JOHNSON LIMITED



Established in 1958, Johnson is one of the oldest and trusted brands in the country. Built on the strong and unswerving foundations of quality and innovation, this trust has only grown in these decades gone by; and continues to grow. Starting with tiles, the brand soon diversified into offering lifestyle solutions in the realms of Engineered Marble & Quartz and Bath Solutions. There by becoming India's most Integrated Lifestyle Solutions brand. Every product that comes bearing the H&R Johnson insignia is a symbol of the same quality and innovation focused on adding value to the lives of our consumers.

Pioneering Innovations, A Way of Life

At H&R Johnson the term innovation is at the heart of everything we do. That's why it is backed by credible research. Every product attempts to fill in a void left by conventional offerings in the category, in an innovative manner. It's this value we place on cutting-edge innovation that makes us strive for more and eventually deliver more. A quality and a way of working that has redefine consumer lifestyles and expectations.

- Anti-skid & Water-repellent Tiles for Bathrooms
- Rectified Wall Tiles
- Johnson Marbonite - Vitrified Wall and Floor Tiles
- Joint Free Tiles
- Large Format Slabs
- Digitally Printed Wall & Floor Tiles
- Germ Free Tiles & Sanitaryware
- Exterior & Industrial Flooring Solutions

India's Most Integrated Tile Manufacturing Company



Self-owned Felspar Mines



Making Punches & Dies



Manufacturing of Soluble Salts and Inks

Being India's most trusted tiling brand requires that trust to be maintained in every stage of developing each and every product that bears the name of the brand. That's why at H&R Johnson, our Felspar Mines are Self-owned, the soluble salts and inks are manufactured in-house, and even the dies and punches are made in-house. All, so that every step in the process comes with the same quality and assurance, that you expect from us.



Manufacturing Excellence

Johnson has the most modern manufacturing units across strategic locations in India. Our manufacturing facilities employ the best technology from world leaders in tile manufacturing equipment. All our plants are ISO compliant with both 9001 and 14001 certifications as well as OHSAS 18001 certification.



Certifications



Johnson is India's largest tile manufacturer. It's commitment to quality, service and innovation is backed by certification from the world's leading accreditation bodies.

ISO 9001: 2015

For implementing a Quality Management System for the Manufacture and Supply of Ceramic Tiles.

ISO 45001: 2018

For implementing an Occupational Health & Safety Management System for the Manufacturing of Ceramic Tiles.

ISO 14001: 2015

For implementing an Environmental Management system for the Manufacturing of Ceramic Tiles

Certificate of Merit for Energy Conservation, Bureau of Energy Efficiency, Ministry of Power A Recognition for the efficient use of energy and its conservation.

Plant has received Safety award by National Safety Council

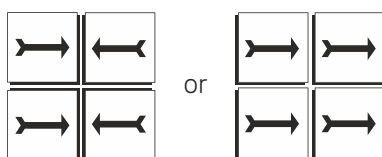
GreenPro is a product certification given by the Confederation of Indian Industry (CII) which signifies environmentally conscious life cycle of the production; certification for eco-friendly products that helps customers make an informed choice towards sustainable products.

Griha

Griha council is a joint initiative of Ministry of New and Renewable Energy, GOI and The Energy and Resources Institute to implement Griha. India's national rating system for sustainable habitats

Johnson Tile Fixing Instructions

1. Plaster the surface of the floor where the tiles will be laid with smooth finish and complete the plastering and curing at least two weeks prior to laying.
2. Before fixing Johnson tiles lay them out in the desired pattern and make sure that they give an acceptable blend of shade, colour and design. Please note that certain amount of shade and size variation is inherent in the manufacture of vitrified ceramic tiles. Certain products will have Intentional shade or colour variation to get the natural and elegant look, which is an integral element of the design r e s e m b l i n g naturally created veins or shaded effect.
3. The company bears no responsibility towards the tiles exposed to any outside process like transfers, printing, firing etc.
4. For fixing tile, we recommend using an appropriate product from the range of tile fixing adhesives from the ARDEX ENDURA (INDIA) PVT. LTD. Please follow the adhesive manufacturer's recommendations and instructions for best results.
5. For fixing Johnson tiles on the floor, using sand and cement, follow the instructions given below:
 - a) Use cement and sand mortar in the ratio of 1:4. Add some water to create a consistent paste.
 - b) Once the mixing has been completed do not add any further water and use the same within one hour.
 - c) Apply a 20-30 mm layer of bedding material over an area of 1 square meter at a time on the surface of the area. Apply a fine slurry to the back of the tile to ensure proper and full bedding. Press gently for even adherence at the back of the tile. **DO NOT USE AN IRON HAMMER OR SOME HEAVY MATERIAL TO PRESS THE TILE.**
6. For fixing Johnson tiles on Wall / Dado, we recommend using an appropriate product from the range of tile fixing adhesives from the ARDEX ENDURA (INDIA) PVT. LTD. with proper troweling method for 100 per cent coverage behind the tiles and for peerless bonding. Please follow the adhesive manufacturer's recommendations and instructions for best results. We do not recommend the use of sand and cement for fixing on Dado.
7. Mark and lay out the tiles from the center of the area to be laid so that cut tiles, if any, will be on the outer edges towards the walls.
8. The work size which we try to maintain for better technical performance is 60 cm x 60 cm on average. For large format tiles we do not recommend tiles to be laid without a gap. Plastic tile spacers can be used at each tile corner to maintain even grout lines between the tiles. It is advisable to maintain a gap of 2 mm to 6 mm between every tile to allow for possible expansion as per ISO tolerance norms.
9. Complete the laying process by pressing the cut Johnson tiles firmly into place along the walls/floors.
10. Allow 3-4 days for bed curing. After this period fill the joints with cementitious or epoxy grouts from ARDEX ENDURA (INDIA) PVT. LTD. Use of grout sealant is recommended for keeping the grout free of dust.
11. Fifteen minutes after finishing the grouting process, wipe off excess grout with a damp sponge and polish the



NOTHING IN THESE INSTRUCTION IS A SUBSTITUTE FOR GOOD WORKMANSHIP AND SUPERVISION

TECHNICAL SPECIFICATIONS

S. No	Property	ISO 13006:2018 / EN 14411 Group Bla Requirement	Indian Standard IS 15622:2017 Group Bla Requirement	Johnson Tiles Value	Test Method
Dimensions & Surface Quality		whichever is less applicable. Rectified edge			
1	Deviation in Length & Width	± 0.3% or ±1.0mm	± 0.1 %	± 0.1%	ISO 10545-2 / IS 13630-1
2	Deviation in Thickness	± 5% or ±0.5mm	± 5 %	± 4%	ISO 10545-2 / IS 13630-1
3	Straightness of Sides	± 0.3% or ±0.8mm	± 0.1 %	± 0.1%	ISO 10545-2 / IS 13630-1
4	Rectangularity	± 0.3% or ± 1.5mm	± 0.1 %	± 0.1%	ISO 10545-2 / IS 13630-1
5	Surface Flatness	± 0.4% or ±1.8mm	± 0.5 %	± 0.2%	ISO 10545-2 / IS 13630-1
6	Surface Quality	Min 95% free from visible defects	Min 95% free from visible defects	>95% free from visible defects	ISO 10545-2 / IS 13630-1
Physical Property					
7	Water Absorption	≤ 0.5% individual Max 0.6%.	Average ≤0.08%, Individual 0.1%, Max	≤ 0.05%	ISO 10545-3/ IS 13630- 2
8	Modulus of Rupture	≥ 35 N/mm ² Individual 32N/mm ² , Min	Average 35 N/mm ² Individual 32N/mm ² , Min	≥ 38 N/mm ²	ISO 10545-4/ IS 13630-6
9	Breaking Strength	700 N Min for thickness < 7.5 mm, 1300 Min for thickness ≥ 7.5 mm	700 N Min for thickness <7.5 mm, 1300 Min for thickness ≥7.5 mm	≥ 1500 N	ISO 10545-4 / IS 13630-6
10	Moisture expansion	Report value	0.02 mm/m, Max	≤ 0.02 mm/m	ISO 10545-10 / IS 13630-3
11	Scratch hardness of surface (Moh's scale)	-	5, Min	≥ 5	IS 13630 -13
12	Resistance to Surface Abrasion of Glazed Tiles for Floor Application	report abrasion class & Cycle passed	Class II , Min	PEI II- III	ISO 10545-7 /IS 13630 -11
13	Coefficient of Linear Thermal Expansion	Report value	Max, 6 x 10 ⁻⁶ K ⁻¹	≤ 6 x 10 ⁻⁶ K ⁻¹	ISO 10545-8/ IS 13630-4
14	Thermal Shock Resistance	Report result	10 cycles Min	No damage	ISO 10545-9 / IS 13630 -5
15	Crazing Resistance of Glazed Tiles	Report result	4 cycles @7.5 bar Min	No Damage	ISO 10545-11/ IS 13630-9
16	Impact Resistance	Report value	0.55, Min	≥ 0.55	ISO 10545-5 / IS 13630-14
17	Coefficient of Friction	-	Manufacturer to declare	≥ 0.3	ANSI A 326.3
18	Frost Resistance	Report result	Required if requested by purchaser	No Damage	ISO 10545-12 / IS 13630-10
19	Bulk Density (g/cc)	-	2.2, Min	≥ 2.2	ASTM C373-16 / IS 13630-2
20	Color Resistance to UV light	Report result	-	No change in color	DIN 51094
21	Chemical Property (cleansers except to cleansing agents containing Hydrofloric acids and its compounds)				
a	Resistance to Staining - Glazed Tiles	Min Class 3	Class I, Min	Class 3 (ISO) / Class 1(BIS)	ISO 10545-14 / IS 13630-8
b	Resistance to Household Chemicals and Swimming Pool water cleansers - Glazed tiles	GB	Class AA Min	Class AA/GA	ISO 10545-13 / IS 13630-8
c	Resistance to acids and alkalis (Glazed Tiles)	Report resistance class	Report resistance class	GA	ISO 10545-13 / IS 13630 -8
22	Lead & Cadmium Release- for Glazed Tiles, where required	Report value	-	Nil	ISO 10545-15

* ISO / IS technical specifications for Johnson tiles are applicable only for premium /1st Quality tile
Please inspect all tiles prior to installation, company will not entertain any complaints once tiles are laid / fixed

PACKAGING DETAILS

Product	Nominal Size (cm)	No of Tiles/Box	Approx Area/Box (sq m)	Approx Weight/Box (kgs)	Approx Cartons/ 20' Container	Approx Area per Container (sq m)
Johnson 60x120 Wall Tiles	60x120	2	1.44	27	1000	1440

YOU CAN ALSO REACH US AT

Region	Branch	Tel.:
East	Kolkata	033-46021880
	Bhubaneshwar	0674 6539836/37/2430240
	Siliguri	9836065812
	Guwahati	8135846661/7575900492
	Ranchi	9576038118
West	Mumbai	022-40647500
	Thane	022-25867600 / 666
	Pune	020-41301164 / 31
	Aurangabad	8669600748
	Ahmedabad	079-48480010
	Raipur	0771-4919129
	Indore	0731-4007441
North	Jalandhar	0182-4505038 / 39
	Chandigarh	0172-4697100
	Delhi	011-49526600

Region	Branch	Tel.:
North	Jaipur	0141-2368329
	Lucknow	0522-2721699
	Varanasi	0542-2222620
	Patna	9576038781
South	Bengalure	080-22234310/080-22234330
	Hyderabad	040-29802270 / 71 / 72
	Vijayawada	9666429666
	Vishakhapatnam	0891-2796376
	Tirupati	9121228960
	Kochi	0484-4871277
	Kozhikode	0422-4382698
	Thiruvananthapuram	0471-2720141
	Chennai	044-28544116 / 28541881
	Coimbatore	0422-4382698
	Madurai	0452-4355584 / 4355594
	Trichy	9486718544

EXPERIENCE CENTERS

Location	Address	Tel.:
Kolkatta	HOUSE OF JOHNSON - 83 JBS Haldane Avenue, TOPSIA Trinity towers Kolkata - 700046	033-46021880
Guwahati	HOUSE OF JOHNSON - 1st Floor, Above Royal Riders Honda, Near Rahul Kata, Pub Bragaon, Garchuk, Guwahati - 781035	7575900492
Bhubaneshwar	HOUSE OF JOHNSON - Ray Tower, 1st Floor, N4/237, Indradhanu market, IRC Village, Nayapalli, Bhubaneshwar, Orissa - 751015	0674 6539836/37/2430240
Patna	HOUSE OF JOHNSON - SK Builders and colonizer Pvt.Ltd.,1st Floor, SK Palace, Saguna more, Bihar - 801503.	9702651243
Chandigarh	HOUSE OF JOHNSON - SCO 214, sector14, Panchkula, Haryana - 134109	0172-4637724
Delhi	HOUSE OF JOHNSON - First & Mezzanine Floor, B-1/G-3, Mohan Industrial Estate, Mathura Road, New Delhi - 110094.	11-49526600
Lucknow	HOUSE OF JOHNSON - 1st Floor, Prithvi Ratan Height,Plot No CP-4, Vijayant khand - 3, Gomtinagar Yojna, Lucknow - 226028	0522-2721699
Varanasi	HOUSE OF JOHNSON - Ashakunj, 1st floor, D59/103 D4, Opp Siddharth Complex, Sigra Mehmoorganj Road, Varanasi - 221010	0542-2222620
Aurangabad	House Of Johnson Aurangabad - Gut No 16/44, NH-211, Near Balapur Phata, Near Ramkisan Lawns, Beed Bypass Road Aurangabad 431005	8669600748
Pune	HOUSE OF JOHNSON - Sable House, Poona Snuff Factory, Sr. No 11A, Plot 408/4/5, Satara Road, Gultekadi, Pune - 411037	7350009364
Thane	HOUSE OF JOHNSON - Shop No.5, Gr.Floor, Cosmos Jewels, Near Dmart, Anand Nagar, Ghodbunder Road, Thane West - 400615	8424003247
Mumbai - Andheri	HOUSE OF JOHNSON - 1st flr, Bonanza, Sahar Plaza, Nr Hotel Kohinoor continental, J B Nagar, Andheri Kurla Road, Andheri East, Mumbai - 400059	8108030975
Ahmedabad	HOUSE OF JOHNSON - F 106-107, Shivalik Plaza, IIM Road, Panjrapole Cross Road, Ahmedabad, Gujarat - 380015	079-48480010
Indore	HOUSE OF JOHNSON - Shop No 5, 6, 7 and 8, Upper Ground Floor, Exotica, Shalimar Township, Village Niranjanpur, A. B. Road, Indore, Madhya Pradesh - 452001	0731-4007441
Raipur	HOUSE OF JOHNSON - 2nd Floor, MM Silver Plaza, Opp Udyog Bhawan, Ring Road - 1, Raipur, Chattisgarh - 492001	771-4919129
Coimbatore	HOUSE OF JOHNSON - Elysium Towers, Park Gate Rd, No. 21, ATT Colony, Gopalapuram, Coimbatore - 641018	0422-4382698
Chennai	HOUSE OF JOHNSON - 82, 84 & 86 Bascon Maeru, 1st floor, Kodambakkam High Road, Nungambakkam, Chennai - 600034	044-48611632
Kochi	HOUSE OF JOHNSON - Door no. 11/300 f, Next to VTJ Hyundai, NH 47 Kundanoor, Maradu, Kochi, Ernakulam - 682304	0484-4871277
Kozhikode	HOUSE OF JOHNSON - Tilal Tower, Near Nexa Showroom, Kudilthod, Malaparamba bypass, Kozikode, Kerala - 673017	0495-2357505
Thiruvananthapuram	HOUSE OF JOHNSON -1st Floor, Sreedhanya Apex, TC 22/3720 (4) Vellayambalam, Sasthamangalam PO, Thiruvananthapuram, Kerala - 695010	0471-2720141
Bengalure	HOUSE OF JOHNSON - No.39, Rajaram Mohan Roy Road , Opp. Kanteerava indoor Stadium, Bengalure - 560027	080-22234310/080-22234330
Bengalure	HOUSE OF JOHNSON - Dodda Banaswadi, Opp. New Baldwin Residential School, Bengalure-560043	080-41692976 / 41692060
Hyderabad	HOUSE OF JOHNSON - SP Jubilee Crown (3rd Floor) Plot - 1270, Road No.36, Jubilee Hills, Hyderabad - 500033	8897525143

For address and contact numbers of our Johnson Exclusive Showrooms and Authorized Retailers, please visit our website www.hrjindia.com



Toll Free No.: 1800-210-7484

WhatsApp No.: +91 84510 57484

Email: tiles.customercare@prismjohnson.in

For Export Enquires, Email:

exports.customercare@prismjohnson.in

PRISM JOHNSON LIMITED

H & R JOHNSON (INDIA) DIVISION

Corporate Office:

7th Floor, Windsor, C. S. T. Road, Kalina,
Santacruz (East), Mumbai - 400 098, India.

Tel: +91-22-40647300

Website: www.hrjohnsonindia.com

Registered Office: 305, Laxmi Niwas Apartments, Ameerpet
Hyderabad - 500016, Telangana, India.

Download App



Download E-Catalogue



HRJIndia



@hrjohnsonofficial



Hrjohnsonindia



hrjohnson_india



h-&-r-johnson-india-prism-johnson-limited



HRJohnsonIndia1