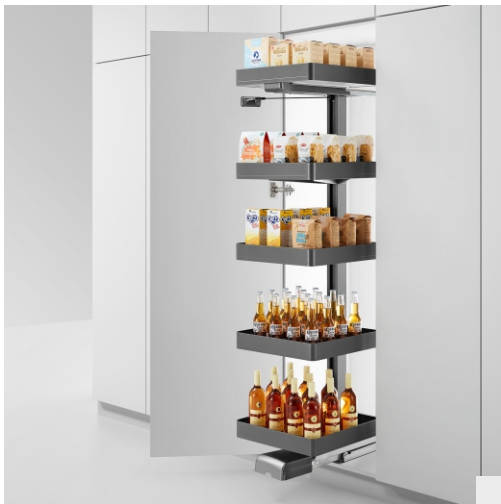
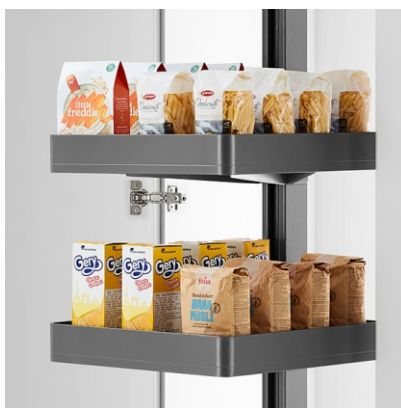




I N S P I R I N G - E X P R E S S I V E - F U N C T I O N A L



# HIGH END KITCHEN STORAGE



## High-class Grey

Extremely low-key,  
but everywhere revealed  
the benefits of the high-level sense.

## PURPLE CRYSTAL SERIES & ENCANTO SERIES

### Function

German Technology, super load-bearing Damping, fully pull-out guide rail, simple and brand new linkage structure, pull out the inner baskets while opening the door. Load-bearing point of cabinet door focus on bottom of cabinet, protect the door from deformation.

### Design

Slim sides design, interpreting minimalism and light luxury style, enhance the taste of kitchen storage. The bottom is covered by non-slip mat, prevent the items from collision, and convenient to clean at the same time.

### Quality

Sides of basket is made of superior aviation aluminium alloy, advanced fluorocarbon coating surface treatment technology, strong, rust resistance, abrasive resistance. The linkage structure is made of premium steel, European standard environmental surface treatment technology, running smooth and stable.

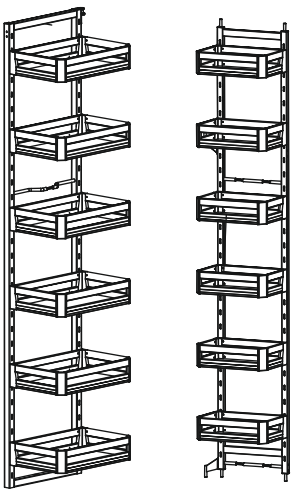
### Storage

It is recommended to store frequently-used kitchen utensils, shakes, dried fruit or condiments, It is suitable to be used with embedded refrigerator in high cabinet combination, not only can convenient to fetch items, but also can reduce the abrupt feeling of single use.





HIGH END KITCHEN STORAGE  
PURPLE CRYSTAL



Basket is made of alloy  
(chromed purple)  
and tempered glass

**Loading Capacity**

Max Loading for each bigger  
Basket 5kg, Max Loading  
for each smaller Basket 3kg.

Slim side design, interpreting minimalism  
and light luxury style, enhance the taste  
of kitchen storage. The bottom is covered  
by non-slip mat, prevent the items from  
collision, and convenient to clean at the  
same time.

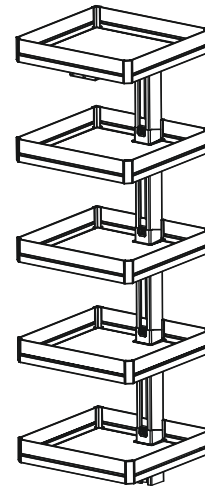


PANTRY ROLL OUT

PRODUCT CODE	SPECIFICATION (W x D x H)	CARCASE SIZE	DESCRIPTION	FINISH	TYPE
PCPRO - 70712	405 x 500 x 1780mm	450mm	6 Basket	Upgrade Grey Glass	Soft Close
PCPRO - 70713	555 x 500 x 1780mm	600mm	6 Basket	Upgrade Grey Glass	Soft Close



## HIGH END KITCHEN STORAGE PURPLE CRYSTAL



Basket is made of alloy  
(chromed purple)  
and tempered glass

### Loading Capacity

Max Loading 75kg, each Basket  
Max loading 15kg. Suggesting cabinet  
door being mounted with 165\* hinge

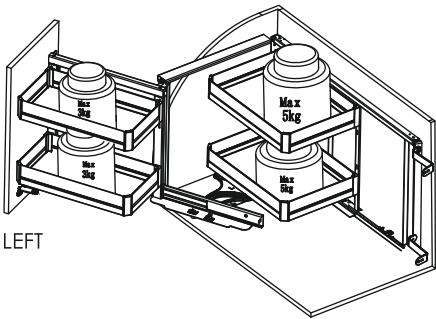
Unique linkage design, open the door at the same time with all the baskets, convenient storage. Mute design, so that the product in the process of opening and closing, always maintain a smooth and smooth effect. Double guide rail design, a change of the previous single guide rail mode, strengthen the bearing capacity of the product.



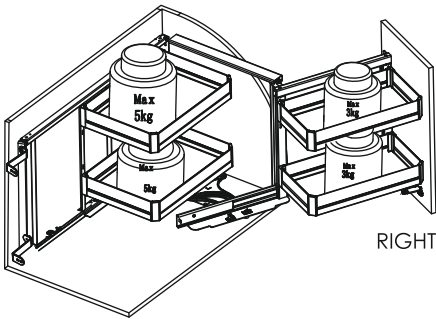
## AIRCRAFT CARRIER CABIN

PRODUCT CODE	SPECIFICATION (W x D x H)	CARCASE SIZE	DESCRIPTION	FINISH	TYPE
PCACC - 70714	(404 x 424) x 500 x 1780mm	450mm	5 Basket	Upgrade Grey Glass	Soft Close
PCACC - 70715	(564 x 574) x 500 x 1780mm	600mm	5 Basket	Upgrade Grey Glass	Soft Close

HIGH END KITCHEN STORAGE  
PURPLE CRYSTAL



LEFT



RIGHT

**Loading Capacity**

Max Load of each bigger Basket is 5kg, Max load of each smaller Basket is 3kg.

Basket is made of alloy (chromed purple) and tempered glass

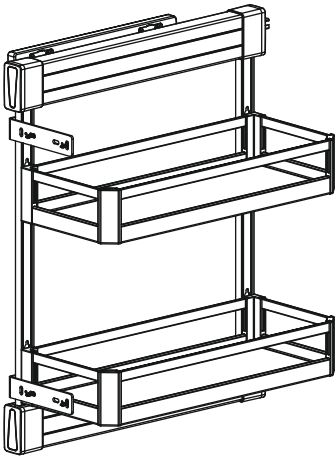
Little monster series, make full use of kitchen corner space, realize all articles pull out Cabinet width body.



**MAGIC CORNER**

PRODUCT CODE	SPECIFICATION (W x D x H)	CARCASE SIZE	DESCRIPTION	FINISH	TYPE
PCMC - 70711 (LEFT)	(860-960) x 530 x 520mm	900-1000mm	Left Opening	Upgrade Grey Glass	Soft Close
PCMC - 70711 (RIGHT)	(860-960) x 530 x 520mm	900-1000mm	Right Opening	Upgrade Grey Glass	Soft Close

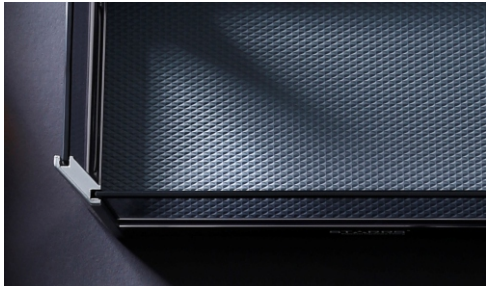
# HIGH END KITCHEN STORAGE PURPLE CRYSTAL



Basket is made of alloy (chromed purple) and tempered glass

**Loading Capacity**  
**Germany Brand HURMAR Soft-Close** synchronous slide, smooth movement Max loading 30kg

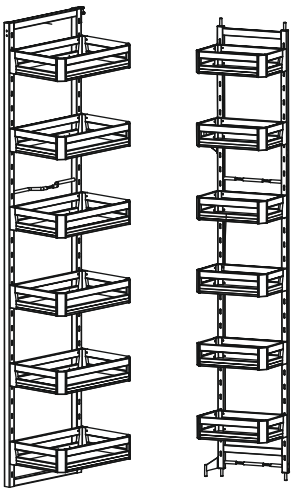
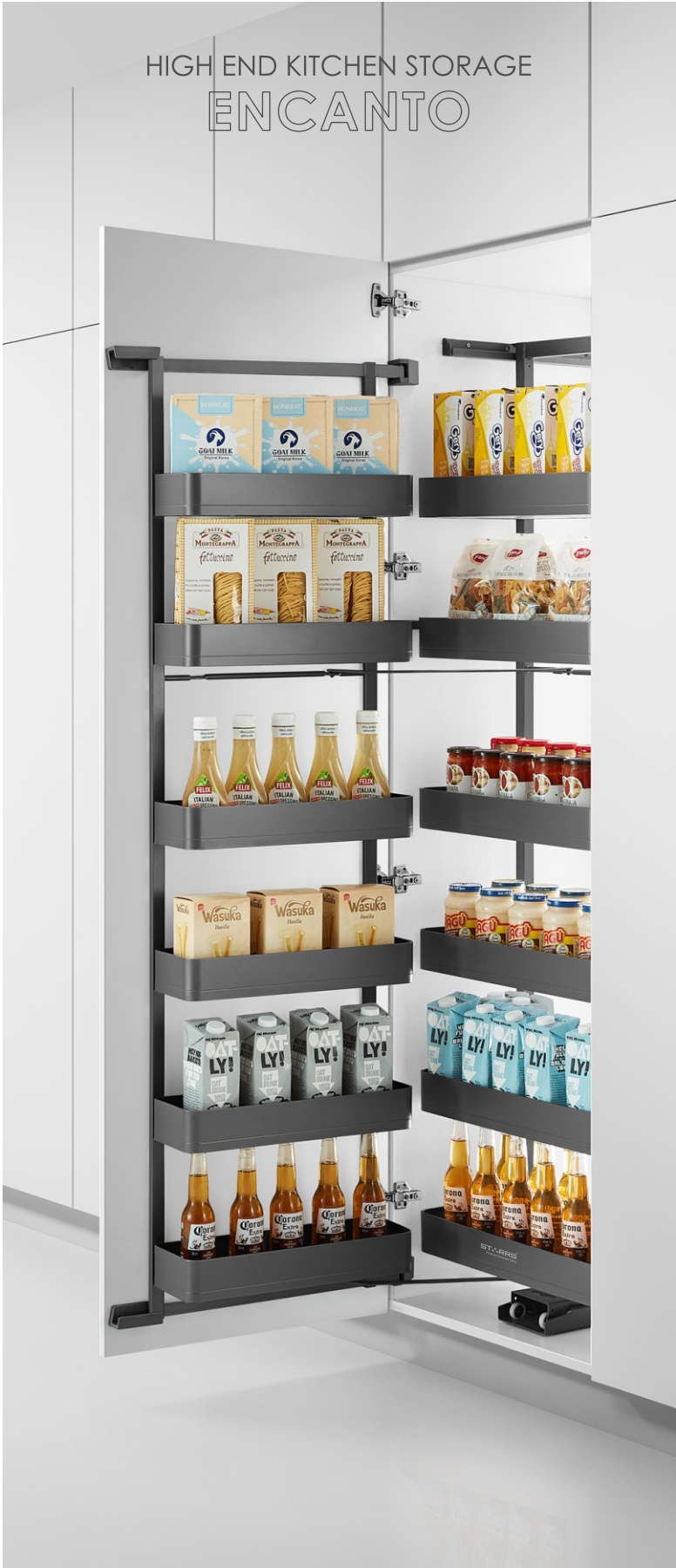
Simplicity, comfortable home, cutting-edge technology, exquisite craft, art and life perfectly fit.



## SIDE MOUNTED PULLOUT

PRODUCT CODE	SPECIFICATION (W x D x H)	CARCASE SIZE	DESCRIPTION	FINISH	TYPE
PCSMP - 70716	135 x 485 x 580mm	200mm	2 Basket	Upgrade Grey Glass	Soft Close
PCSMP - 70717	235 x 485 x 580mm	300mm	2 Basket	Upgrade Grey Glass	Soft Close



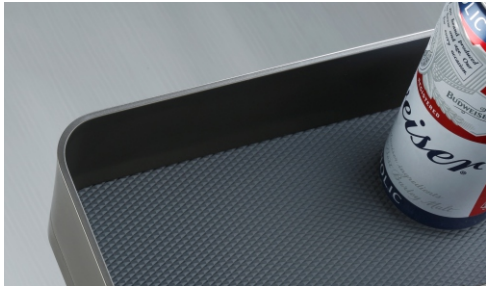


Basket is made of Aluminium

**Surface treatment**  
Fluorocarbon coating

**Loading Capacity**  
Max Loading for each bigger Basket 5kg,  
Max loading for each smaller Basket 3kg.

Slim side design, interpreting minimalism and light luxury style, enhance the taste of kitchen storage. The bottom is covered by non-slip mat, prevent the items from collision, and convenient to clean at the same time.



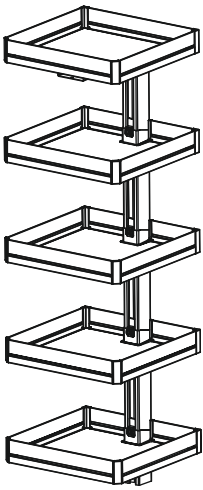
**PANTRY ROLL OUT**

PRODUCT CODE	SPECIFICATION (W x D x H)	CARCASE SIZE	DESCRIPTION	FINISH	TYPE
EPRO - 60612	405 x 500 x 1780mm	450mm	6 Basket	Grey	Soft Close
EPRO - 60613	555 x 500 x 1780mm	600mm	6 Basket	Grey	Soft Close





HIGH END KITCHEN STORAGE  
ENCANTO



Basket is made of  
Aluminium

**Surface treatment**  
Fluorocarbon coating

**Loading Capacity**

Max Loading 75kg, each Basket Max loading 15kg. Suggesting cabinet door being mounted with 165\* hinge

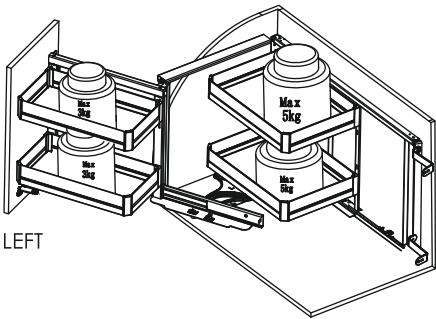
Unique linkage design, open the door at the same time with all the baskets, convenient storage. Mute design, so that the product in the process of opening and closing, always maintain a smooth and smooth effect. Double guide rail design, a change of the previous single guide rail mode, strengthen the bearing capacity of the product.



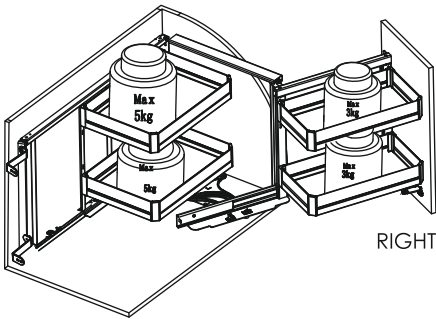
**AIRCRAFT CARRIER CABIN**

PRODUCT CODE	SPECIFICATION (W x D x H)	CARCASE SIZE	DESCRIPTION	FINISH	TYPE
EACC - 60614	(404-424) x 500 x 1780mm	450mm	5 Basket	Grey	Soft Close
EACC - 60615	(554-574) x 500 x 1780mm	600mm	5 Basket	Grey	Soft Close

HIGH END KITCHEN STORAGE  
ENCANTO



LEFT



RIGHT

**Loading Capacity**

Max Load of each bigger Basket is 5kg, Max load of each smaller Basket is 3kg.

**Surface treatment**

Fluorocarbon coating

Basket is made of Aluminium

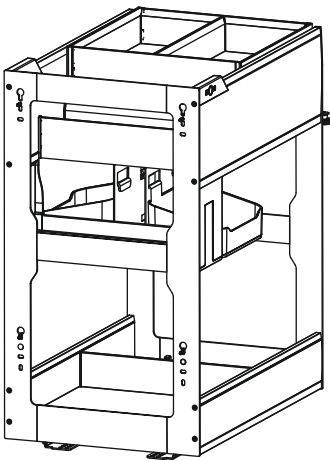
Little monster series, make full use of kitchen corner space, realize all articles pull out Cabinet width body.



**MAGIC CORNER**

PRODUCT CODE	SPECIFICATION (W x D x H)	CARCASE SIZE	DESCRIPTION	FINISH	TYPE
EMC - 60611 (LEFT)	(860-960) x 530 x 520mm	900-1000mm	Left Opening	Grey	Soft Close
EMC - 60611 (RIGHT)	(860-960) x 530 x 520mm	900-1000mm	Right Opening	Grey	Soft Close

HIGH END KITCHEN STORAGE  
ENCANTO

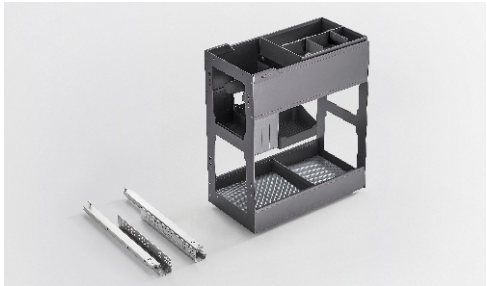


Basket is made of  
Aluminium

**Surface treatment**  
Fluorocarbon coating

**Loading Capacity**  
**Germany Brand HURMAR Soft-Close**  
synchronize slide, smooth movement Max  
loading 30kg

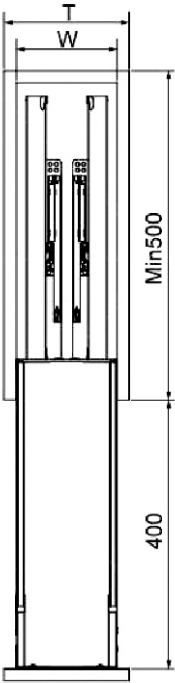
Simplicity, comfortable home, cutting  
edge technology, exquisite craft, art and  
life perfectly fit.



MULTI FUNCTION PULLOUT

PRODUCT CODE	SPECIFICATION (W x D x H)	CARCASE SIZE	DESCRIPTION	FINISH	TYPE
EMFP - 60617	264 x 470 x 552mm	300mm	2 Basket	Grey	Soft Close

# HIGH END KITCHEN STORAGE ENCANTO

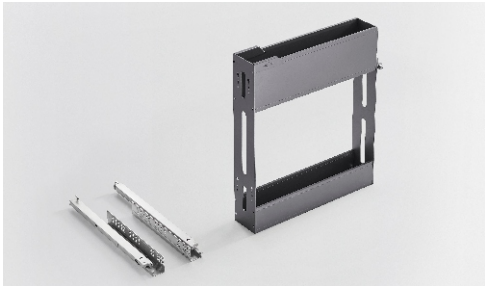


Basket is made of Aluminium

**Surface treatment**  
Fluorocarbon coating

**Loading Capacity**  
**Germany Brand HURMAR Soft-Close**  
synchronize slide, smooth movement Max loading 30kg

Simplicity, comfortable home, cutting edge technology, exquisite craft, art and life perfectly fit.

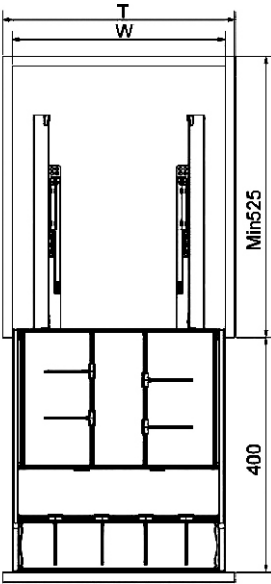


### BOTTOM MOUNTED PULLOUT

PRODUCT CODE	SPECIFICATION (W x D x H)	CARCASE SIZE	DESCRIPTION	FINISH	TYPE
EBMP - 60616	164 x 470 x 552mm	200mm	2 Basket	Grey	Soft Close



# HIGH END KITCHEN STORAGE ENCANTO



Basket is made of Aluminium

**Surface treatment**  
Fluorocarbon coating

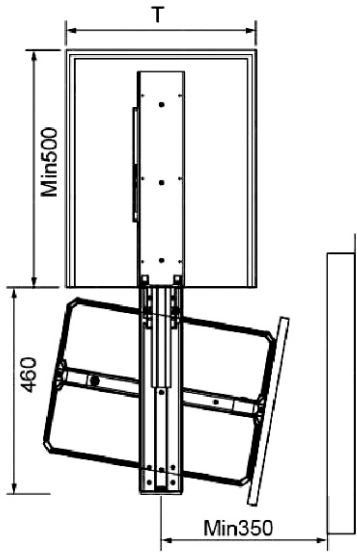
**Loading Capacity**  
**Germany Brand HURMAR Soft-Close**  
synchronize slide, smooth movement Max loading 30kg

Simplicity, comfortable home, cutting edge technology, exquisite craft, art and life perfectly fit.



### MULTI FUNCTION PULLOUT

PRODUCT CODE	SPECIFICATION (W X D X H)	CARCASE SIZE	DESCRIPTION	FINISH	TYPE
EMFP - 60618	414 x 490 x 552 MM	450 MM	With Slidable Cutlery	Grey	Soft Close



Basket is made of  
Aluminium

**Surface treatment**  
Technology, running smooth and stable.

**Loading Capacity**  
**Germany Brand Hurmar Soft-Close**  
synchronize slide, smooth movement Max  
loading of each basket 10 K.G.

Simplicity, comfortable home, cutting  
edge technology, exquisite craft, art and  
life perfectly fit.



**REVOLVING TALL UNIT**

PRODUCT CODE	SPECIFICATION (W X D X H)	CARCASE SIZE	DESCRIPTION	FINISH	TYPE
ERTU-60619	340 x 480 x (1780-2080)	400 MM	6 Basket	Grey	Soft Close

HIGH END KITCHEN STORAGE  
ENCANTO



Loading Capacity

Max Load of Baskets 10kg.

Surface treatment

Fluorocarbon coating,  
strong, rust resistance, abrasive resistance.

Basket is made of  
Aluminium

It will complement the tall cabinets, optimizing vertical storage space in the kitchen and expanding overall storage capacity.



DOUBLE LAYER LIFTER

PRODUCT CODE	SPECIFICATION (W X D X H)	CARCASE SIZE	DESCRIPTION	FINISH	TYPE
EDLL-60620	864 x 238 x 572 MM	900 MM	2 Layers	Grey	Soft Close



SMART LIFTING CABINET  
WITH UP MOVING DOOR

PRODUCT CODE	SLC-60621
SPECIFICATION (W X H)	900 MM x 700 MM
DESCRIPTION	Press for Up & Down
FINISH	Grey
TYPE	Soft Close



High Load  
Capacity



Easy  
Installation



**CUTLERY TRAY :**

- Soft touch feeling, 100% food grade raw material.
- Innovative cutlery tray with simple and Anti Slip Bottom.



PRODUCT CODE	SCT-600
SPECIFICATION (W X D X H)	(550-490) x (490-420) x 55
CARCASE SIZE	600 MM
FINISH	Dark Grey
TYPE	Soft Touch



PRODUCT CODE	SCT-700
SPECIFICATION (W X D X H)	(650-590) x (490-420) x 55
CARCASE SIZE	700 MM
FINISH	Dark Grey
TYPE	Soft Touch



PRODUCT CODE	SCT-800
SPECIFICATION (W X D X H)	(750-690) x (490-420) x 55
CARCASE SIZE	800 MM
FINISH	Dark Grey
TYPE	Soft Touch



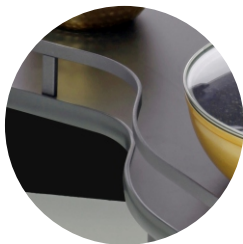
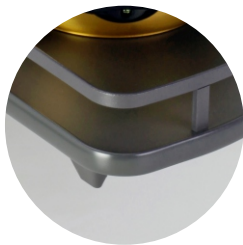
PRODUCT CODE	SCT-900
SPECIFICATION (W X D X H)	(850-790) x (490-420) x 55
CARCASE SIZE	900 MM
FINISH	Dark Grey
TYPE	Soft Touch



**OYA - CUTLERY TRAY**

PRODUCT CODE	CARCASE SIZE	FINISH
OCT - 450	450mm	Grey
OCT - 600	600mm	Grey





**S-CORNER**

PRODUCT CODE	SC - 01
FINISH	Grey
DESCRIPTION	Right/Left, Soft Closing
CARCASE SIZE	900 - 1000mm



for installation video  
please scan barcode



High Load  
Capacity



Easy  
Installation



**WASTE BIN**

- Updated Clean & Modern Easy Bottom Mounted Design with pullout handle type & Door Mounted type.
- Top cover has storage area and hides odours.

PRODUCT CODE	SWB-03
SPECIFICATION (W X D X H)	335 x 480 x 420 MM
CAPACITY	40 L (2 x 20 L)
DESCRIPTION	Bottom Mounted Design with Pullout Handle
FINISH	Dark Grey
TYPE	Soft Close



## DOOR MOUNT BRACKET

PRODUCT CODE	DMB-03
DESCRIPTION	(Use for SWB-03) Door Mount
FINISH	Dark Grey



## SWING OUT BIN

PRODUCT CODE	SOB-01
SPECIFICATION (W X D X H)	300 x 300 x 280 MM
CAPACITY	8 L
DESCRIPTION	Easy Mount
FINISH	Chrome
TYPE	Soft Close



## SWING OUT BIN

PRODUCT CODE	SOB-02
SPECIFICATION (W X D X H)	320 x 360 x 360 MM
CAPACITY	14 L
DESCRIPTION	Easy Mount
FINISH	Chrome
TYPE	Soft Close



**DISH RACK**

PRODUCT CODE	SPECIFICATION (W X D X H)	CARCASE SIZE	FINISH
SDR-600	565 x 280 x 65 MM	600 MM	Chrome
SDR-700	665 x 280 x 65 MM	700 MM	Chrome
SDR-800	765 x 280 x 65 MM	800 MM	Chrome
SDR-900	865 x 280 x 65 MM	900 MM	Chrome
SDR-1000	965 x 280 x 65 MM	1000 MM	Chrome



# DRAWERS







High Load  
Capacity



Easy  
Installation

## SLIM TANDEM BOX

PRODUCT CODE	STB-01					
FINISH	Grey Matt					
DESCRIPTION	Weight Capacity : 40 kg					
SIZE (H X D)	84 x 300mm	84 x 350mm	84 x 400mm	84 x 450mm	84 x 500mm	84 x 550mm
SIZE (H X D)	167 x 300mm	167 x 350mm	167 x 400mm	167 x 450mm	167 x 500mm	167 x 550mm
SIZE (H X D)	199 x 300mm	199 x 350mm	199 x 400mm	199 x 450mm	199 x 500mm	199 x 550mm



## GLASS TANDEM BOX

PRODUCT CODE	GTB-02		
FINISH	Grey Matt + Transparent Glass		
DESCRIPTION	Weight Capacity : 40 kg		
SIZE (H X D)	84 x 400mm	84 x 450mm	84 x 500mm
SIZE (H X D)	167 x 400mm	167 x 450mm	167 x 500mm
SIZE (H X D)	199 x 400mm	199 x 450mm	199 x 500mm



High Load  
Capacity



Easy  
Installation



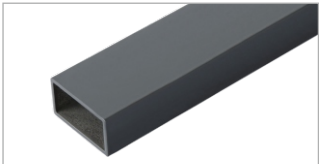
**FRONT CONNECTOR (L&R)**

CODE	SIZE
SFC-84	Height : 84mm
SFC-167	Height : 167mm
SFC-199	Height : 199mm



**FRONT PANEL**

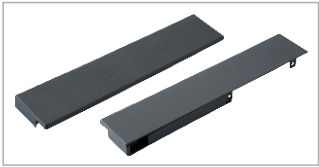
PRODUCT CODE	SFP-1200
MATERIAL	Aluminum
DESCRIPTION	Size : 1200mm
FINISH	Grey Matt



**SQUARE BAR**

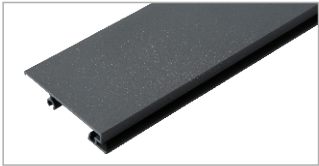
PRODUCT CODE	SSB-1200
MATERIAL	Aluminum
DESCRIPTION	Size : 1200mm
FINISH	Grey Matt





**FULL GLASS  
FRONT CONNECTOR (L&R)**

PRODUCT CODE	SIZE
FG-FC-84	Height : 84mm
FG-FC-167	Height : 167mm
FG-FC-199	Height : 199mm



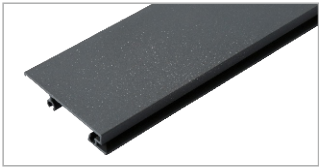
**FRONT PANEL**

PRODUCT CODE	GFP-1200
MATERIAL	Aluminum
DESCRIPTION	Size : 1200mm
FINISH	Grey Matt



**HALF GLASS  
FRONT CONNECTOR (L&R)**

PRODUCT CODE	SIZE
HG-FC-167	Height : 167mm
HG-FC-199	Height : 199mm



**FRONT PANEL**

PRODUCT CODE	GFP-1200
MATERIAL	Aluminum
DESCRIPTION	Size : 1200mm
FINISH	Grey Matt



<b>PRODUCT NAME</b>	Non-Slip Drawer Mat
<b>SIZE</b>	10Mtrs (L) x 500mm (H) 20Mtrs (L) x 500mm (H)
<b>COLOUR</b>	Dark Grey

#### Features

- Non-Slip Drawer Mat is perfectly manufactured for drawers, cabinets, cup-boards, shelves, desks, etc.
- It is made of BPA-Free and odourless EVA material which is non-slip, waterproof and flexible.
- This mat is supplied in rolls or can be cut into any shapes or size.
- It is non-adhesive, easy to clean and washable.



[www.starrs.in](http://www.starrs.in)  
[sales.starrs@gmail.com](mailto:sales.starrs@gmail.com)



for download catalog  
please scan barcode