

GS CLASS

Ball-Bearing Slide Systems





KITCHEN & BATHROOM FURNITURE

- ▶ Smooth running performance
- ▶ Dynamic loading capacity up to 45 kg
- ▶ Improved soft-close technology
- ▶ High quality coating

OFFICE AREAS

- ▶ Smooth running performance
- ▶ Drawer length up to 700 mm for office furnitures
- ▶ Improved soft-close technology
- ▶ Long life-cycle



LIVING AREAS

- Smooth running performance ◀
- High rigidity & robust structure ◀
 - High tolerance ◀
 - values for easy-assembly





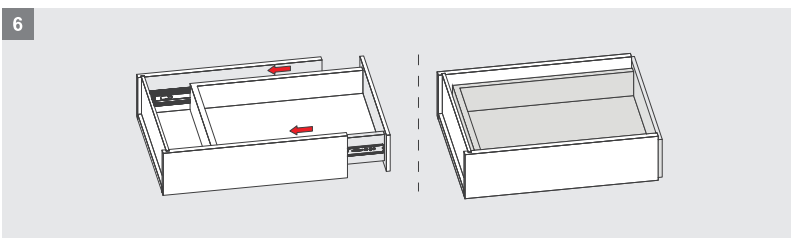
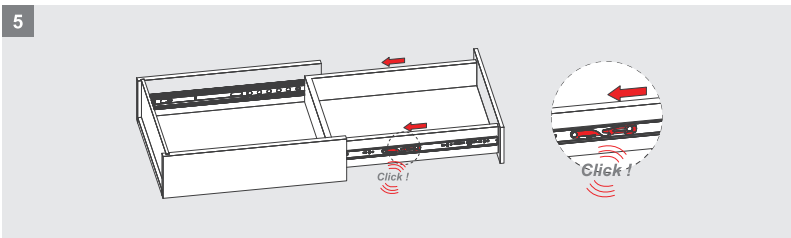
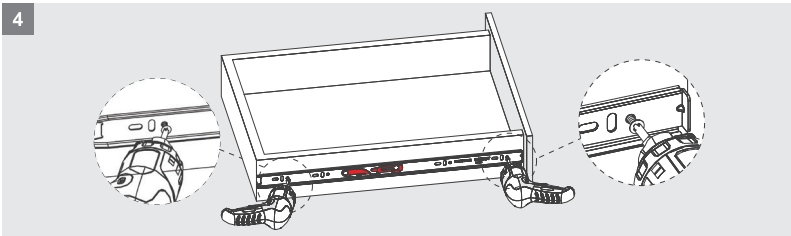
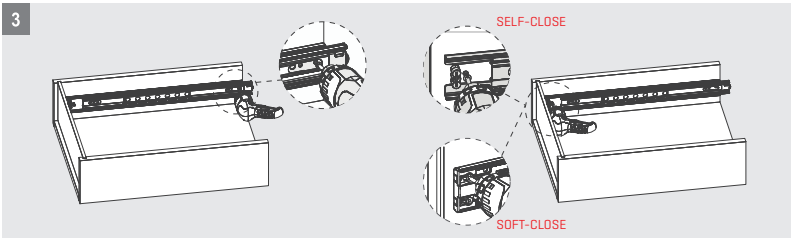
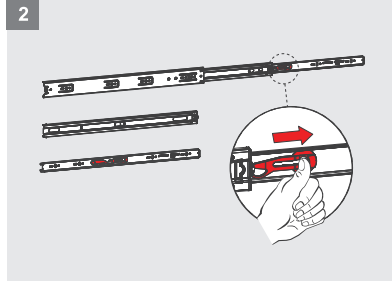
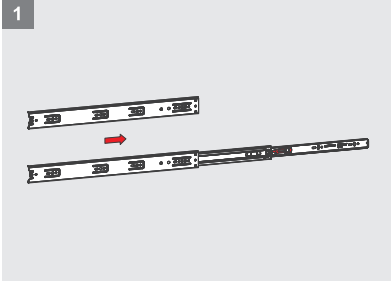
TECHNICAL FEATURES

- ▶ Engineered movement technology ensures smooth running performance
- ▶ Improved soft-close technology
- ▶ High tolerance values for easy-assembly
- ▶ High rigidity & robust structure with high-quality balls & profiles
 - Drawer Lengths: 250 - 700 mm
 - 35 - 45 kg loading capacity
 - Full-extension (46 mm) slides
 - 46 mm soft-close; 46 mm self-close latched assembly options



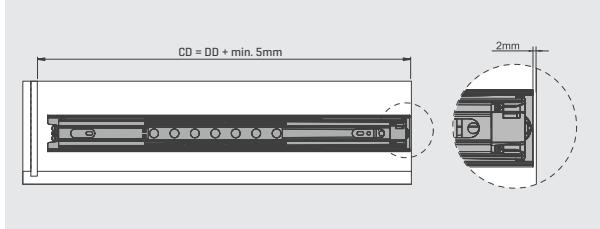
GS  CLASS
Ball-Bearing Slide Systems

FULL EXTENSION SLIDE ASSEMBLY INSTRUCTIONS

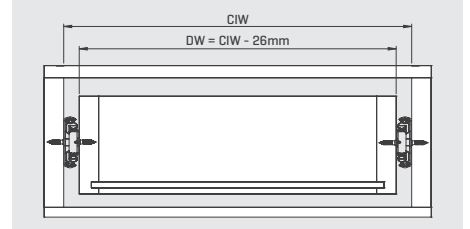


46 mm FULL EXTENSION SLIDE SYSTEM

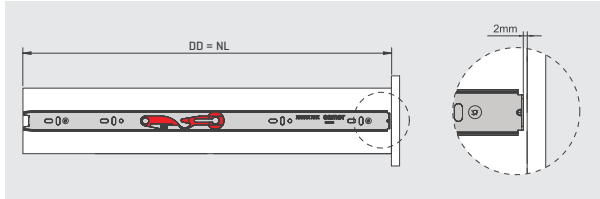
Cabinet Dimensions



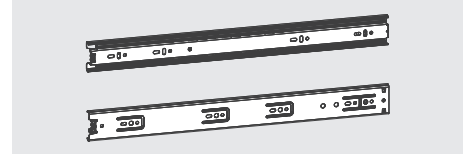
Technical Dimensions



Drawer Dimensions



Parts



CIW : Cabinet Inner Width
DW : Drawer Width

CD : Cabinet Depth
DD : Drawer Depth

NL : Nominal Length

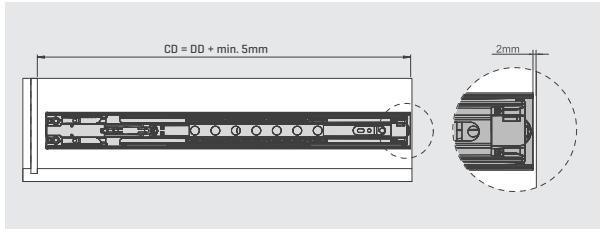
Recommended Screw



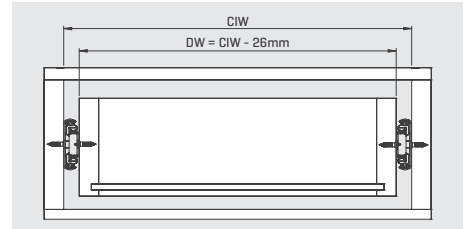
Ø3,5 x 16mm

46 mm FULL EXTENSION SOFT-CLOSE SLIDE SYSTEM

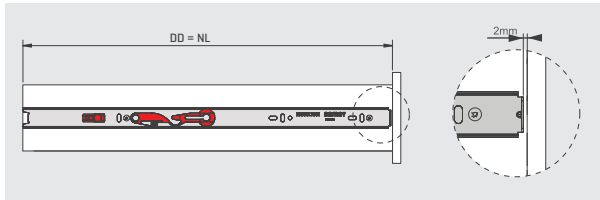
Cabinet Dimensions



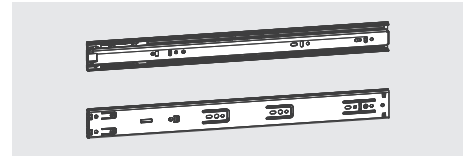
Technical Dimensions



Drawer Dimensions



Parts



CIW : Cabinet Inner Width
DW : Drawer Width

CD : Cabinet Depth
DD : Drawer Depth

NL : Nominal Length

Recommended Screw



Ø3,5 x 16mm

46 mm FULL EXTENSION SLIDE SYSTEM

Code Clear Zinc	Slide Length mm	Slide Travel mm	Loading Capacity kg	Quantity in box set
11661151784	250	254	45	12 Set
11661152784	300	305	45	12 Set
11661153784	350	356	45	12 Set
11661154784	400	406	45	12 Set
11661155784	450	453	45	12 Set
11661156784	500	515	45	12 Set
11661157784	550	565	45	12 Set
11661158784	600	615	45	12 Set
11661159784	650	665	45	12 Set
11661160784	700	712	45	12 Set

46 mm FULL EXTENSION SOFT-CLOSE SLIDE SYSTEM

Code Clear Zinc	Slide Length mm	Slide Travel mm	Loading Capacity kg	Quantity in box set
11662152784	300	289	35	12 Set
11662153784	350	355	35	12 Set
11662154784	400	410	35	12 Set
11662155784	450	460	35	12 Set
11662156784	500	510	35	12 Set
11662157784	550	560	35	12 Set
11662158784	600	610	35	12 Set
11662159784	650	660	35	12 Set
11662160784	700	710	35	12 Set

46 mm BLACK FULL EXTENSION SLIDE SYSTEM

Code Black	Slide Length mm	Slide Travel mm	Loading Capacity kg	Quantity in box set
11661551784	250	254	45	12 Set
11661552784	300	305	45	12 Set
11661553784	350	356	45	12 Set
11661554784	400	406	45	12 Set
11661555784	450	453	45	12 Set
11661556784	500	515	45	12 Set
11661557784	550	565	45	12 Set
11661558784	600	615	45	12 Set
11661559784	650	665	45	12 Set
11661560784	700	712	45	12 Set

46 mm BLACK FULL EXTENSION SOFT-CLOSE SLIDE SYSTEM

Code Black	Slide Length mm	Slide Travel mm	Loading Capacity kg	Quantity in box set
11662552784	300	289	35	12 Set
11662553784	350	355	35	12 Set
11662554784	400	410	35	12 Set
11662555784	450	460	35	12 Set
11662556784	500	510	35	12 Set
11662557784	550	560	35	12 Set
11662558784	600	610	35	12 Set
11662559784	650	660	35	12 Set
11662560784	700	710	35	12 Set






GS CLASS

Ball-Bearing Slide Systems





www.greenplysamet.com

-  Greenply-Samet
-  GreenplySamet
-  GreenplySamet
-  GreenplySamet
-  GreenplySamet