

# BREEZE BLOCKS<sup>®</sup>



Love at first sight



Love at  
first sight



## Breeze Blocks Are the Best New Thing to Happen to Exteriors & Interiors!



Breeze Blocks adds a decorative dimension to architecture, as well as providing privacy and protection but with a feeling of openness and weightlessness. Thanks to skillful artisans plus the creation from modern designers and

architects. Breeze Blocks are handmade from White Sand & Cement. These Blocks have been leveraged to be the unique artworks in its popular applications such as Ventilation Facade walls, Partitions, Fences, Indoor and Outdoor elevation.



DESIGN  
FLEXIBILITY



100%  
ASBESTOS FREE



ALL WEATHER  
RESISTANT



FIRE  
RESISTANT



TERMITE  
FREE



FUNGUS  
FREE



COST &  
TIME SAVING

WHITE

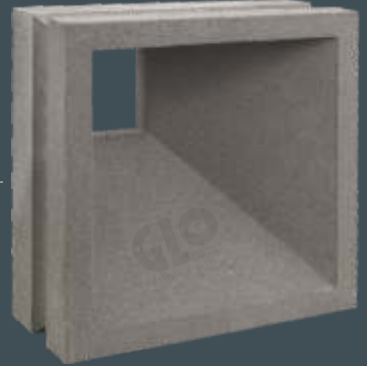
MODEL

**ALASKA**  
PREMIUM

GREY



Size: 190mm x 190mm x 80mm



Per Box Qty.: 4 Pcs.  
Weight: 3.6 Kgs P/Pcs. (Approx)

Size: 195mm x 195mm x 80mm



WHITE

MODEL

**PYRAMID**  
PREMIUM

GREY



Size: 240mm x 200mm x 80mm



Per Box Qty.: 2 Pcs.  
Weight: 2.8 Kgs P/Pcs. (Approx)

Size: 240mm x 200mm x 80mm



WHITE

MODEL

COVER

GREY



Per Box Qty.: 4 Pcs.

Weight: 2.6 Kgs P/Pcs. [Approx]

Size: 190mm x 190mm x 65mm

Size: 195mm x 195mm x 65mm



WHITE

MODEL

3 BOX

GREY



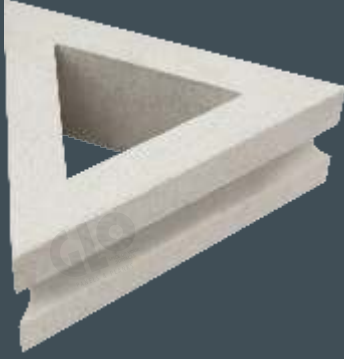
Per Box Qty.: 4 Pcs.

Weight: 2.8 Kgs P/Pcs. [Approx]

Size: 190mm x 190mm x 65mm

Size: 195mm x 195mm x 65mm

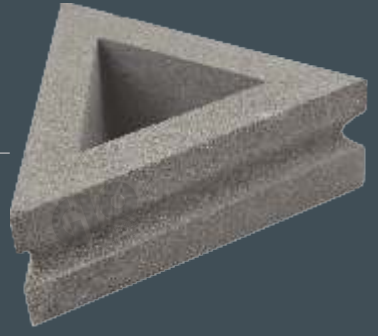
WHITE



MODEL

**TRIANGLE**

GREY



Per Box Qty.: 8 Pcs.

Weight: 1.5 Kgs P/Pcs. (Approx)

Size: 190mm x 190mm x 190mm x 65mm

Size: 195mm x 195mm x 195mm x 65mm



WHITE



MODEL

**LIGHT**

GREY



Per Box Qty.: 4 Pcs.

Weight: 2.1 Kgs P/Pcs. (Approx)

Size: 190mm x 190mm x 65mm

Size: 195mm x 195mm x 65mm

WHITE

MODEL

**MOUNTAIN**

GREY



Size: 190mm x 190mm x 65mm



Size: 195mm x 195mm x 65mm

Per Box Qty.: 3 Pcs.

Weight: 2.6 Kgs P/Pcs. (Approx)



WHITE

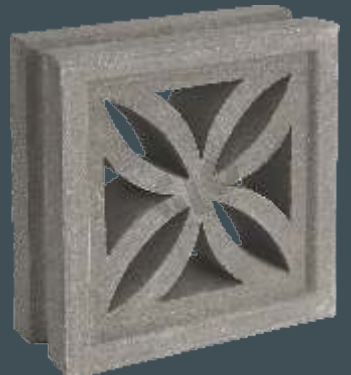
MODEL

**FLOWER**

GREY



Size: 190mm x 190mm x 65mm



Size: 195mm x 195mm x 65mm

Per Box Qty.: 4 Pcs.

Weight: 2.9 Kgs P/Pcs. (Approx)

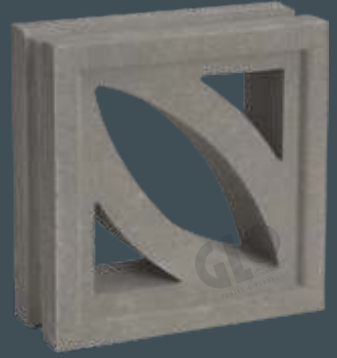


WHITE

MODEL

LEAF

GREY



Size: 190mm x 190mm x 65mm

Per Box Qty.: 4 Pcs.  
Weight: 2.8 Kgs P/Pcs. (Approx)

Size: 195mm x 195mm x 65mm

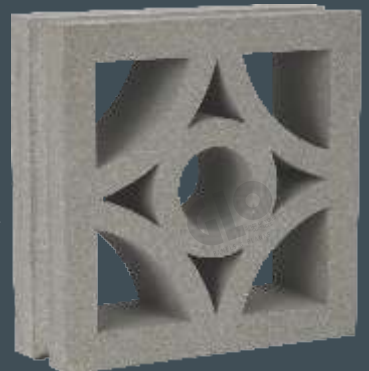


WHITE

MODEL

TALY

GREY



Size: 190mm x 190mm x 65mm

Per Box Qty.: 4 Pcs.  
Weight: 2.6 Kgs P/Pcs. (Approx)

Size: 195mm x 195mm x 65mm

WHITE

MODEL

**FLORAL**

GREY



Size: 190mm x 190mm x 65mm



Size: 195mm x 195mm x 65mm

Per Box Qty.: 4 Pcs.

Weight: 2.6 Kgs P/Pcs. (Approx)



WHITE

MODEL

**FIELD 1**

GREY



Size: 190mm x 190mm x 65mm



Size: 195mm x 195mm x 65mm

Per Box Qty.: 4 Pcs.

Weight: 3 Kgs P/Pcs. (Approx)



WHITE

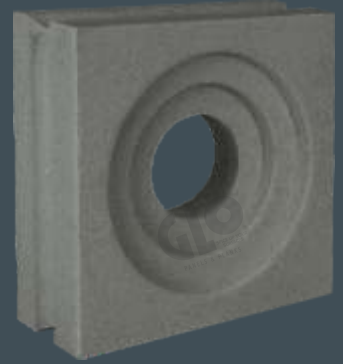
MODEL

**FIELD 2**

GREY



Size: 190mm x 190mm x 65mm



Size: 195mm x 195mm x 65mm

Per Box Qty.: 4 Pcs.

Weight: 2.9 Kgs P/Pcs. [Approx]



WHITE

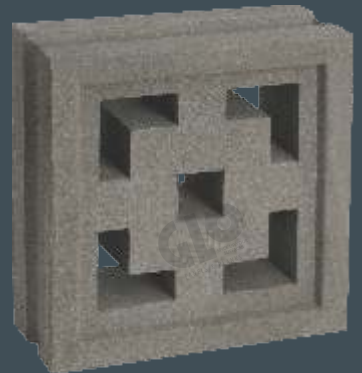
MODEL

**CUBE**

GREY



Size: 190mm x 190mm x 65mm



Size: 195mm x 195mm x 65mm

Per Box Qty.: 4 Pcs.

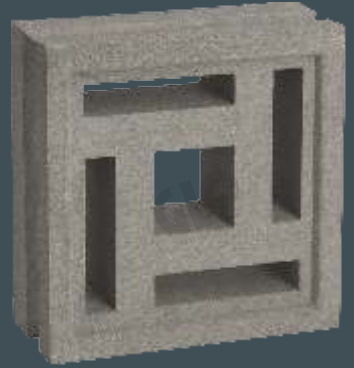
Weight: 2.9 Kgs P/Pcs. [Approx]

WHITE

MODEL

**MAZE**

GREY



Size: 190mm x 190mm x 65mm

Per Box Qty.: 4 Pcs.  
Weight: 2.8 Kgs P/Pcs. (Approx)

Size: 195mm x 195mm x 65mm



WHITE

MODEL

**SEAFOAM**

GREY



Size: 190mm x 190mm x 65mm

Per Box Qty.: 4 Pcs.  
Weight: 2.9 Kgs P/Pcs. (Approx)

Size: 195mm x 195mm x 65mm

WHITE

MODEL

**TROPICAL**

GREY



Size: 295mm x 295mm x 65mm



Size: 295mm x 295mm x 65mm

Per Box Qty.: 4 Pcs.

Weight: 3.00 Kgs P/Pcs. (Approx)



WHITE

MODEL

**GIZA 2  
PREMIUM**

GREY



Size: 290mm x 290mm x 90mm



Size: 290mm x 290mm x 90mm

Per Box Qty.: 2 Pcs.

Weight: 11 Kgs P/Pcs. (Approx)



WHITE

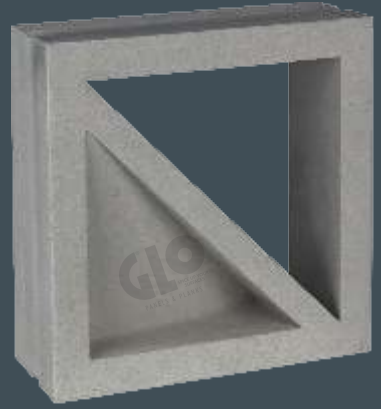
MODEL

**CONNECT**

GREY



Size: 290mm x 290mm x 90mm



Size: 290mm x 290mm x 90mm

Per Box Qty.: 2 Pcs.

Weight: 7.5 Kgs P/Pcs. (Approx)



WHITE

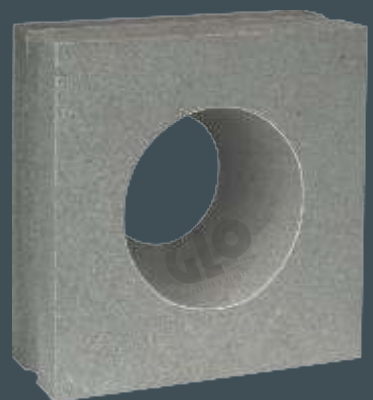
MODEL

**CONES**

GREY



Size: 290mm x 290mm x 90mm



Size: 290mm x 290mm x 90mm

Per Box Qty.: 2 Pcs.

Weight: 11.00 Kgs P/Pcs. (Approx)

WHITE

MODEL

**SUNSTORY**

GREY



Size: 290mm x 290mm x 90mm

Per Box Qty.: 2 Pcs.  
Weight: 8.8 Kgs P/Pcs. (Approx)



Size: 290mm x 290mm x 90mm



WHITE

MODEL

**STARS**

GREY



Size: 290mm x 290mm x 90mm

Per Box Qty.: 2 Pcs.  
Weight: 7.4 Kgs P/Pcs. (Approx)



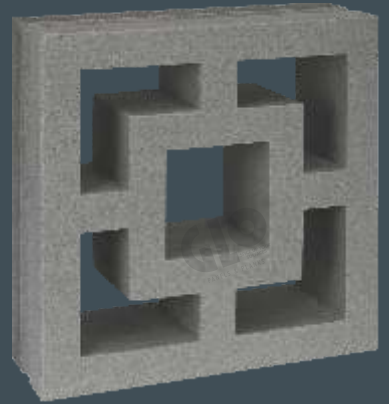
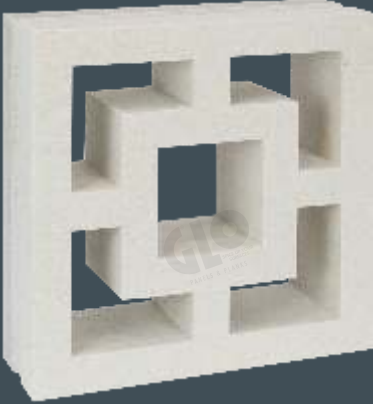
Size: 290mm x 290mm x 90mm

WHITE

MODEL

SQUARES

GREY



Per Box Qty.: 2 Pcs.

Weight: 8.7 Kgs P/Pcs. (Approx)

Size: 290mm x 290mm x 90mm

Size: 290mm x 290mm x 90mm





## INSTALLATION

### 1. Preparing the installation site:

- Do not install the breeze block on the smooth and fragile bases such as ceramics, mosaic, tiles.

### 2. Preparing the mortar mixture:

- Option 1: Using the normal mortar mixture which is the same to install other building materials like bricks, blocks. We recommend using the white cement for the mortar.
- Option 2: Using the special ready mix mortar or cement adhesive for wall and following up the instruction of mortar manufacturer

**Notes:** The mortar mixture must be dry enough (not too wet), and choose the mortar grade on the request of the project.

### 3. Watering, curing the breeze cement blocks

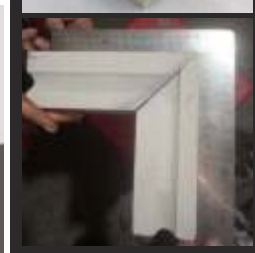
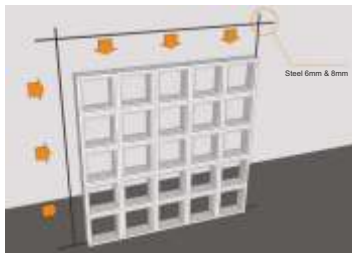
- Watering the breeze blocks before installation is important.
- Watering the finish wall after installation within 5 consecutive days (4 times per day).
- These steps are very important which effected directly to the wall quality later.

### 4. Preparing the installation space:

- Measuring the height and width of the estimated wall.
- Equally divided the distance of the blocks.
- Using the specialized tools to make sure the perpendicular of the wall on the ground surface.

### 5. Installation:

- Starting the first block from the bottom corner
- Applying the 10mm mortar layer on each top and side faces of the block and lay they fix into the correct positions.
- Using the trowel to float the mortar joints. Getting all the redundant parts out to get the nice joint looking.
- The best joints are in between 5-10mm. It can be flexible changed but less than 20mm for the installation areas of over 2.5 meter height x 3 meter width
- Using the normal tile cutting machine (same as cutting machine for encaustic cement tile, ceramic tile) if needed.
- If the wall is over 2.5 meter height, it should be locked by the 3-5cm concrete beam.
- If the wall is over 4 meter width, it should be locked by the concrete or brick pillar
- The anchorages should be used for the installation of the big walls.
- Water based acrylic paint to used.



\*This guidance gives you an introduction on how to install the small walls by breeze blocks. It made by our experience within Vietnam local market.

\*\*Each area/country has different weather, installation standard, and specialized tool. Please check with your local experienced experts to get the suitable instruction on each specific project.