



DECONYXTM
The Unbreakable Elegance

Feel Natural...

Luxuriously Unique Translucent Sheets



Index

1) Premium Stone Series	4-25
2) Premium Wooden Series	26-55
3) L-Patti	56
4) Lighting Automation	57
5) Specifications	58
6) Installation Guide	59-60

First manufacturing unit to produce Exterior and Interior Grade, upgraded alabaster. As it is a non-breakable, used for Exteriors and Interiors, We can apply in huge quantity in any concept.

The best Characteristics of alabaster is that it can transmit light and has various styles and designs, It looks natural with good feel effect and is easy to install. It has advantage of being bent and has seamless joint property too. “Deconyx” is the only company in the world to produce exterior grade alabaster. Colourful architectural surface in Rustic finish is always the like of architects and we give our best to fulfil their needs. The elegance, design and quality really express the beauty of “Deconyx” material. Our upgraded technology and techniques offer visual perfection and easy in installation material for exterior and interior surface beautification. Transportation problem has no place in “Deconyx”.

“Deconyx” has a dream to provide unique and monopoly products. A lot of new products are in pipeline. Quality and service are both hands of “Deconyx”.

Features:

- Backlit Application
- Aesthetic
- Natural Look
- Highly Chemical Resistant
- Available in many Designs
- Approx Size 8'x4'
- A Versatile, Robust & Hygienic Surface
- High Resistance to External Stress
(Abrasion, Impacts, Stains etc.)
- Non Porous, Waterproof Surface

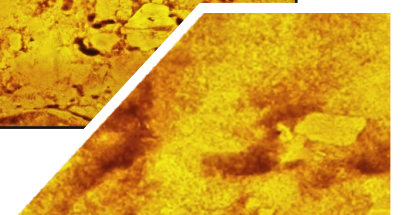
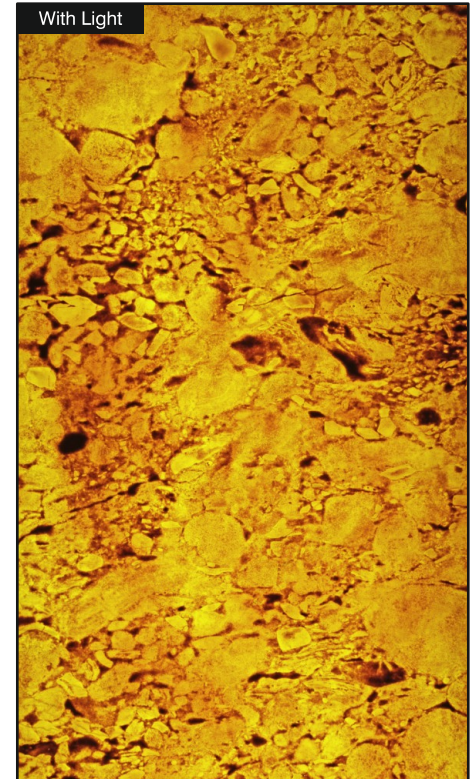
Applications:

- Hotel
- Resort
- Restaurant
- Bar
- Cafeteria
- Club house
- Banquet hall
- Mall
- Multiplex
- Showroom
- Corporate office
- Spa
- Beauty salon
- Gazebo
- Elevator
- Residence

-  Crack Resistant
-  Moisture Resistant
-  Abrasion Resistant
-  Chemical Resistant
-  Heat Resistant
-  Impact Resistant

COVERING NEW ENVIRONMENTS, WITH LAST GENERATION MATERIALS BEYOND YOUR DREAMS.

Cake Shop



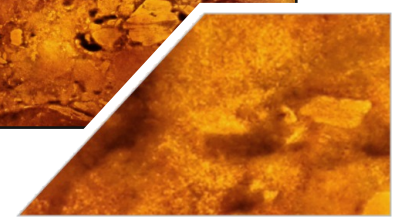
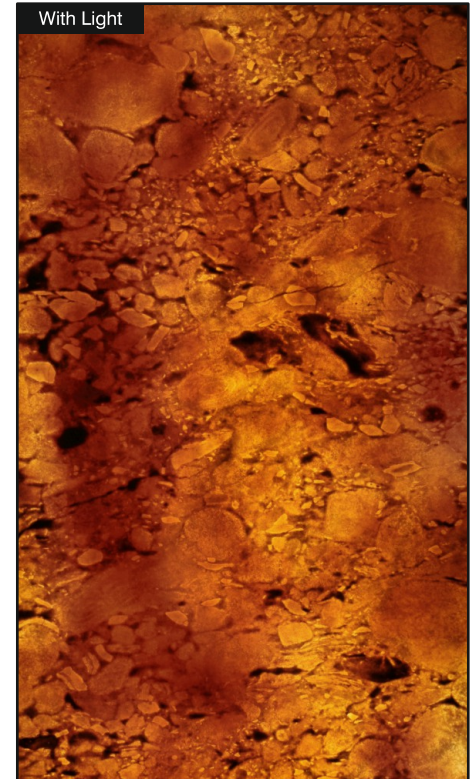
PS-101

Size:
4' x 8' (1220mm x 2440mm)
(+/- 5mm)

Thickness:
Approx 4mm

- Natural Feel
- Stone Cladding
- Rustic Surface

Villa



PS-102

Size:
4' x 8' (1220mm x 2440mm)
(+/- 5mm)

Thickness:
Approx 4mm

- Natural Feel
- Stone Cladding
- Rustic Surface

Escalators



PS-103

Size:
4' x 8' (1220mm x 2440mm)
(+/- 5mm)

Thickness:
Approx 4mm

- Natural Feel
- Stone Cladding
- Rustic Surface

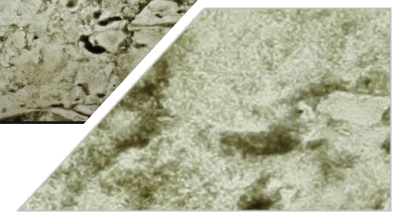
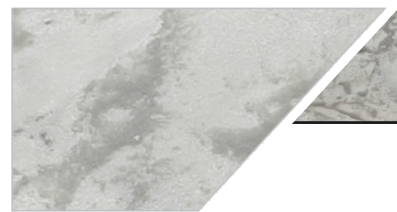
Living Room



Without Light



With Light



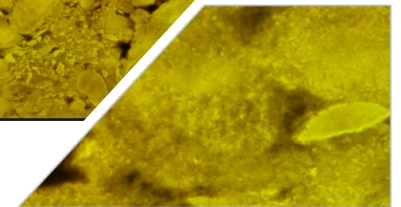
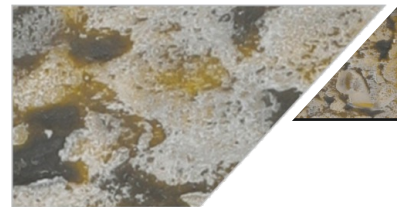
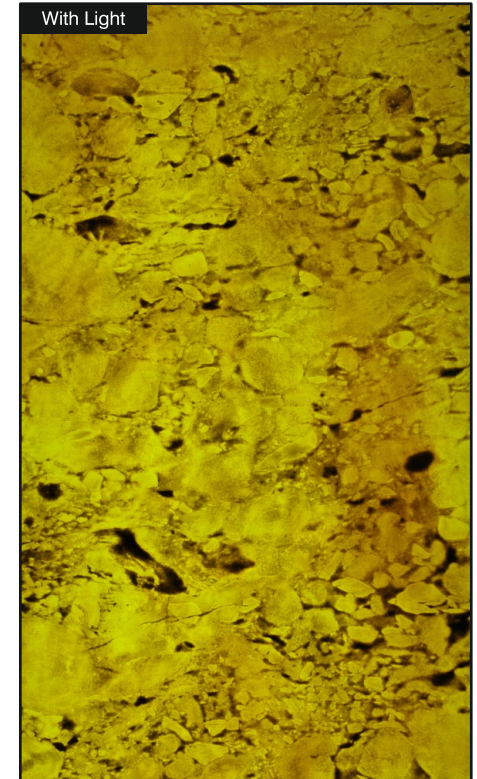
PS-104

Size:
4' x 8' (1220mm x 2440mm)
(+/- 5mm)

Thickness:
Approx 4mm

- Natural Feel
- Stone Cladding
- Rustic Surface

Bathroom Partition



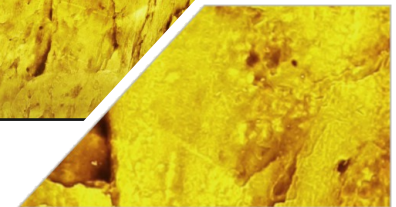
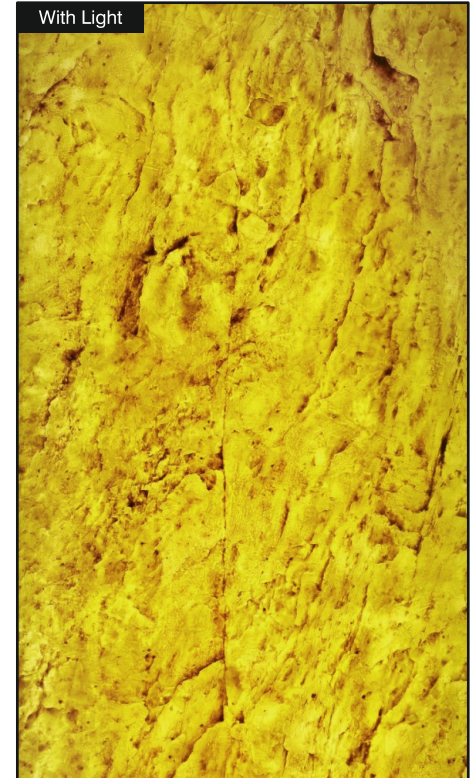
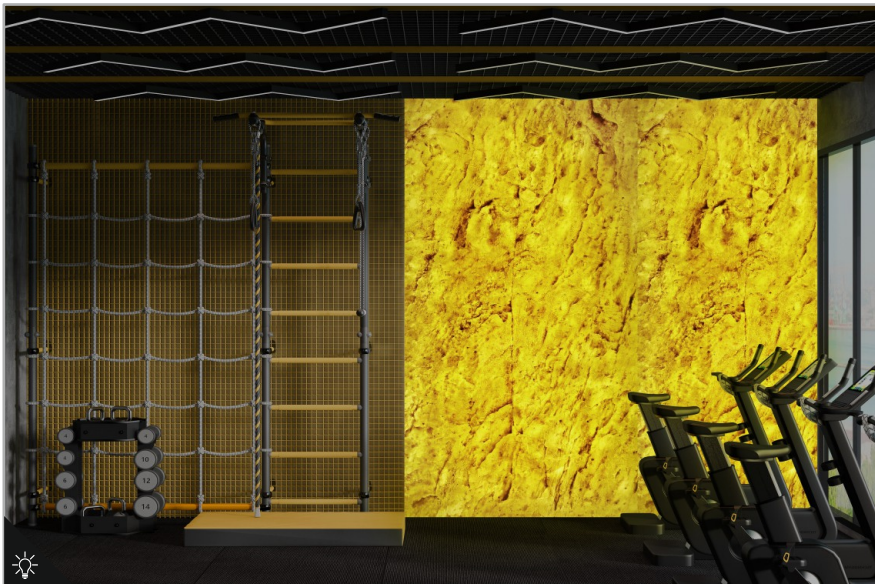
PS-105

Size:
4' x 8' (1220mm x 2440mm)
(+/- 5mm)

Thickness:
Approx 4mm

- Natural Feel
- Stone Cladding
- Rustic Surface

Gym



PS-201

Size:
4' x 8' (1220mm x 2440mm)
(+/- 5mm)

Thickness:
Approx 4mm

- Natural Feel
- Stone Cladding
- Rustic Surface

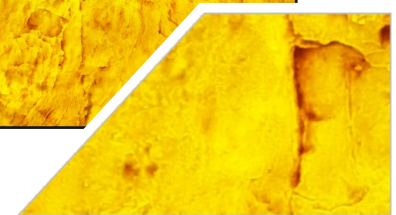
Gym



Without Light



With Light



PS-202

Size:
4' x 8' (1220mm x 2440mm)
(+/- 5mm)

Thickness:
Approx 4mm

- Natural Feel
- Stone Cladding
- Rustic Surface

Spa



Without Light



With Light



PS-203



Size:
4' x 8' (1220mm x 2440mm)
(+/- 5mm)

Thickness:
Approx 4mm

- Natural Feel
- Stone Cladding
- Rustic Surface



Bathroom



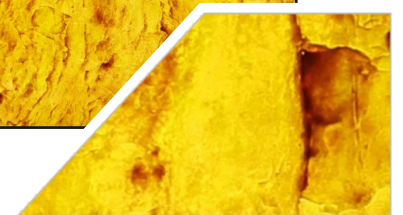
PS-204

Size:
4' x 8' (1220mm x 2440mm)
(+/- 5mm)

Thickness:
Approx 4mm

- Natural Feel
- Stone Cladding
- Rustic Surface

Kitchen



PS-205

Size:
4' x 8' (1220mm x 2440mm)
(+/- 5mm)

Thickness:
Approx 4mm

- Natural Feel
- Stone Cladding
- Rustic Surface

Pooja Room



Without Light



With Light



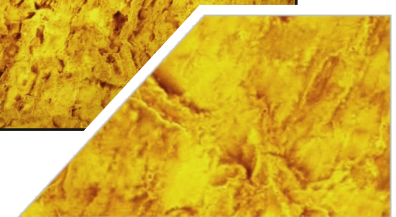
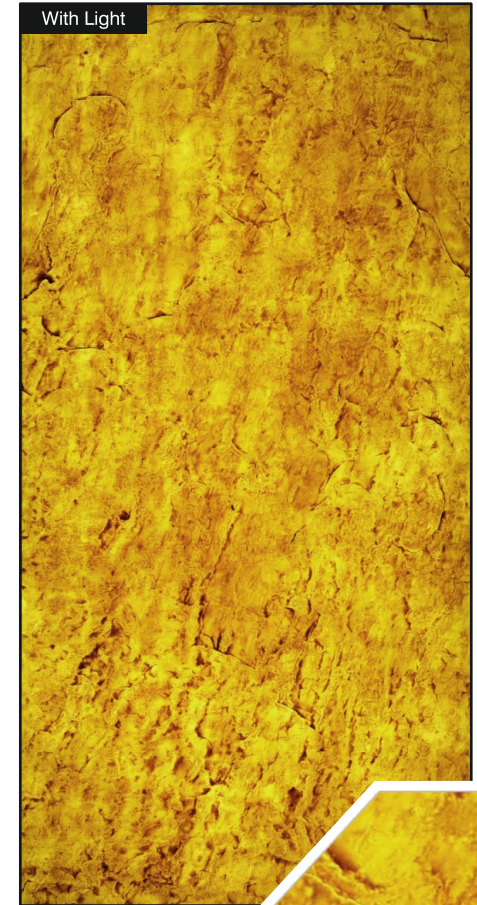
PS-206

Size:
4' x 8' (1220mm x 2440mm)
(+/- 5mm)

Thickness:
Approx 4mm

- Natural Feel
- Stone Cladding
- Rustic Surface

Entry Gate



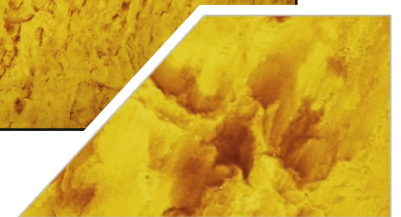
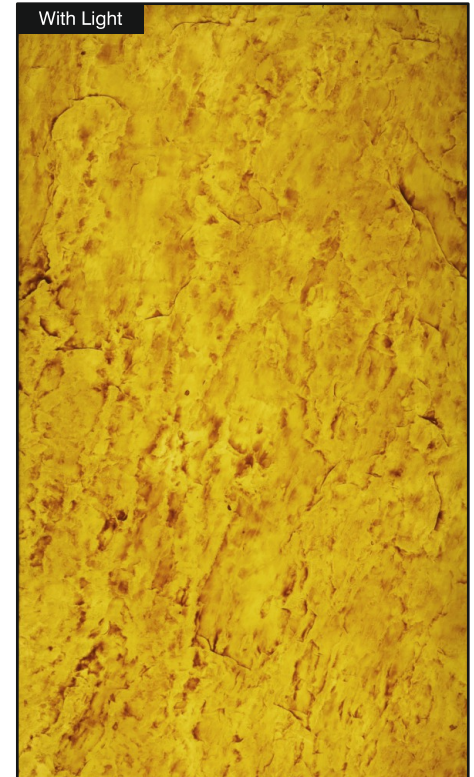
PS-301

Size:
4' x 8' (1220mm x 2440mm)
(+/- 5mm)

Thickness:
Approx 4mm

- Natural Feel
- Stone Cladding
- Rustic Surface

Desk



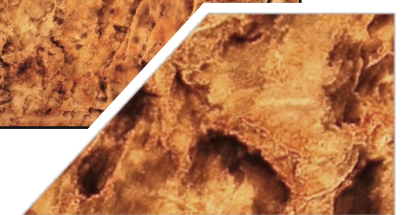
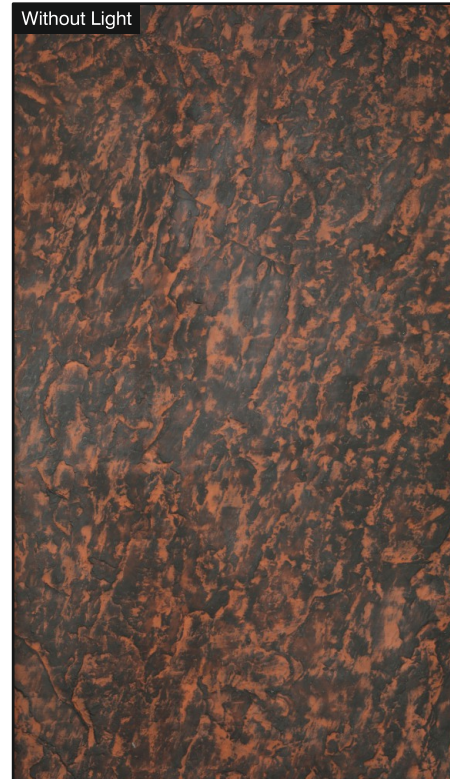
PS-302

Size:
4' x 8' (1220mm x 2440mm)
(+/- 5mm)

Thickness:
Approx 4mm

- Natural Feel
- Stone Cladding
- Rustic Surface

Dressing Area



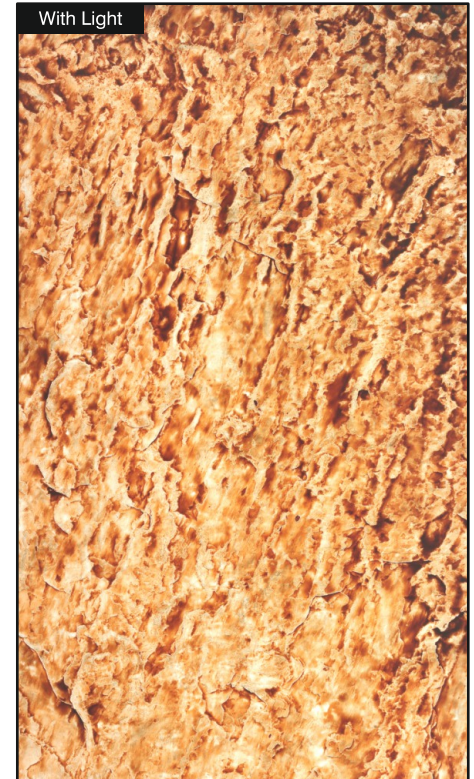
PS-303

Size:
4' x 8' (1220mm x 2440mm)
(+/- 5mm)

Thickness:
Approx 4mm

- Natural Feel
- Stone Cladding
- Rustic Surface

Hotel



PS-304

Size:
4' x 8' (1220mm x 2440mm)
(+/- 5mm)

Thickness:
Approx 4mm

- Natural Feel
- Stone Cladding
- Rustic Surface

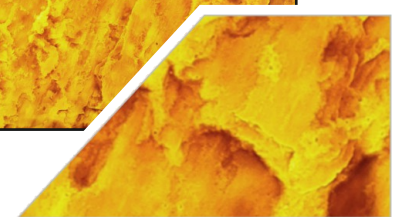
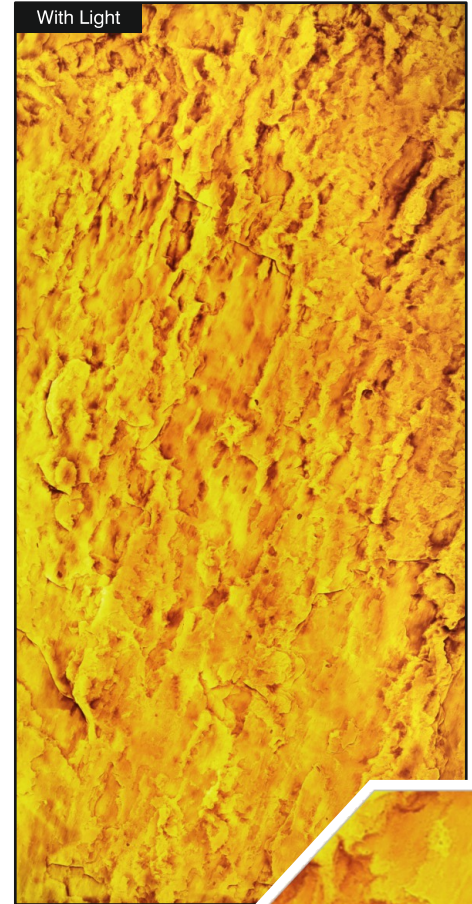
Bathroom



Without Light



With Light



PS-305

Size:
4' x 8' (1220mm x 2440mm)
(+/- 5mm)

Thickness:
Approx 4mm

- Natural Feel
- Stone Cladding
- Rustic Surface

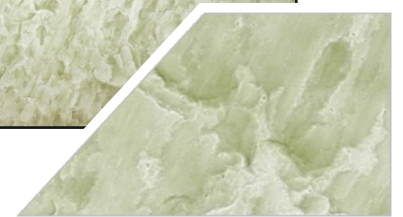
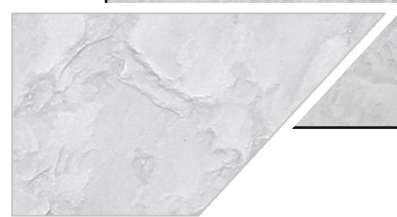
Pooja Room



Without Light



With Light



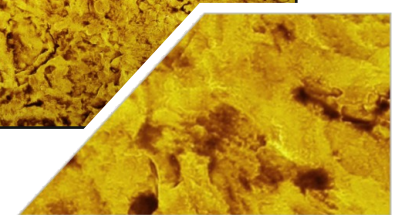
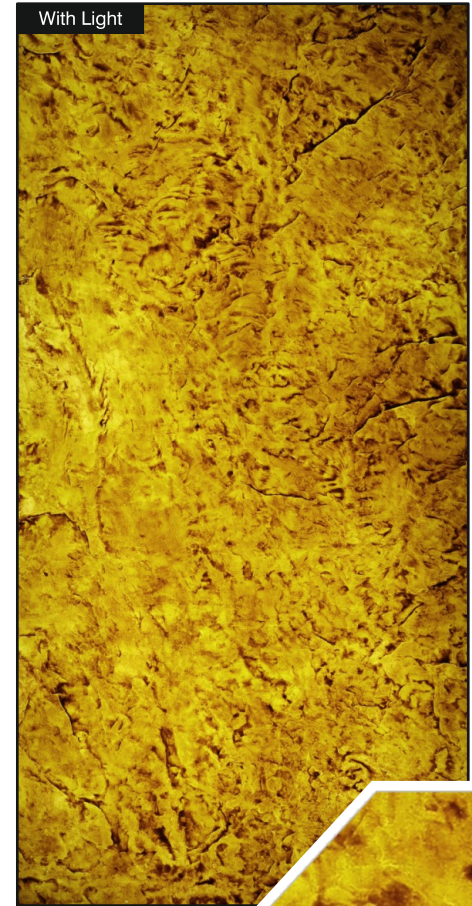
PS-306

Size:
4' x 8' (1220mm x 2440mm)
(+/- 5mm)

Thickness:
Approx 4mm

- Natural Feel
- Stone Cladding
- Rustic Surface

Living Room



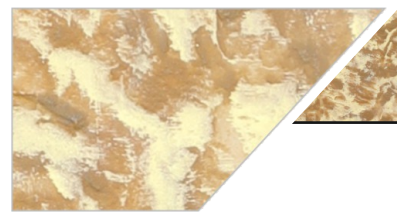
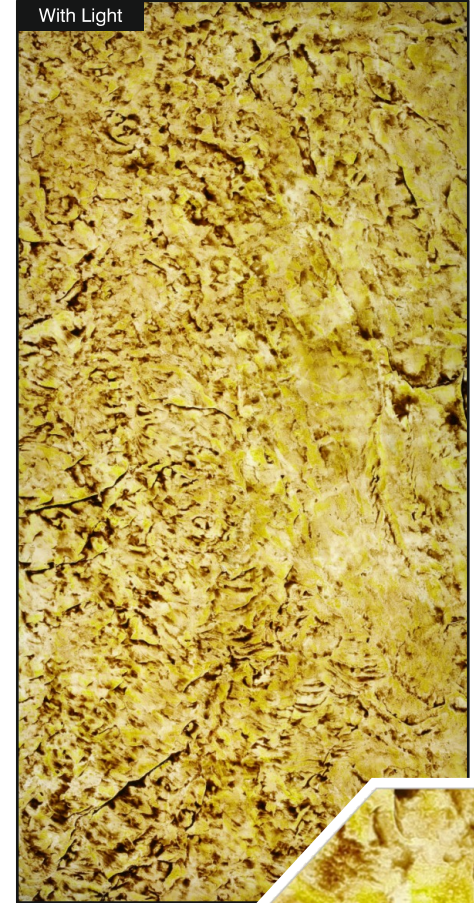
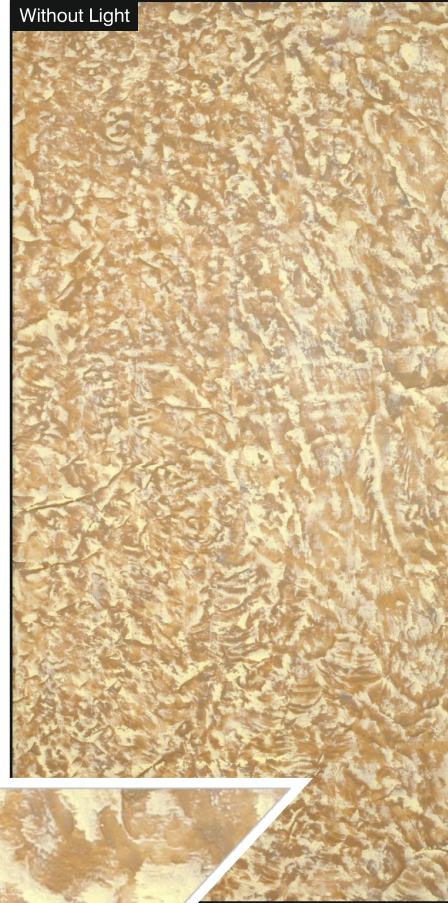
PS-401

Size:
4' x 8' (1220mm x 2440mm)
(+/- 5mm)

Thickness:
Approx 4mm

- Natural Feel
- Stone Cladding
- Rustic Surface

Reception Backdrop



PS-402

Size:
4' x 8' (1220mm x 2440mm)
(+/- 5mm)

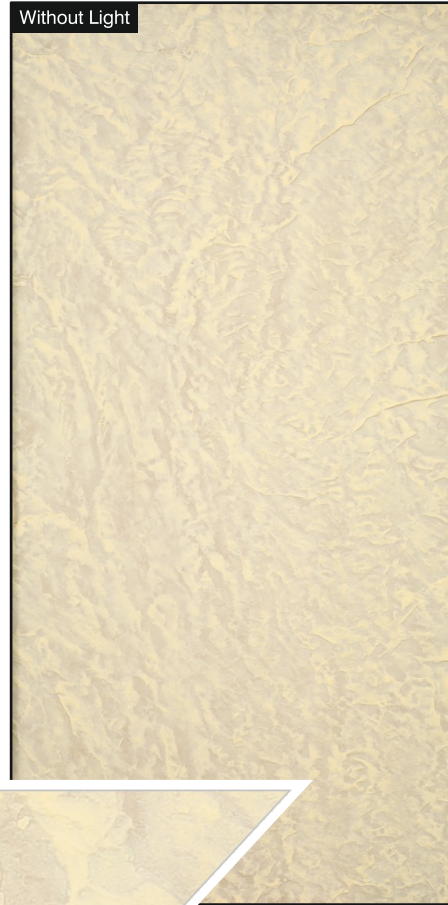
Thickness:
Approx 4mm

- Natural Feel
- Stone Cladding
- Rustic Surface

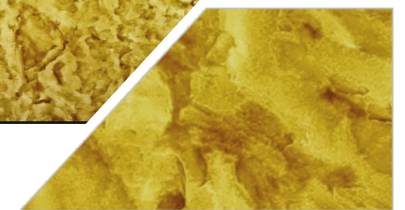
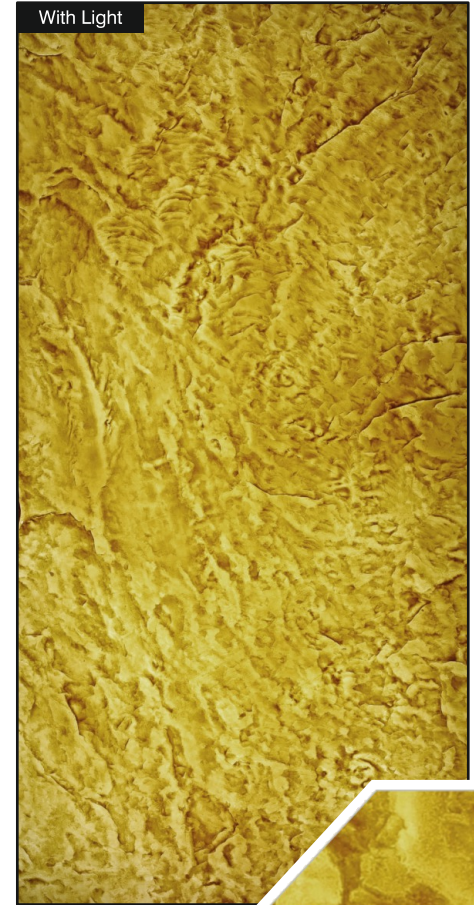
Bedroom



Without Light



With Light



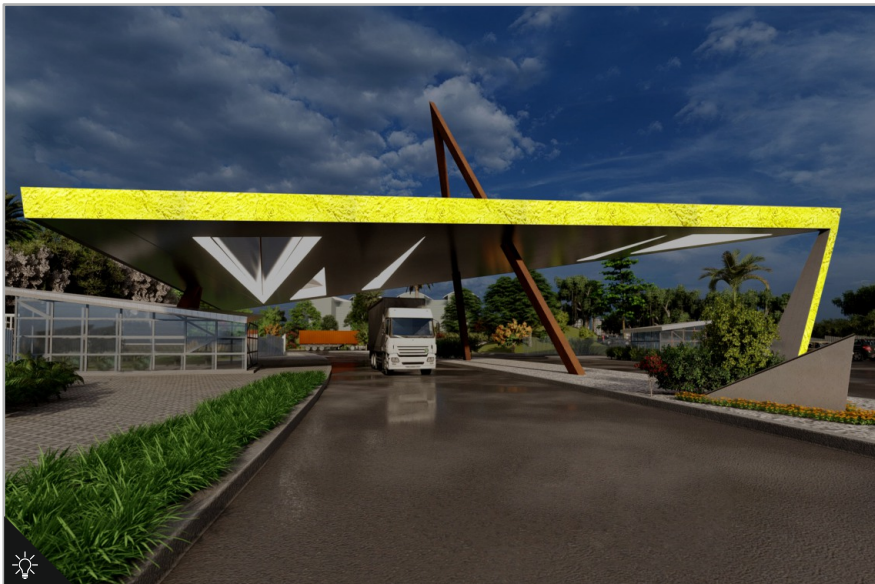
PS-403

Size:
4' x 8' (1220mm x 2440mm)
(+/- 5mm)

Thickness:
Approx 4mm

- Natural Feel
- Stone Cladding
- Rustic Surface

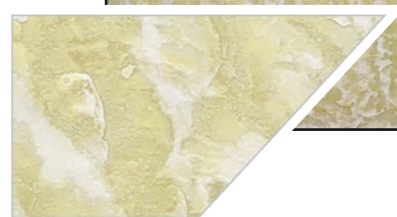
Entry Gate



Without Light



With Light



PS-404

Size:
4' x 8' (1220mm x 2440mm)
(+/- 5mm)

Thickness:
Approx 4mm

- Natural Feel
- Stone Cladding
- Rustic Surface

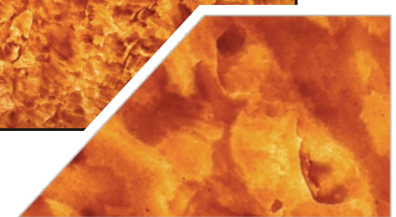
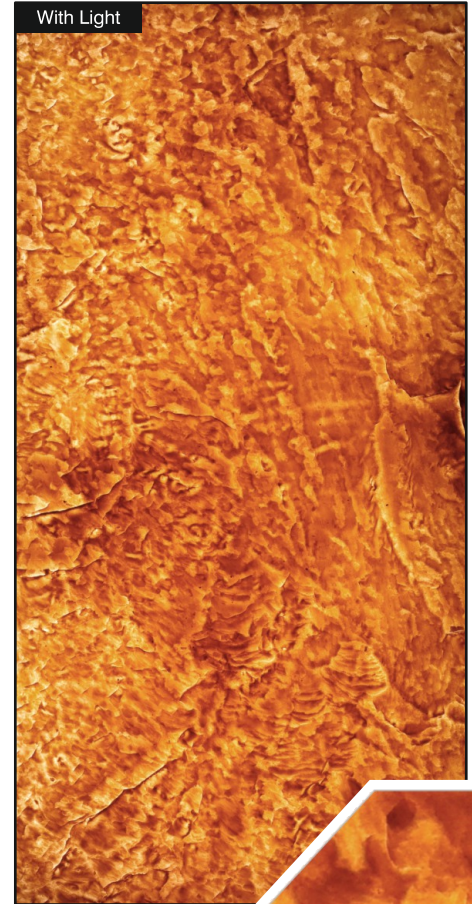
Exterior wall



Without Light



With Light



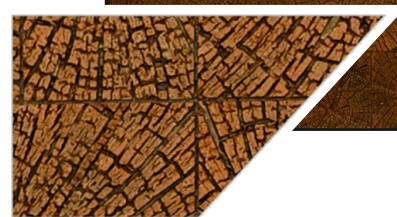
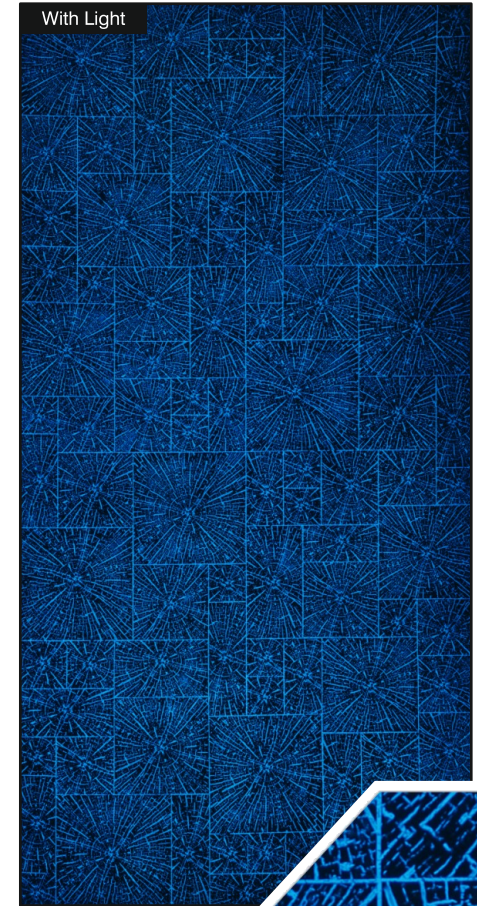
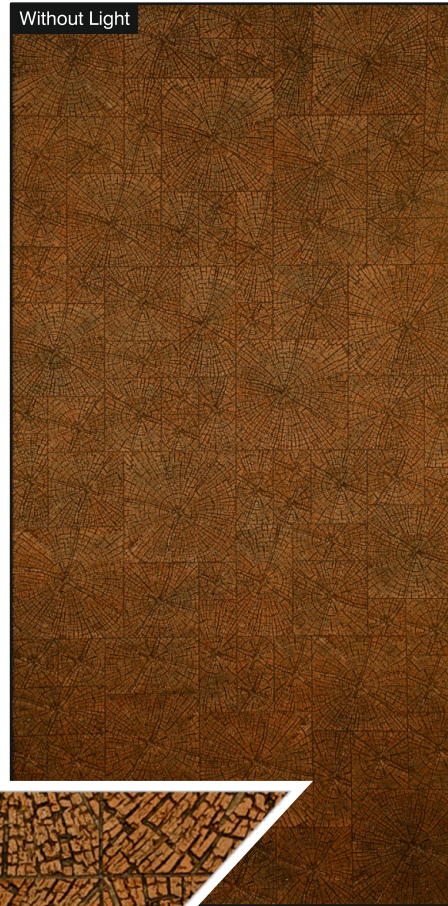
PS-405

Size:
4' x 8' (1220mm x 2440mm)
(+/- 5mm)

Thickness:
Approx 4mm

- Natural Feel
- Stone Cladding
- Rustic Surface

Living Room



PW-101

Size:
4' x 8' (1220mm x 2440mm)
(+/- 5mm)

Thickness:
Approx 4mm

- Natural Feel
- Stone Cladding
- Rustic Surface

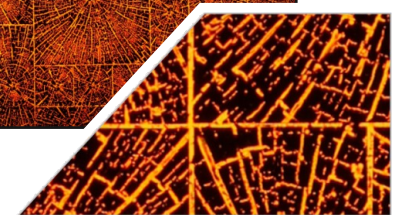
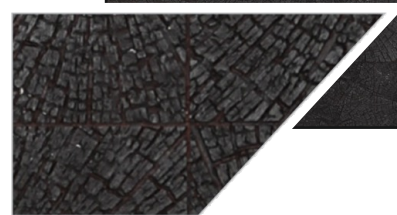
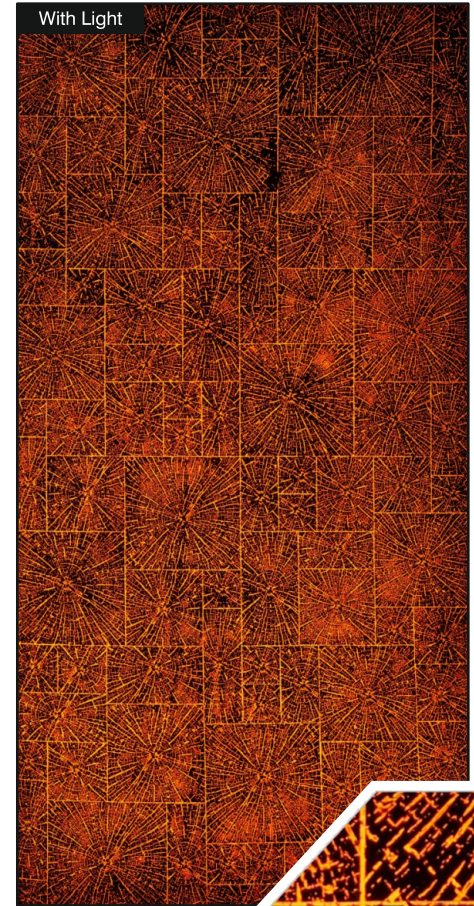
Drawing Room



Without Light



With Light



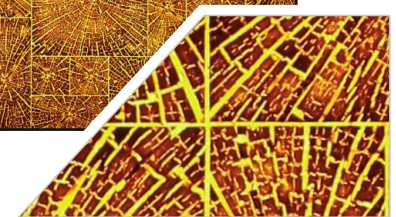
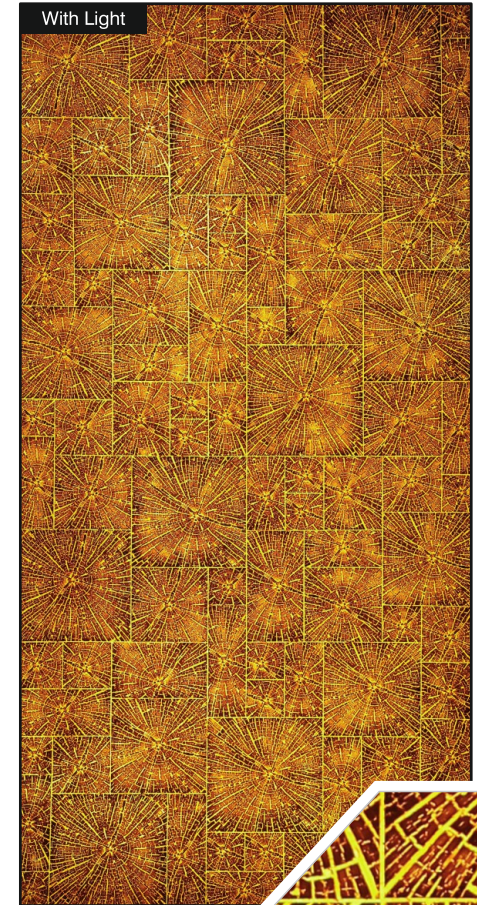
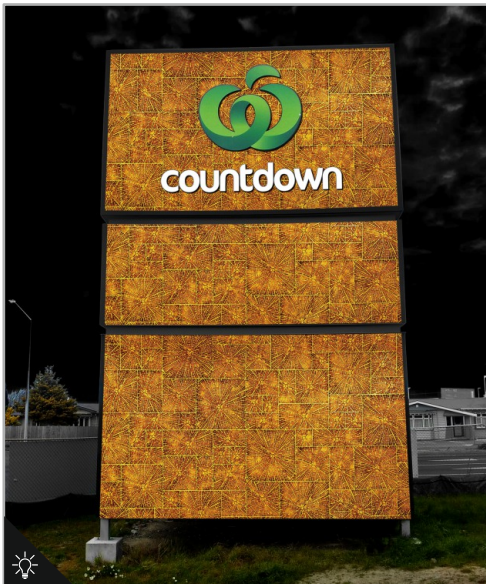
PW-102

Size:
4' x 8' (1220mm x 2440mm)
(+/- 5mm)

Thickness:
Approx 4mm

- Natural Feel
- Stone Cladding
- Rustic Surface

Pylon Signage



PW-103

Size:
4' x 8' (1220mm x 2440mm)
(+/- 5mm)

Thickness:
Approx 4mm

- Natural Feel
- Stone Cladding
- Rustic Surface

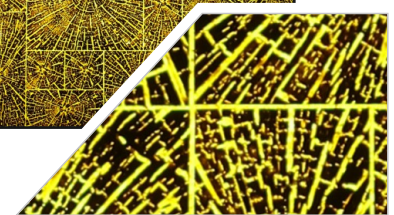
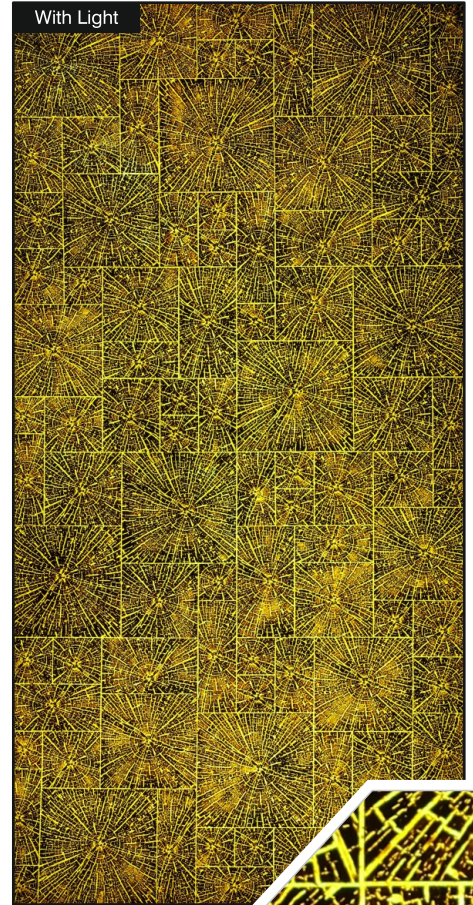
Resort



Without Light



With Light



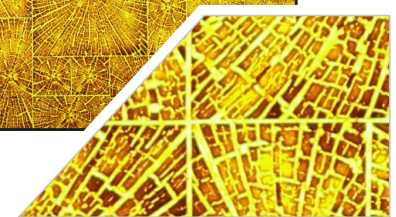
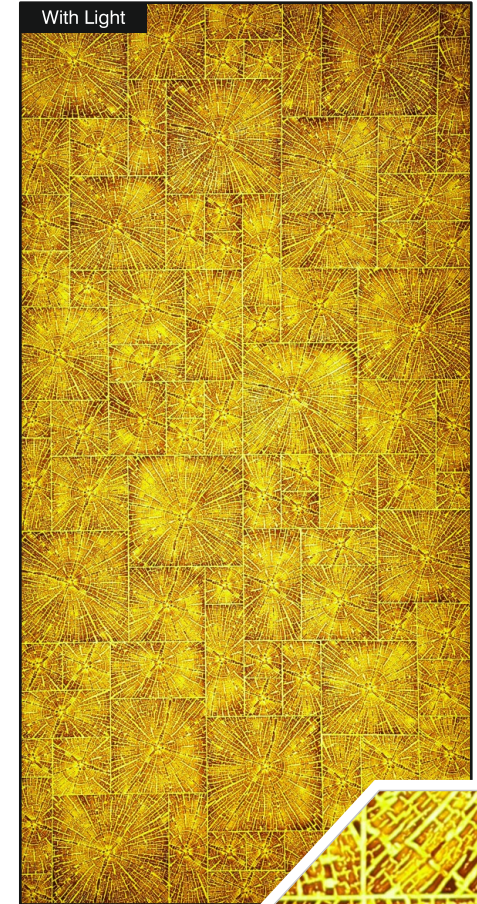
PW-104

Size:
4' x 8' (1220mm x 2440mm)
(+/- 5mm)

Thickness:
Approx 4mm

- Natural Feel
- Stone Cladding
- Rustic Surface

Drawing Room



PW-105

Size:
4' x 8' (1220mm x 2440mm)
(+/- 5mm)

Thickness:
Approx 4mm

- Natural Feel
- Stone Cladding
- Rustic Surface

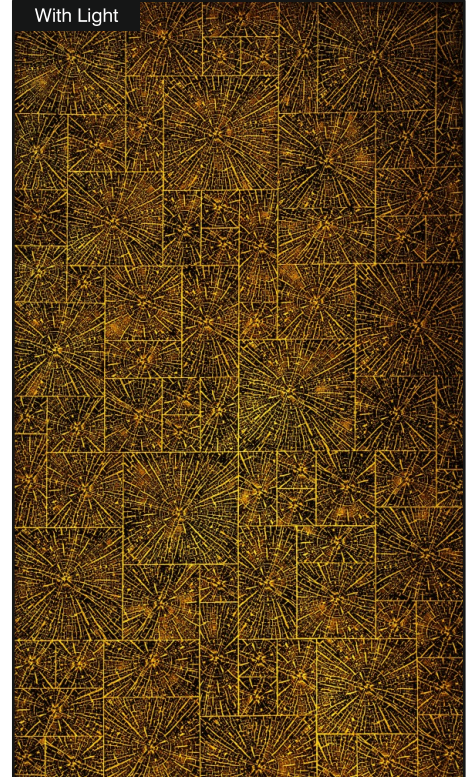
Cabinet



Without Light



With Light



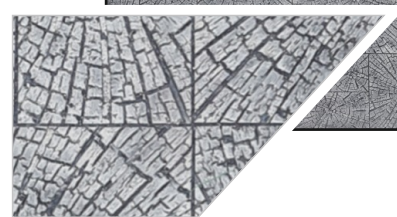
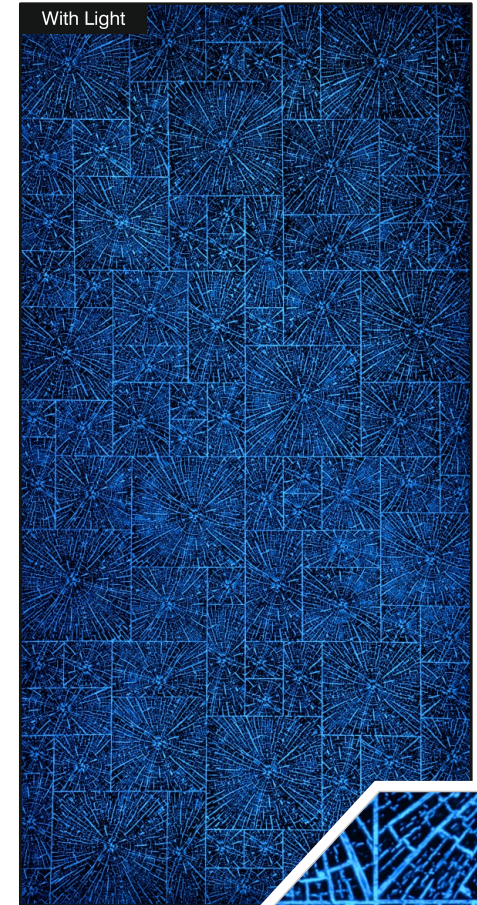
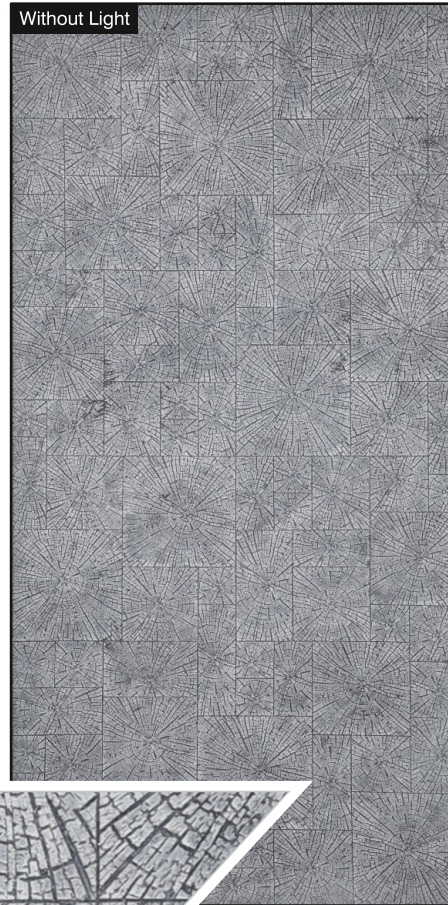
PW-106

Size:
4' x 8' (1220mm x 2440mm)
(+/- 5mm)

Thickness:
Approx 4mm

- Natural Feel
- Stone Cladding
- Rustic Surface

Bedroom



PW-107

Size:
4' x 8' (1220mm x 2440mm)
(+/- 5mm)

Thickness:
Approx 4mm

- Natural Feel
- Stone Cladding
- Rustic Surface

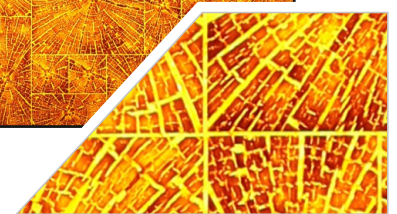
Meeting Area



Without Light



With Light



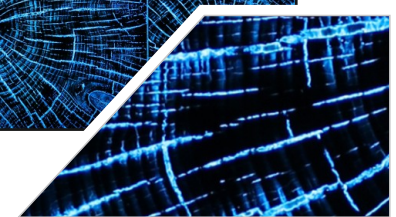
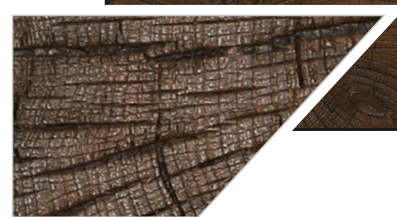
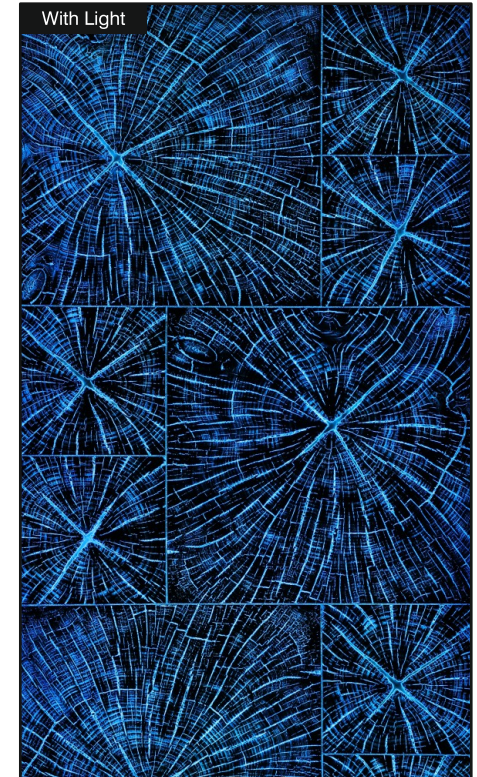
PW-108

Size:
4' x 8' (1220mm x 2440mm)
(+/- 5mm)

Thickness:
Approx 4mm

- Natural Feel
- Stone Cladding
- Rustic Surface

Hotel



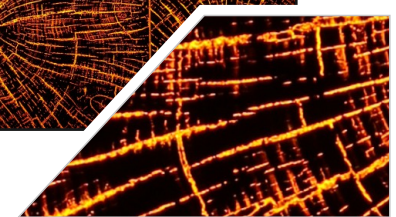
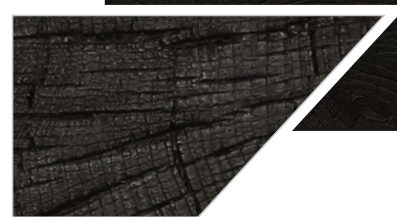
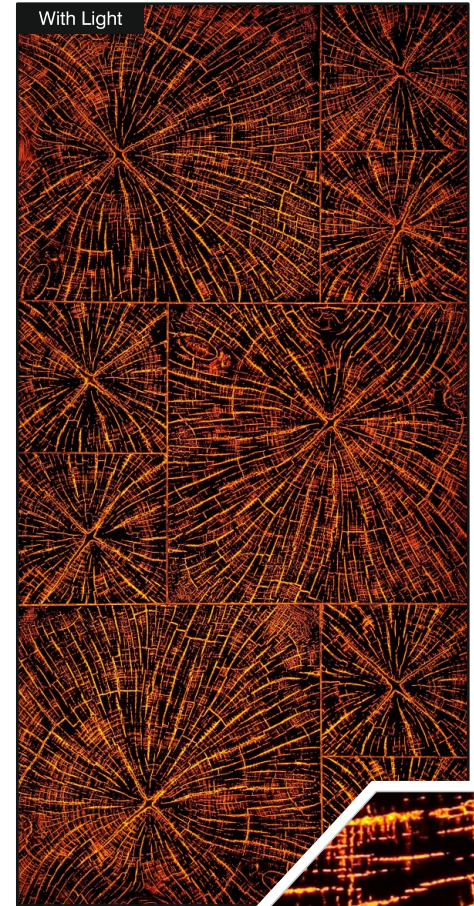
PW-201

Size:
4' x 8' (1220mm x 2440mm)
(+/- 5mm)

Thickness:
Approx 4mm

- Natural Feel
- Stone Cladding
- Rustic Surface

Club House



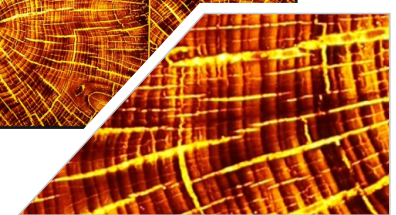
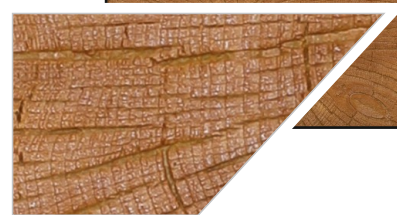
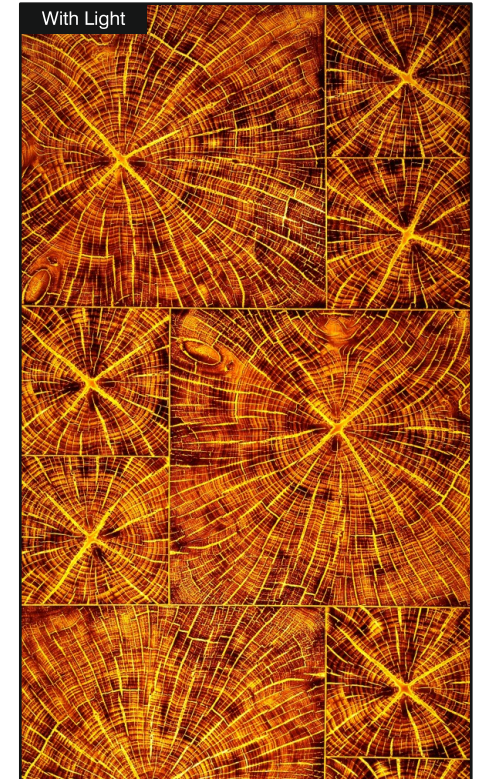
PW-202

Size:
4' x 8' (1220mm x 2440mm)
(+/- 5mm)

Thickness:
Approx 4mm

- Natural Feel
- Stone Cladding
- Rustic Surface

Corridor



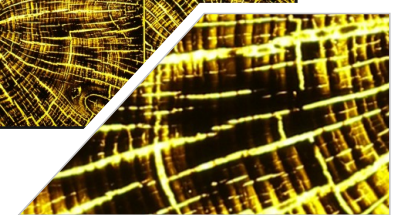
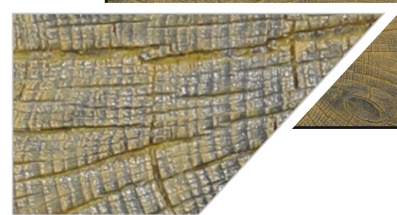
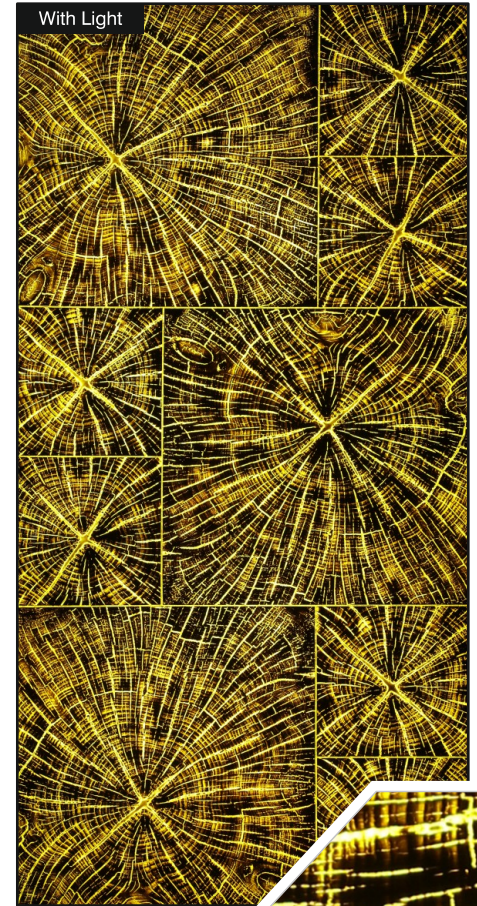
PW-203

Size:
4' x 8' (1220mm x 2440mm)
(+/- 5mm)

Thickness:
Approx 4mm

- Natural Feel
- Stone Cladding
- Rustic Surface

Showroom



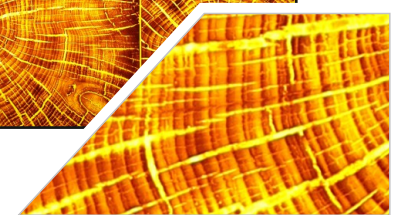
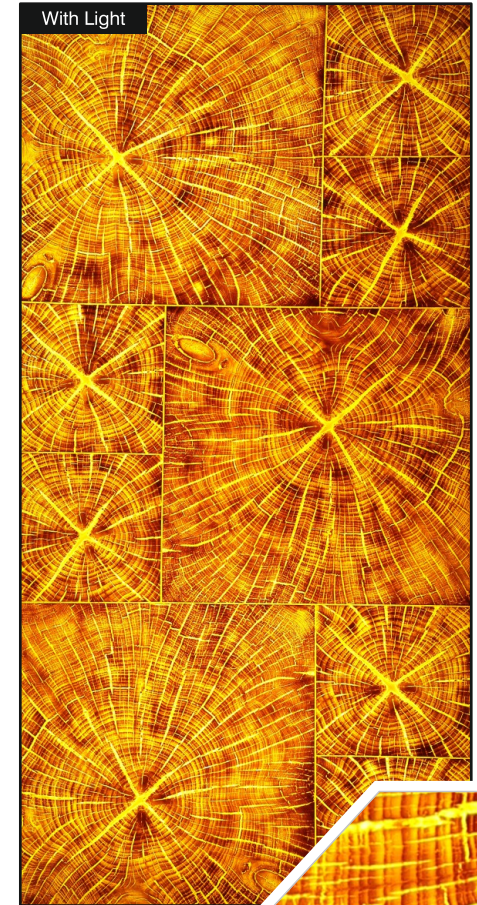
PW-204

Size:
4' x 8' (1220mm x 2440mm)
(+/- 5mm)

Thickness:
Approx 4mm

- Natural Feel
- Stone Cladding
- Rustic Surface

Bathroom



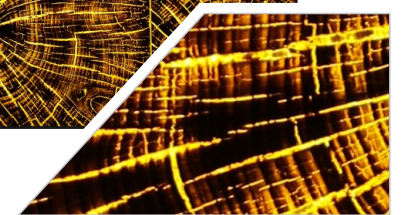
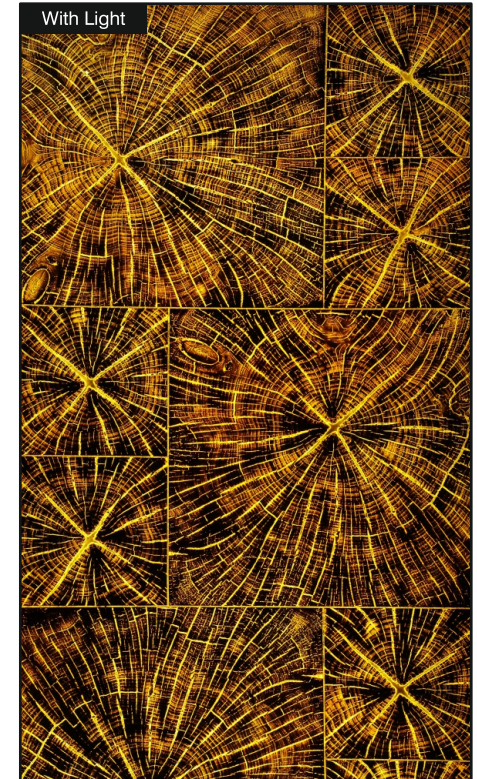
PW-205

Size:
4' x 8' (1220mm x 2440mm)
(+/- 5mm)

Thickness:
Approx 4mm

- Natural Feel
- Stone Cladding
- Rustic Surface

Partition



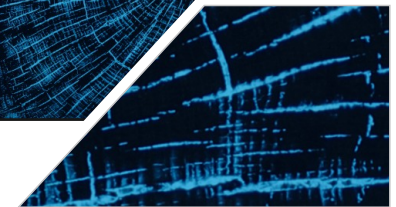
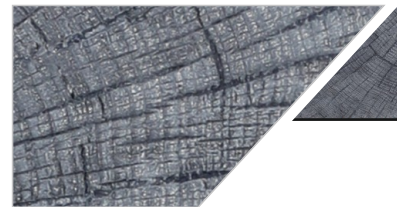
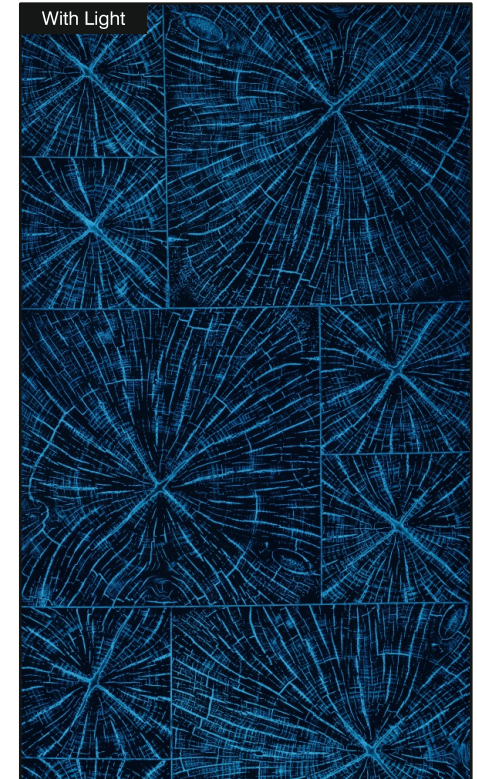
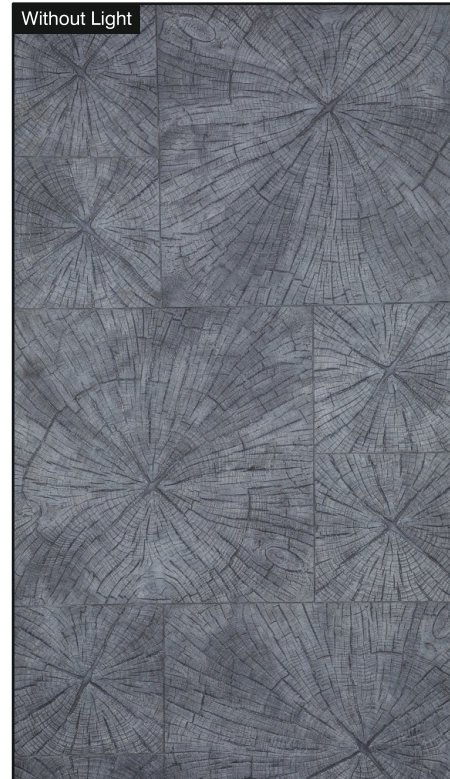
PW-206

Size:
4' x 8' (1220mm x 2440mm)
(+/- 5mm)

Thickness:
Approx 4mm

- Natural Feel
- Stone Cladding
- Rustic Surface

Column



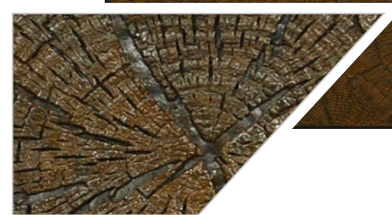
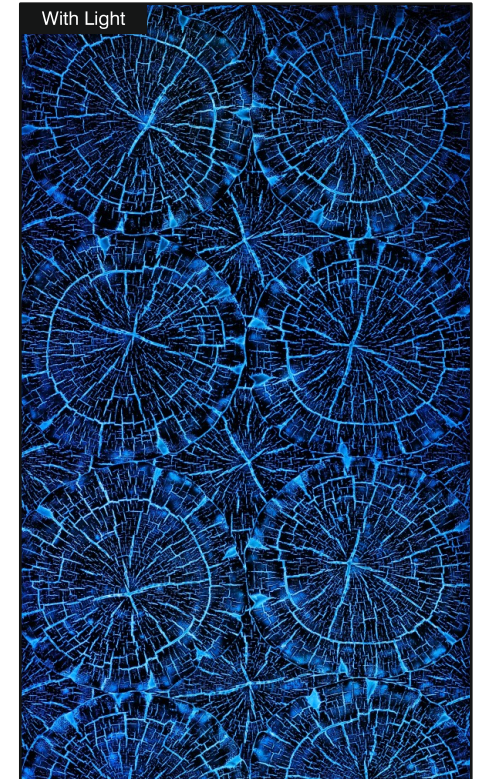
PW-207

Size:
4' x 8' (1220mm x 2440mm)
(+/- 5mm)

Thickness:
Approx 4mm

- Natural Feel
- Stone Cladding
- Rustic Surface

Partition



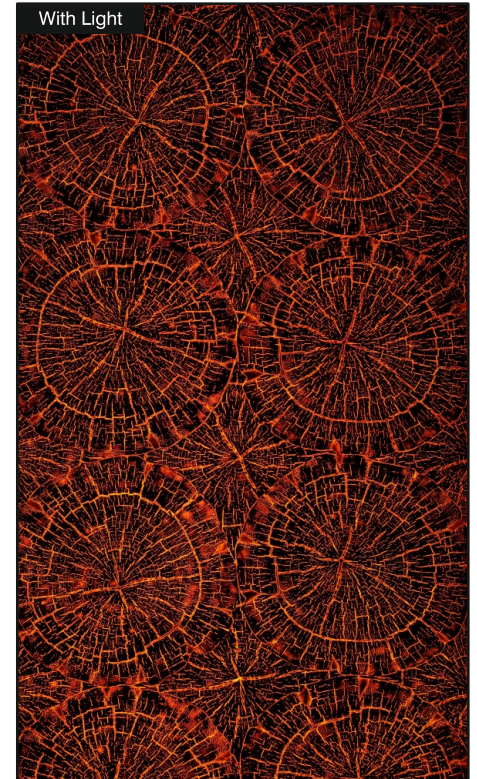
PW-301

Size:
4' x 8' (1220mm x 2440mm)
(+/- 5mm)

Thickness:
Approx 4mm

- Natural Feel
- Stone Cladding
- Rustic Surface

Spa



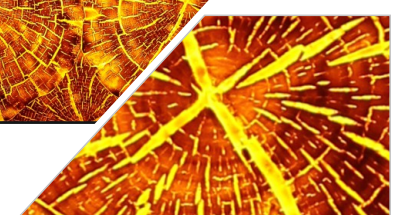
PW-302

Size:
4' x 8' (1220mm x 2440mm)
(+/- 5mm)

Thickness:
Approx 4mm

- Natural Feel
- Stone Cladding
- Rustic Surface

Lobby



PW-303

Size:
4' x 8' (1220mm x 2440mm)
(+/- 5mm)

Thickness:
Approx 4mm

- Natural Feel
- Stone Cladding
- Rustic Surface



Bridge



PW-304

Size:
4' x 8' (1220mm x 2440mm)
(+/- 5mm)

Thickness:
Approx 4mm

- Natural Feel
- Stone Cladding
- Rustic Surface



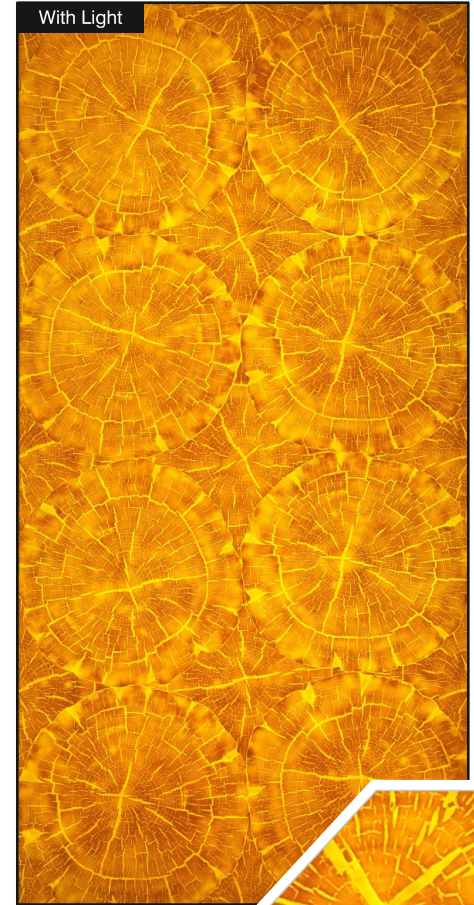
Office



Without Light



With Light



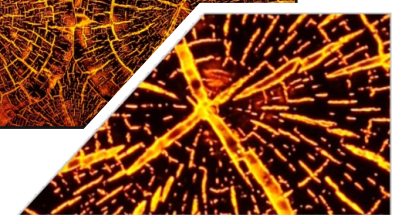
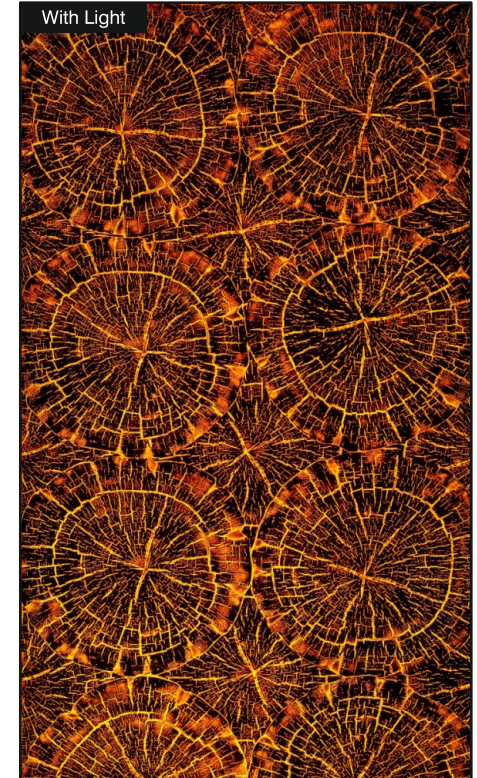
PW-305

Size:
4' x 8' (1220mm x 2440mm)
(+/- 5mm)

Thickness:
Approx 4mm

- Natural Feel
- Stone Cladding
- Rustic Surface

Swimming Pool



PW-306

Size:
4' x 8' (1220mm x 2440mm)
(+/- 5mm)

Thickness:
Approx 4mm

- Natural Feel
- Stone Cladding
- Rustic Surface

Restaurant



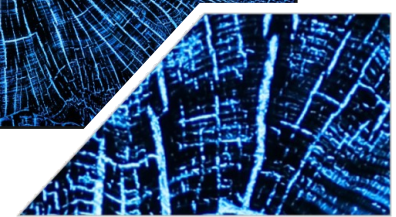
PW-307

Size:
4' x 8' (1220mm x 2440mm)
(+/- 5mm)

Thickness:
Approx 4mm

- Natural Feel
- Stone Cladding
- Rustic Surface

Office



PW-401

Size:
4' x 8' (1220mm x 2440mm)
(+/- 5mm)

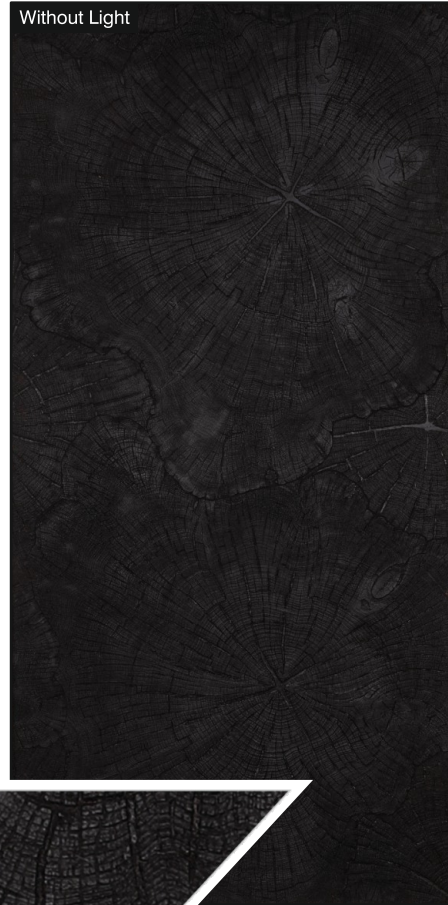
Thickness:
Approx 4mm

- Natural Feel
- Stone Cladding
- Rustic Surface

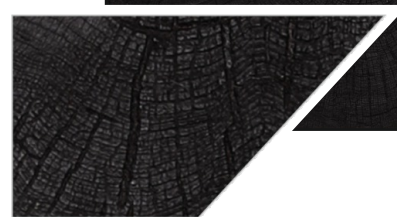
Hotel



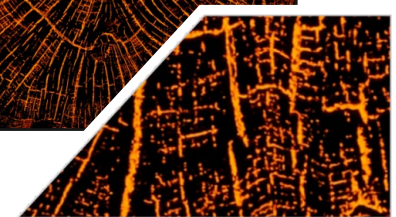
Without Light



With Light



PW-402

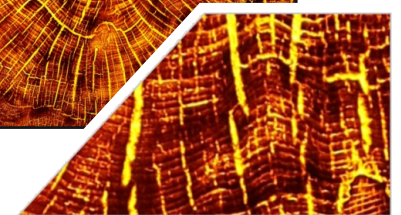


Size:
4' x 8' (1220mm x 2440mm)
(+/- 5mm)

Thickness:
Approx 4mm

- Natural Feel
- Stone Cladding
- Rustic Surface

Fire Place



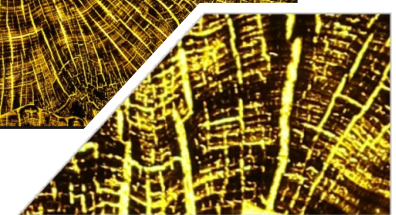
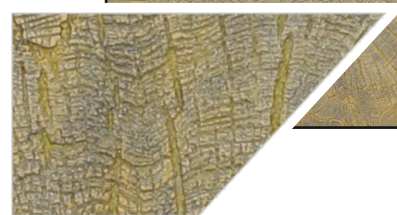
PW-403

Size:
4' x 8' (1220mm x 2440mm)
(+/- 5mm)

Thickness:
Approx 4mm

- Natural Feel
- Stone Cladding
- Rustic Surface

Reception



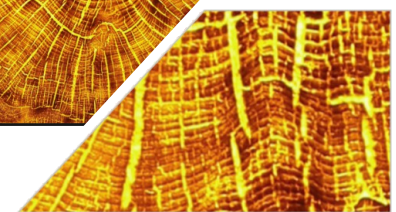
PW-404

Size:
4' x 8' (1220mm x 2440mm)
(+/- 5mm)

Thickness:
Approx 4mm

- Natural Feel
- Stone Cladding
- Rustic Surface

Banquet Hall



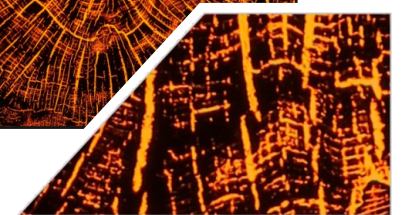
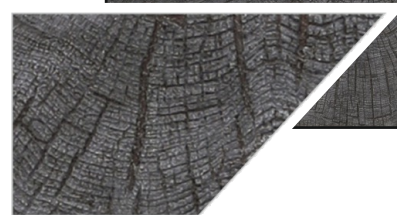
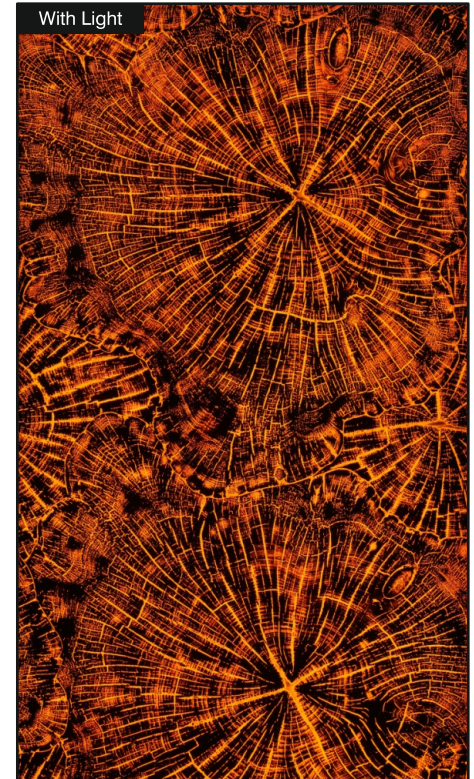
PW-405

Size:
4' x 8' (1220mm x 2440mm)
(+/- 5mm)

Thickness:
Approx 4mm

- Natural Feel
- Stone Cladding
- Rustic Surface

Lounge



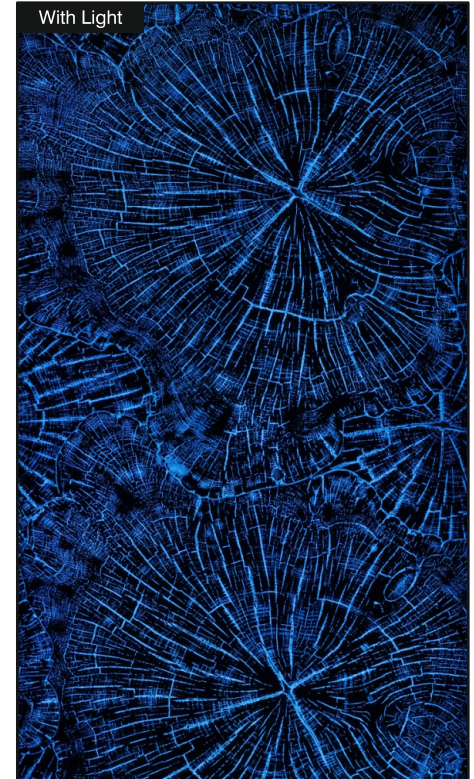
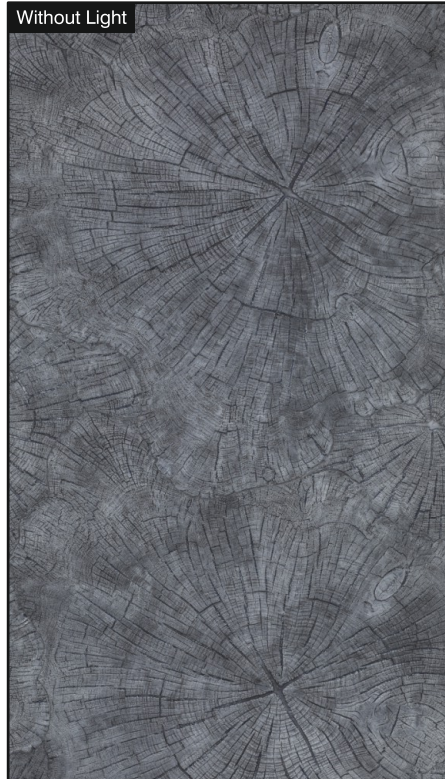
PW-406

Size:
4' x 8' (1220mm x 2440mm)
(+/- 5mm)

Thickness:
Approx 4mm

- Natural Feel
- Stone Cladding
- Rustic Surface

Reception



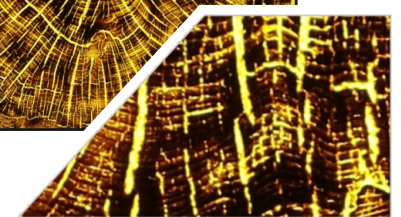
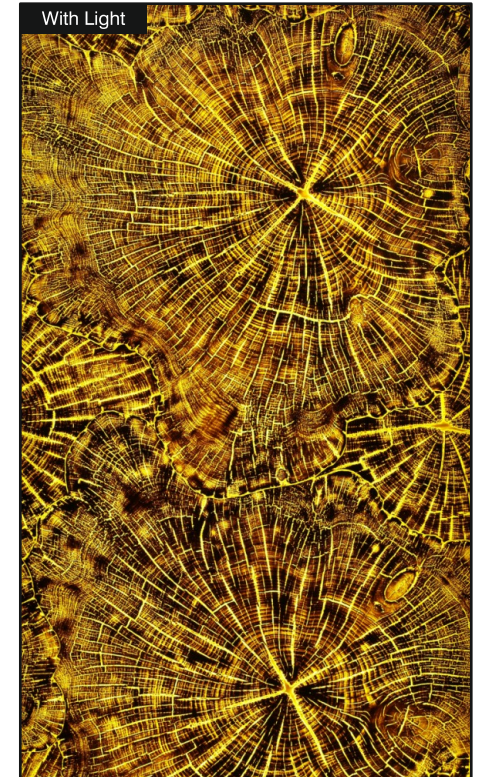
PW-407

Size:
4' x 8' (1220mm x 2440mm)
(+/- 5mm)

Thickness:
Approx 4mm

- Natural Feel
- Stone Cladding
- Rustic Surface

Salon



PW-408

Size:
4' x 8' (1220mm x 2440mm)
(+/- 5mm)

Thickness:
Approx 4mm

- Natural Feel
- Stone Cladding
- Rustic Surface



L-Patti
1.25"x1.25"
8' Length

Lighting Automation

Integrates product's aesthetics with technology can add a lot of visual interests to a space and make it feel more luxurious or sophisticated. It can add elegance and set the mood for any occasion and make it more enjoyable. It's a great way to create a more relaxing, romantic or even dramatic and inviting environment.

Integrating Lighting Automation with Back light offers following.

- LED Dimming ■ LED Tuning ■ Lighting Pattern ■ Dynamic Lighting Pattern with Music
- Customized Lighting Pattern and Scene Controller



DECONYX is made by high molecular polyester resin. It looks like a natural stone and is not as expensive as them. It is easy to operate which makes it extremely popular worldwide. The best characteristics of DECONYX is that it can transmit light and has various styles and design to choose from. It has the advantages of being bend, seamless joint process and is non breakable

Specifications of DECONYX

Standard size: 4' x 8' (Approx) AR Series: 2' x 8' (Approx)
Thickness: 4mm, 5mm, 7-8mm (Depending on Series & Pattern)

Range of application:

Decorative wall panel, bar top, table top, light-through structure, translucent walls, ceilings, bar tables, lamps, columns of commercial buildings and household decoration purpose.

Performance of Landscape stone products:

Possessing the natural texture of marbles, smoothness of ceramics and the elasticity of lumber, Deconyx Series could be processed without joints. Besides, they offer many designs to choose and are easy to clean and convenient to fix. Scientific tests verify that Deconyx series have neither radioactive pollution nor toxic side effects. So far, these environmental friendly stones have been widely applied into various kinds of decoration projects.

Process and installation of Landscape stone products:

Easy to fabricate & install. Can fabricate on the spot. Wood-cutting saw or marble-cutting saw for cutting, hand drill machine for hole-drilling, router machine for edge chamfering & bending by heat.

The Photographs just show the partial effect. Its colour, effect and veins are not absolutely the same. Please see the samples for original colour & effect to avoid confusions. All designs are random.

Colour Variations upto 5-10% is possible as per different batch of production.

Thickness: 4mm, 5mm & 7-8mm **Recommended Cutter Blade**

Recommended Glue for Joints: Resibond Clear

Araldite Clear

Silicone Clear

Recommended Glue for Pasting: Resibond

Araldite

Bondtite

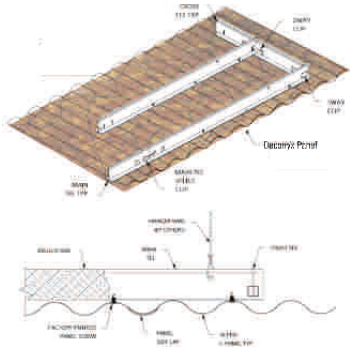


TEST RESULTS

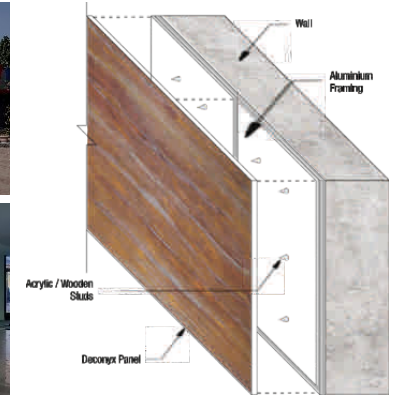
Sr. No.	Test	Test Method	Unit	Results Obtained
1	Density	ASTM D 792	gm/cc	1.36
2	Water Absorption in 24 hrs.	ASTM D 570	%	0.74
3	Tensile Strength	ASTM D 638	N/mm ²	45
4	Compressive Strength	ASTM D 695	N/mm ²	85
5	Flexural Strength	ASTM D 790	N/mm ²	92
6	Hardness	ASTM D 2583	—	40
7	Chemical Resistance 10% HCL, 10% H2SO4, 24hrs Property to be verified: Change in Appearance	ASTM D 543	—	No visible change colour, No Weight loss Observed
8	Lightfastness at exposure 100 hrs. (Xenon Arc)	ASTM G 155	—	Match with std. blue wool no. 6

Ceilings

Deconyx panels supported with wooden frame structure

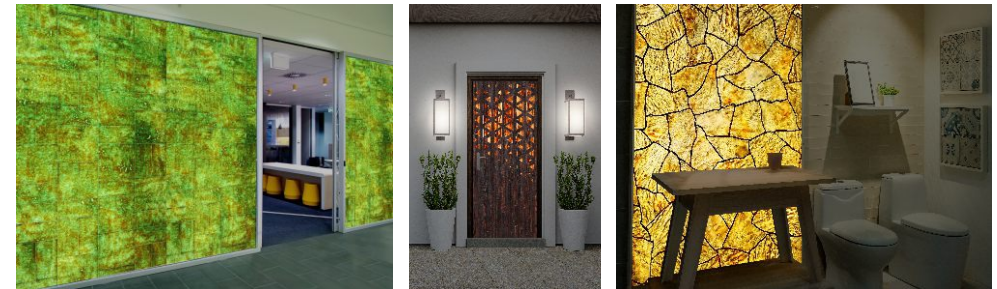


Wall Cladding / Column / Beam



Furniture

Deconyx panels can be used for direct furniture installation using silicon binder with backlit applications.



Back Light Panels

Allow backspace of 2.5 to 3 inches between the Deconyx sheet & Light panel. Amount of space behind the sheet may vary with different types of light and its application.

Note:
Slight Variations in Colours and Patterns gives natural look.
We need to accept in practically.

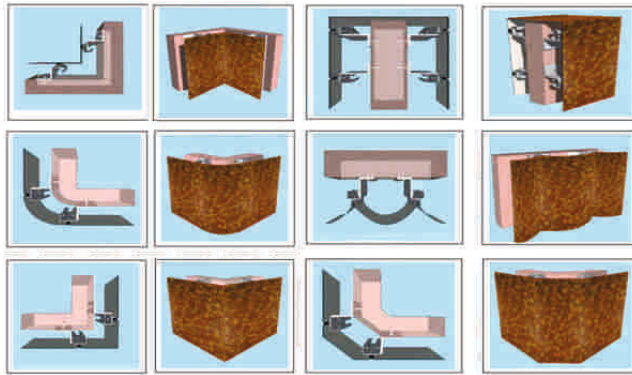
Safety Precautions & Care :

- Cut sheets in open area to avoid itching on body.
- After Cutting, Wash the sheets with water and Brush.
- Always wear Mask & Gloves while handling & installing the panels
- Keep sheets covered during any chemical application at site.
- For any kind of spot, clean with white cloth and ACETONE (Spirit).



Exterior Cladding

Exterior wall panels cladding with aluminium framing and backlit installation

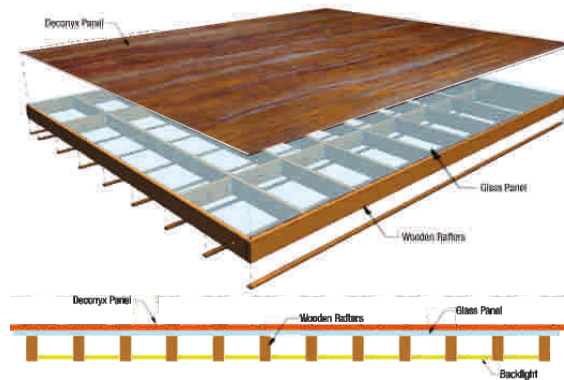


Flooring

Deconyx panels installation with silicon binding



Deconyx panels installation with wooden rafters and glass panel



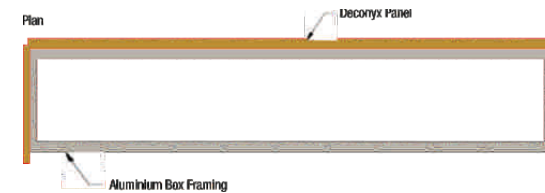
Sheet Bending Process

- Apply heat on both sides for easy bending
- Chamfering is a better and easy option for 90° attachment



Apply transparent silicone to Join both pieces.

Signage Board



- CNC engraved Deconyx panel with aluminium framing
- Backlit installation

- Installation similar to ACP panels
- Half-cut groove can be used to fold the panel with heating process

NOTE:
BEFORE IMPLYING ANY METHOD OVER SHEET MAKE SURE TO TRY IT OVER A PIECE OF THE SHEET

Installations

- Exterior
- Interior
- CNC Work / Signage

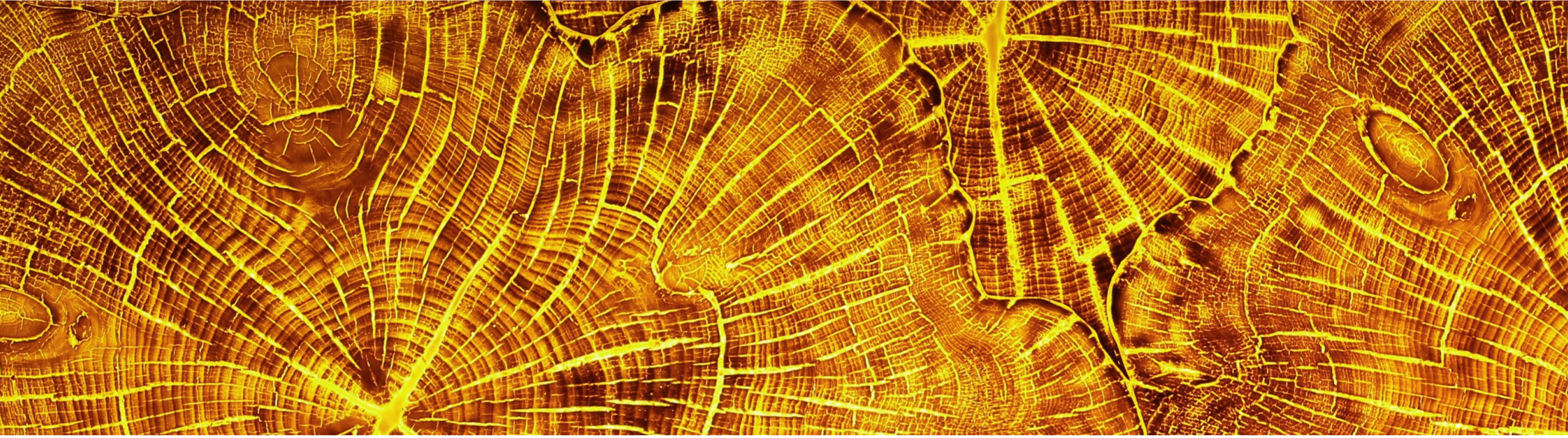


JAMNAGAR (AR-1201)

Installations

- Exterior
- Interior
- CNC Work / Signage





DECONYXTM
The Unbreakable Elegance

Corporate Office : 201, Marvella Business Hub, Opp. RTO, PAL, Surat-395010
Branch Office : 215, Stellar, Sindhu Bhavan Road, Bodakdev, Ahmedabad-380054
Phone : +91 261 2458994 / 995 / 240 2005
Mobile : +91 76210 00283 / 99740 88414 / 99740 42885
E-mail : sales@deconyx.in
Website : www.deconyx.in

 +91 76210 00283 / 383  officialdeconyx  deconyx  deconyx

