



DEC**NYX**TM
TRANSLUCENT SHINE PANELS



Index

Series	Page No.
1) Stone Series	4 - 7
2) Wooden Series	8 - 15
3) Muddy Series	16 - 17
4) Gritty Series	18 - 31
5) Special Series	32 - 33
6) CNC Series	34 - 45
7) AR Series	46 - 55
8) Brick Series	56 - 77
9) Installation Guide	79 - 80

Be Indian Buy Indian

First manufacturing unit to produce Exterior and Interior Grade, upgraded alabaster. As it is a non-breakable, used for Exteriors and Interiors, We can apply in huge quantity in any concept.

The best Characteristics of alabaster is that it can transmit light and has various styles and designs, It looks natural with good feel effect and is easy to install. It has advantage of being bent and has seamless joint property too. “Deconyx” is the only company in the world to produce exterior grade alabaster. Colourful architectural surface in Rustic finish is always the like of architects and we give our best to fulfil their needs. The elegance, design and quality really express the beauty of “Deconyx” material. Our upgraded technology and techniques offer visual perfection and easy in installation material for exterior and interior surface beautification. Transportation problem has no place in “Deconyx”.

“Deconyx” has a dream to provide unique and monopoly products. A lot of new products are in pipeline. Quality and service are both hands of “Deconyx”.

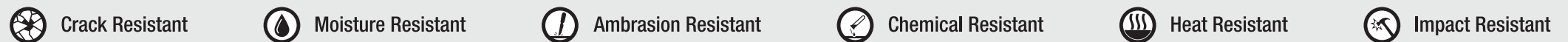
COVERING NEW ENVIRONMENTS, WITH LAST GENERATION MATERIALS BEYOND YOUR DREAMS.

Features:

- Backlit Application
- Aesthetic
- Natural Look
- Highly Chemical Resistant
- Available in many Designs
- Approx Size 8'x4' & 8'x2'
- A Versatile, Robust & Hygienic Surface.
- High Resistance to External Stress (Abrasion, Impacts, Stains etc.)
- Non Porous, Waterproof Surface.

Applications:

- Hotel
- Resort
- Restaurant
- Bar
- Cafeteria
- Club house
- Banquet hall
- Mall
- Multiplex
- Showroom
- Corporate office
- Spa
- Beauty salon
- Gazebo
- Elevator
- Residence



Bedroom



SS-101

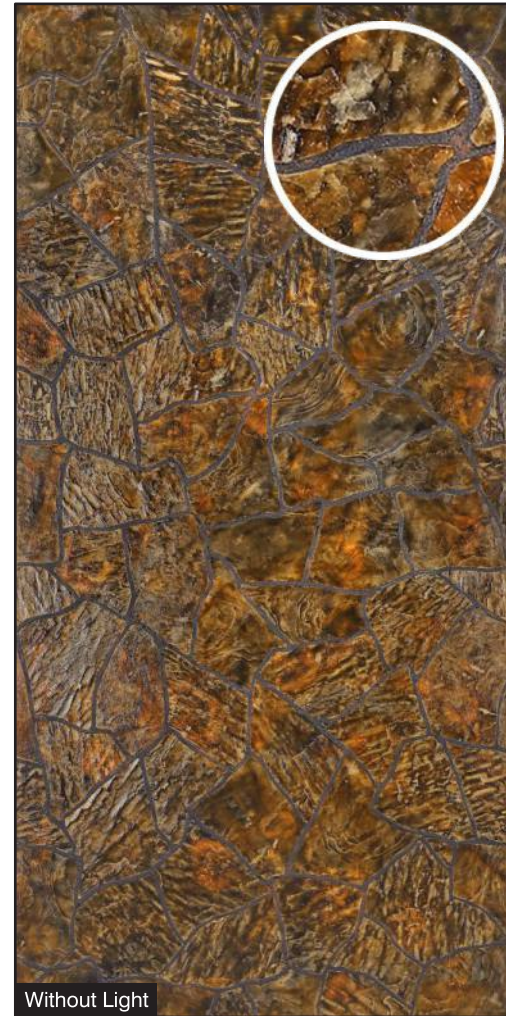
Size:
4' x 8' (1220mm x 2440mm)
(+/- 5mm)

Thickness:
Approx 4mm

- Natural Feel
- Stone Cladding
- Rustic Surface



Hotel Front Desk



Without Light



With Light

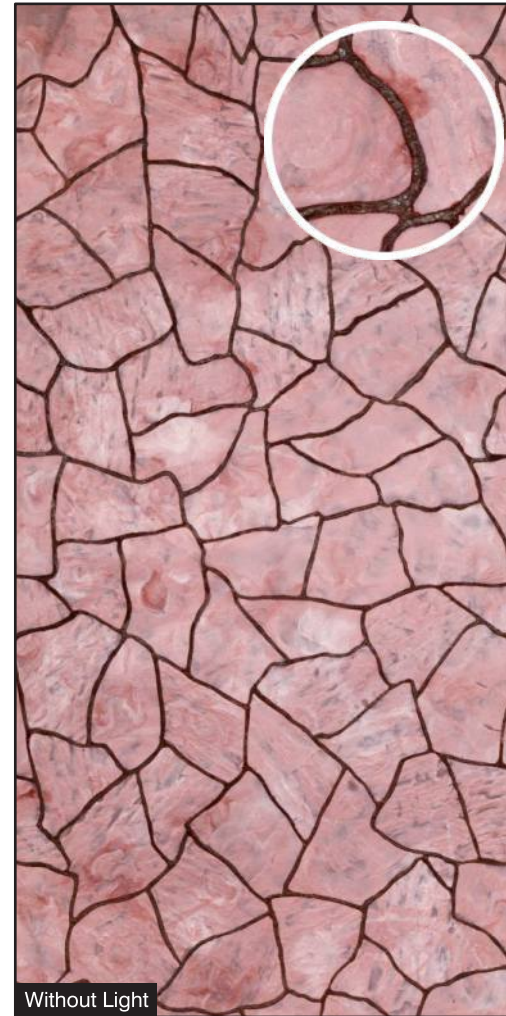
SS-102

Size:
4' x 8' (1220mm x 2440mm)
(+/- 5mm)

Thickness:
Approx 4mm

- Natural Feel
- Stone Cladding
- Rustic Surface

Gazebo



Without Light



With Light

SS-103

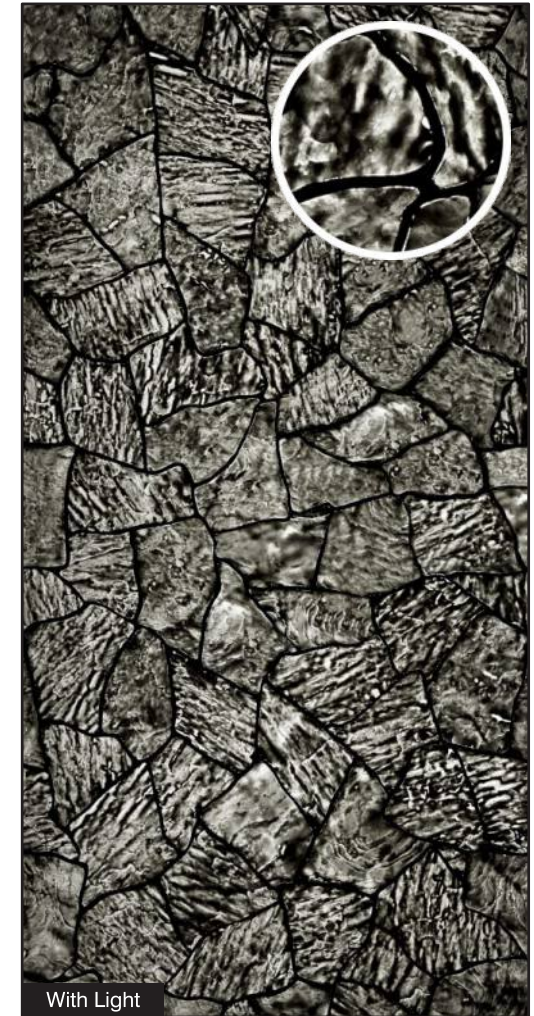
Size:
4' x 8' (1220mm x 2440mm)
(+/- 5mm)

Thickness:
Approx 4mm

- Natural Feel
- Stone Cladding
- Rustic Surface



Foyer



SS-104

Size:
4' x 8' (1220mm x 2440mm)
(+/- 5mm)

Thickness:
Approx 4mm

- Natural Feel
- Stone Cladding
- Rustic Surface

Bathroom



Without Light



With Light



WS-101

Size:
4' x 8' (1220mm x 2440mm)
(+/- 5mm)

Thickness:
Approx 4mm

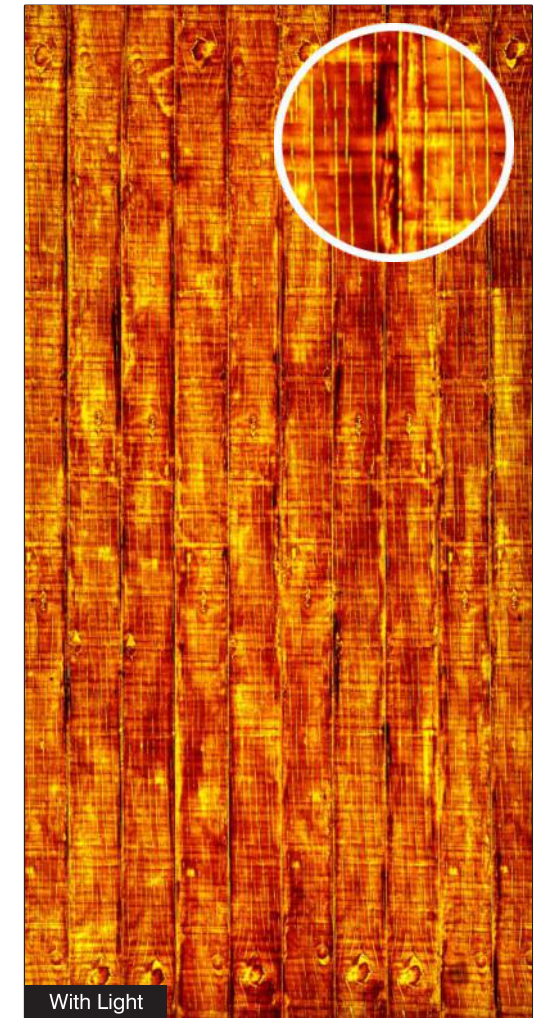
- Natural Feel
- Stone Cladding
- Rustic Surface



Gazebo



Without Light



With Light

WS-102

Size:
4' x 8' (1220mm x 2440mm)
(+/- 5mm)

Thickness:
Approx 4mm

- Natural Feel
- Stone Cladding
- Rustic Surface

TV Furniture



WS-103

Size:
4' x 8' (1220mm x 2440mm)
(+/- 5mm)

Thickness:
Approx 4mm

- Natural Feel
- Stone Cladding
- Rustic Surface

Reception

Table & Backdrop



WS-104

Size:
4' x 8' (1220mm x 2440mm)
(+/- 5mm)

Thickness:
Approx 4mm

- Natural Feel
- Stone Cladding
- Rustic Surface

Backdrop



WS-105

Size:
4' x 8' (1220mm x 2440mm)
(+/- 5mm)

Thickness:
Approx 4mm

- Natural Feel
- Stone Cladding
- Rustic Surface



Lift Lobby



WS-106

Size:
4' x 8' (1220mm x 2440mm)
(+/- 5mm)

Thickness:
Approx 4mm

- Natural Feel
- Stone Cladding
- Rustic Surface

Office Table



Without Light



With Light

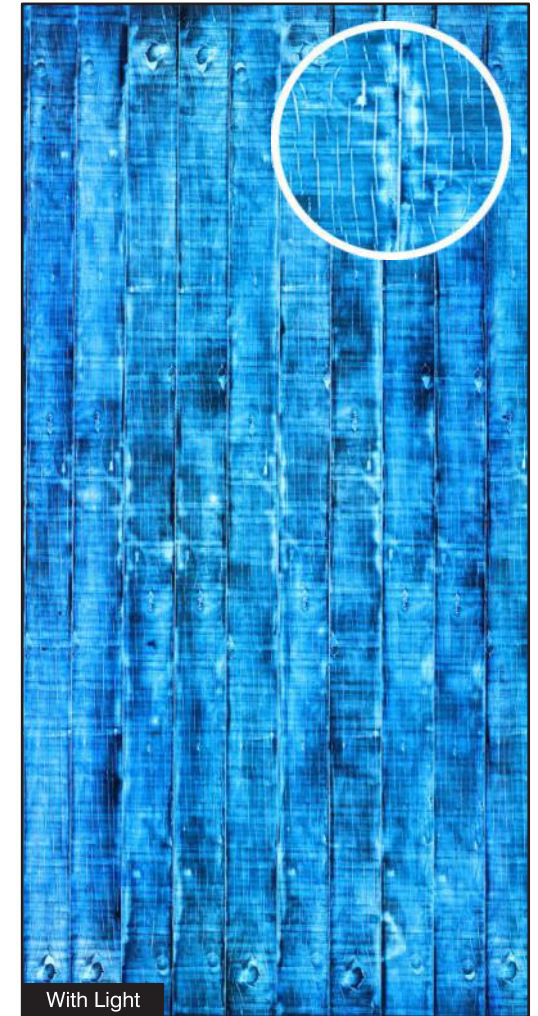
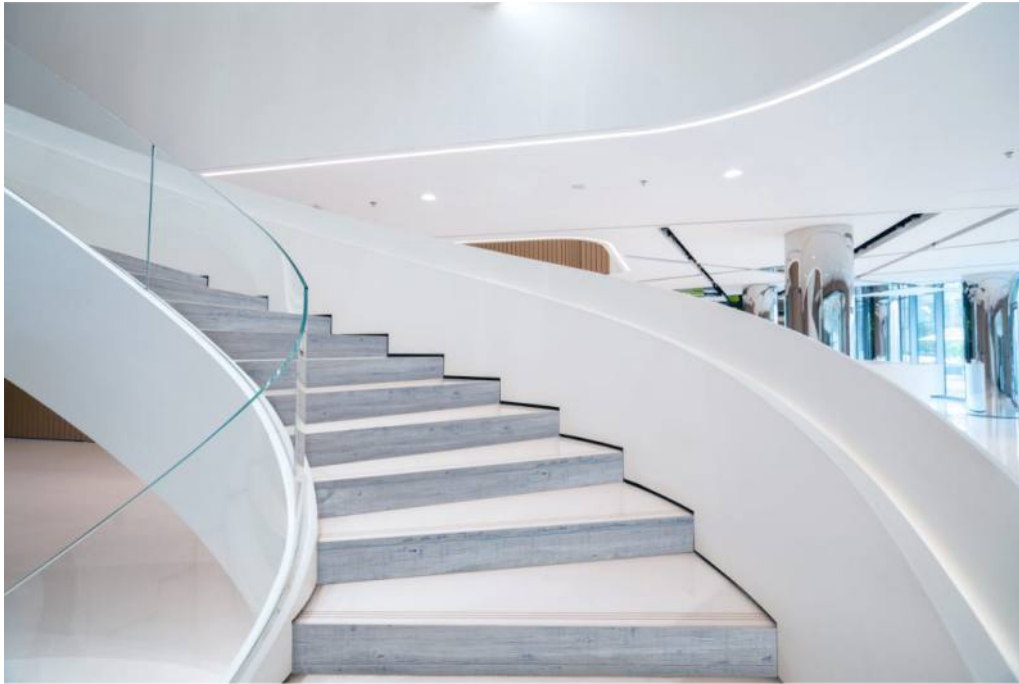
WS-107

Size:
4' x 8' (1220mm x 2440mm)
(+/- 5mm)

Thickness:
Approx 4mm

- Natural Feel
- Stone Cladding
- Rustic Surface

Staircase



WS-108

Size:
4' x 8' (1220mm x 2440mm)
(+/- 5mm)

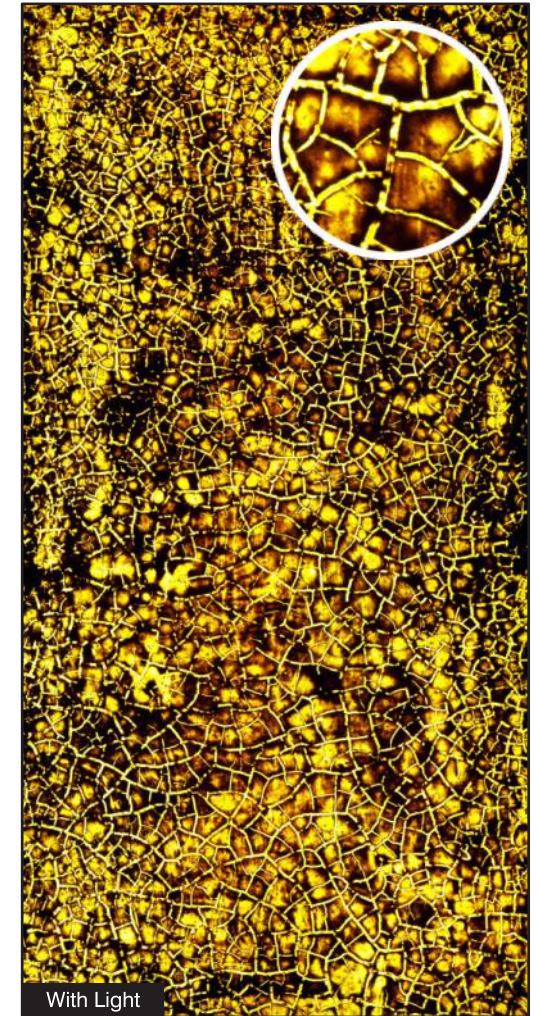
Thickness:
Approx 4mm

- Natural Feel
- Stone Cladding
- Rustic Surface

Reception Table



Without Light



With Light

MU-101

Size:
4' x 8' (1220mm x 2440mm)
(+/- 5mm)

Thickness:
Approx 4mm

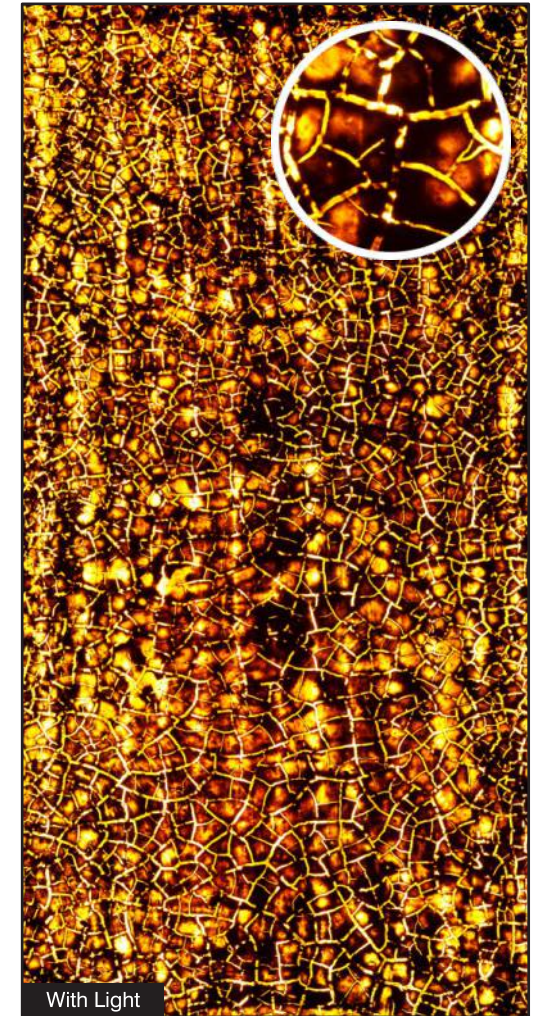
- Natural Feel
- Stone Cladding
- Rustic Surface



Exterior



Without Light



With Light

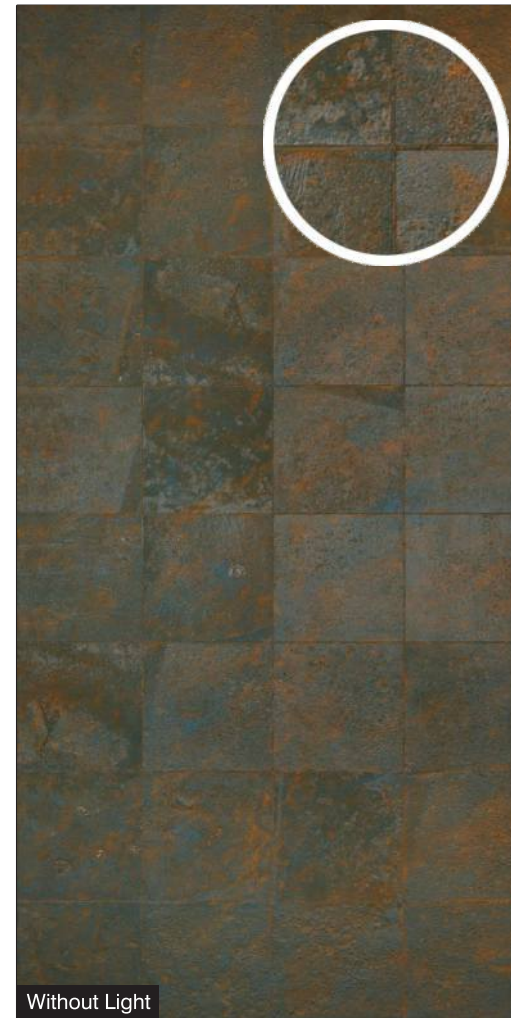
MU-102

Size:
4' x 8' (1220mm x 2440mm)
(+/- 5mm)

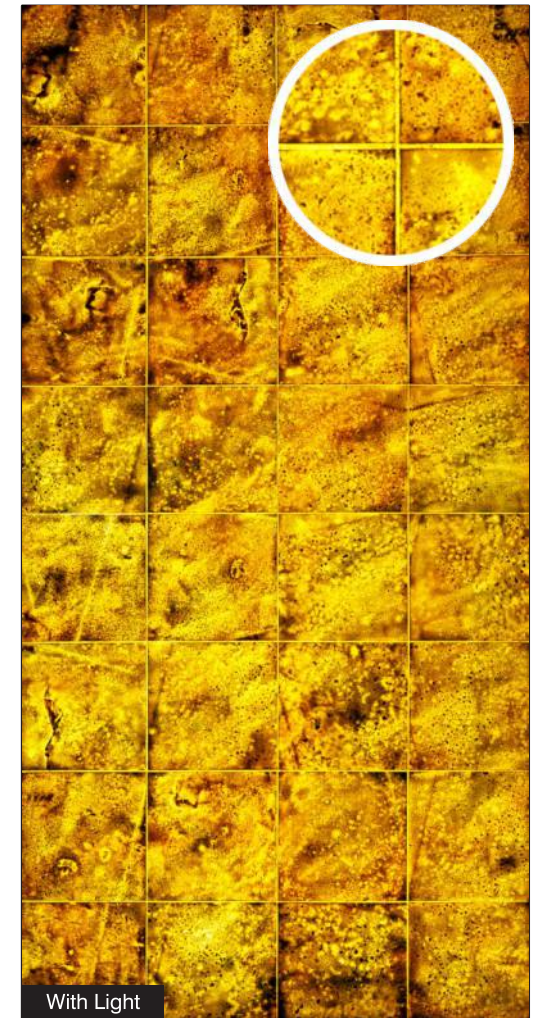
Thickness:
Approx 4mm

- Natural Feel
- Stone Cladding
- Rustic Surface

Backdrop



Without Light



With Light

GS-101

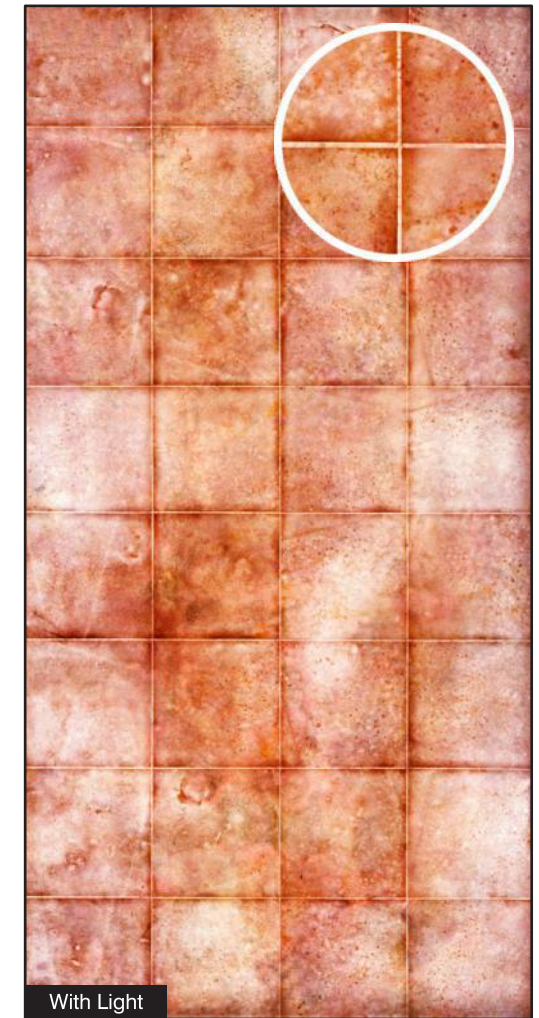
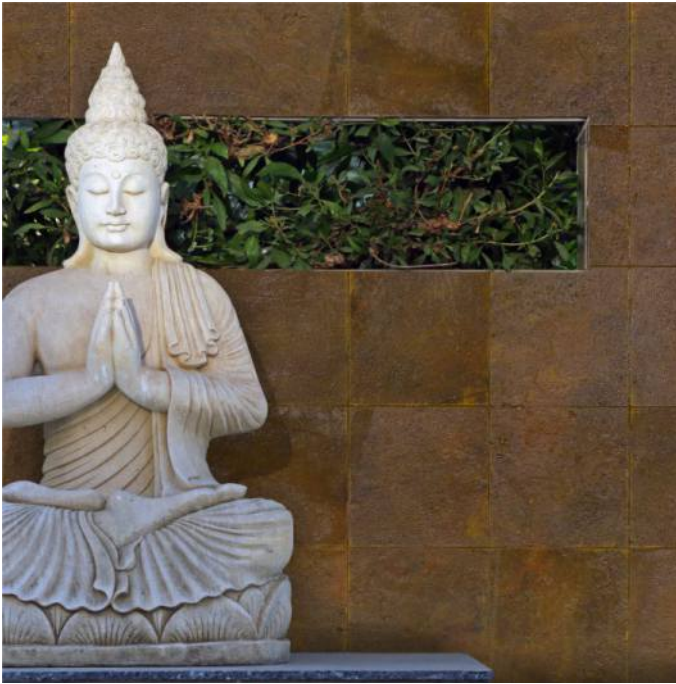
Size:
4' x 8' (1220mm x 2440mm)
(+/- 5mm)

Thickness:
Approx 4mm

- Natural Feel
- Stone Cladding
- Rustic Surface



Sculpture Wall



GS-102

Size:
4' x 8' (1220mm x 2440mm)
(+/- 5mm)

Thickness:
Approx 4mm

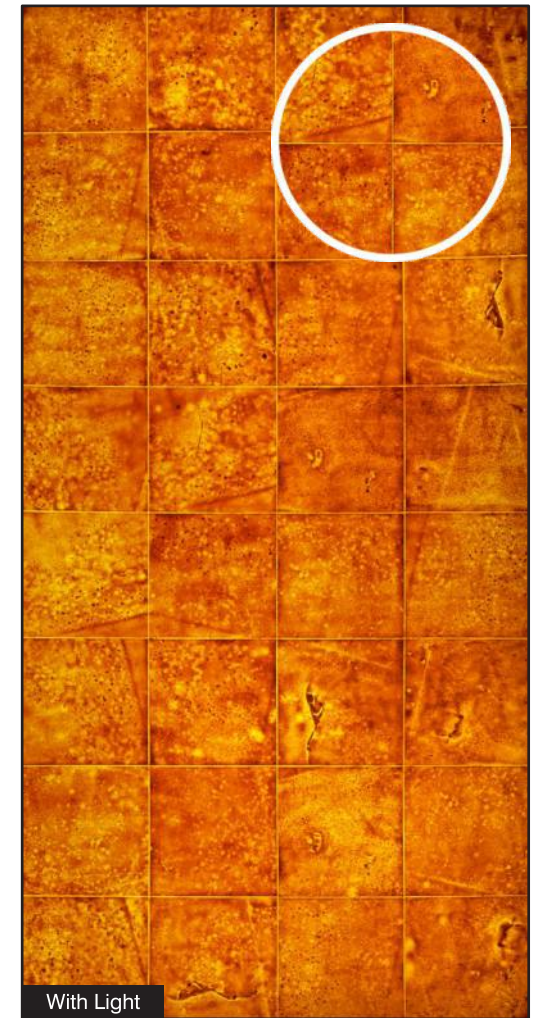
- Natural Feel
- Stone Cladding
- Rustic Surface



Dining Area



Without Light



With Light



GS-103

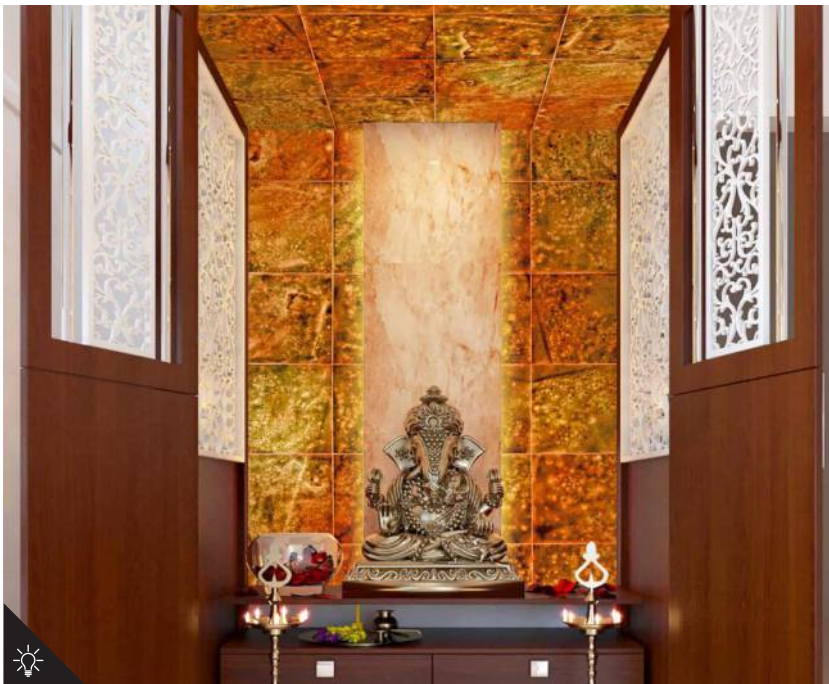
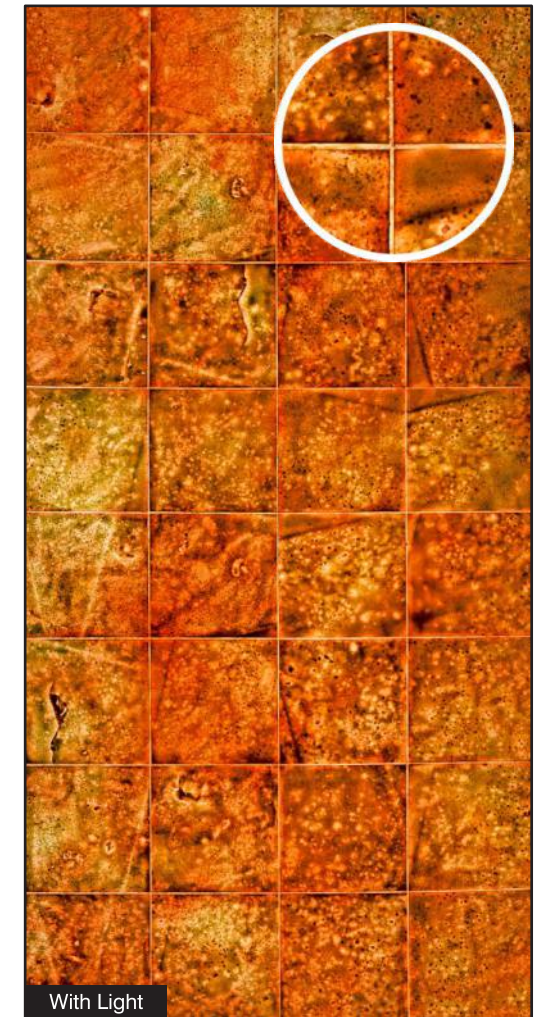
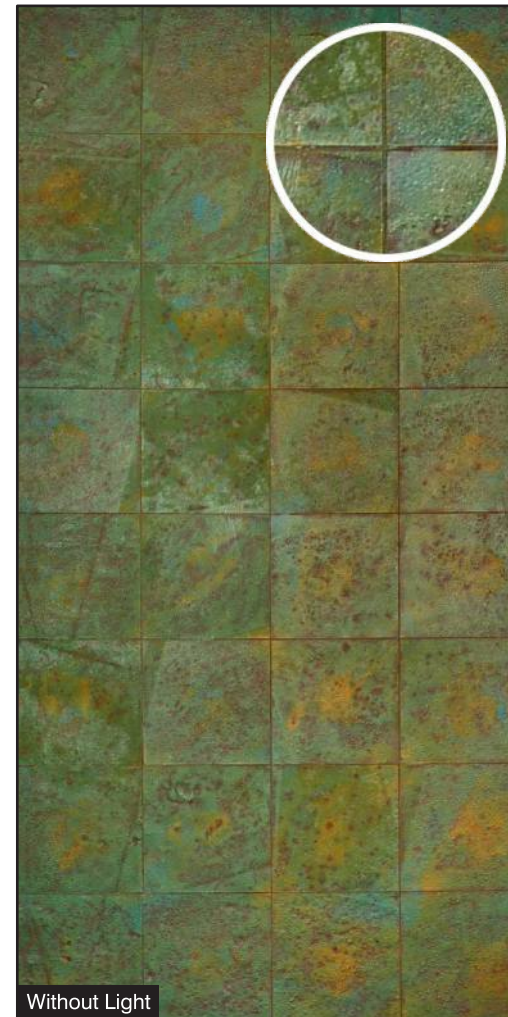
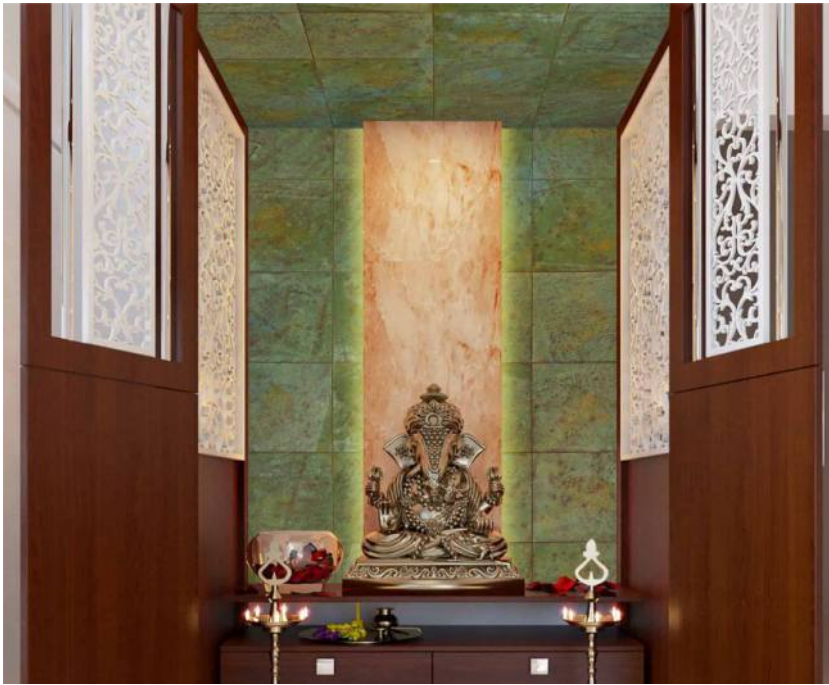
Size:
4' x 8' (1220mm x 2440mm)
(+/- 5mm)

Thickness:
Approx 4mm

- Natural Feel
- Stone Cladding
- Rustic Surface



Pooja Room



GS-104

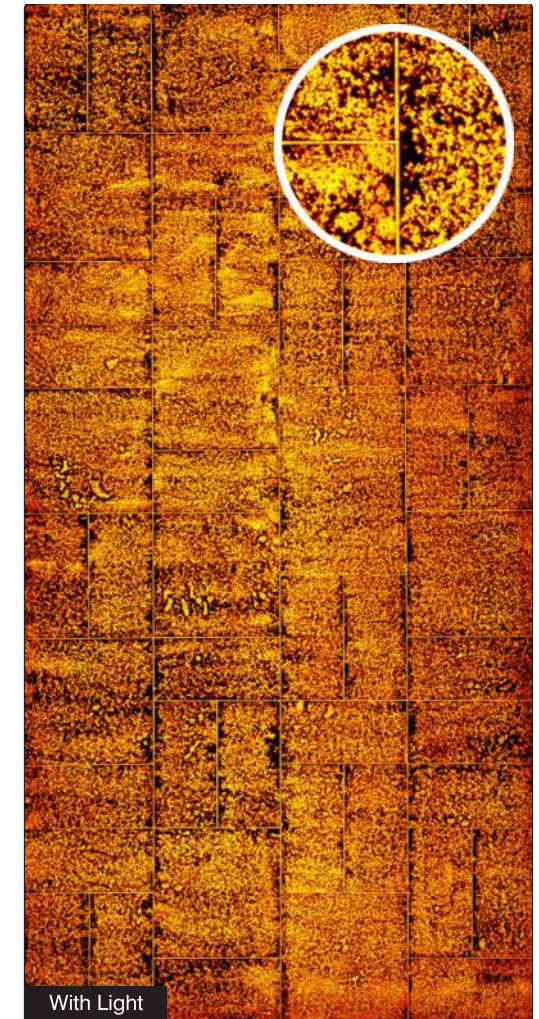
Size:
4' x 8' (1220mm x 2440mm)
(+/- 5mm)

Thickness:
Approx 4mm

- Natural Feel
- Stone Cladding
- Rustic Surface



Living room



GS-201

Size:
4' x 8' (1220mm x 2440mm)
(+/- 5mm)

Thickness:
Approx 4mm

- Natural Feel
- Stone Cladding
- Rustic Surface



Hotel Interior



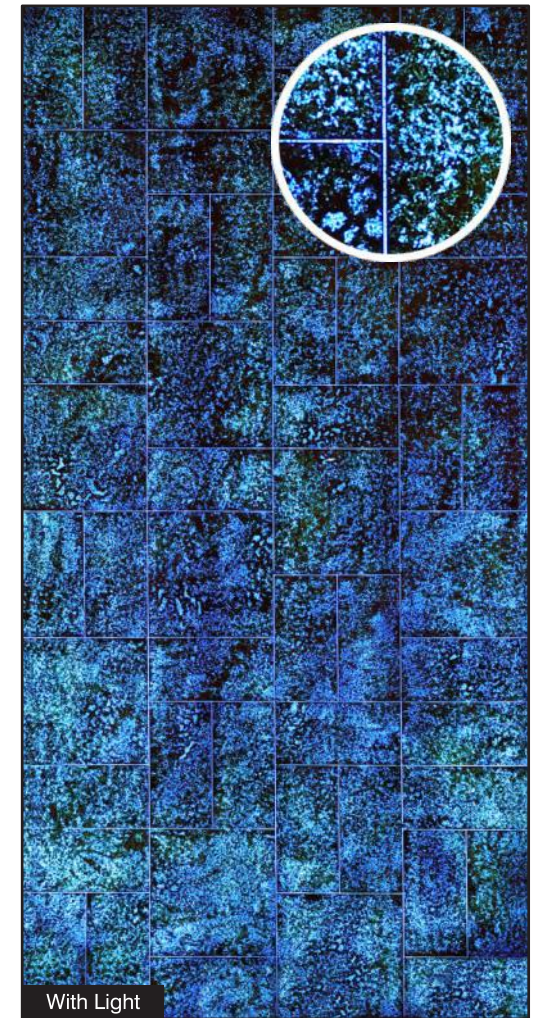
GS-202

Size:
4' x 8' (1220mm x 2440mm)
(+/- 5mm)

Thickness:
Approx 4mm

- Natural Feel
- Stone Cladding
- Rustic Surface

Table



GS-203

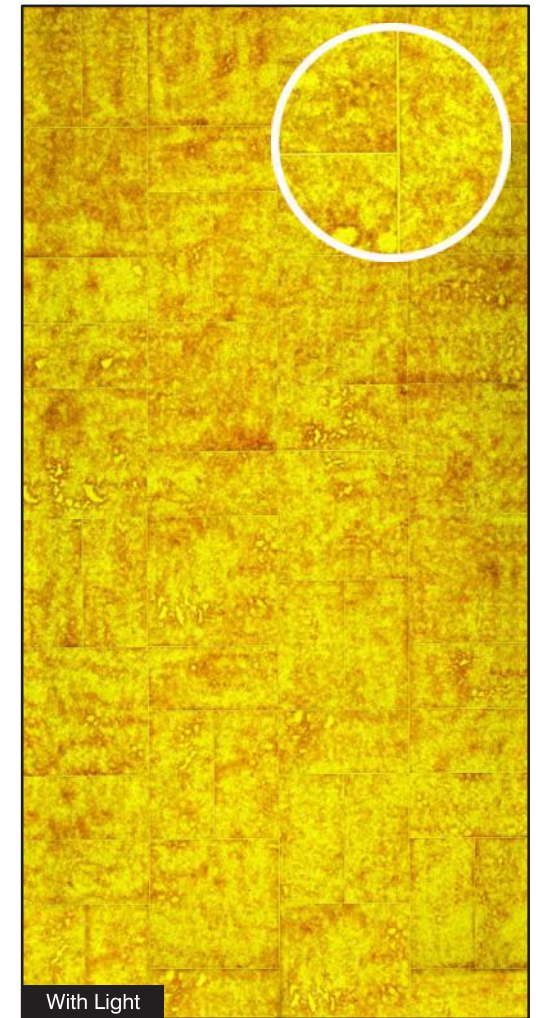
Size:
4' x 8' (1220mm x 2440mm)
(+/- 5mm)

Thickness:
Approx 4mm

- Natural Feel
- Stone Cladding
- Rustic Surface



Light box



GS-204

Size:
4' x 8' (1220mm x 2440mm)
(+/- 5mm)

Thickness:
Approx 4mm

- Natural Feel
- Stone Cladding
- Rustic Surface

Office



Without Light

With Light

GS-205

Size:
4' x 8' (1220mm x 2440mm)
(+/- 5mm)

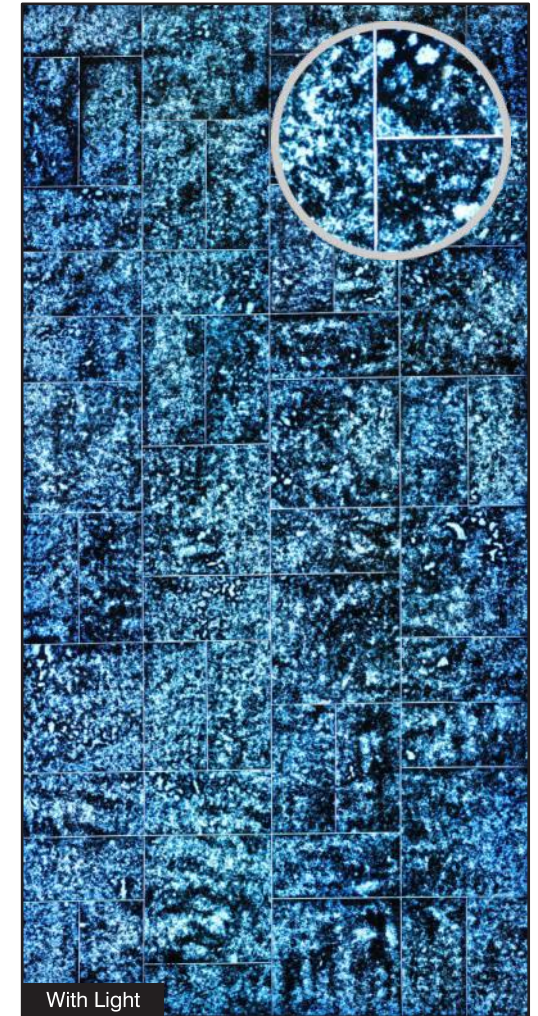
Thickness:
Approx 4mm

- Natural Feel
- Stone Cladding
- Rustic Surface





Ceiling



GS-206

Size:
4' x 8' (1220mm x 2440mm)
(+/- 5mm)

Thickness:
Approx 4mm

- Natural Feel
- Stone Cladding
- Rustic Surface

Wash basin wall



GS-207

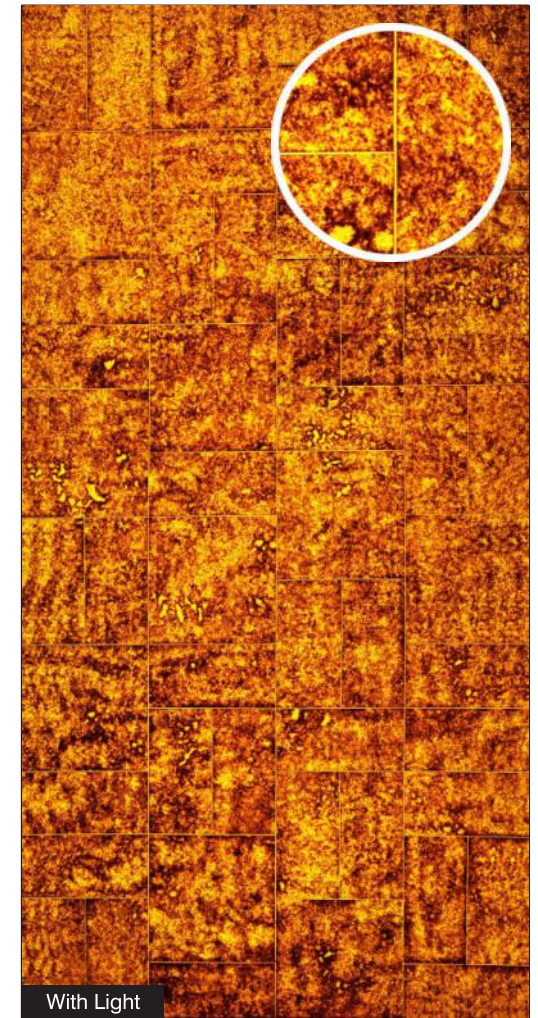
Size:
4' x 8' (1220mm x 2440mm)
(+/- 5mm)

Thickness:
Approx 4mm

- Natural Feel
- Stone Cladding
- Rustic Surface



Kitchen



GS-208

Size:
4' x 8' (1220mm x 2440mm)
(+/- 5mm)

Thickness:
Approx 4mm

- Natural Feel
- Stone Cladding
- Rustic Surface

Villa Exterior



Without Light



With Light

GS-209

Size:
4' x 8' (1220mm x 2440mm)
(+/- 5mm)

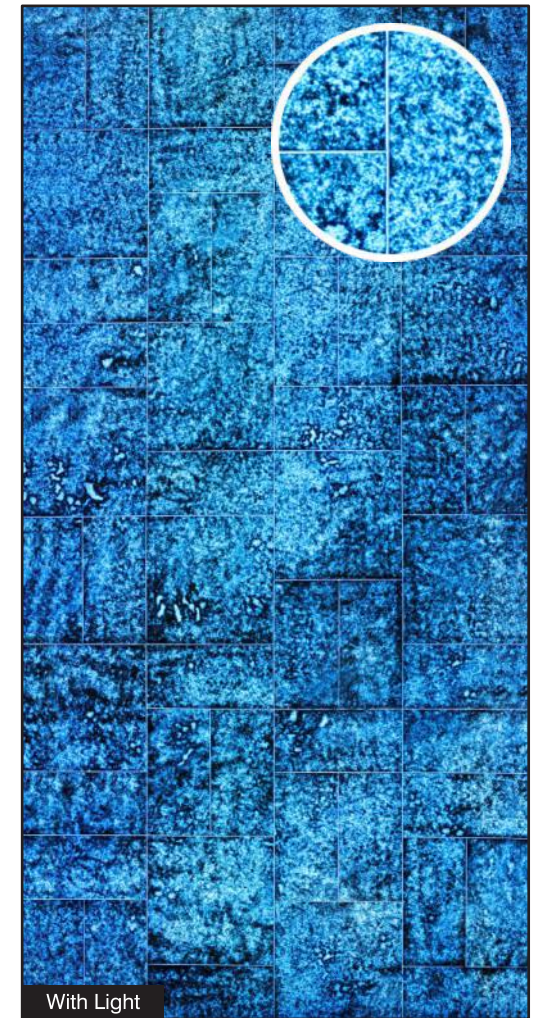
Thickness:
Approx 4mm

- Natural Feel
- Stone Cladding
- Rustic Surface





Backdrop



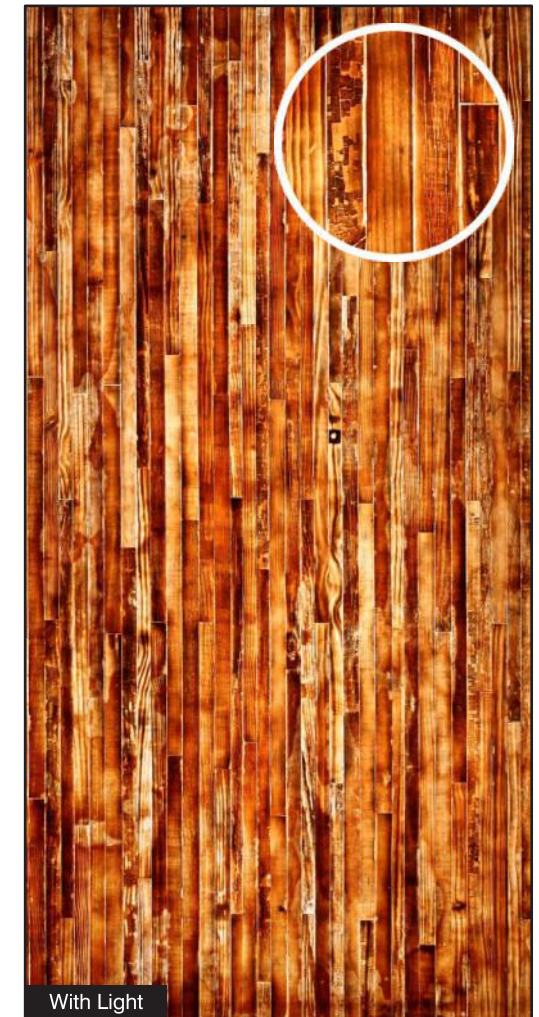
GS-210

Size:
4' x 8' (1220mm x 2440mm)
(+/- 5mm)

Thickness:
Approx 4mm

- Natural Feel
- Stone Cladding
- Rustic Surface

Main Door



SP-111

Size:
4' x 8' (1220mm x 2440mm)
(+/- 5mm)

Thickness:
Approx 6-7mm

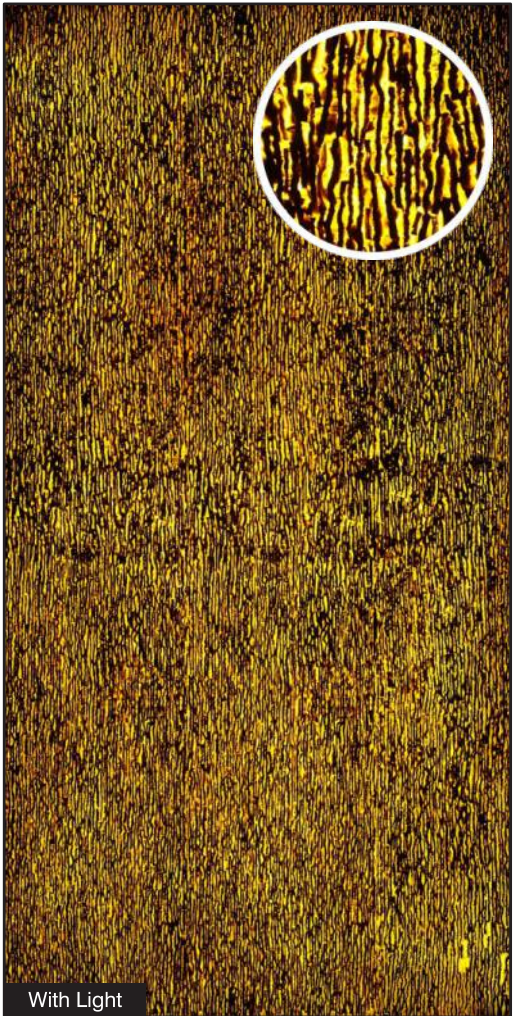
- Natural Feel
- Stone Cladding
- Rustic Surface



Furniture



Without Light



With Light



Size:
4' x 8' (1220mm x 2440mm)
(+/- 5mm)

SP-222

Thickness:
Approx 6-7mm

- Natural Feel
- Stone Cladding
- Rustic Surface



CNG SERIES for Glow Signage and Glow Wall Piece



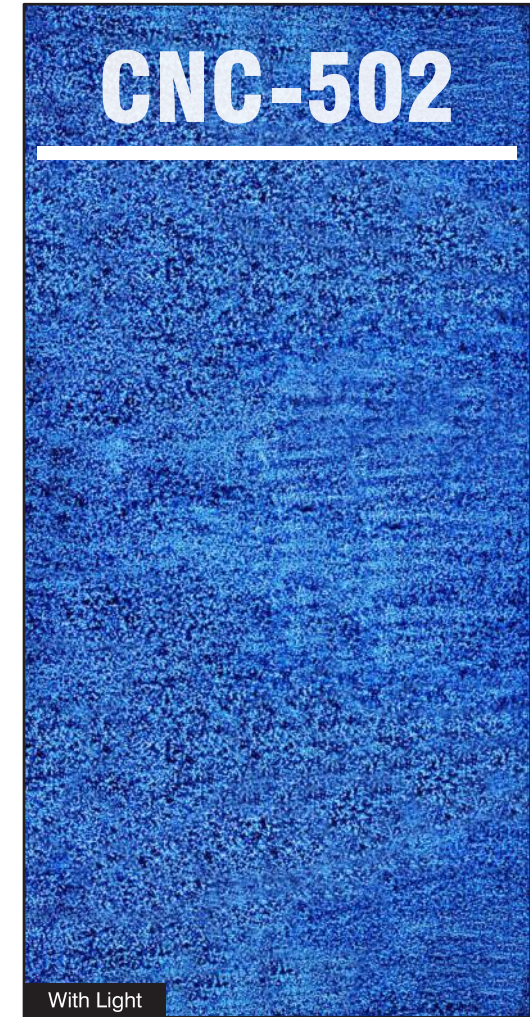
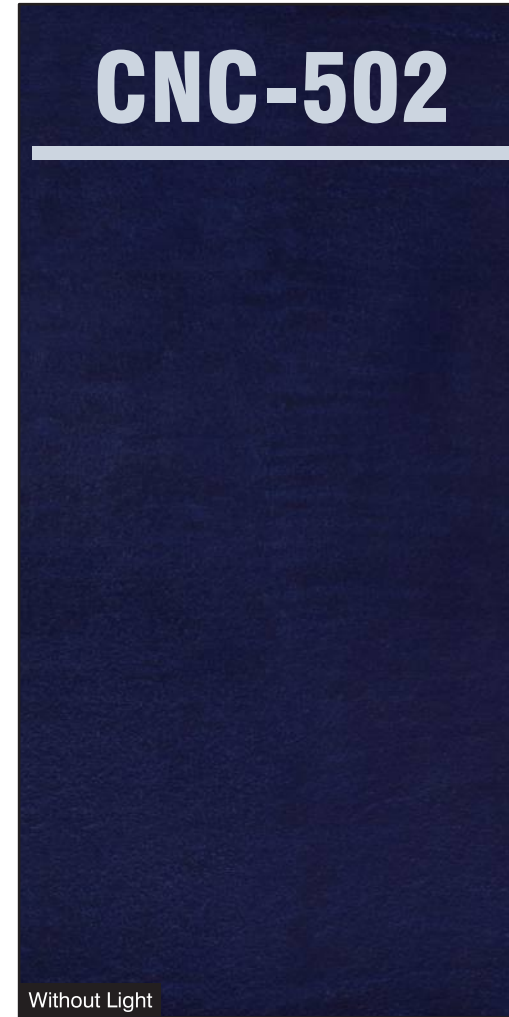
- Natural Feel
- Stone Cladding
- Rustic Surface

Size:
4' x 8' (1220mm x 2440mm)
(+/- 5mm)

Thickness:
Approx **5mm**



FRONT SIDE DARK BROWN **CNC-501** BACK SIDE ORANGE



FRONT SIDE BLUE **CNC-502** BACK SIDE WHITE

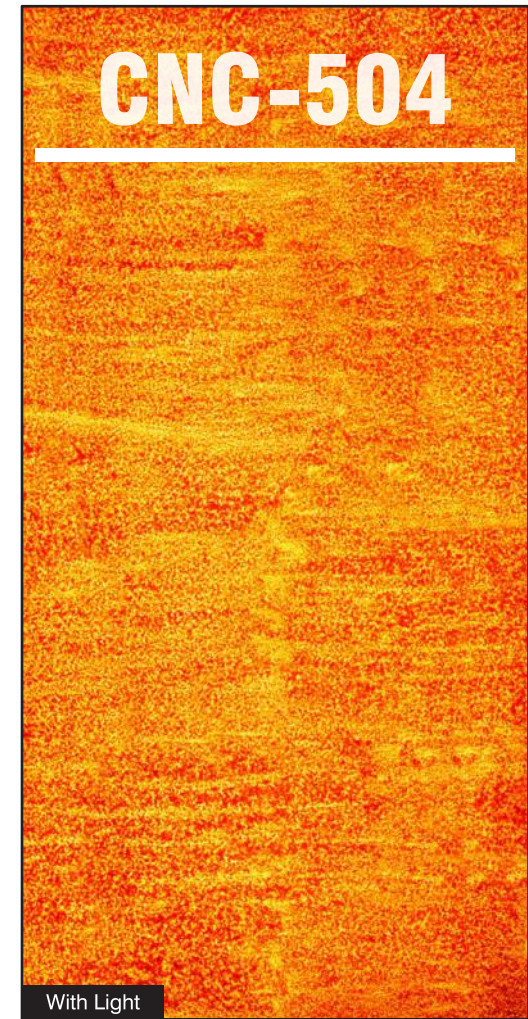
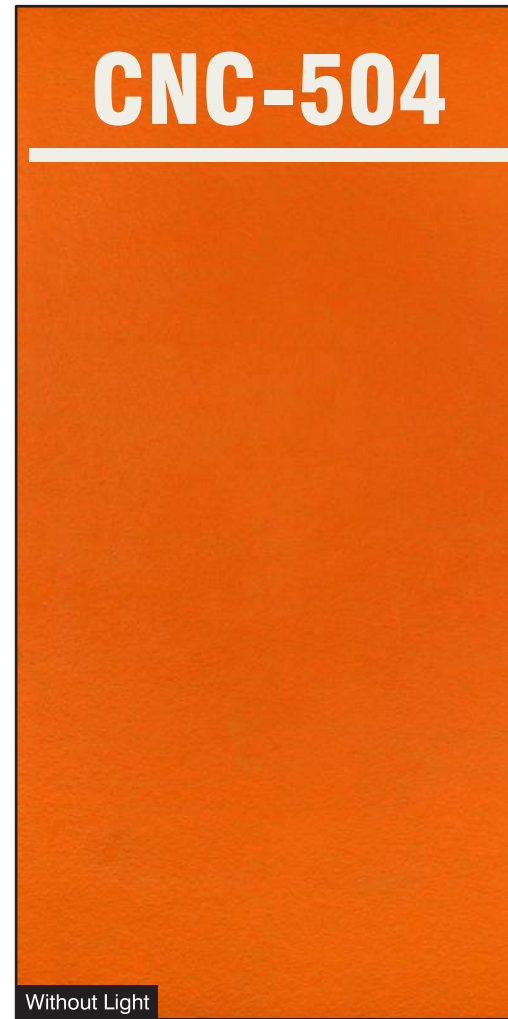
- Natural Feel
- Stone Cladding
- Rustic Surface

Size:
4' x 8' (1220mm x 2440mm)
(+/- 5mm)

Thickness:
Approx **5mm**



FRONT SIDE BLACK **CNC-503** BACK SIDE WHITE

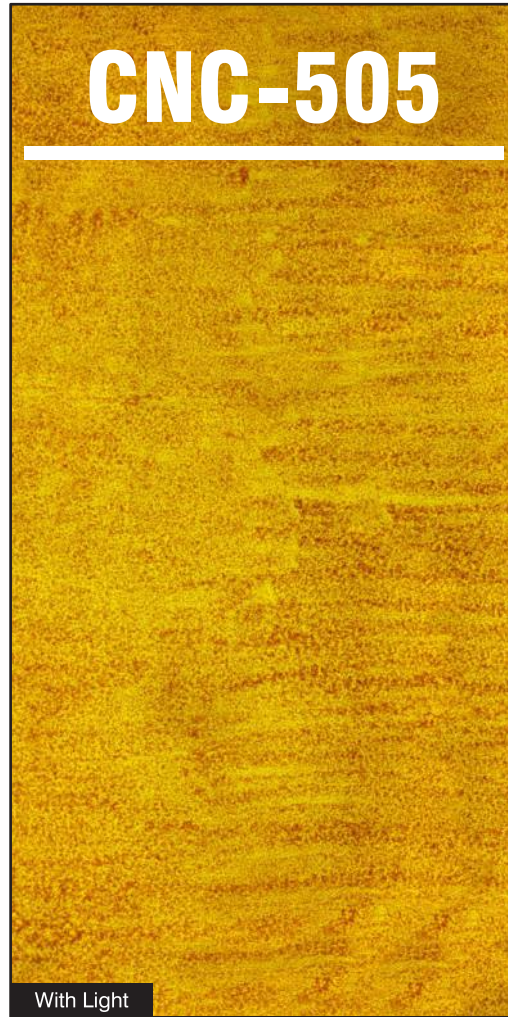
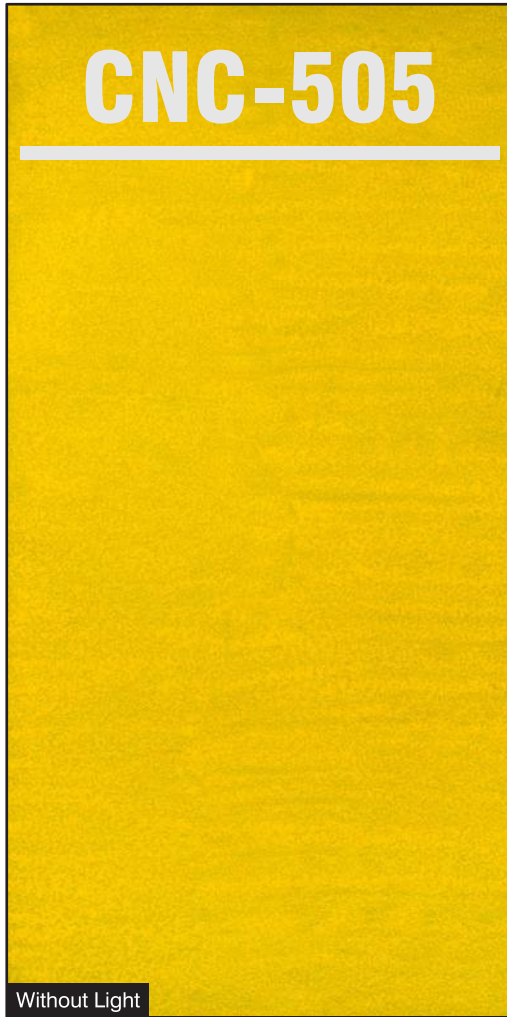


FRONT SIDE ORANGE **CNC-504** BACK SIDE WHITE

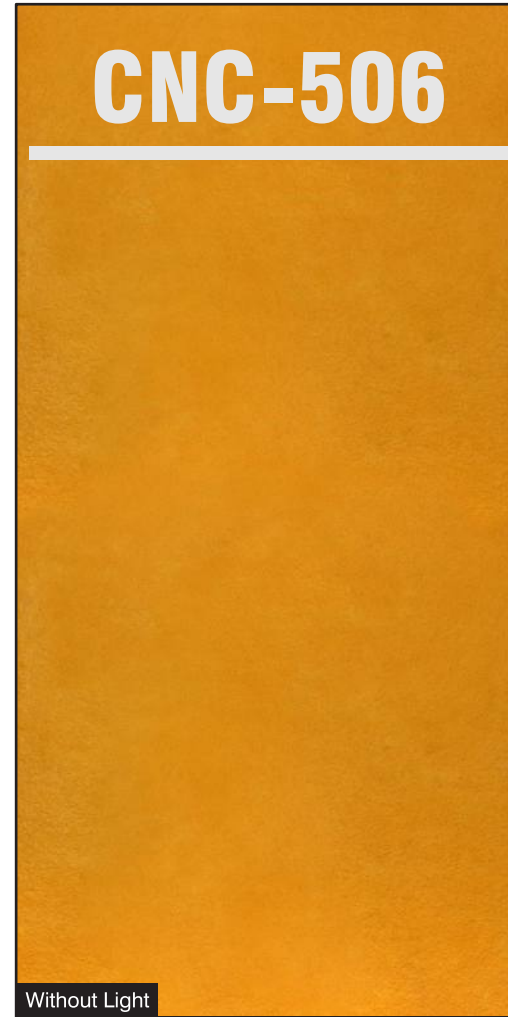
- Natural Feel
- Stone Cladding
- Rustic Surface

Size:
4' x 8' (1220mm x 2440mm)
(+/- 5mm)

Thickness:
Approx **5mm**



FRONT SIDE LEMON YELLOW **CNC-505** BACK SIDE WHITE

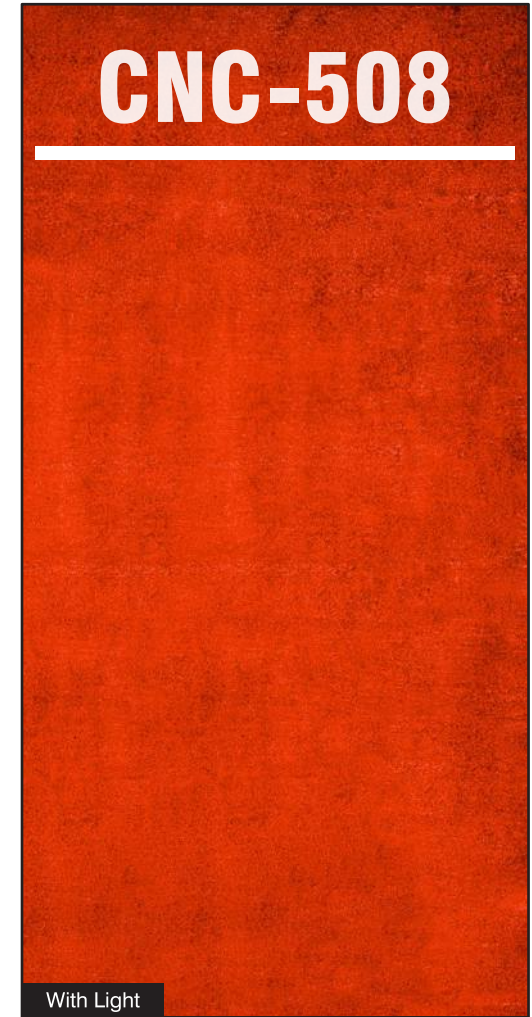


FRONT SIDE OCHER YELLOW **CNC-505** BACK SIDE WHITE

- Natural Feel
- Stone Cladding
- Rustic Surface

Size:
4' x 8' (1220mm x 2440mm)
(+/- 5mm)

Thickness:
Approx **5mm**



FRONT SIDE DARK GRAY **CNC-507** BACK SIDE WHITE

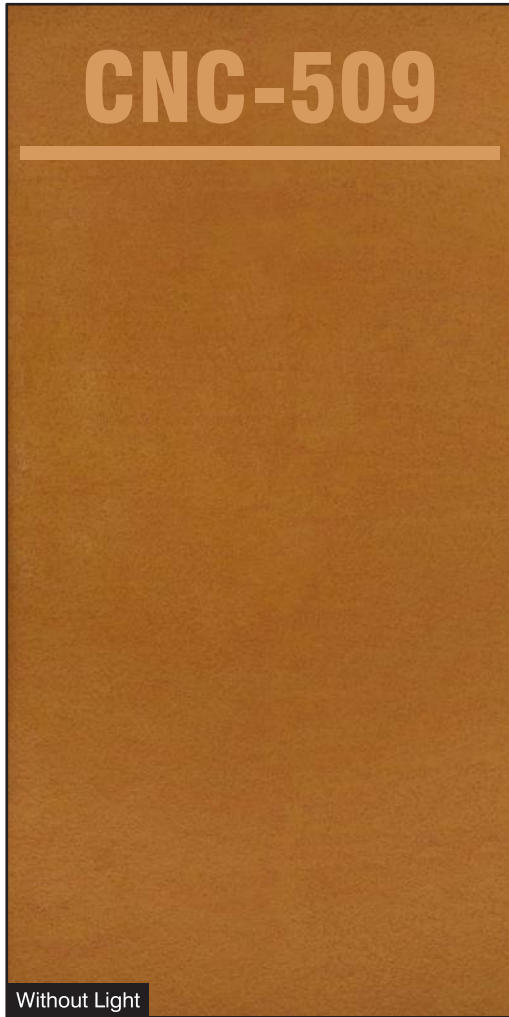
FRONT SIDE RED **CNC-508** BACK SIDE WHITE



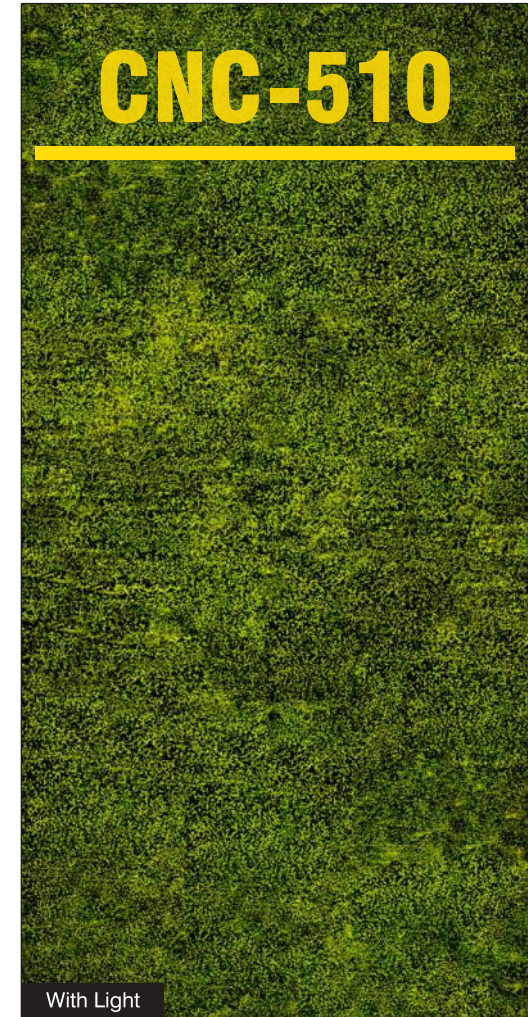
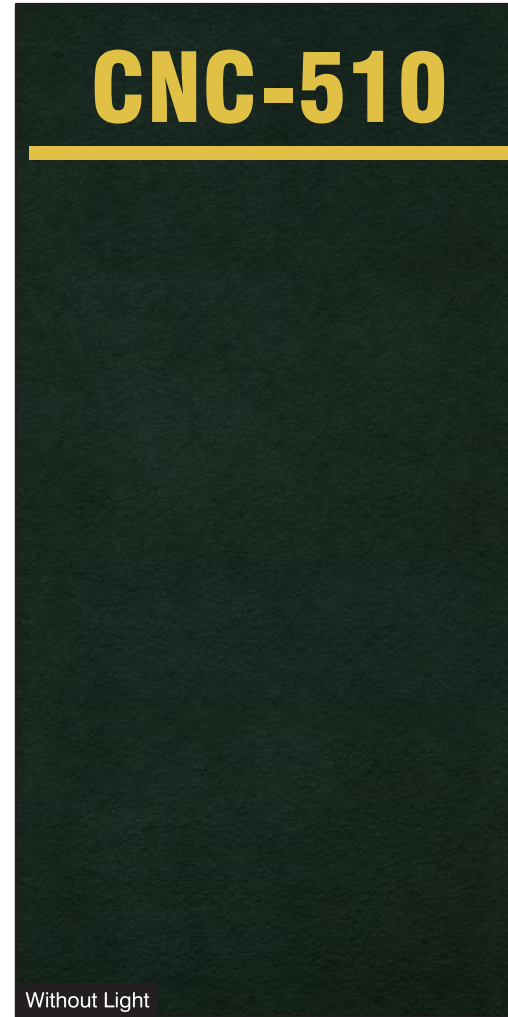
- Natural Feel
- Stone Cladding
- Rustic Surface

Size:
4' x 8' (1220mm x 2440mm)
(+/- 5mm)

Thickness:
Approx **5mm**



FRONT SIDE OCHER YELLOW **CNC-509** BACK SIDE ORANGE

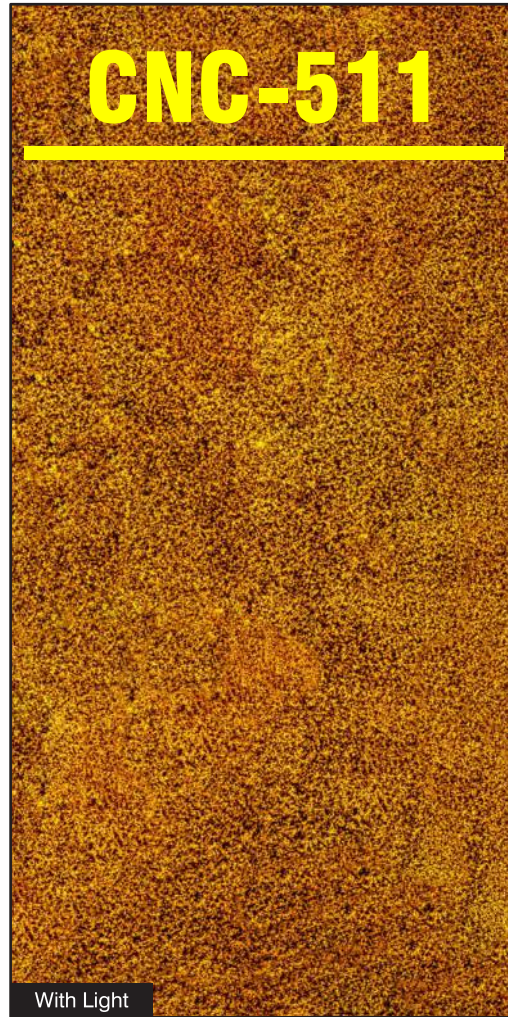
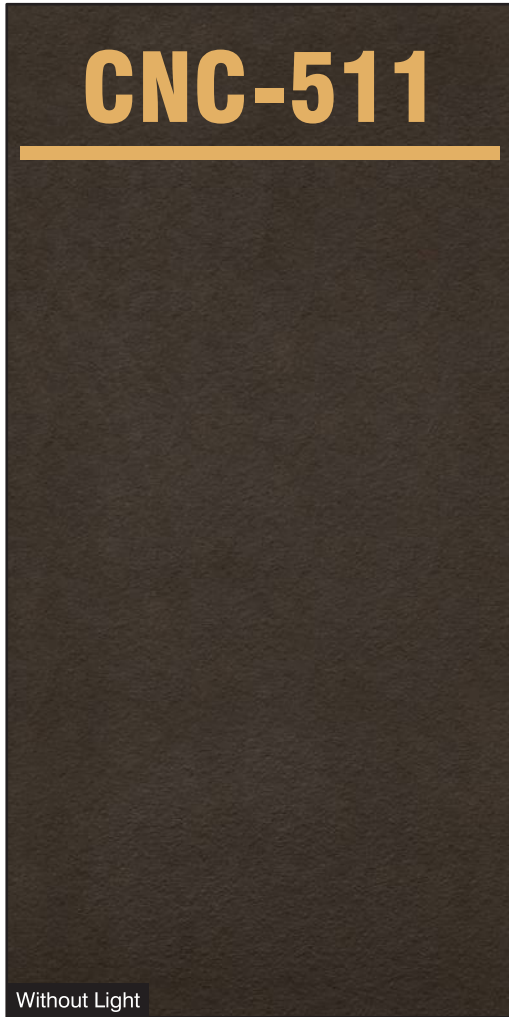


FRONT SIDE DARK GREEN **CNC-510** BACK SIDE YELLOW

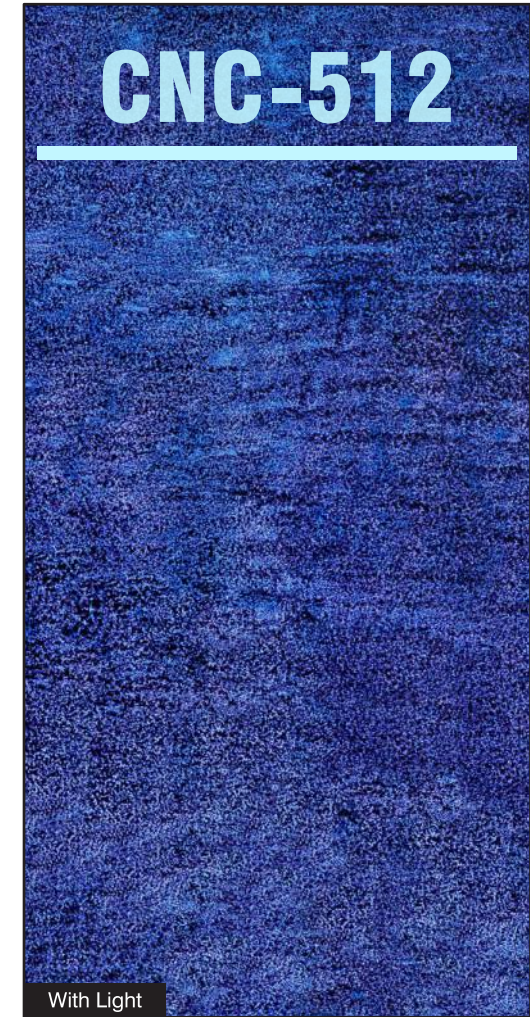
- Natural Feel
- Stone Cladding
- Rustic Surface

Size:
4' x 8' (1220mm x 2440mm)
(+/- 5mm)

Thickness:
Approx **5mm**



FRONT SIDE LIGHT BROWN **CNC-511** BACK SIDE YELLOW

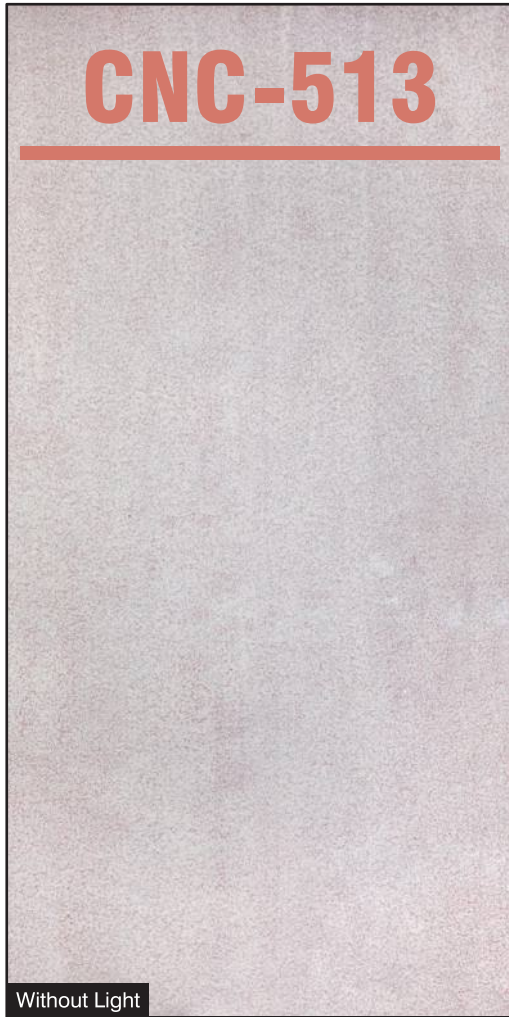


FRONT SIDE CHOCOLATE BROWN **CNC-512** BACK SIDE BLUE

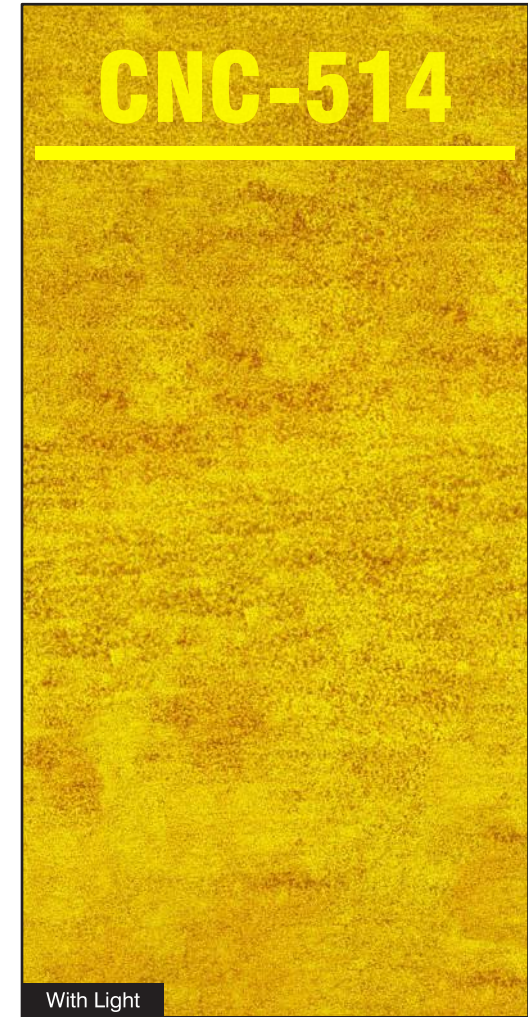
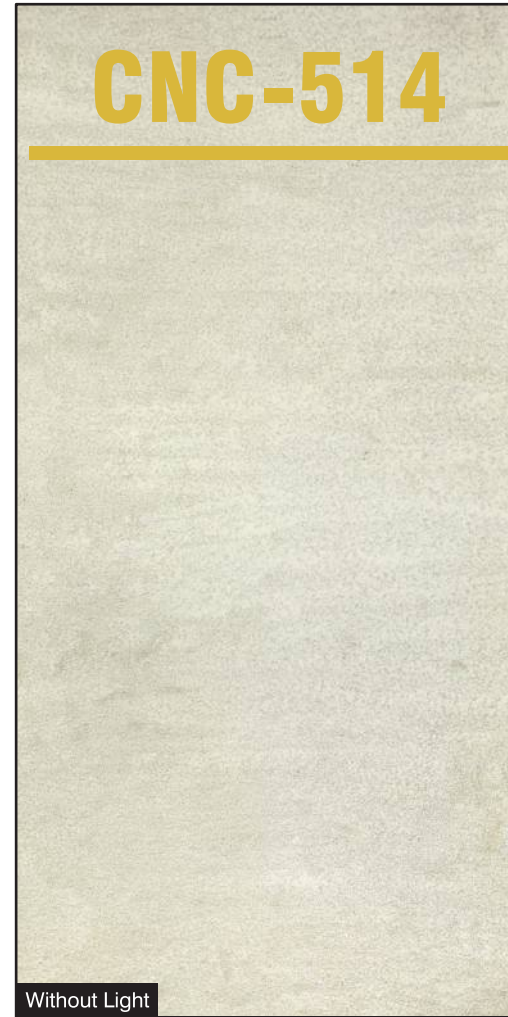
- Natural Feel
- Stone Cladding
- Rustic Surface

Size:
4' x 8' (1220mm x 2440mm)
(+/- 5mm)

Thickness:
Approx **5mm**



FRONT SIDE WHITE **CNC-513** BACK SIDE ORANGE

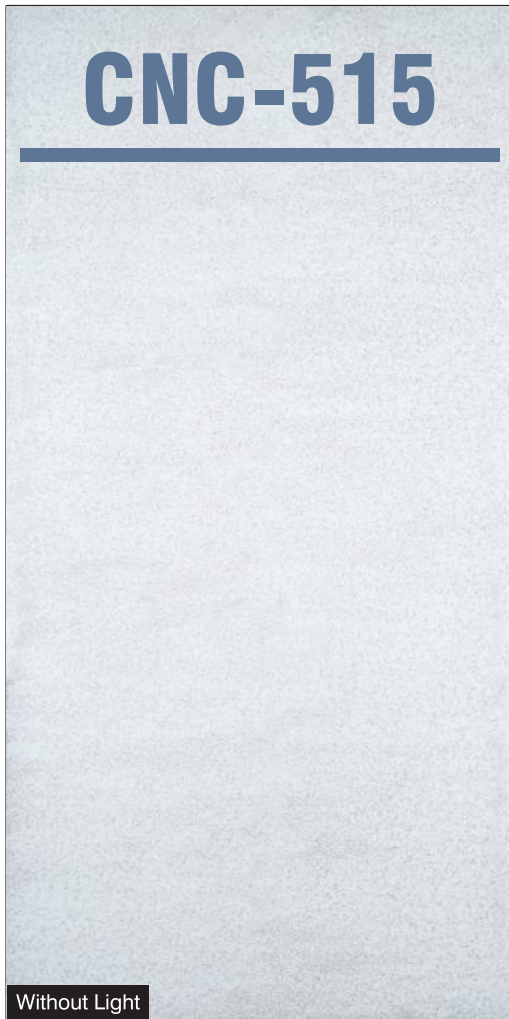


FRONT SIDE WHITE **CNC-514** BACK SIDE YELLOW

- Natural Feel
- Stone Cladding
- Rustic Surface

Size:
4' x 8' (1220mm x 2440mm)
(+/- 5mm)

Thickness:
Approx **5mm**



FRONT SIDE WHITE **CNC-515** BACK SIDE BLUE

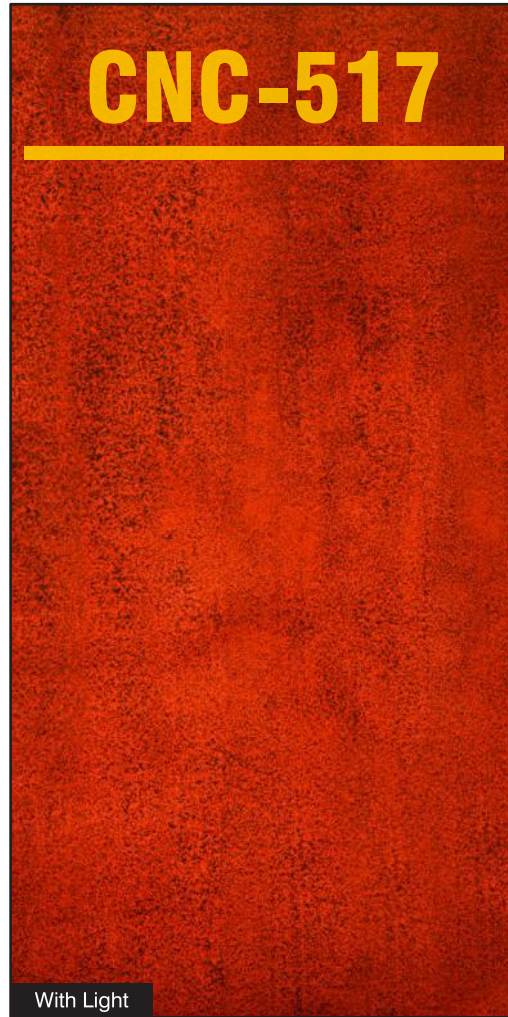
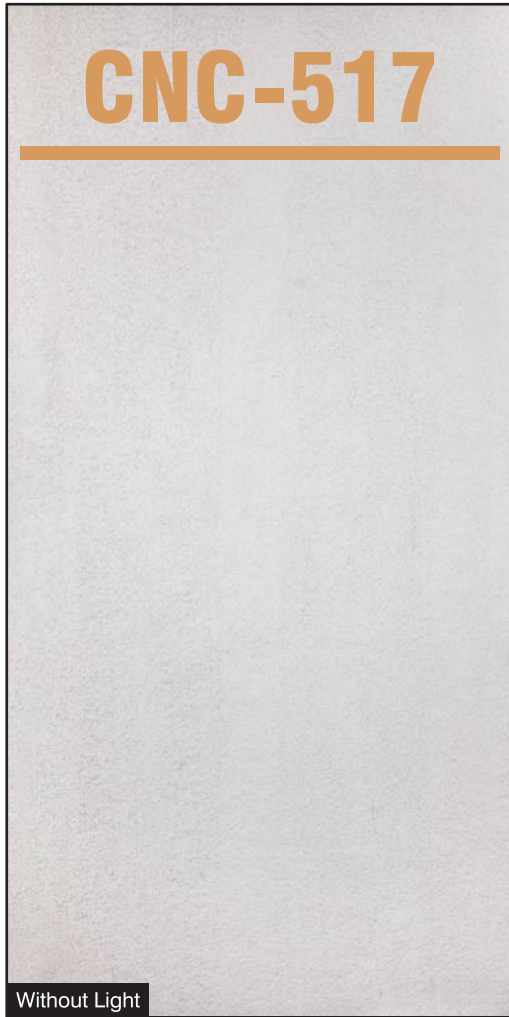


FRONT SIDE LIGHT GRAY **CNC-516** BACK SIDE BLUE

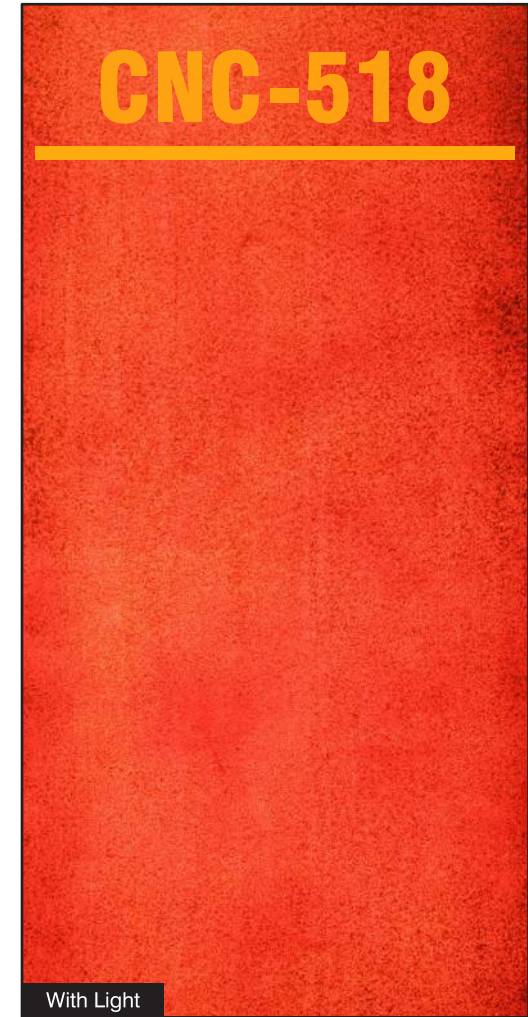
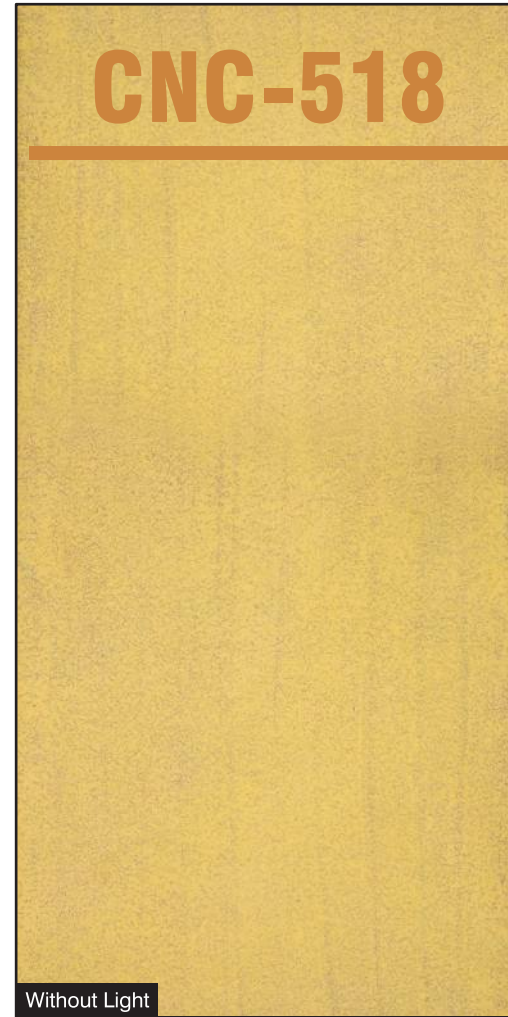
- Natural Feel
- Stone Cladding
- Rustic Surface

Size:
4' x 8' (1220mm x 2440mm)
(+/- 5mm)

Thickness:
Approx **5mm**



FRONT SIDE GRAY **CNC-517** BACK SIDE ORANGE

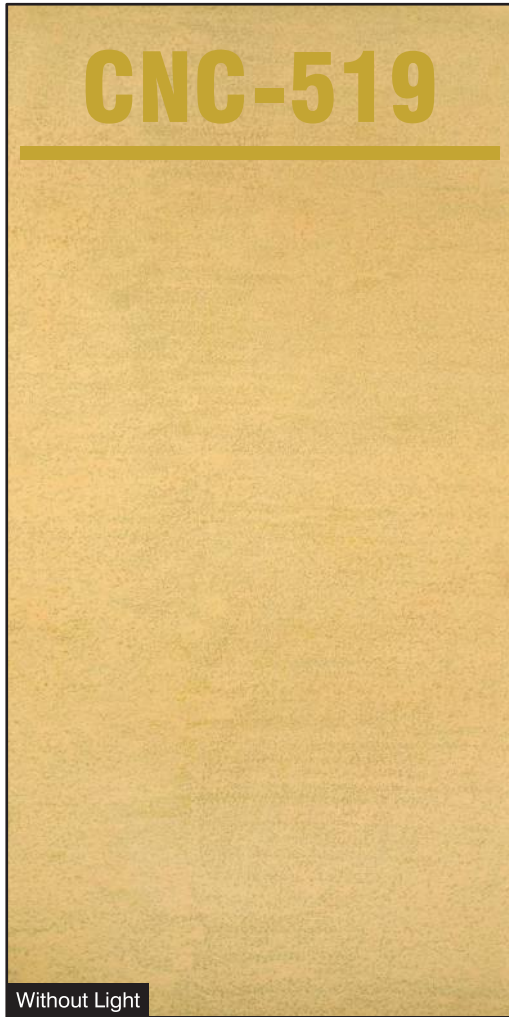


FRONT SIDE YELLOW **CNC-518** BACK SIDE ORANGE

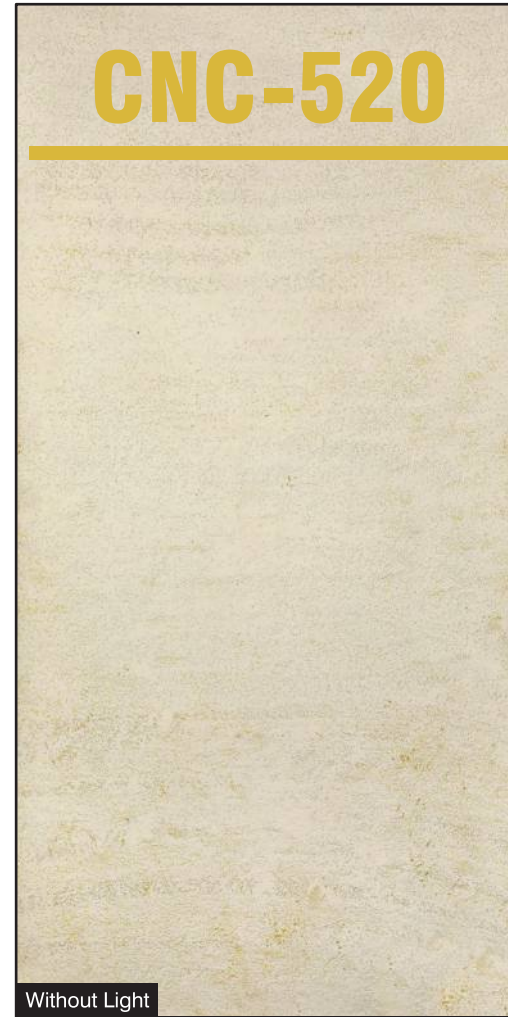
- Natural Feel
- Stone Cladding
- Rustic Surface

Size:
4' x 8' (1220mm x 2440mm)
(+/- 5mm)

Thickness:
Approx **5mm**



FRONT SIDE CREAM **CNC-519** BACK SIDE YELLOW

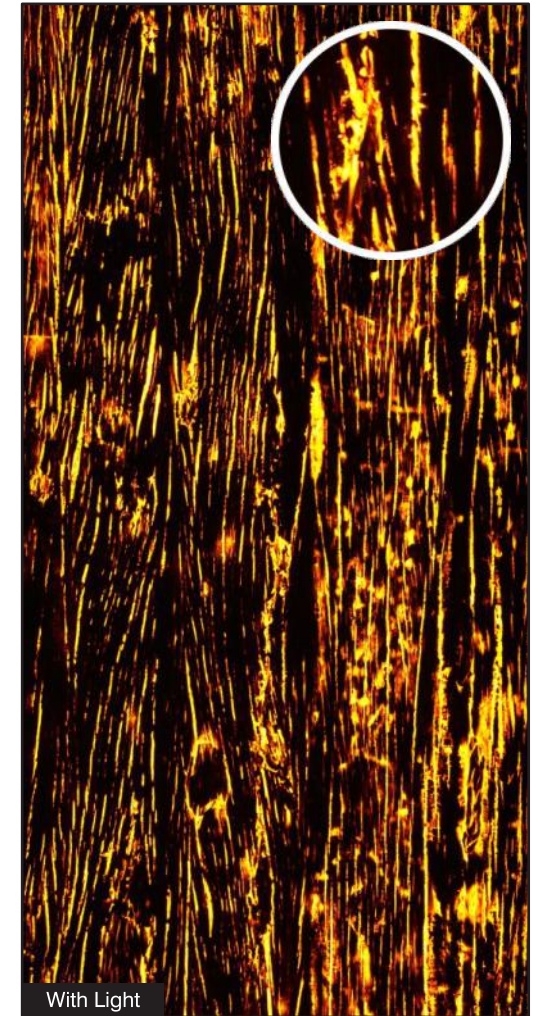


FRONT SIDE OFF WHITE **CNC-520** BACK SIDE YELLOW



Architectural Surface Series

Living Room



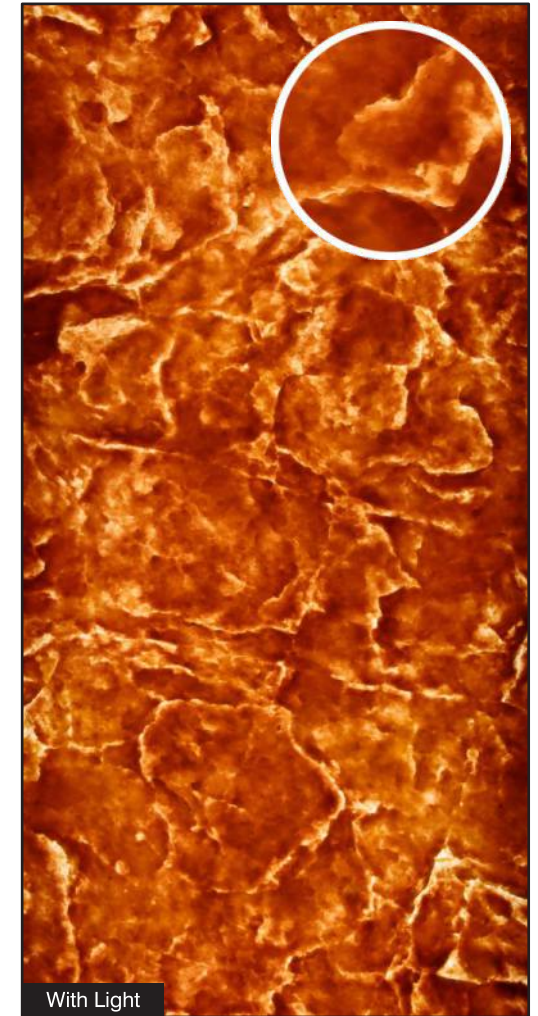
AR-1201

Size:
2' x 8' (610mm x 2440mm)
(+/- 5mm)

Thickness:
Approx 7-8mm

- Natural Feel
- Stone Cladding
- Rustic Surface

Palace Room



AR-1202

Size:
2' x 8' (610mm x 2440mm)
(+/- 5mm)

Thickness:
Approx 7-8mm

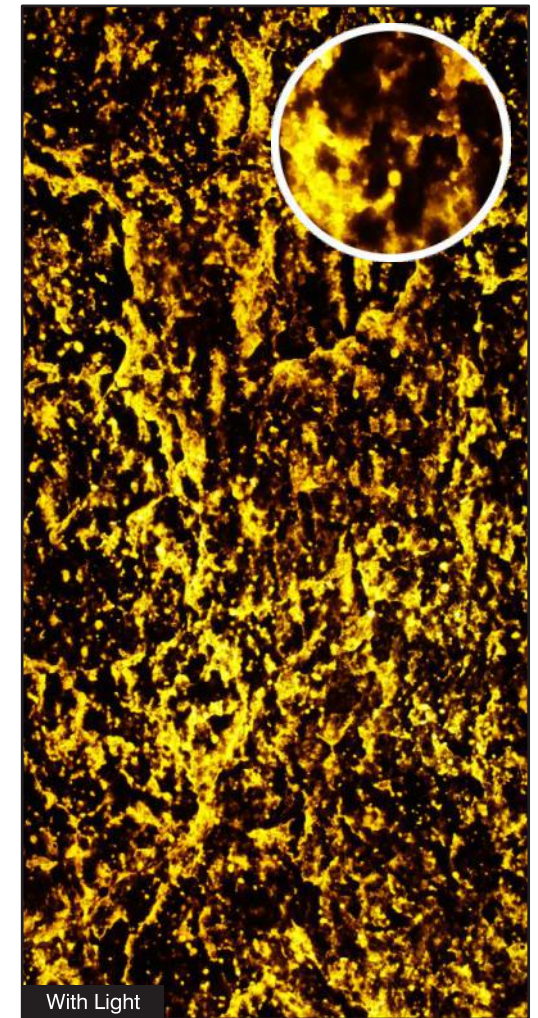
- Natural Feel
- Stone Cladding
- Rustic Surface



Reception Backdrop



Without Light



With Light

AR-1203

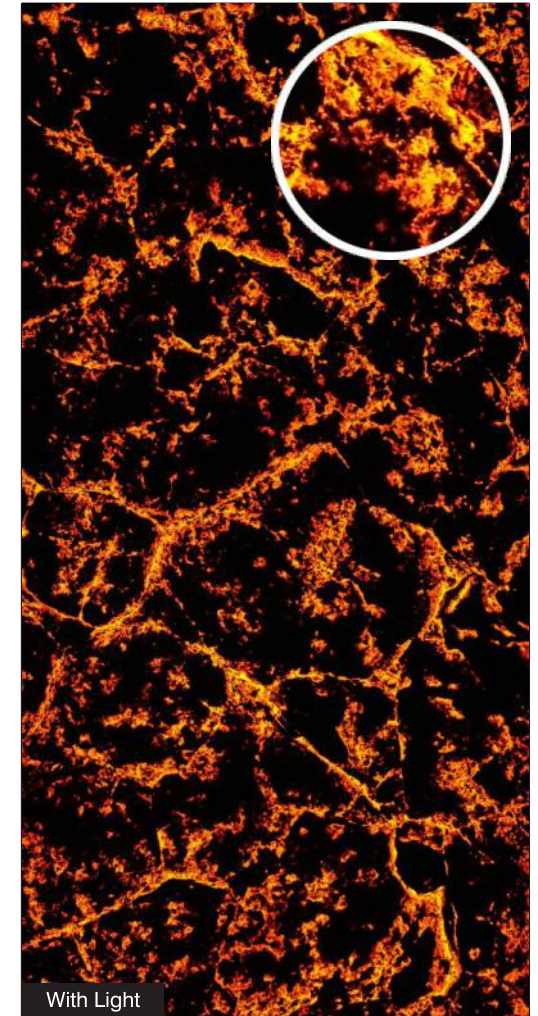
Size:
2' x 8' (610mm x 2440mm)
(+/- 5mm)

Thickness:
Approx 7-8mm

- Natural Feel
- Stone Cladding
- Rustic Surface



Office



AR-1204

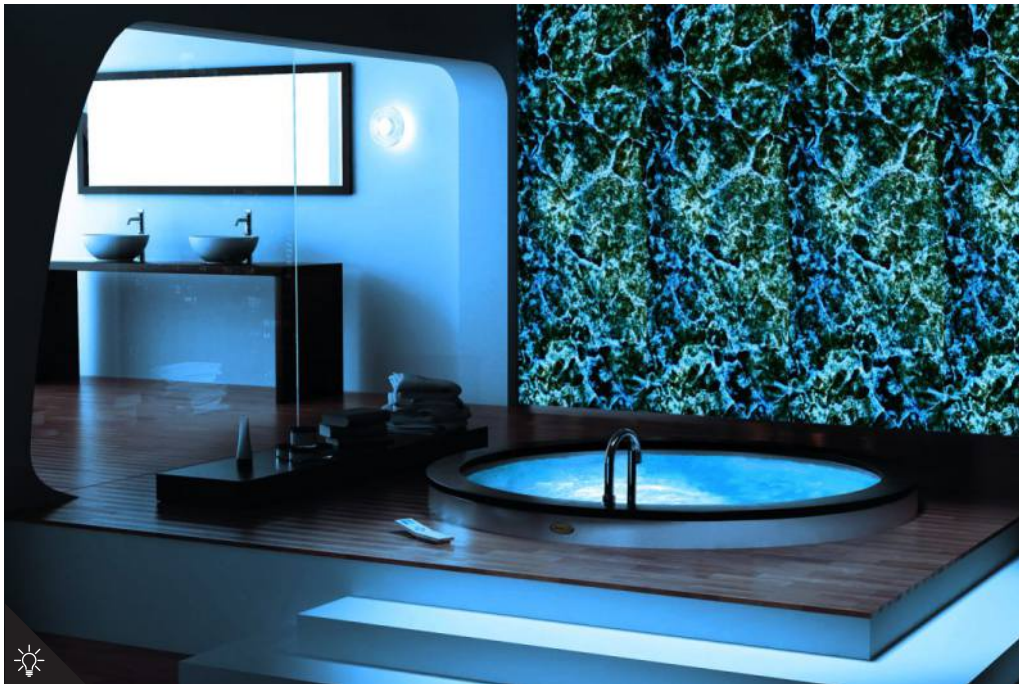
Size:
2' x 8' (610mm x 2440mm)
(+/- 5mm)

Thickness:
Approx 7-8mm

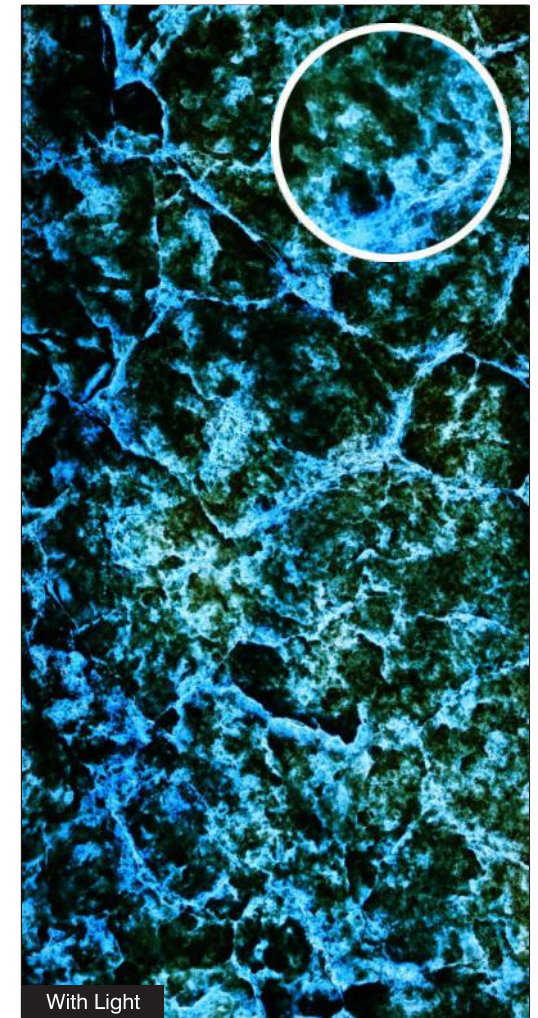
- Natural Feel
- Stone Cladding
- Rustic Surface



Bathroom



Without Light



With Light

AR-1205

Size:
2' x 8' (610mm x 2440mm)
(+/- 5mm)

Thickness:
Approx 7-8mm

- Natural Feel
- Stone Cladding
- Rustic Surface

Outdoor Fireplace



Without Light



With Light



AR-1206

Size:
2' x 8' (610mm x 2440mm)
(+/- 5mm)

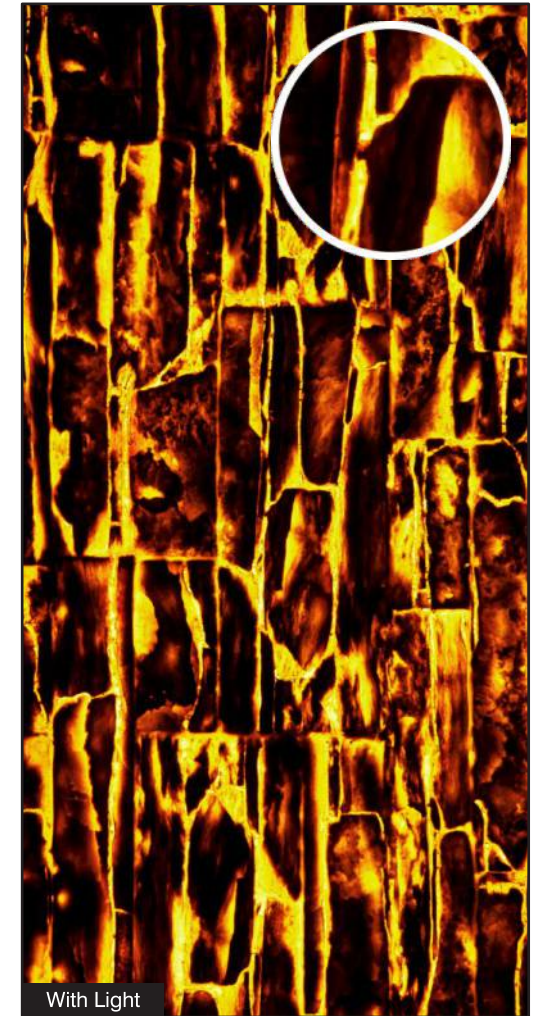
Thickness:
Approx 7-8mm

- Natural Feel
- Stone Cladding
- Rustic Surface

Backdrop



Without Light



With Light

AR-1207

Size:
2' x 8' (610mm x 2440mm)
(+/- 5mm)

Thickness:
Approx 7-8mm

- Natural Feel
- Stone Cladding
- Rustic Surface

Office Partition



AR-1208

Size:
2' x 8' (610mm x 2440mm)
(+/- 5mm)

Thickness:
Approx 7-8mm

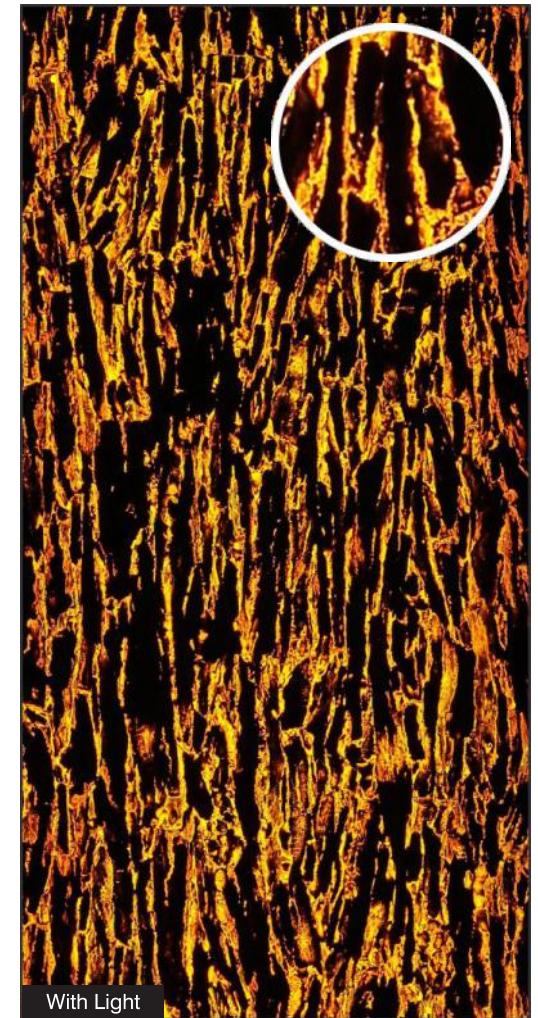
- Natural Feel
- Stone Cladding
- Rustic Surface



Dining Room



Without Light



With Light

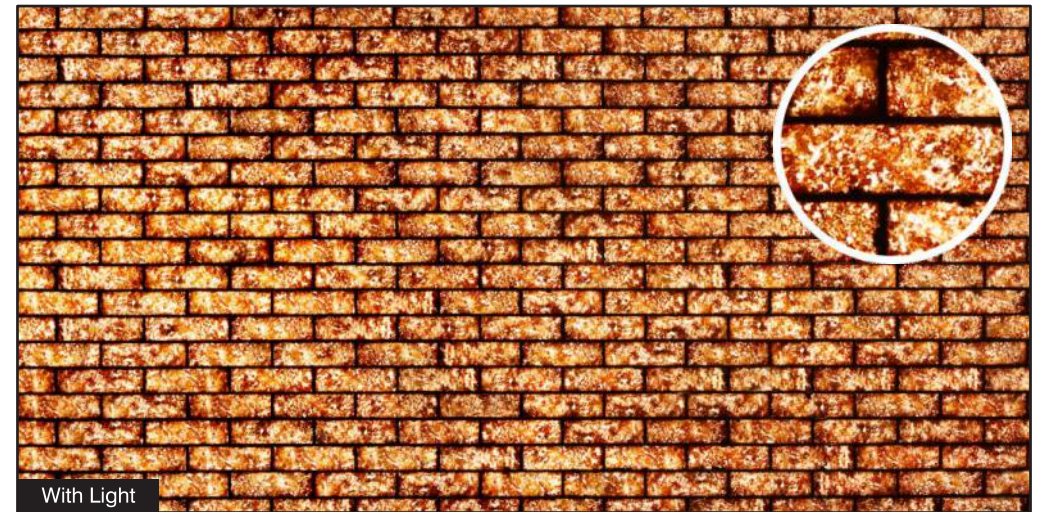
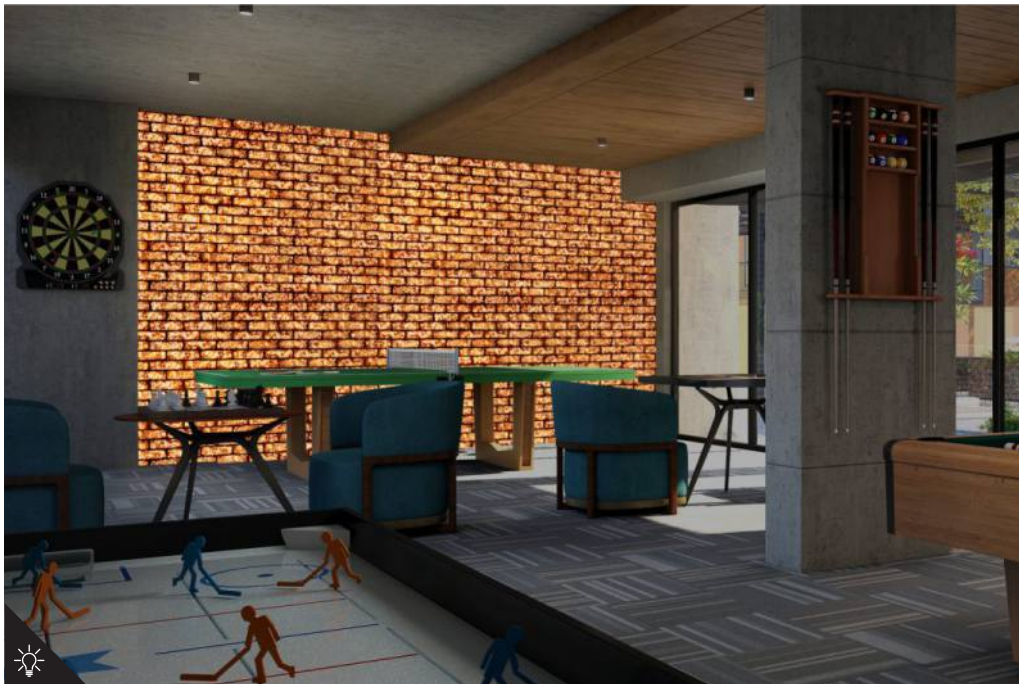
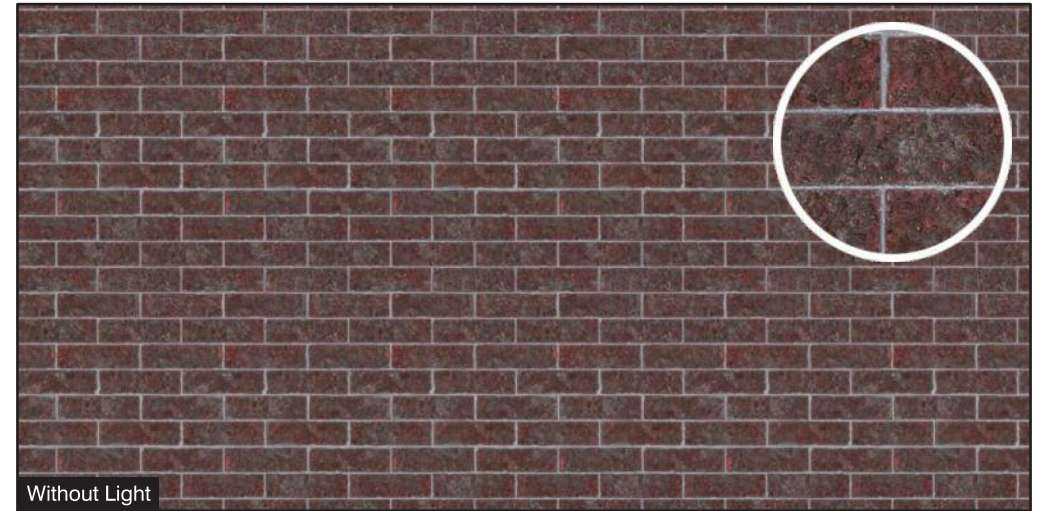
AR-1209

Size:
2' x 8' (610mm x 2440mm)
(+/- 5mm)

Thickness:
Approx 7-8mm

- Natural Feel
- Stone Cladding
- Rustic Surface

Club house



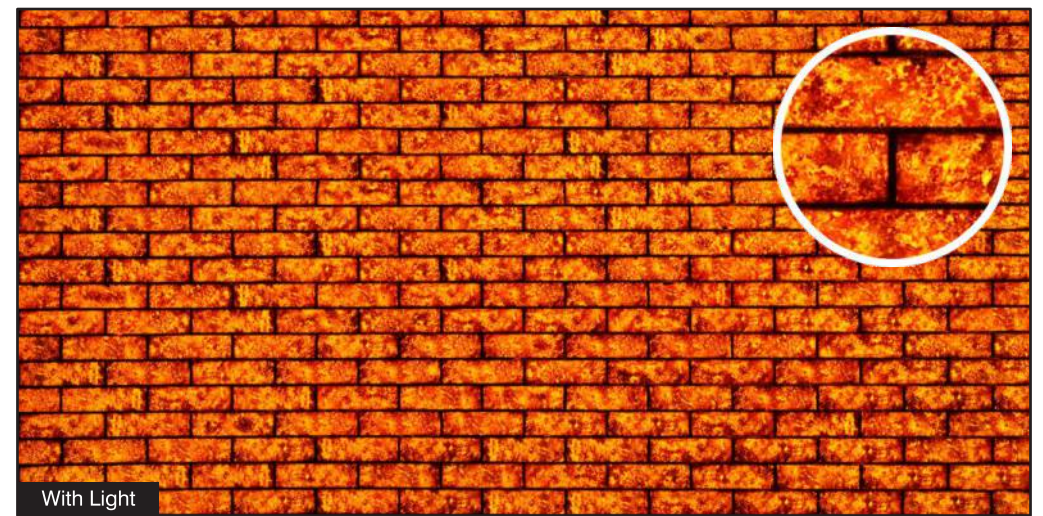
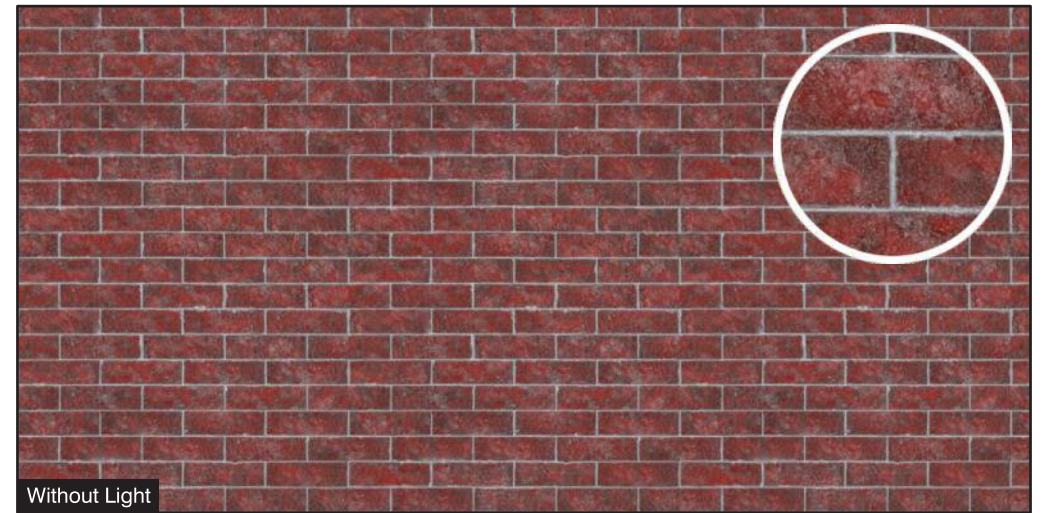
BR-01

Size:
4' x 8' (1220mm x 2440mm)
(+/- 5mm)

Thickness:
Approx **4mm**

- Natural Feel
- Rustic Surface

Living Room



BR-02

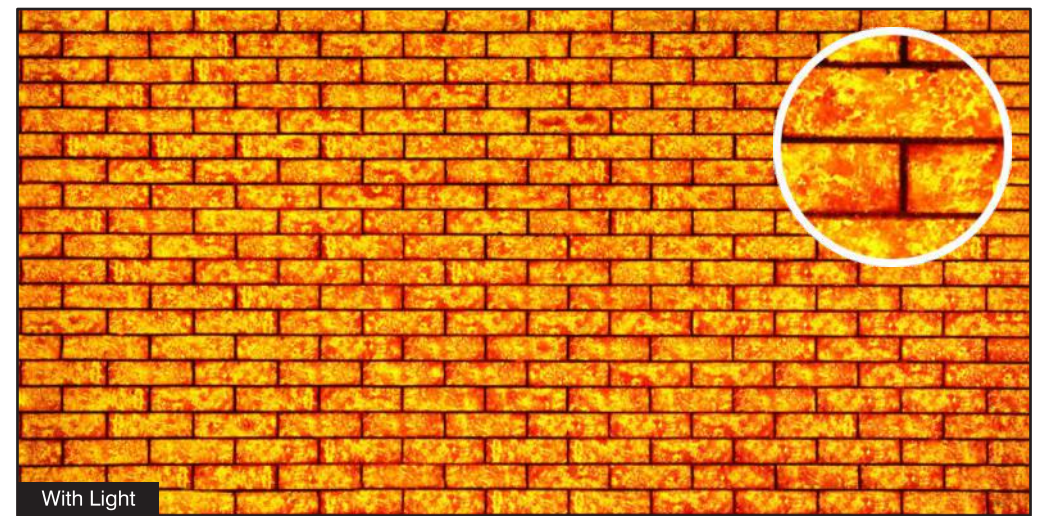
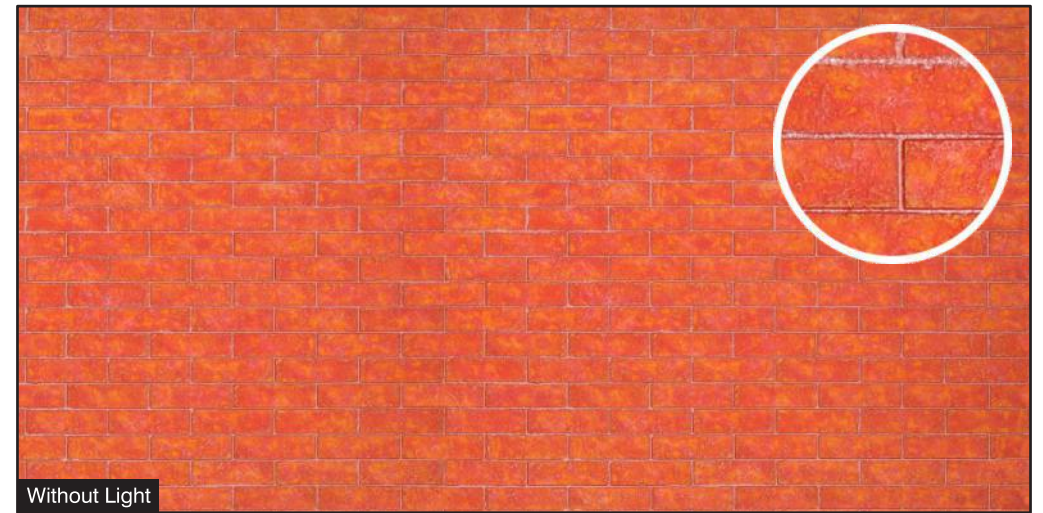
Size:
4' x 8' (1220mm x 2440mm)
(+/- 5mm)

Thickness:
Approx **4mm**

- Natural Feel
- Rustic Surface



Staircase



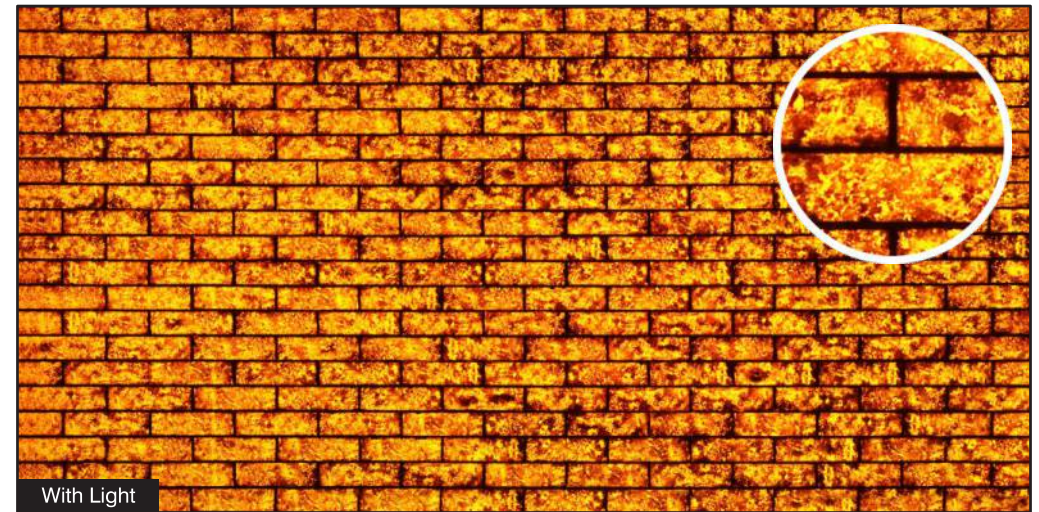
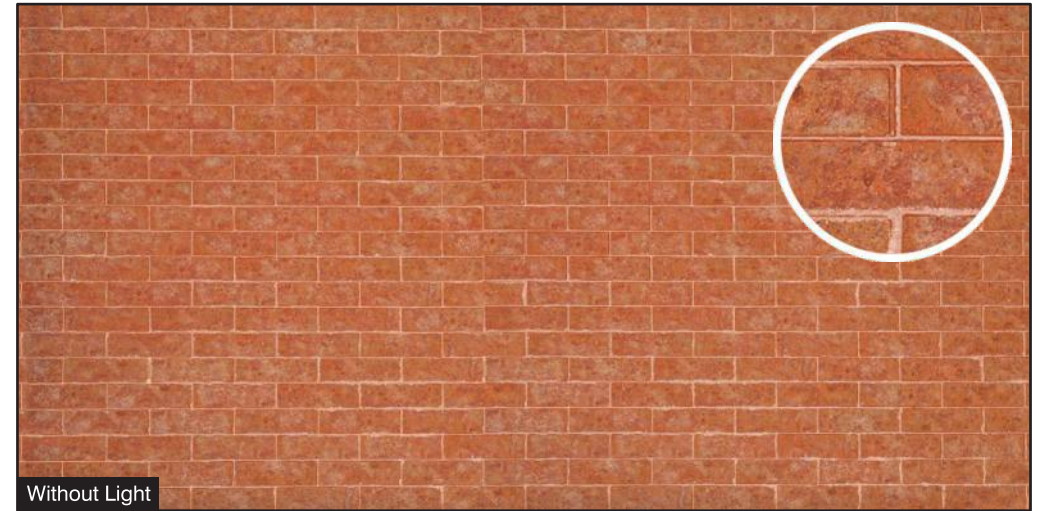
BR-03

Size:
4' x 8' (1220mm x 2440mm)
(+/- 5mm)

Thickness:
Approx **4mm**

- Natural Feel
- Rustic Surface

Lift



BR-04

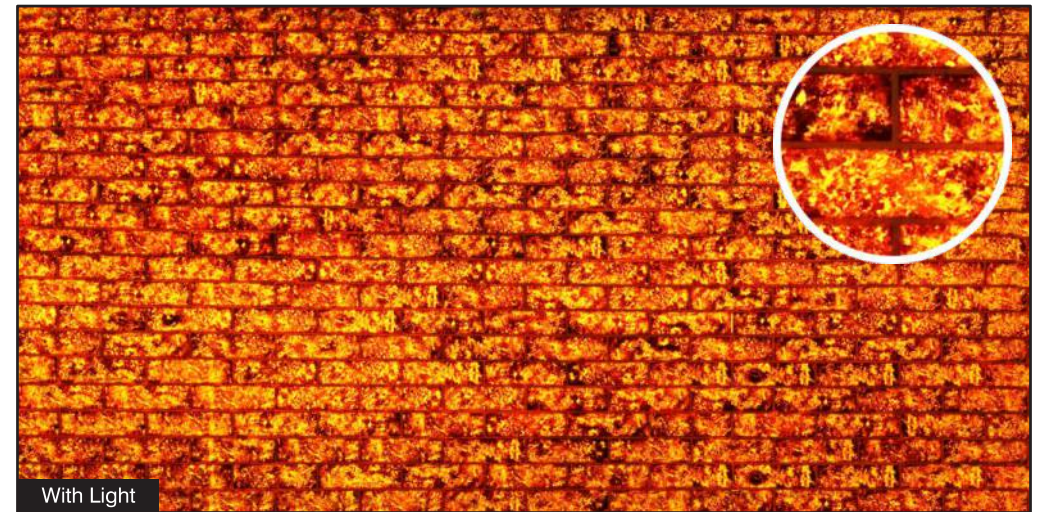
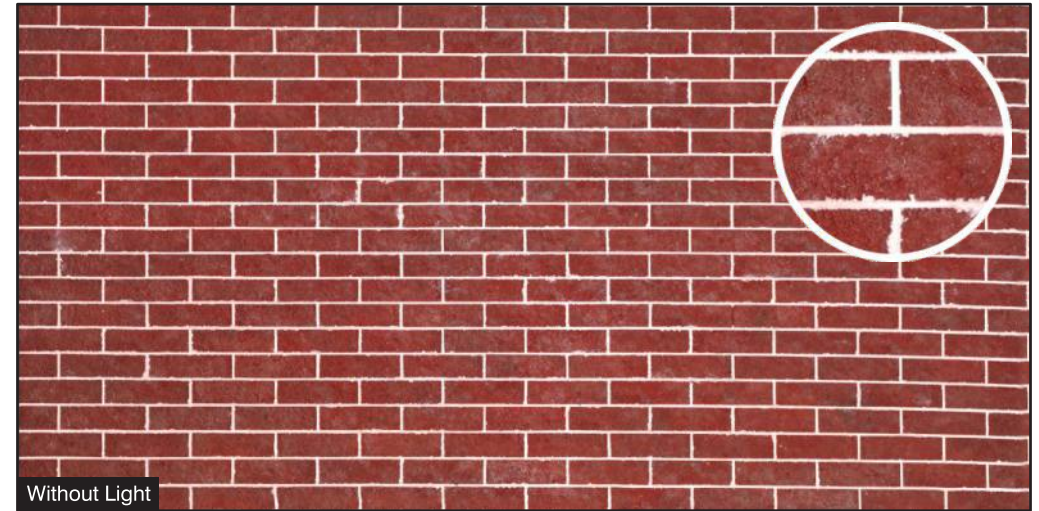
Size:
4' x 8' (1220mm x 2440mm)
(+/- 5mm)

Thickness:
Approx **4mm**

- Natural Feel
- Rustic Surface



Resort



BR-05

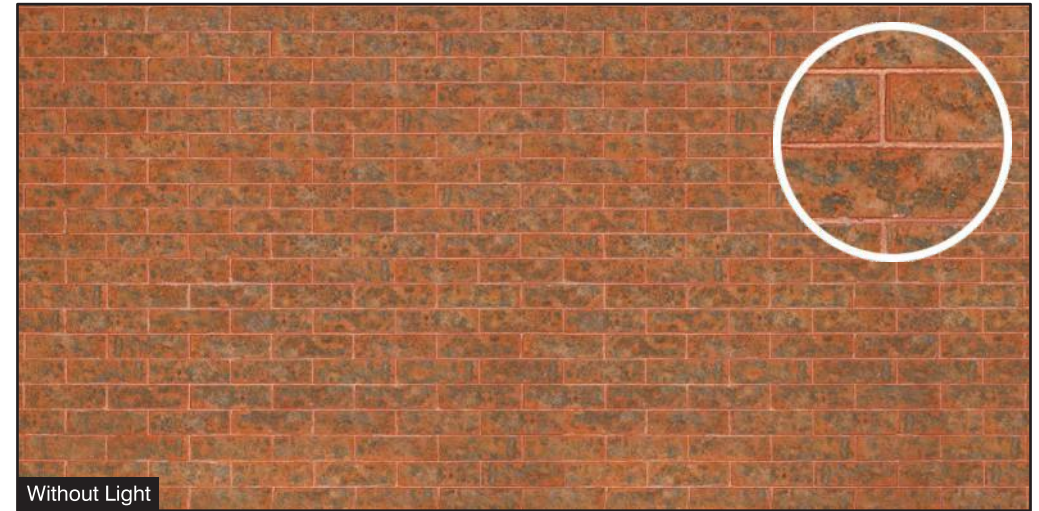
Size:
4' x 8' (1220mm x 2440mm)
(+/- 5mm)

Thickness:
Approx **4mm**

- Natural Feel
- Rustic Surface



Living Room



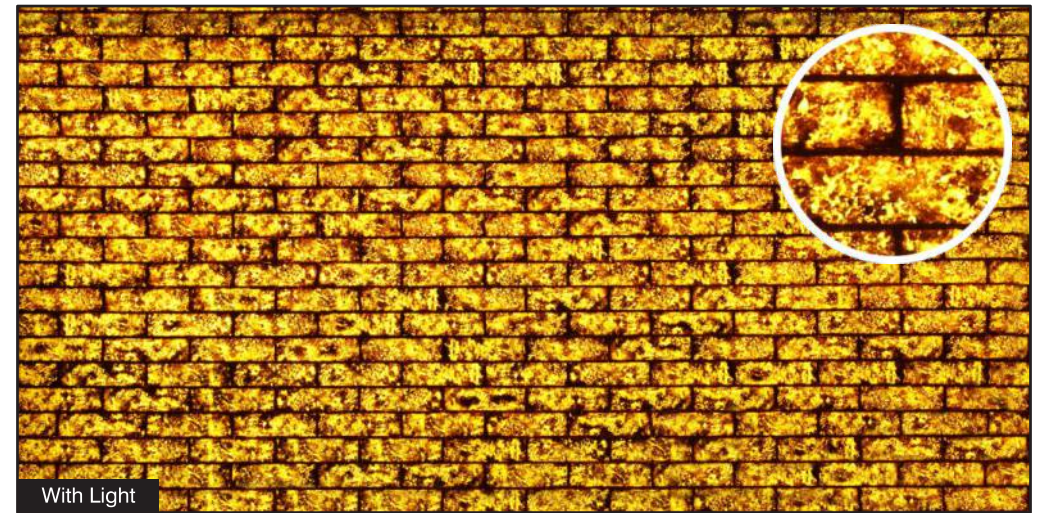
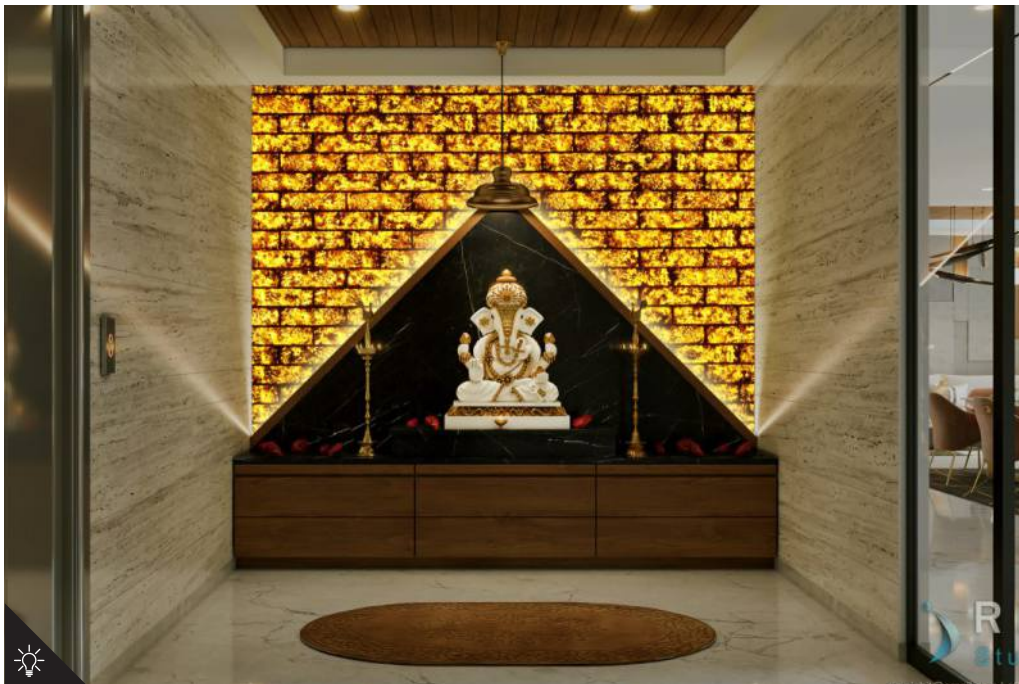
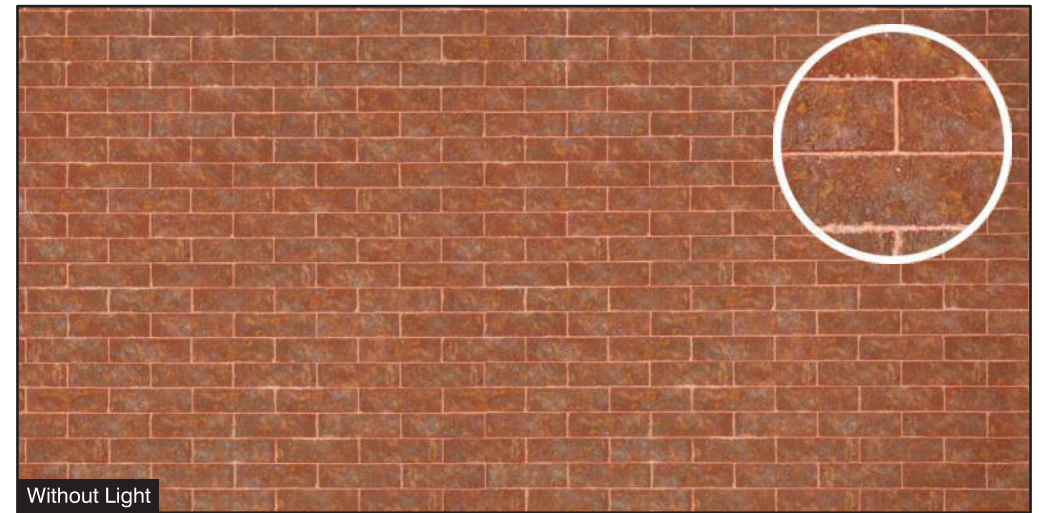
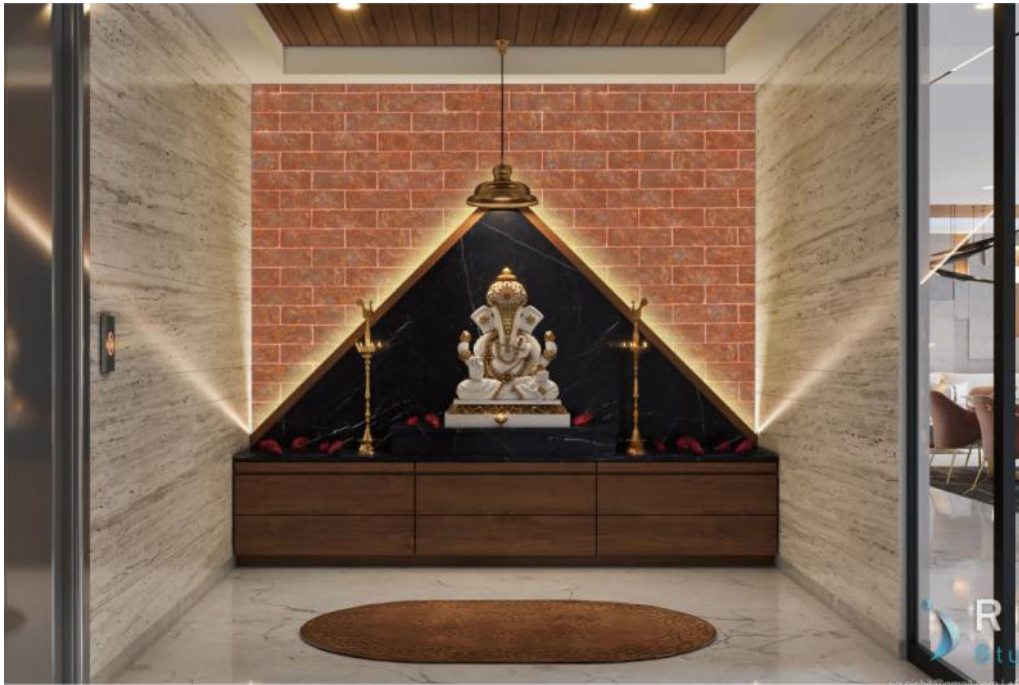
BR-06

Size:
4' x 8' (1220mm x 2440mm)
(+/- 5mm)

Thickness:
Approx **4mm**

- Natural Feel
- Rustic Surface

Puja Room



BR-07

Size:
4' x 8' (1220mm x 2440mm)
(+/- 5mm)

Thickness:
Approx **4mm**

- Natural Feel
- Rustic Surface

Living Room



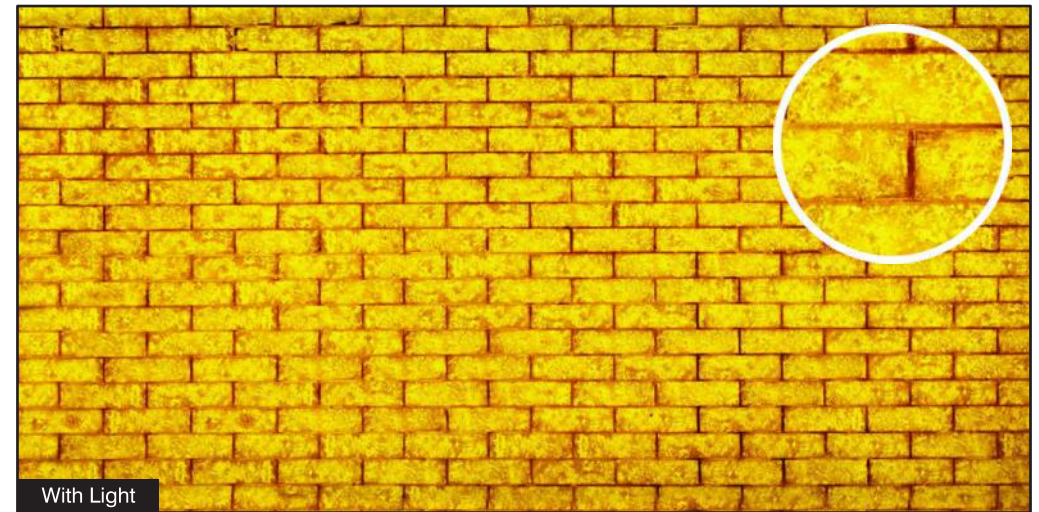
BR-08

Size:
4' x 8' (1220mm x 2440mm)
(+/- 5mm)

Thickness:
Approx **4mm**

- Natural Feel
- Rustic Surface

Resort Room



BR-09

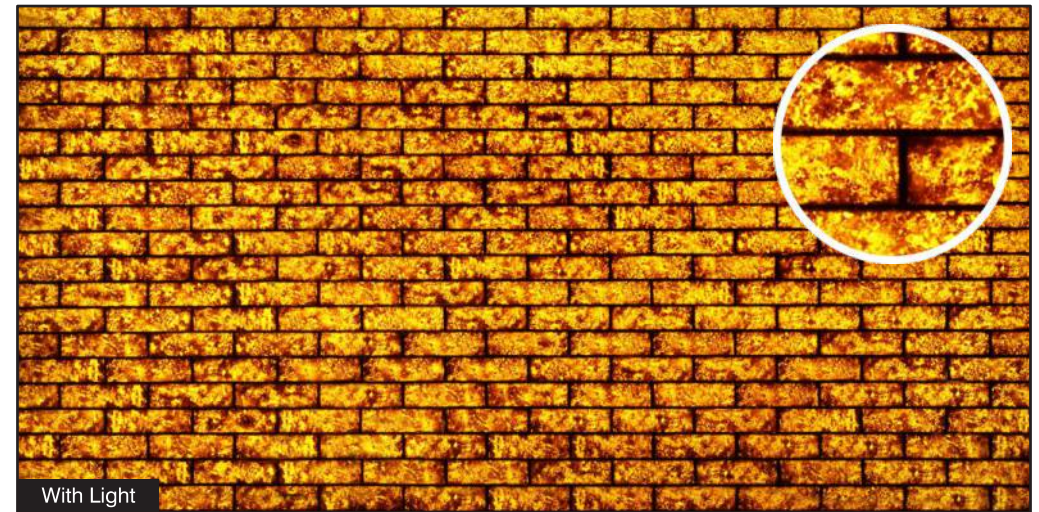
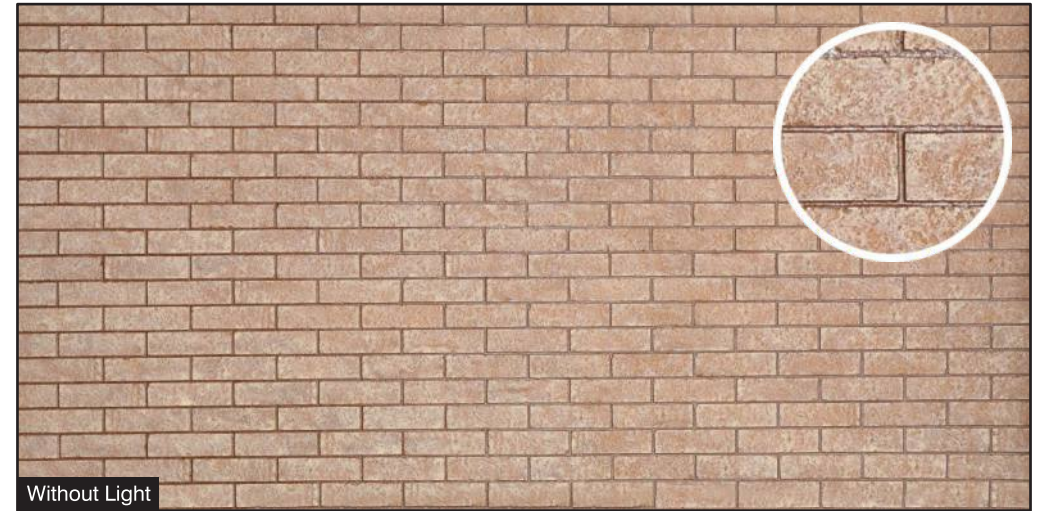
Size:
4' x 8' (1220mm x 2440mm)
(+/- 5mm)

Thickness:
Approx **4mm**

- Natural Feel
- Rustic Surface



Villa



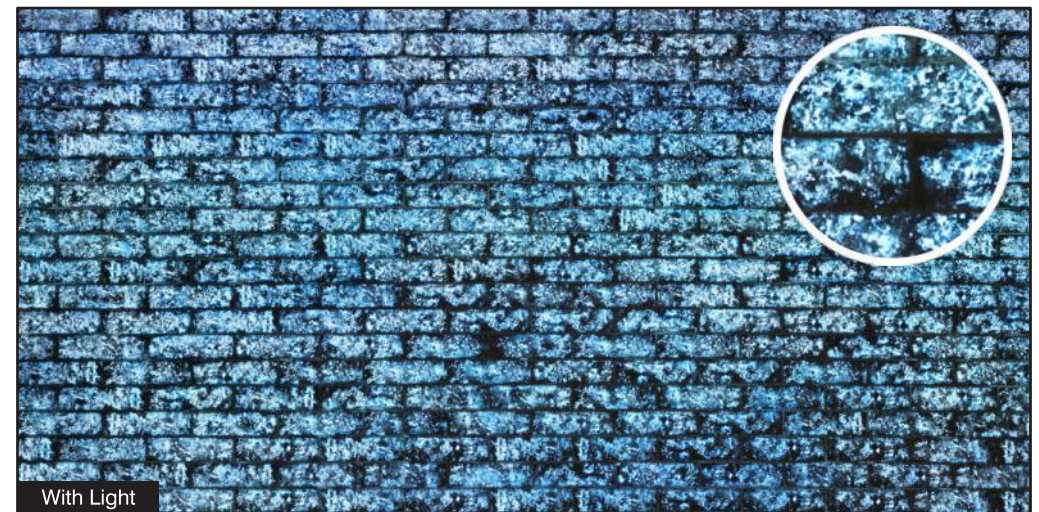
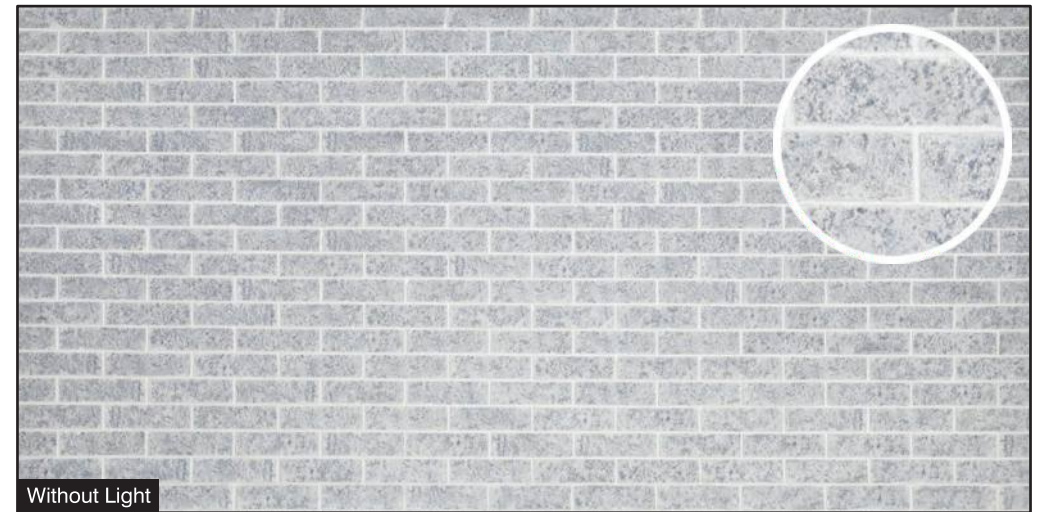
BR-10

Size:
4' x 8' (1220mm x 2440mm)
(+/- 5mm)

Thickness:
Approx **4mm**

- Natural Feel
- Rustic Surface

Library



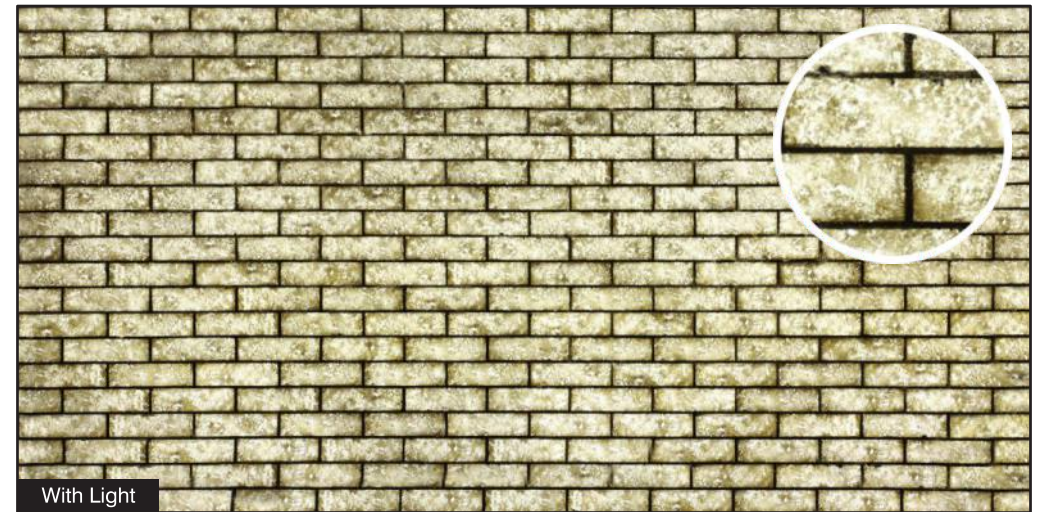
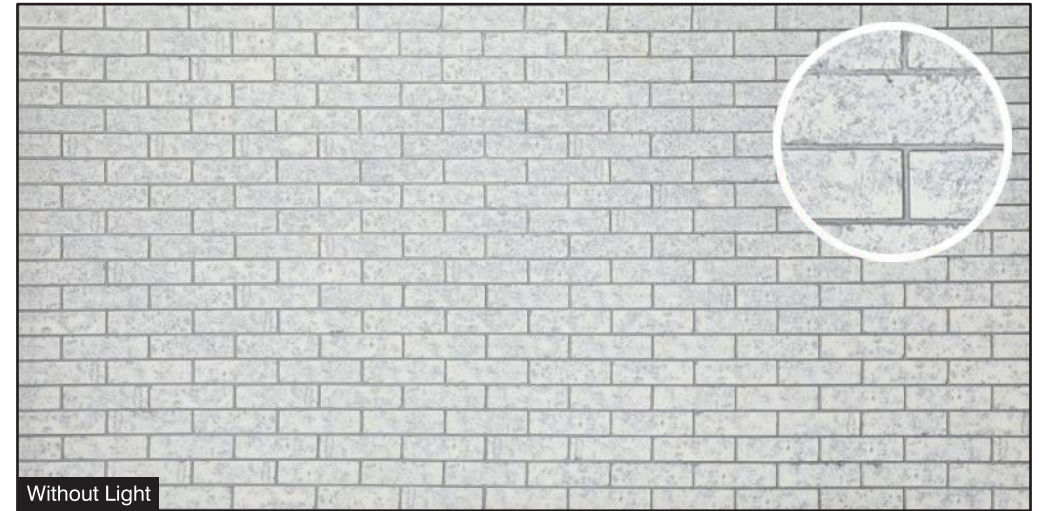
BR-11

Size:
4' x 8' (1220mm x 2440mm)
(+/- 5mm)

Thickness:
Approx **4mm**

- Natural Feel
- Rustic Surface

Bathroom



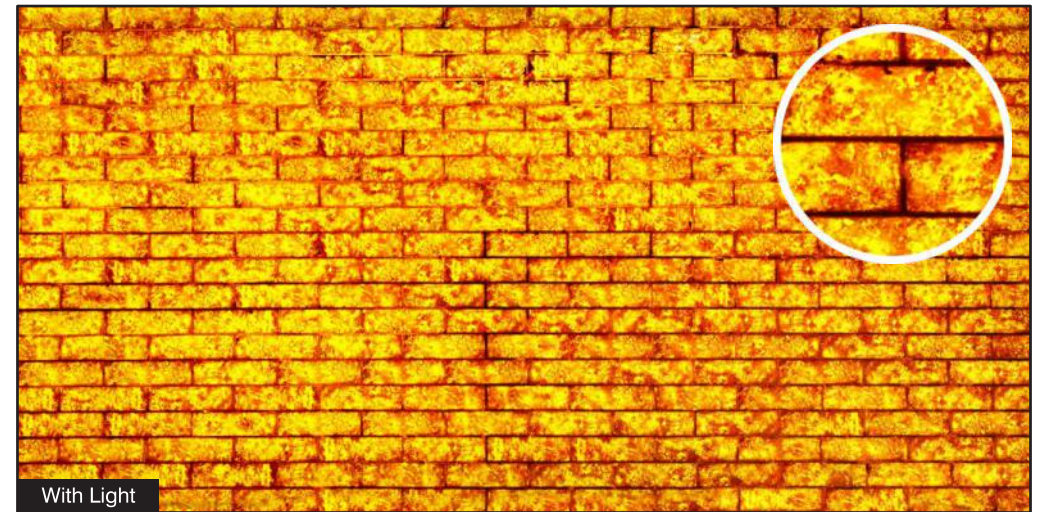
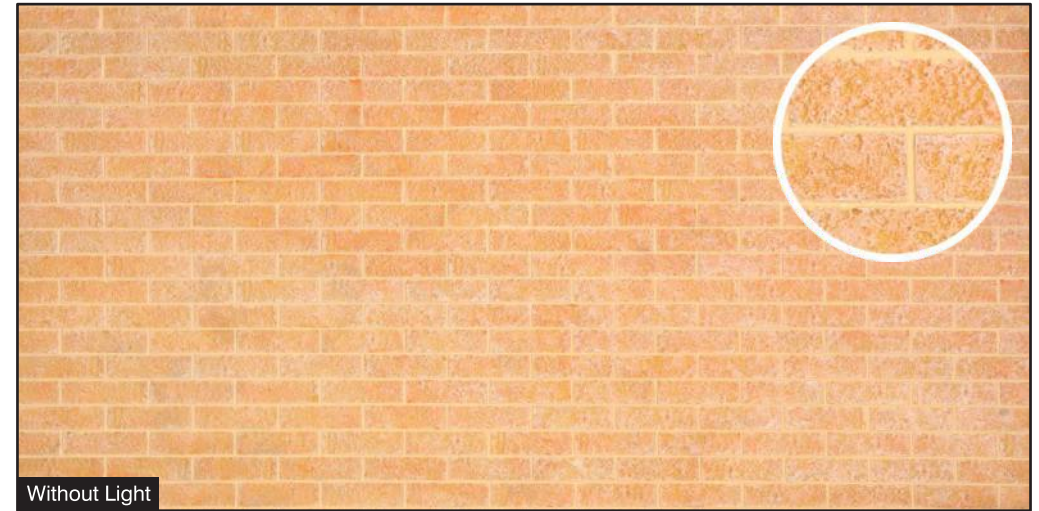
BR-12

Size:
4' x 8' (1220mm x 2440mm)
(+/- 5mm)

Thickness:
Approx **4mm**

- Natural Feel
- Rustic Surface

Compound Wall



BR-13

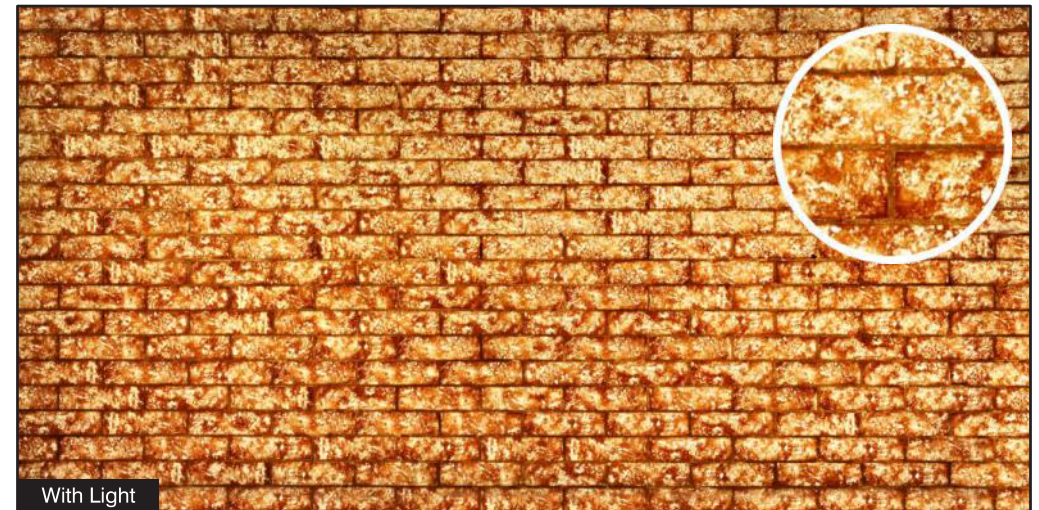
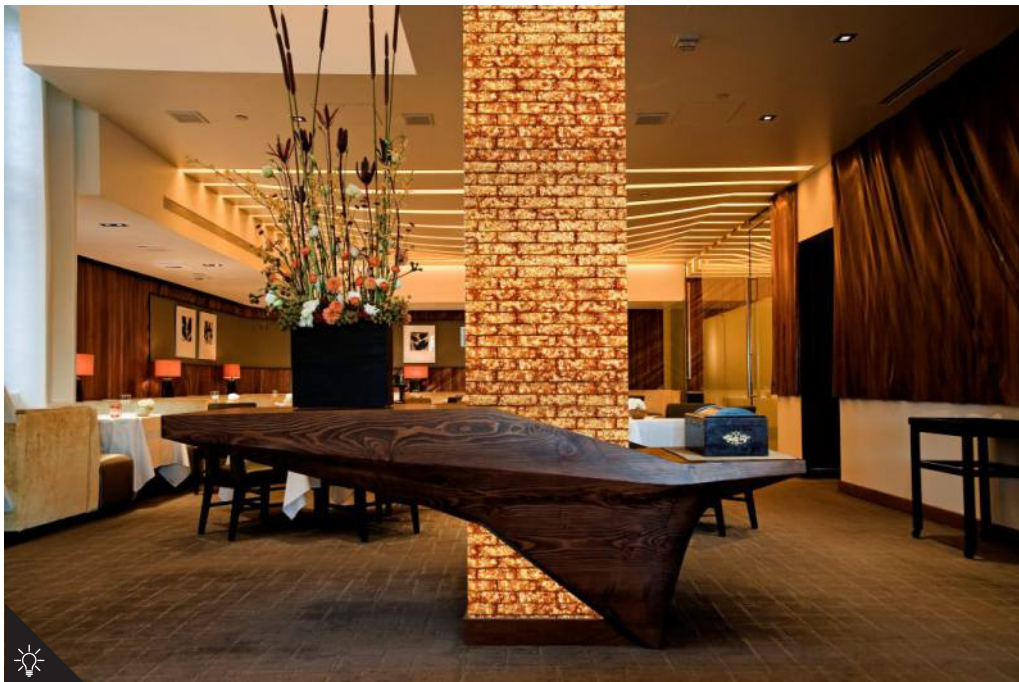
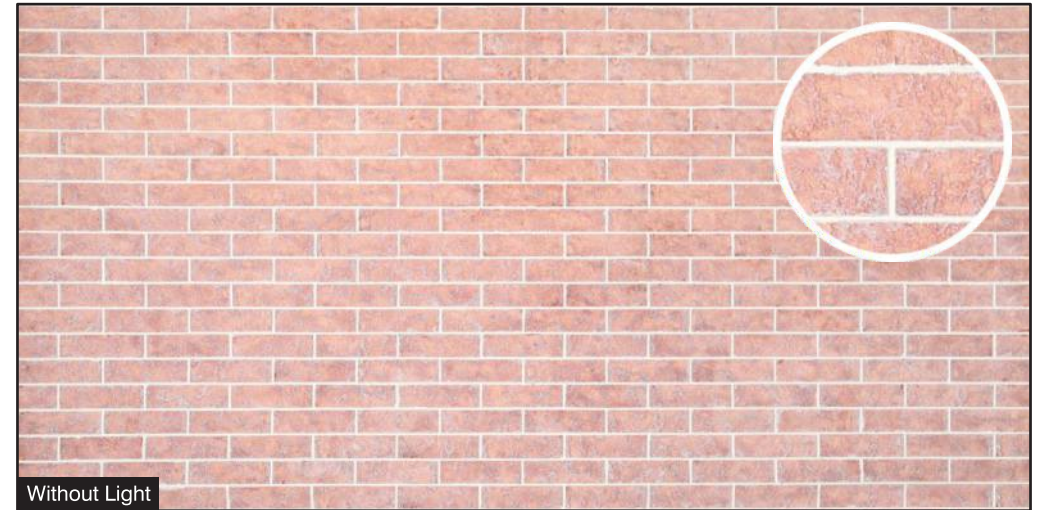
Size:
4' x 8' (1220mm x 2440mm)
(+/- 5mm)

Thickness:
Approx **4mm**

- Natural Feel
- Rustic Surface



Dining Room



BR-14

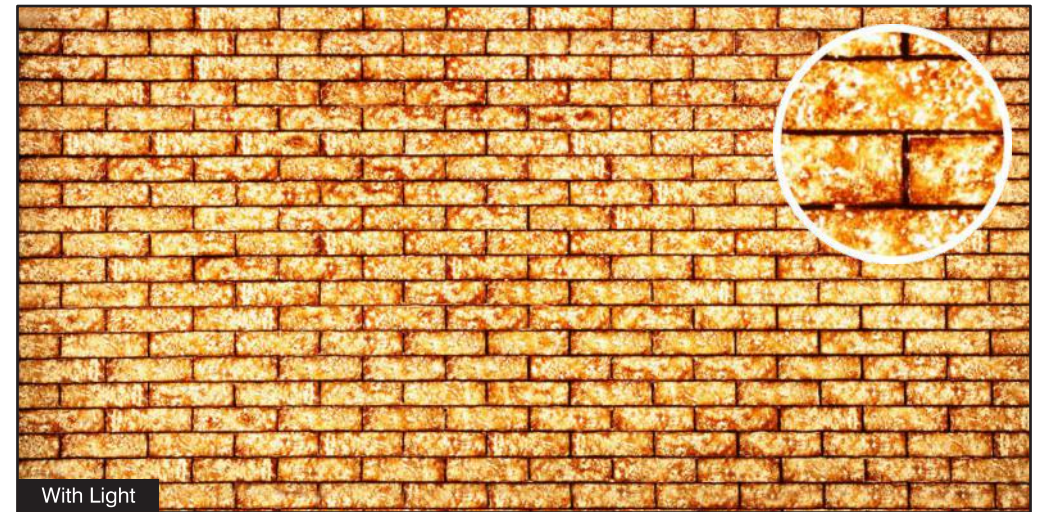
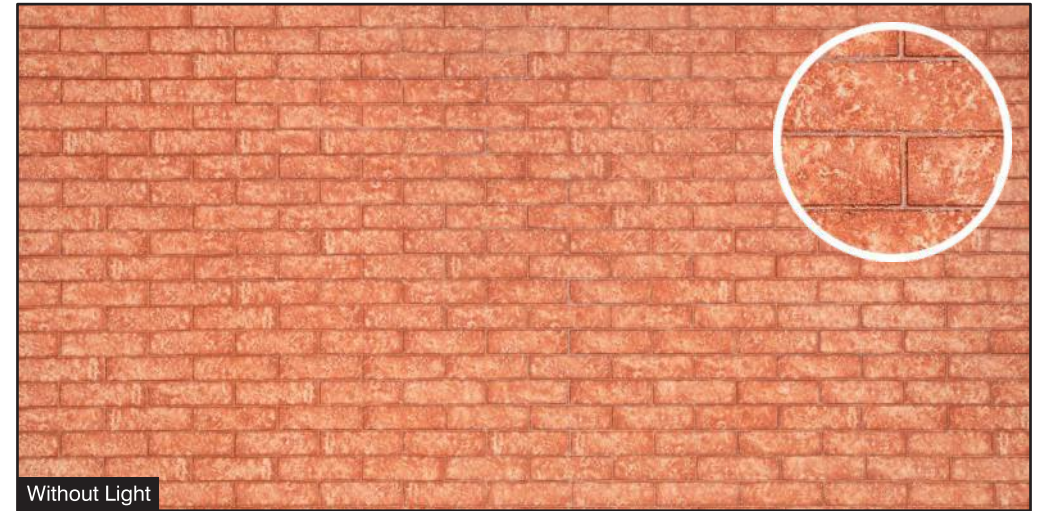
Size:
4' x 8' (1220mm x 2440mm)
(+/- 5mm)

Thickness:
Approx **4mm**

- Natural Feel
- Rustic Surface



Kitchen



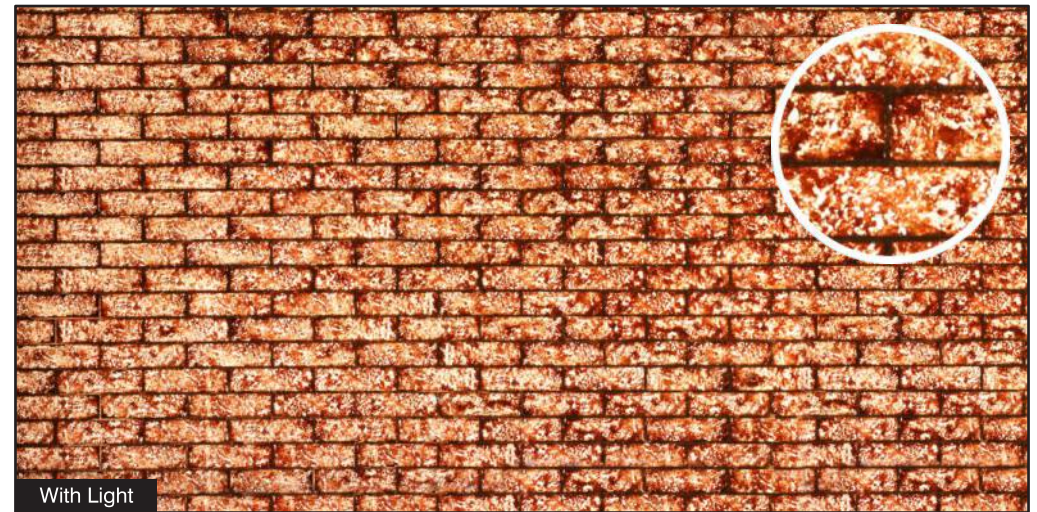
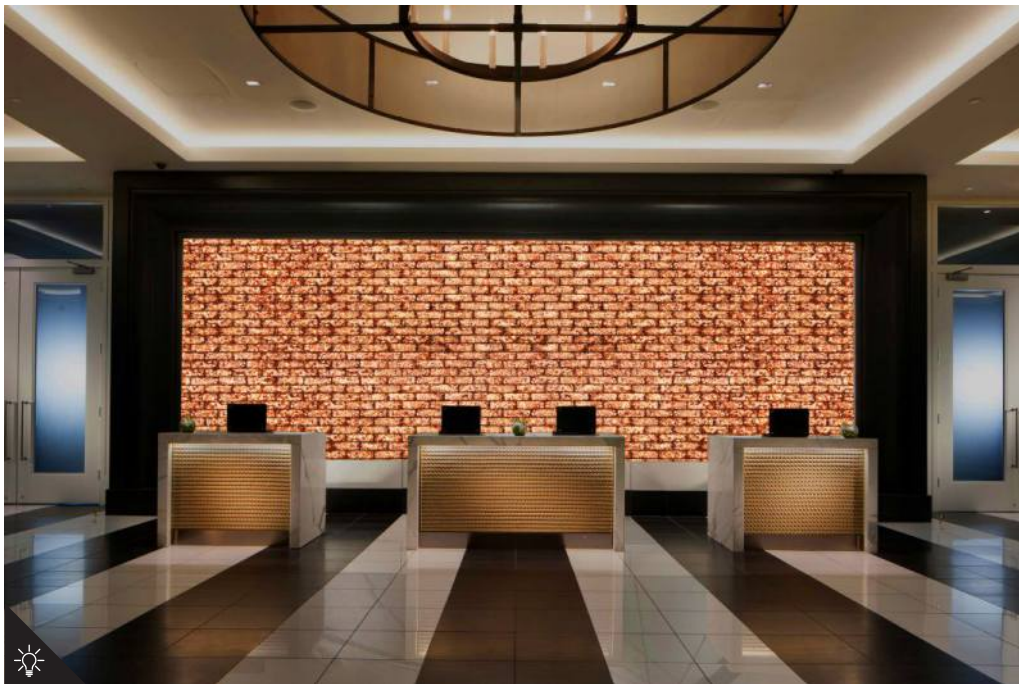
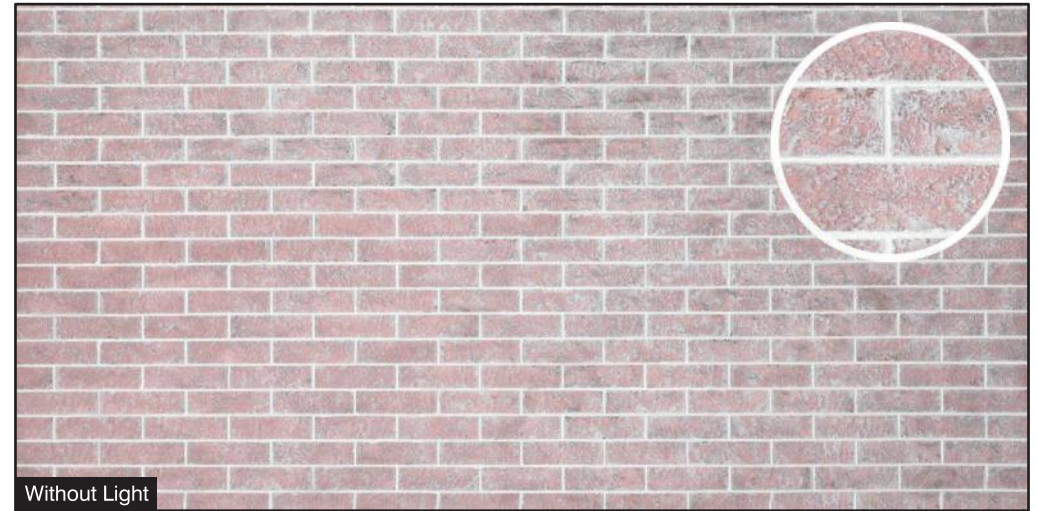
BR-15

Size:
4' x 8' (1220mm x 2440mm)
(+/- 5mm)

Thickness:
Approx **4mm**

- Natural Feel
- Rustic Surface

Reception Backdrop



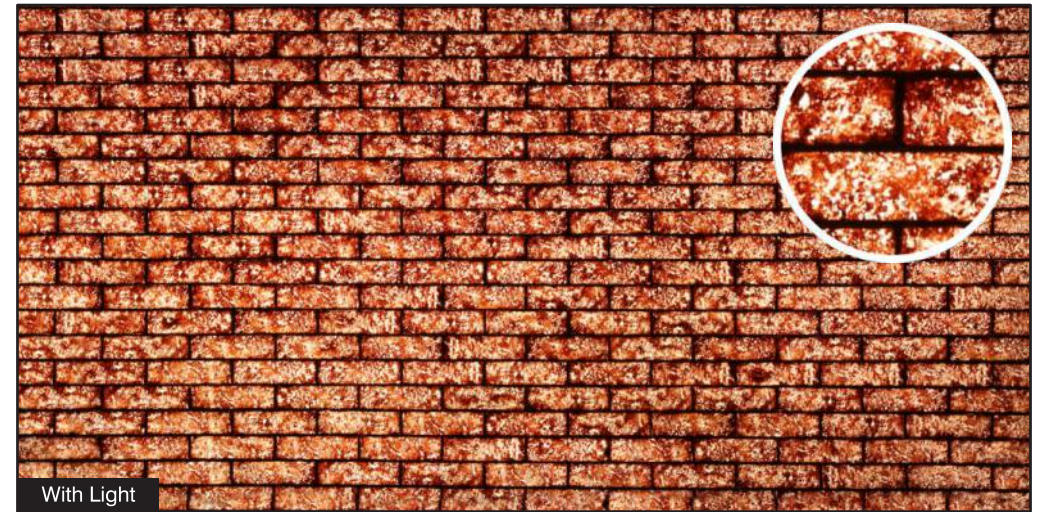
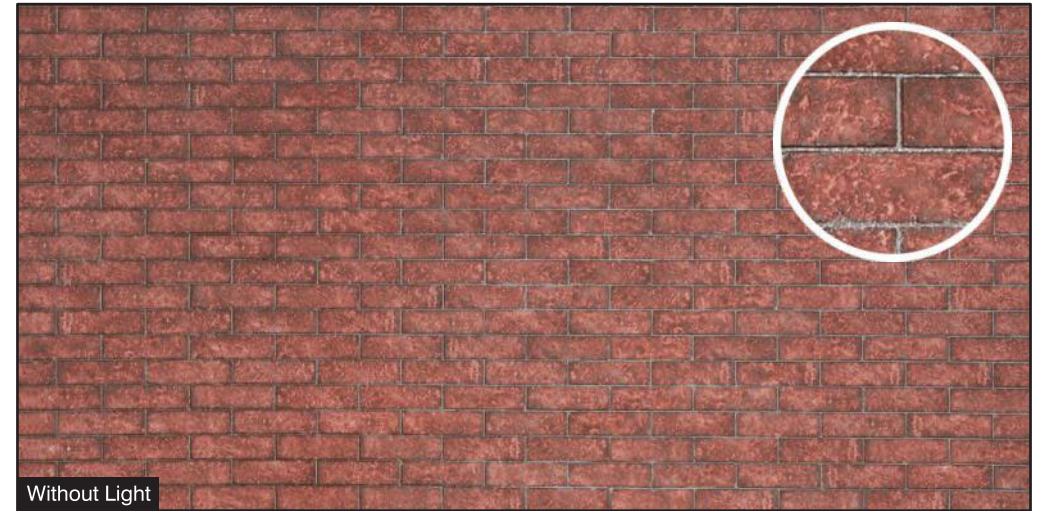
BR-16

Size:
4' x 8' (1220mm x 2440mm)
(+/- 5mm)

Thickness:
Approx **4mm**

- Natural Feel
- Rustic Surface

Building Exterior



BR-17

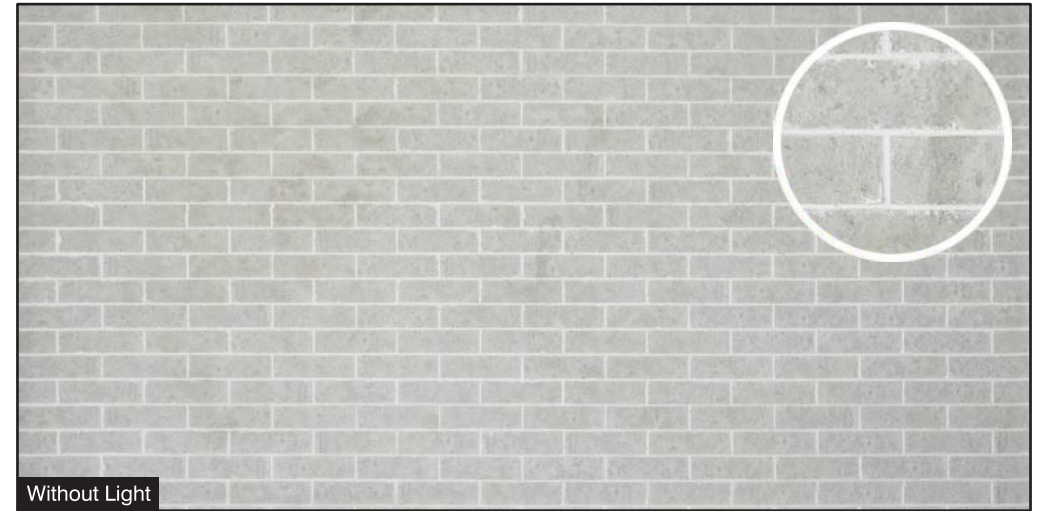
Size:
4' x 8' (1220mm x 2440mm)
(+/- 5mm)

Thickness:
Approx **4mm**

- Natural Feel
- Rustic Surface



Hotel Exterior



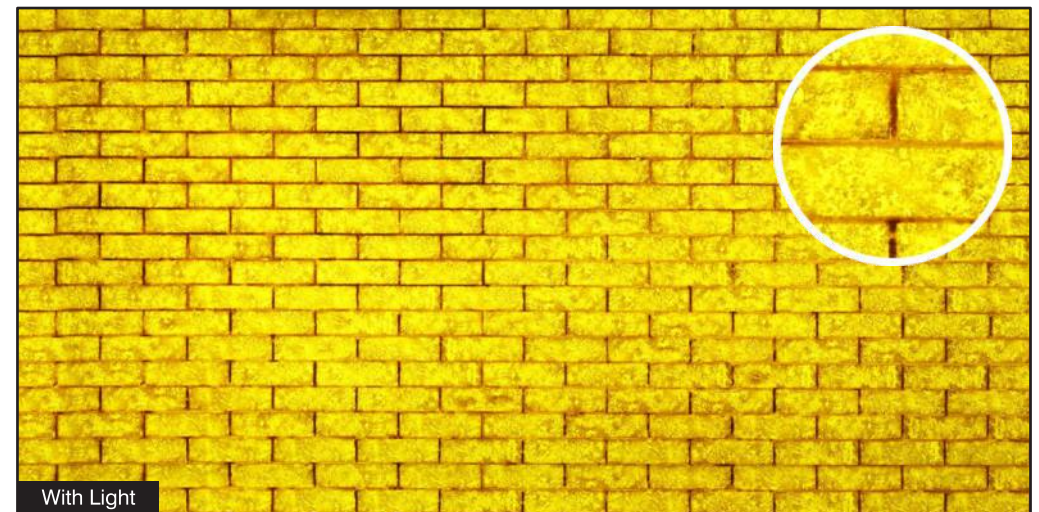
BR-18

Size:
4' x 8' (1220mm x 2440mm)
(+/- 5mm)

Thickness:
Approx **4mm**

- Natural Feel
- Rustic Surface

Bungalow



BR-19

Size:
4' x 8' (1220mm x 2440mm)
(+/- 5mm)

Thickness:
Approx **4mm**

- Natural Feel
- Rustic Surface



Apartment



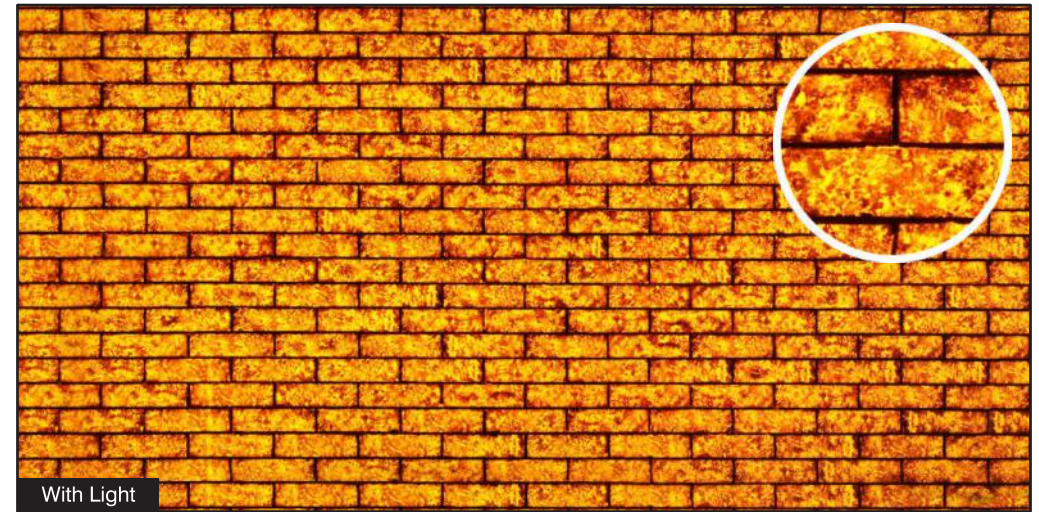
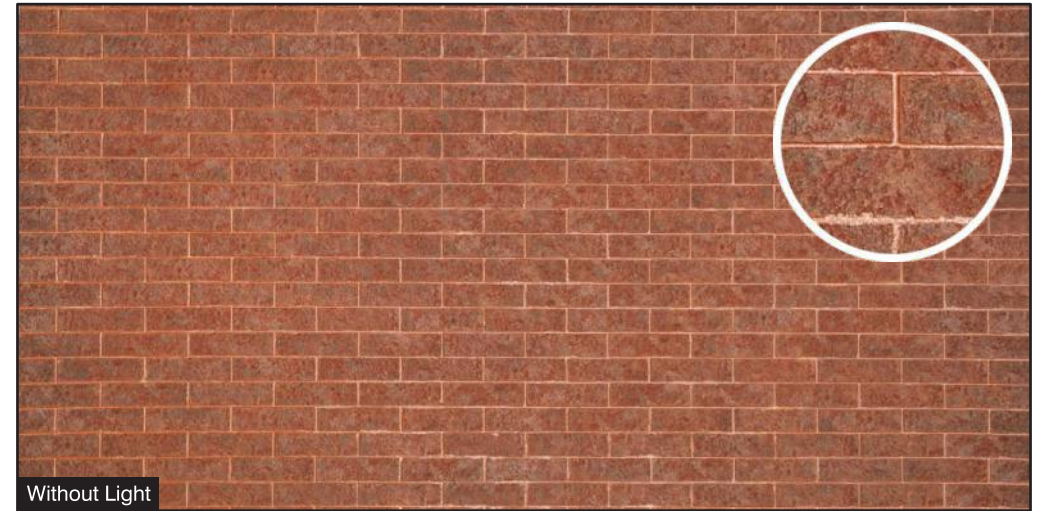
BR-20

Size:
4' x 8' (1220mm x 2440mm)
(+/- 5mm)

Thickness:
Approx **4mm**

- Natural Feel
- Rustic Surface

Bungalow



BR-21

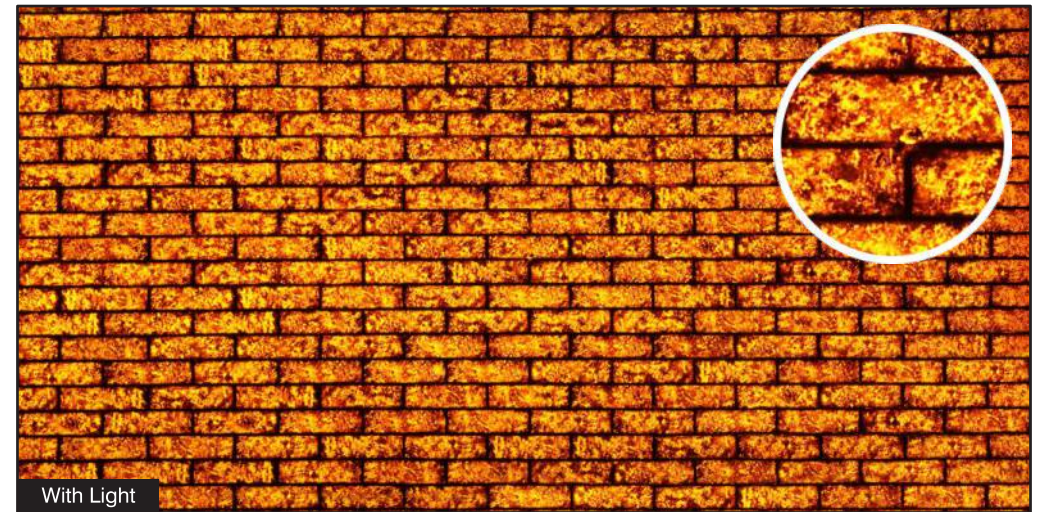
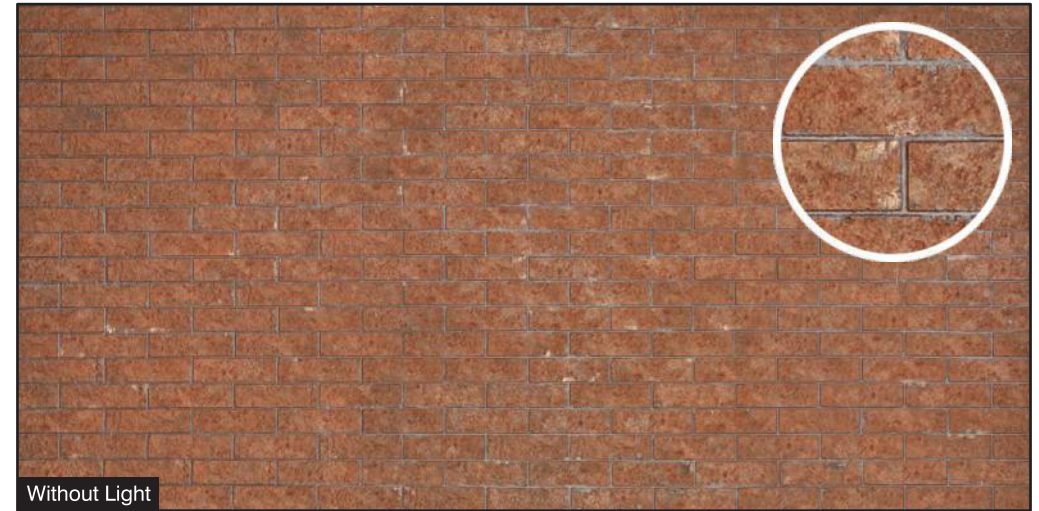
Size:
4' x 8' (1220mm x 2440mm)
(+/- 5mm)

Thickness:
Approx **4mm**

- Natural Feel
- Rustic Surface



Society Gate



BR-22

Size:
4' x 8' (1220mm x 2440mm)
(+/- 5mm)

Thickness:
Approx **4mm**

- Natural Feel
- Rustic Surface

DECONYX is made by high molecular polyester resin. It looks like a natural stone and is not as expensive as them. It is easy to operate which makes it extremely popular worldwide. The best characteristics of DECONYX is that it can transmit light and has various styles and design to choose from. It has the advantages of being bend , seamless joint process and is non breakable

Specifications of DECONYX

Standard size: 4' x 8' (Approx) AR Series: 2' x 8' (Approx)

Thickness: 4mm, 5mm, 7-8mm (Depending on Series & Pattern)

Range of application:

Decorative wall panel, bar top, table top, light-through structure, translucent walls, ceilings, bar tables, lamps, columns of commercial buildings and household decoration purpose.

Performance of Landscape stone products:

Possessing the natural texture of marbles, smoothness of ceramics and the elasticity of lumber, Deconyx Series could be processed without joints. Besides, they offer many designs to choose and are easy to clean and convenient to fix. Scientific tests verify that Deconyx series have neither radioactive pollution nor toxic side effects. So far, these environmental friendly stones have been widely applied into various kinds of decoration projects.

Process and installation of Landscape stone products:

Easy to fabricate & install. Can fabricate on the spot. Wood-cutting saw or marble-cutting saw for cutting, hand drill machine for hole-drilling, router machine for edge chamfering & bending by heat.

The Photographs just show the partial effect. Its colour, effect and veins are not absolutely the same. Please see the samples for original colour & effect to avoid confusions. All designs are random.

Colour Variations upto 5-10% is possible as per different batch of production.

Thickness: 4mm, 5mm & 7-8mm **Recommended Cutter Blade**

Recommended Glue for Joints: Resibond Clear

Araldite Clear

Silicone Clear

Recommended Glue for Pasting: Resibond

Araldite

Bondtite

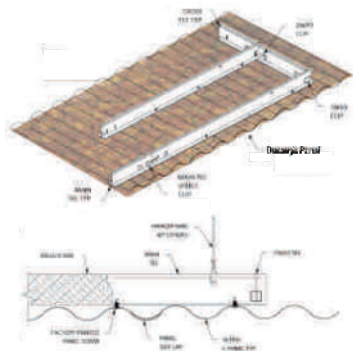


No.	Inspected areas	Unit	Standard	Result	Conclusion
1	Density	g/cm	≥ 1.2	1.4	Qualified
2	Hygroscopic Capacity	%	≥ 0.4	0.05	Qualified
3	Stretching Strength	Mpa	≥ 15.0	38	Qualified
4	Compressed Pressure	Mpa	≥ 20.0	100 MPa Unbroken	Qualified
5	Flexural Ability	Mpa	≥ 10.0	68.2	Qualified
6	Hardness	Degree	≥ 80.0	88	Qualified
7	Heat Resistance	-----	Put it into 100°C boiling water for 1Hr no bubbles appears	Pass	Qualified
8		-----	No obvious change in color	Pass	Qualified
9	Cigarette Burn Resistance	-----	No marks left behind but colors slightly turn in yellow (put the burning cigarette on the surface 60 sec)	Pass	Qualified
10	Acidity Resistance	-----	(Permeated in 30% hydrochloric acid for 24 hrs) no obvious change for appearance	Pass	Qualified
11	Alkalinity Resistance	-----	N(Permeated in 10% alkali for 24 hrs) no obvious change for appearance	Pass	Qualified
12	Stain Resistance	-----	Tea stains, coffee stains and ink can be cleaned easily by normal cleaning detergent (maintain the stings on product surface 24 hrs)	Pass	Qualified
13	Radioactivity	1ra	Out 1. Building Material	0.99	Pass
14	Radioactivity	lr	1. Out 1. Building Material ≥ 1.0 2. Decoration Material ≥ 1.3	0.77	Pass

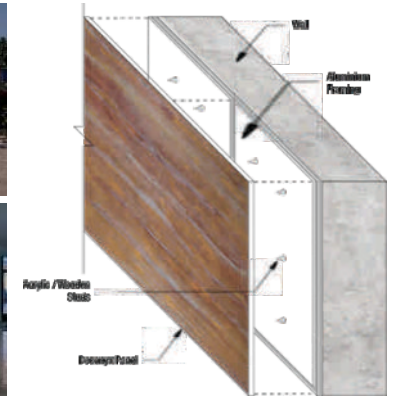
Panel Installation Guide

Ceilings

Deconyx panels supported with wooden frame structure



Wall Cladding / Column / Beam



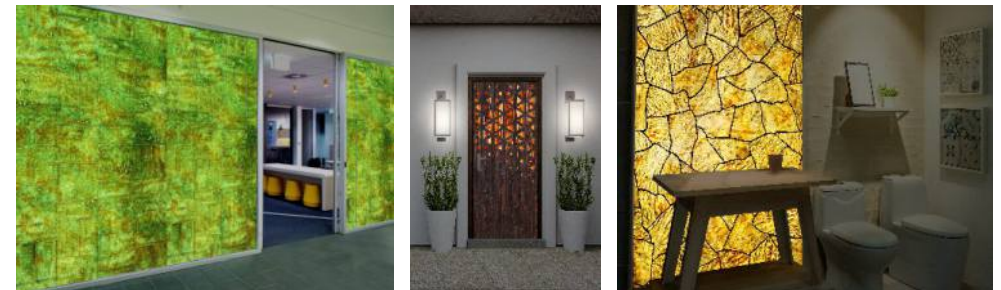
Back Light Panels

Allow backspace of 2.5 to 3 inches between the Deconyx sheet & Light panel. Amount of space behind the sheet may vary with different types of light and its application.



Furniture

Deconyx panels can be used for direct furniture installation using silicon binder with backlit applications.



Safety Precautions & Care :

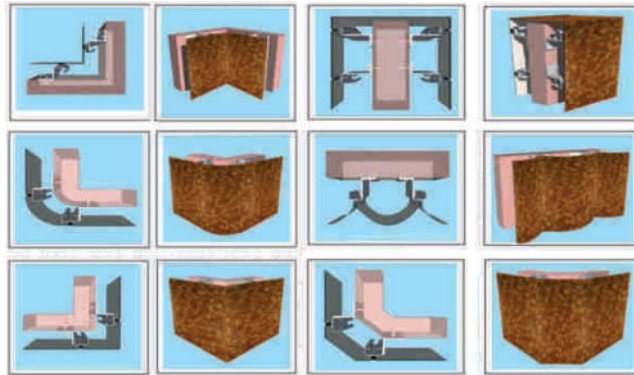
- Cut sheets in open area to avoid itching on body.
- After Cutting, Wash the sheets with water and Brush.
- Always wear Mask & Gloves while handling & installing the panels
- Keep sheets covered during any chemical application at site.
- For any kind of spot, clean with white cloth and ACETONE (Spirit).

Note : Slight Variations in Colours and Patterns gives natural look. We need to accept it practically .

Panel Installation Guide

Exterior Cladding

Exterior wall panels cladding with aluminium framing and backlit installation

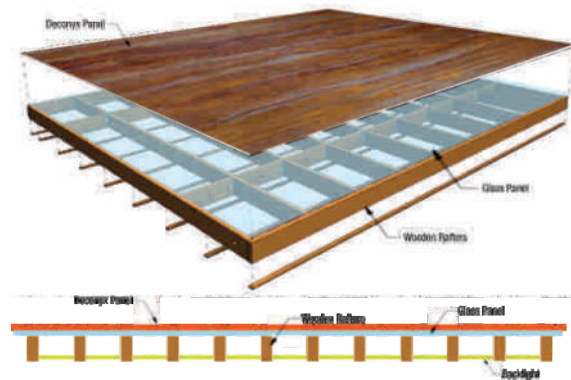


Flooring

Deconyx panels installation with silicon binding



Deconyx panels installation with wooden rafters and glass panel



NOTE:
BEFORE IMPLYING ANY METHOD OVER SHEET MAKE SURE TO TRY IT OVER A PIECE OF THE SHEET

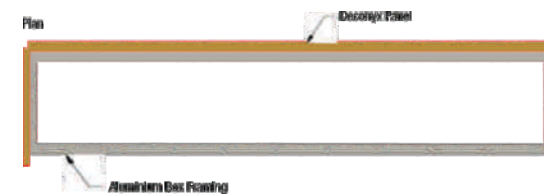
Sheet Bending Process

- Apply heat on both sides for easy bending
- Chamfering is a better and easy option for 90° attachment



Apply transparent silicone to
Join both pieces.

Signage Board



- CNC engraved Deconyx panel with aluminium framing
- Backlit installation

- Installation similar to ACP panels
- Half-cut groove can be used to fold the panel with heating process

Installations

- Exterior
- Interior
- CNC Work / Signage



JAMNAGAR (AR-1201)

Installations

- Exterior
- Interior
- CNC Work / Signage



Our New Products Coming Soon...

- Natural Stone Sinks
- Natural stone Mirrors
- Natural Stone Vanity Counters
- Bathtub
- Bathroom Accessories



**Vocal
For
Local**



DECONYXTM

TRANSLUCENT SHINE PANELS

Showroom :


215 Stellar, Sindhu Bhavan Road, Bodakdev, AHMEDABAD-380054.

Cell: +91 76210 00283 E-mail: ahd.deconyx@gmail.com

Godown :

A-11, Raheman Estate, Nr. Sukh Sagar Restaurant, Sarkhej-Sanand Chowkdi, Sarkhej,

AHMEDABAD-382210. Cell: +91 76210 00383 E-mail: ahd.deconyx@gmail.com

 +91 76210 00283 / 383

 officialdeconyx

 deconyx

 deconyx