

# VivreClad

ALUMINUM CLADDING FOR INTERIORS & EXTERIORS

ACP  
LOUVERS

&

ACP  
SIDING BOARDS



The 1st comprehensive range of panelling options for Exteriors  
from the house of

**vivre** PANELS

# WHY ALUCLAD?



## 100% Reinforced Core

AluClad is 100% Re-Inforced. This makes it significantly superior in strength & rigidity compared to other cladding materials such as WPC & PVC Soffit which are hollow.

## Natural Timber Finish

AluClad is finished with a high-performance Exterior-Grade wooden vinyl film on top. This is manufactured using special additives making it impervious to UV rays & all weather.

## A European Product

AluClad is made entirely using advanced European technology to make it the premier product for cladding in exteriors.



### NON WARPING

AluClad's aluminium is not only lighter, but stronger and straighter than real wood and will not warp over time.



### COLOUR STABILITY

All of our colours have been rigorously tested to withstand the most extreme environments.



### WEATHER RESISTANT

AluClad won't swell, grow mould or rust when exposed to wet conditions. Unlike wood, it is protected from corrosion.



### FIRE RESISTANT

AluClad is a fire resistant product and manufactured to meet relevant international fire standards.



### ECO FRIENDLY

AluClad uses VOC free coatings, lead free finishes and is 100% recyclable at the end of its life span.



### SCRATCH RESISTANT

The top layer of AluClad is baked on to provide resistance to chipping, flaking, blistering and scratching.



### INSECT PROOF

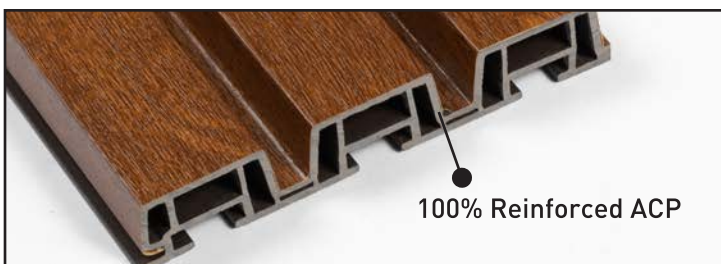
AluClad is impervious to termites and ants, and doesn't require chemical treatments to be protected from pests.



### LOW MAINTENANCE

Our specialised finishes have outstanding properties to ensure ease of maintenance and longevity of your surfaces.

# SPECIFICATIONS



100% Reinforced ACP

## AluClad Louvers

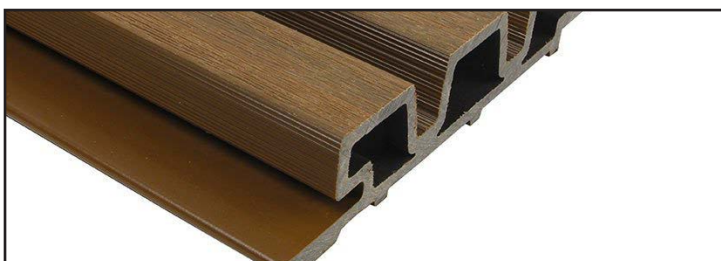
Core: ACP Composite Material  
Finish: Exterior-Grade PVC Membrane  
Height: 9 ft (2750 mm)  
Width: 5.31 inches (135 mm exactly)  
Thickness: 20 mm



100% Reinforced ACP

## AluClad Siding Board

Core: ACP Composite Material  
Finish: Exterior-Grade PVC Membrane  
Height: 9 ft (2750 mm)  
Width: 4.53 inches (115 mm exactly)  
Thickness: 16 mm



## WPC WoodClad

Core: Wood Plastic Composite (WPC)  
Finish: Co-extrusion WPC Layer  
Height: 9ft (2750mm)  
Width: 8.62 inches (219mm exactly)  
Thickness: 26mm

# AluClad: Louvers

Product Brochure



100% Reinforced ACP



VivreClad

AluClad Louvers



vivre  
PANELS

# AX 7: GOLDEN OAK

AluClad Louvers

HEIGHT	9 ft
WIDTH	135 mm
THICKNESS	20 mm



vivre  
PANELS

## AX 6: PLANKED WALNUT

AluClad Louvers

HEIGHT	9 ft
WIDTH	135 mm
THICKNESS	20 mm



vivre  
PANELS

## AX 8: SUPER BLACK

AluClad Louvers

HEIGHT	9 ft
WIDTH	135 mm
THICKNESS	20 mm

AluClad: Louvers  
Visualizer



AX 7: GOLDEN OAK



AX 6: PLANKED WALNUT



AX 8: SUPER BLACK



# AluClad: Siding Board

Product Brochure



100% Reinforced ACP



VivreClad  
AluClad Siding Board



ALUCLAD  
PANELS

## AW 9 SIBERIAN PINE

AluClad Siding Boards

HEIGHT	9 ft
WIDTH	114 mm
THICKNESS	16 mm



vivre  
PANELS

# AW 11 NATURAL TEAK

AluClad Siding Boards

HEIGHT	9 ft
WIDTH	114 mm
THICKNESS	16 mm



vivre  
PANELS

# AW 10 GOLDEN OAK

AluClad Siding Boards

HEIGHT	9 ft
WIDTH	114 mm
THICKNESS	16 mm

AluClad: Siding Board  
Visualizer



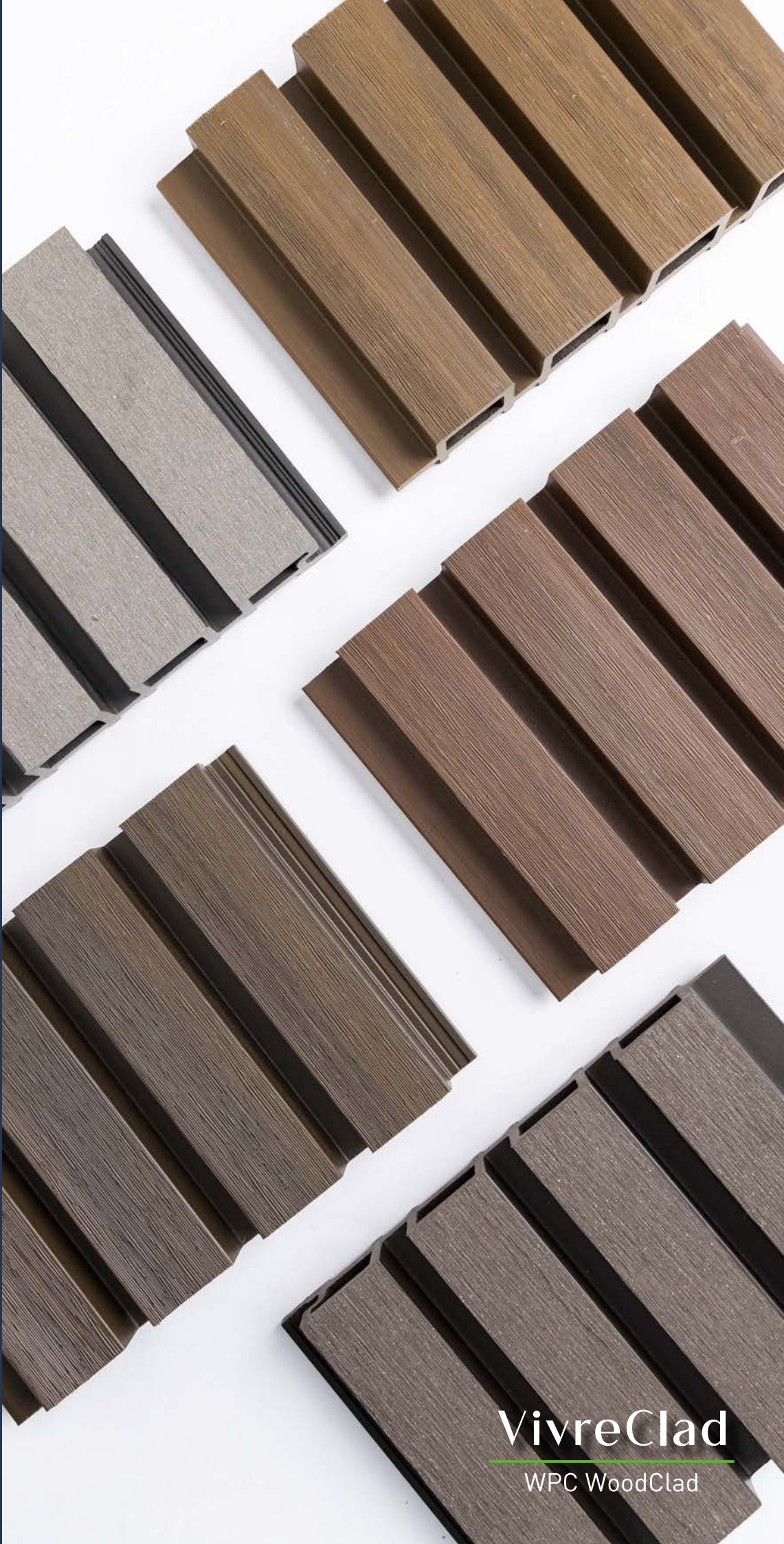
AW 9 SIBERIAN PINE



AW 11 NATURAL TEAK



AW 10 GOLDEN OAK



# WPC WoodClad

Product Brochure



VivreClad

WPC WoodClad





vivre  
PANELS

# VPEx 1: AFRICAN TEAK

WPC WoodClad

HEIGHT	9 ft
WIDTH	219 mm
THICKNESS	26 mm

vivre  
PANELS

# VPEX 2: BURMA TEAK

WPC WoodClad



HEIGHT	9 ft
WIDTH	219 mm
THICKNESS	26 mm

VPFX 3: WALNUT  
WPC WoodClad

vivre  
PANELS

HEIGHT	9 ft
WIDTH	219 mm
THICKNESS	26 mm



vive  
PANELS

# VPEx 4: SUPER MATT LIGHT GREY

WPC WoodClad

HEIGHT	9 ft
WIDTH	219 mm
THICKNESS	26 mm



# VPEx 5: SUPER MATT ENGLISH GREY

WPC WoodClad

HEIGHT	9 ft
WIDTH	219 mm
THICKNESS	26 mm



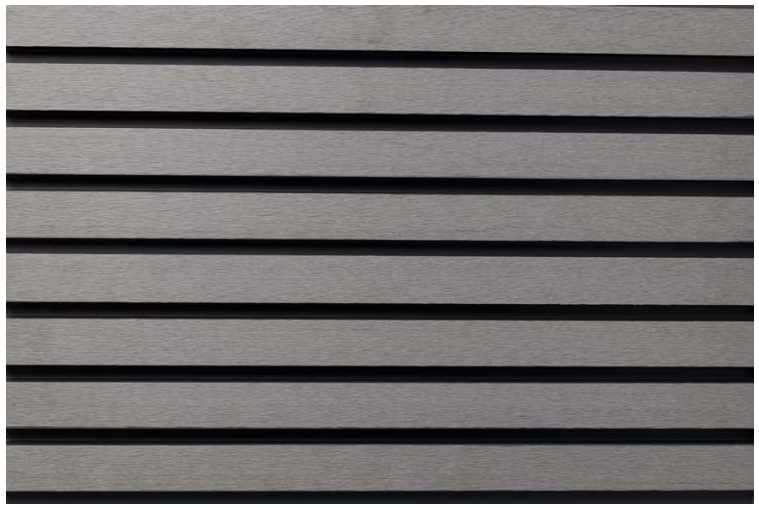
VPEX 1: AFRICAN TEAK



VPEX 2: BURMA TEAK



VPEX 3: WALNUT



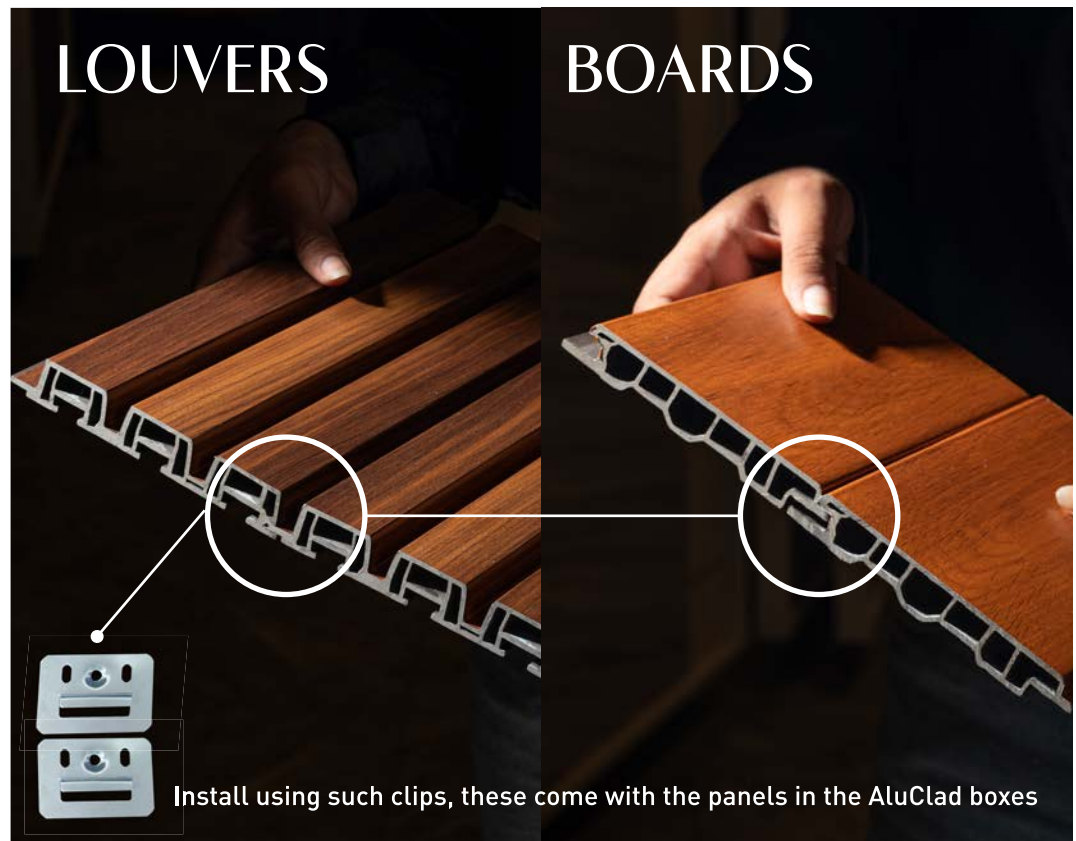
VPEX 4: SUPER MATT LIGHT GREY



VPEX 5: SUPER MATT  
ENGLISH GREY

# INSTALLATION GUIDE

AluClad

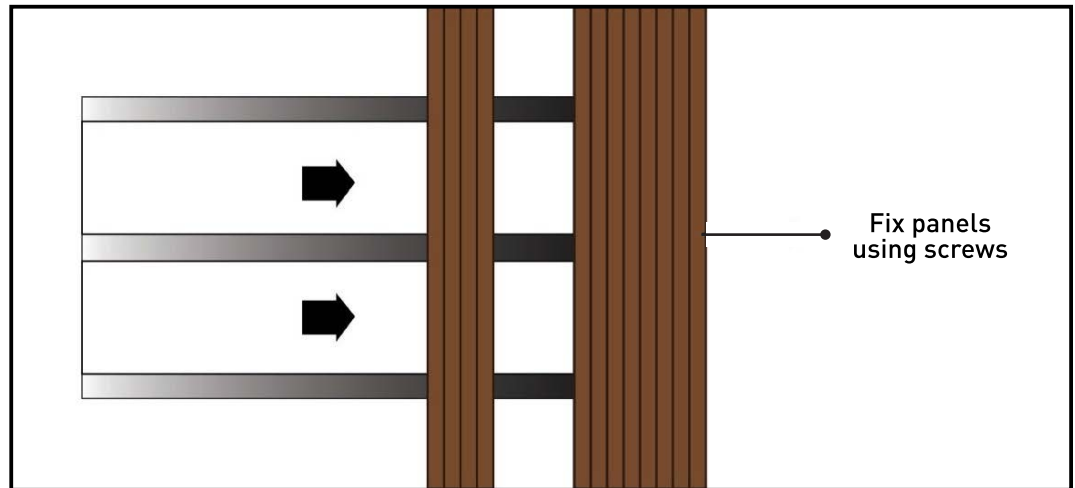
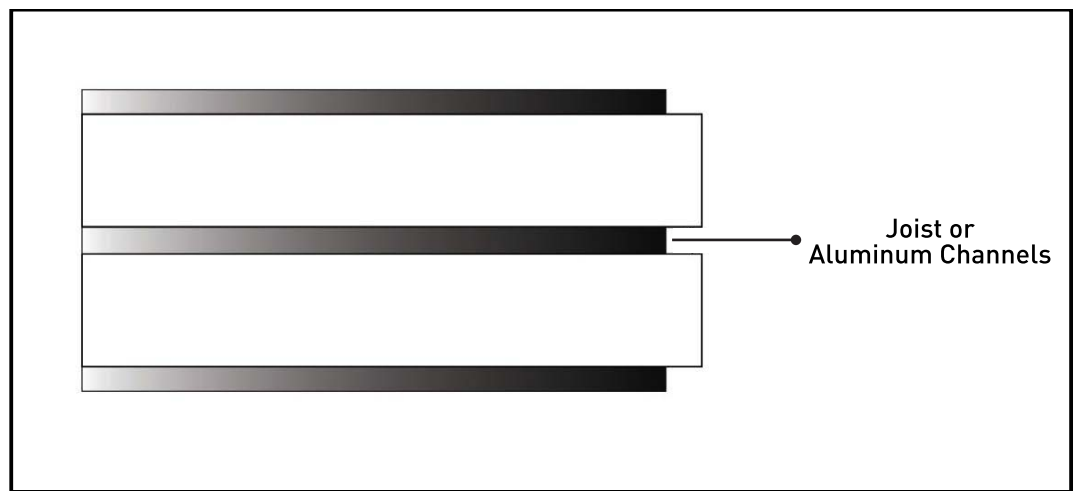


- If uneven, fix aluminum channels or joists at the area where the panels are to be applied at intermittent distances. If the surface is even, you may fix the panels directly.
- Place the first AluClad piece at the starting of the area to be paneled. There are installation clips provided inside the panel boxes. Take these clips out.
- Attach the clip to the underside of the AluClad panel and fix using a drywall screw. For each piece, use anywhere between 4 to 8 clips at intermittent distances.
- Place the second panel next to the first panel, in a manner where the sides of the panels interlock in a tongue-and-groove manner, similar to how charcoal louvers are interlocked.
- Attach the clip to the underside of the 2nd AluClad panel and fix using a drywall screw, just like how the first panel was fixed. Continue this till the all the panels are fixed.



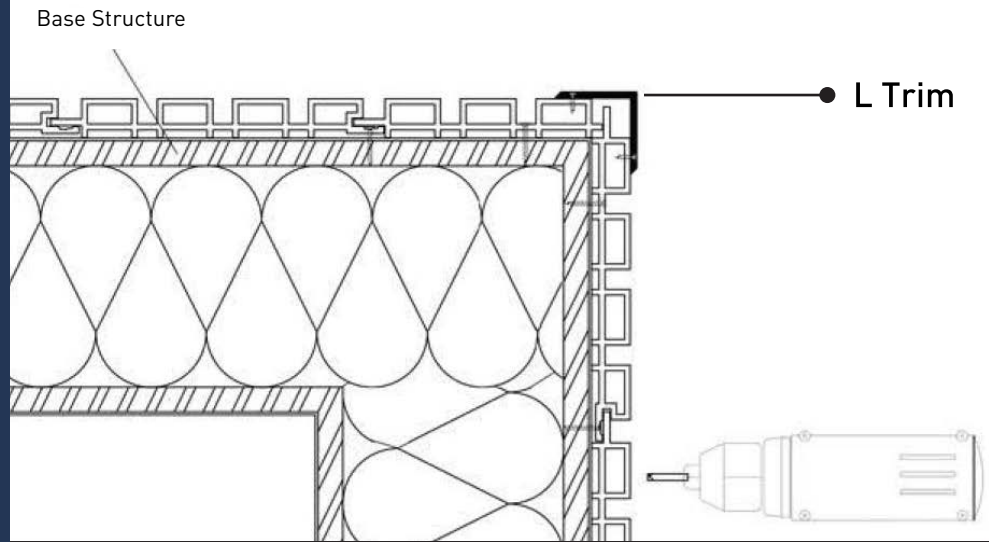
# INSTALLATION GUIDE

WPC WoodClad

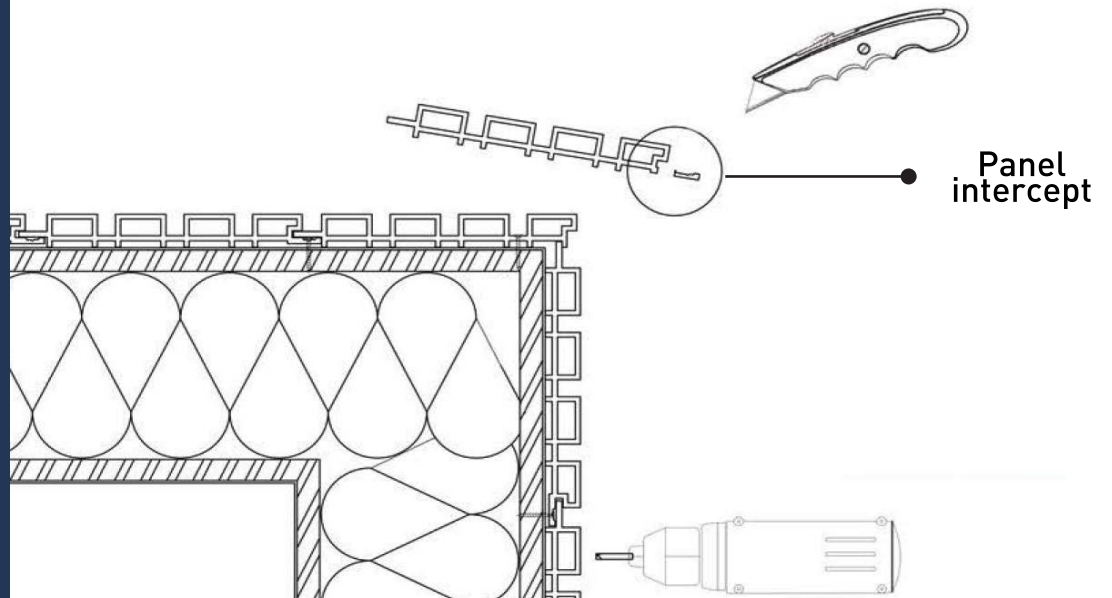


- If uneven, fix aluminum channels or joists at the area where the panels are to be applied at intermittent distances. If the surface is even, you may fix the panels directly.
- Place the first WoodClad piece at the starting of the area to be paneled.
- Using nails, fix the first WoodClad panel. For each piece, use anywhere between 4 to 8 nails at intermittent distances.
- Place the second panel next to the first panel, in a manner where the sides of the panels interlock in a tongue-and-groove manner, similar to how charcoal louvers are interlocked.
- Attach the clip to the underside of the 2nd WoodClad panel and fix using a drywall screw, just like how the first panel was fixed. Continue this till the all the panels are fixed.

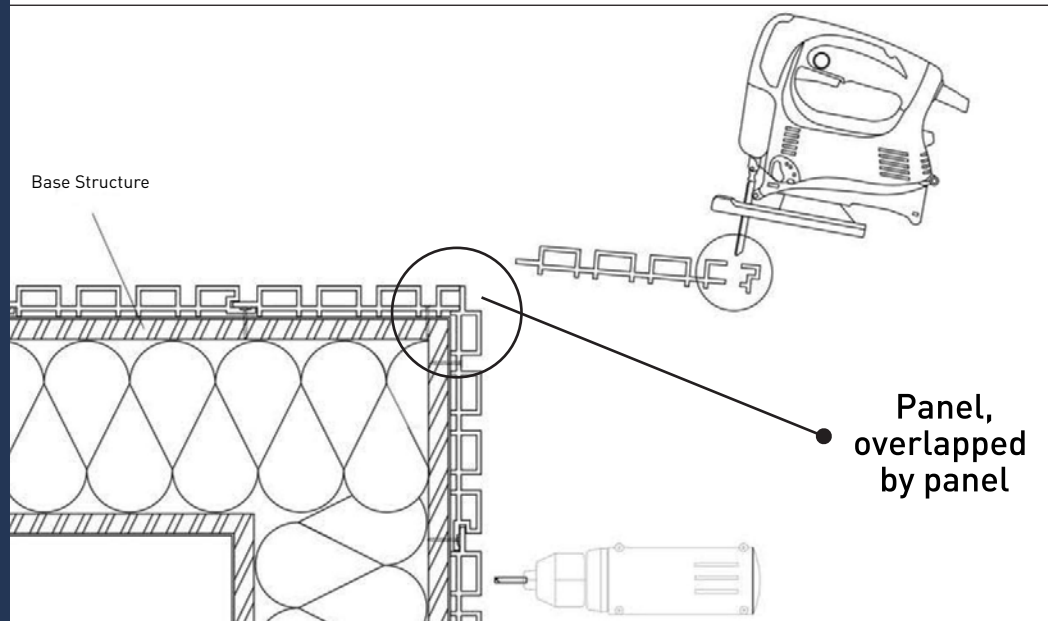
**INSTALLATION GUIDE - Corners**  
AluClad & WPC WoodClad



**Option 1: Using an L Trim**



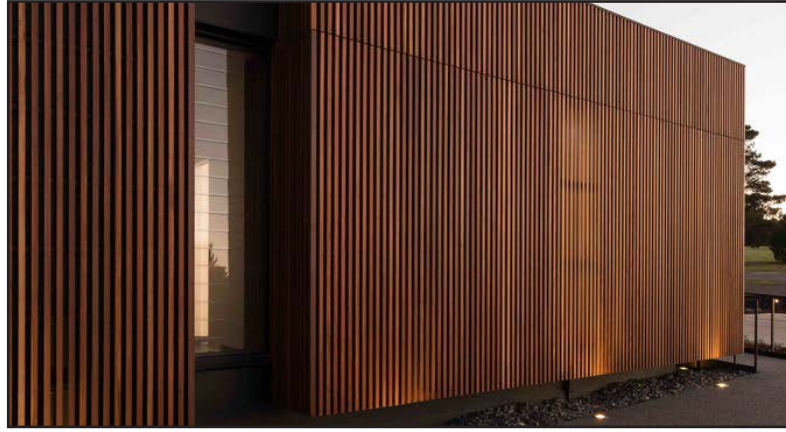
**Option 2: Cutting off Panel intercepts**



**Option 3: Cutting off Panel as per requirement**

APPLICATION POSSIBILITIES  
AluClad & WPC WoodClad

ALL CLADDING



FACADES



CEILINGS



FENCINGS/RAILINGS/GATES



# CLADDING PORTFOLIO

---

ALUCLAD  
FROM AROUND THE WORLD



From the EU

The strength of  
Aluminum

01

The Aesthetics of  
Wood

Shoreham Street  
Architect: Project Orange

Panel Reference: AX 8 Super Black



Herringbone House  
Architect: Alison Brooks Architects



Panel Reference: AW 11 Natural Teak

Loft House  
Architect: Tom Robertson Architects

Panel Reference: AX 6 Planked Walnut



WohnHaus K.  
Architect: MHP Architects

Panel Reference: AX7 Golden Oak





**Villa Carter**  
**Architect: Buratti Architetti**



**Panel Reference: AW 11 Natural Teak**

Spray Farm  
Architects: Watts Studio & Amiconi Architect

Panel Reference: AW9 Siberian Pine



Belmont Community Centre  
Architect: Billard Leece Partnership

Panel Reference: AW 10 Golden Oak



Wallan Hospital  
Architects: Crosshatch

Panel Reference: AX 6 Planked Walnut

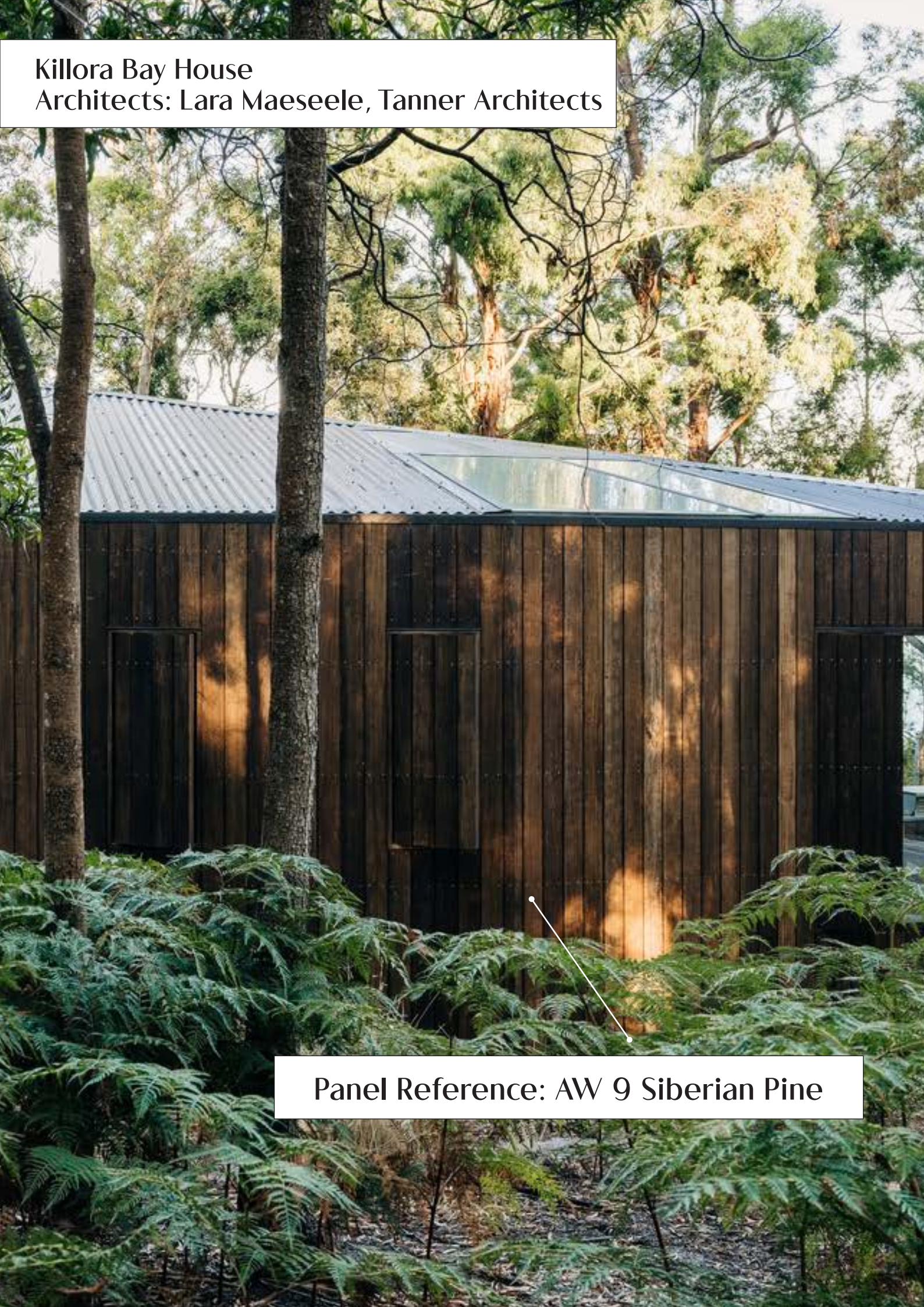


**Loft Da Alma Feminina**  
**Architect: Simone Pedreschi Architettura**



**Panel Reference: AX 6 Planked Walnut**

**Killora Bay House**  
**Architects: Lara Maesele, Tanner Architects**



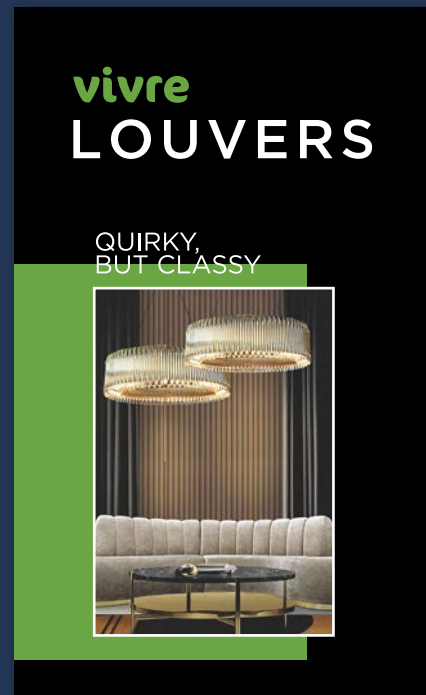
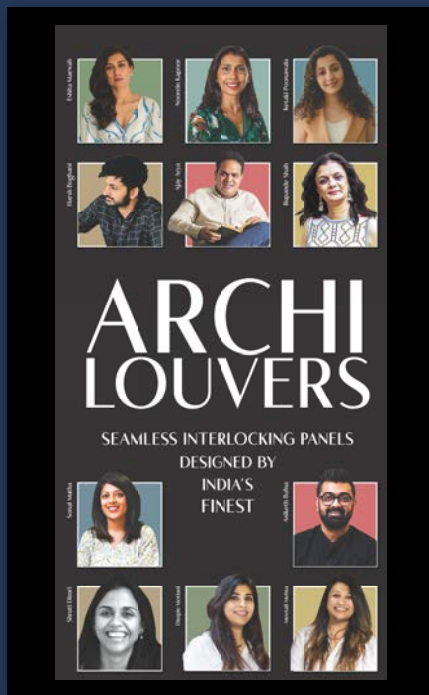
**Panel Reference: AW 9 Siberian Pine**

# For more panelling options:

**VIVRE PROFILES:  
WOOD-BASED  
ARCHITECTURAL CLADS**

**ARCHILOUVERS:  
CUSTOM-DESIGNED  
PS PANELS**

**VIVRE LOUVERS:  
PS BASED  
INTERIOR PANELS**



**TAP FOR CATALOGUE**



**TAP FOR CATALOGUE**



**TAP FOR CATALOGUE**



## vivre PANELS



[vivrepanels](#)



[vivrepanels.com](#)



[info@vivrepanels.com](mailto:info@vivrepanels.com)



Vivre Panels Pvt Ltd

### PLYWOOD & BOARDS

TEAK PLYWOOD  
FLEXI PLYWOOD  
ORIENTED STRAND BOARD (OSB)  
FINGER JOINT BOARD  
RUSSIAN BIRCH PLYWOOD  
GURJAN PLYWOOD

### PVC

PVC BOARD  
PVC DOORS

### VENEERS

TEAK VENEERS  
RECON VENEERS  
DECORATIVE VENEERS

### VIVRE DECOR

VIVRE PROFILES  
VIVRE ARCHILOUVERS  
VIVRE LOUVERS  
VIVRE WOODCLAD:  
WPC EXTERIOR CLADDING

Vivre products add natural beauty to your spaces. Color variance, weave irregularities and shading in these products are to enhance natural beauty and are not imperfections. Utmost care has been taken to provide accurate descriptions and technical specifications. Please excuse errors and omissions, if any. No guarantee / warranty of the product after installation (dimension tolerance +/- 5-10%). Technical specifications and products are subject to change without prior intimation. Use same batch material to avoid color variations, Vivre confirms that all products are free from manufacturing defects and perfectly fit for use in normal conditions.