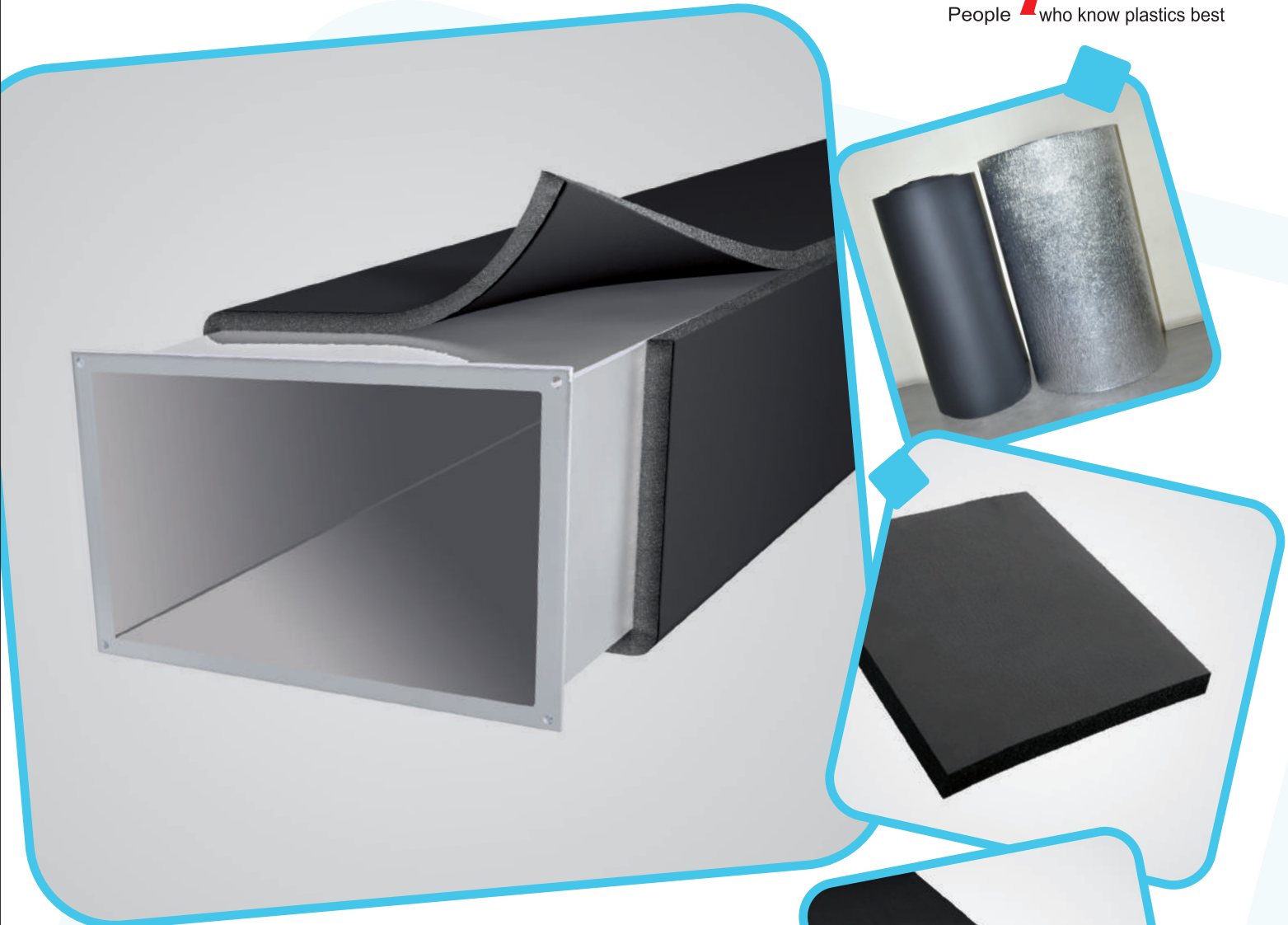


**Supreme**<sup>®</sup>  
People who know plastics best



**FR, elastomeric Nitrile foam sheet for insulation**



Complete green product certified by Green Business Centre - Confederation of Indian industries on behalf of Indian Green Building Council.



Supreme Always Value Efficient

**INSUflex**

Nitrile foam sheet for insulation



Nitrile foam sheet for insulation

INSUflex

INSUflex sheet is flexible close cell elastomeric nitrile insulation foamed rubber designed to control condensation. It effectively prevents heat energy gain & loss. It is suitable for all applications in both civil and insulation industries that require the use of insulating material for refrigeration, AC duct work, heating, plumbing, tanks, pipe fittings and water ducts. INSUflex's insulation is manufactured without CFCs and HCFCs.

## Features & Benefits

- Excellent flexibility & insulation properties due to low thermal conductivity value
- The close cell prevents spreading and absorption of water, water vapours, thus preventing condensation on cooling systems, Hence, no extra vapor barrier is required
- Available with reinforced Al foil /glass cloth and other laminations for increased insulation performance and external surface protection
- Wide operating temperature range of -40° C to 105° C
- Dust & fiber free and low VOC ensuring that our products are not hazardous to health and safe for building
- Class 0 fire performance
- Chemically inert, resistant to fungi and bacteria growth. Easy to apply

## Technical Specifications

Name of test	UOM	Value(s)	International Test standard
Density	kg/m <sup>3</sup>	50 ± 5	ASTM D 1622
Colour		Pantone colour values :RGB 45 41 38 HEX/HTML 2D2926 CMYK 63 62 59 94	Visual. Master sample comparator
Temp Range (Min service temp is -10° C if sheet is glued. Tested up to -50 as no change in area noticed, but beyond -10 as per end user discretion based on application characteristics)	°C	0 to 105 -1 to -50	EN14706 and EN14304
Thermal Conductivity			
@ 0 deg C	W/m-°k	≤ 0.035	
@ +20 deg C	W/m-°k	≤ 0.036	EN12667/ISO8497
@ +40 deg C	W/m-°k	≤ 0.038	
Water Vapour Diffusion Resistance	μ	≥ 10000	EN12806 2013
Fire Propagation index O	Fire performance index (I) Sub index (i1)	≤ 12 ≤ 6	BS 476 Part 6 (UK Building stds)
Fire performance Class 1	Flame spread final (mm)	≤ 165 (25)	BS 476 Part 7 (UK Building stds)
Reaction to fire	UL94 HBF-1	Passed in self extinguishment ≤ 30 Sec	UL
Reaction to fire	UL94 HB V0	Passed in self extinguishment ≤ 10 Sec as alternate time for each specimen	UL
Antimicrobial	Antimicrobial activity assessment	No growth appearance for 28 days	ISO 846 1997
Resistance to fungi	Fungal resistance test	Zero Fungi	C1338-00
CFC HCFC Free (Tested for 25 parameters with compounds CFC, HCFC, halon, Feron, Freon etc)	Compliance	Not detected	STD wet chemistry
RoHS (Spectroscopy & GCMS)	Compliance	Passed	ELV 6 Full for compounds
Tear resistance	N	≥ 120	ASTM D2582
Environment friendly (Certified by Green Business Centre /CII on behalf of IGBC)	Compliance	Green product	GBC/CII- Ver:1.0

## Applications

- HVAC insulation
- Clean room
- Cold storage
- Chilled water
- Raised floor
- Thermal insulation in large diameter pipes, tanks, vessels etc.
- Under slab insulation

## Available in

Thickness (mm)	Width (mm)	Length (mtr)
6	1200 (+20/-0)	30
9		20
13		14
16		12
19		10
25		8
32		6

## Connect with us

**Corporate Office Mumbai:** 1161/1162, Solitaire Corporate Park, Guru Hargovindji Marg, Andheri – Ghatkopar Link Road, Chakala, Andheri (E), Mumbai – 400093 Tel: (+91-22) 40430000 / 67710000 / 30840000 Fax: (+91-22) 40430099 / 67710099 / 30840000 **Ahmedabad:** Tel: (+91-79) 27681361 / 27680043 / 27680903 Fax: (+91-79) 27680064 **Bengaluru:** Tel: (+91-80) 22215475 / 22104696 Fax: (+91-80) 22104697 **Chennai:** Tel: (+91-44) 43851500 / 39811176 / 39811174 Fax: (+91-44) 43850498 **Noida:** Tel: (+91-120) 6660000 / 2564700 **Hyderabad:** Tel: (+91-40) 23221140 Fax: (+91-40) 23221120 **Kolkata:** Tel: (+91-33) 24858837 / 24858839 / 24858833 Fax: (+91-33) 24858838 **Pune:** Tel: (+91-20) 25890538. **E-mail:** insulation@supreme.co.in **Website:** www.supreme.co.in

### THE ABOVE MENTIONED SPECIFICATIONS ARE FOR REFERENCE PURPOSES ONLY.

Disclaimer: Recommendation for the use of this product is based upon tests believed by us to be reliable. However, since we have no control over the conditions under which the goods are transported or under which the purchaser stores, handle or uses these goods, TSIL (seller) makes no warranty of any kind, expressed or implied that the goods sold shall be of the standard quality of the seller and buyer assumes all risks and liability resulting from the use of the goods. Before using, user shall determine the suitability of the product for this intended use, and user assumes all risks and liability whatsoever in connection therewith and SIL makes no warranties or representation as to the fitness of the product for any particular use. Seller neither assumes nor authorizes any person to assume for the seller any other liability in connection with the sale or use of this product, and there are no oral agreement or warranties collateral to or affecting this product. The above values measured in our laboratory do not constitute a product specification.