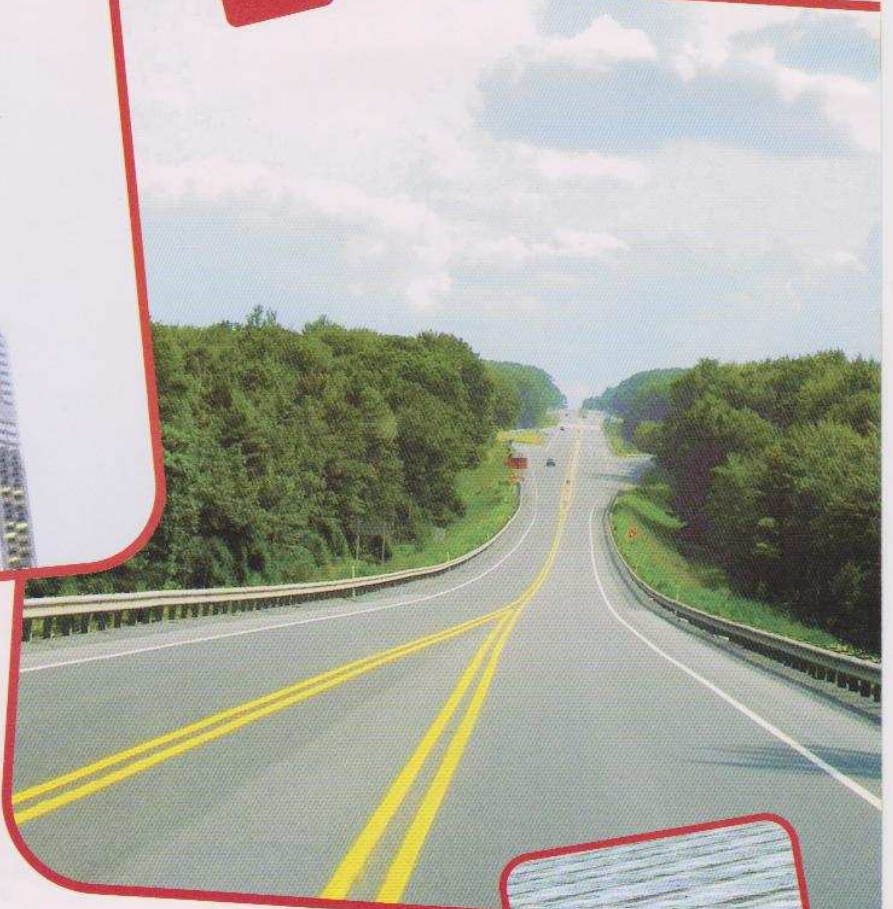
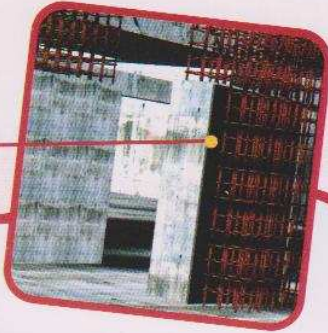


Supreme[®]
People who know plastics best

DURAbordHD100 used in
expansion joints in columns



DURAbordHD100 used in
expansion joints in roads



Supreme Always Value Efficient

DURAboardHD100

The most compressible filler board for expansion joints
(Formerly Sifflex/CapcellHD100)

DURAbordHD100

The most compressible filler board for expansion joints
(Formerly Silflex/CapcellHD100)

DURAbordHD100

'DURAbordHD100' is a cross-linked, pre-moulded, high performance joint filler board. It is readily compressible and ensures low load transfer.

Features & Benefits

- Closed cell
- Excellent chemical resistance
- Thermally stable (from - 40°C to + 70°C)
- Bitumen free
- Resilient - recovers more than 96%
- Easy to use
- Rot proof and bacteria resistant

Technical Specifications

Property	Units	DURAbordHD100 Typical Value	Test Method
Density	Kg/m ³	100 ± 10%	ASTM - D 3575
Water absorption	Kg/m ² of cut surface area	0.080 max.	ASTM - D 3575
Compression deflection & recovery % without weathering	%	94% min.	Highway Clause 1015
Compression deflection & recovery % with weathering	%	92% min.	Highway Clause 1015
Extrusion	mm	3mm max.	Highway Clause 1015
Alkali resistance		No effect observed	AS - 1350 - 460.2-1982
Weathering test		No disintegration	Highway Clause 1015

Applications

- Structural expansion joints in concrete brick and block work
- Isolation to infill panels
- Bridge decks, abutments, pier hinge joints etc.
- As a backup support for sealant
- Expansion joints in concrete highways, airport runways, taxi tracks etc.
- Expansion joints in parking areas, industrial flooring etc.
- Water retaining and water excluding structures

Available in

Available in thickness ranging from 8mm to 100mm
Sizes:

- 900mm x 1800mm
- 1100mm x 2300mm

*Other thickness and sizes also available on request

Connect with us

Mumbai: (+91-22) 4043 0000/ 6771 0000 • **Ahmedabad:** (+91-79) 2768 1361/ 2768 0043/ 2768 0903
Bengaluru: (+91-80) 2228 5282/ 2228 5475 • **Chennai:** (+91-44) 4218 0523/ 4203 0972 • **Delhi:** (+91-11) 4659 0000/
2641 3728/ 2621 7454 • **Hyderabad:** (+91-40) 2322 1140 • **Kolkata:** (+91-33) 2485 8837/ 2485 8839/ 2485 8833
Pune: (+91-20) 2589 0538 • **Email:** dura@supreme.co.in • **Website:** www.supreme.co.in

THE ABOVE MENTIONED SPECIFICATIONS ARE FOR REFERENCE PURPOSES ONLY.

Disclaimer: Recommendation for the use of this product is based upon tests believed by us to be reliable. However, since we have no control over the conditions under which the goods are transported or under which the purchaser stores, handle or uses these goods, TSIL (seller) makes no warranty of any kind, expressed or implied that the goods sold shall be of the standard quality of the seller and buyer assumes all risks and liability resulting from the use of the goods. Before using, user shall determine the suitability of the product for this intended use, and user assumes all risks and liability whatsoever in connection therewith and SIL makes no warranties or representation as to the fitness of the product for any particular use. Seller neither assumes nor authorizes any person to assume for the seller any other liability in connection with the sale or use of this product, and there are no oral agreement or warranties collateral to or affecting this product. The above values measured in our laboratory do not constitute a product specification.