



Xylem LAMINATE REVOLUTION

Welcome to the world of Xylem!

Here, we live and breathe innovation. Each laminate delivers inspiring, high quality and artistic excellence to define your style. From the assembling of unique design to the exclusive creation of laminates.

We are on a mission to transform your vision into a reality.





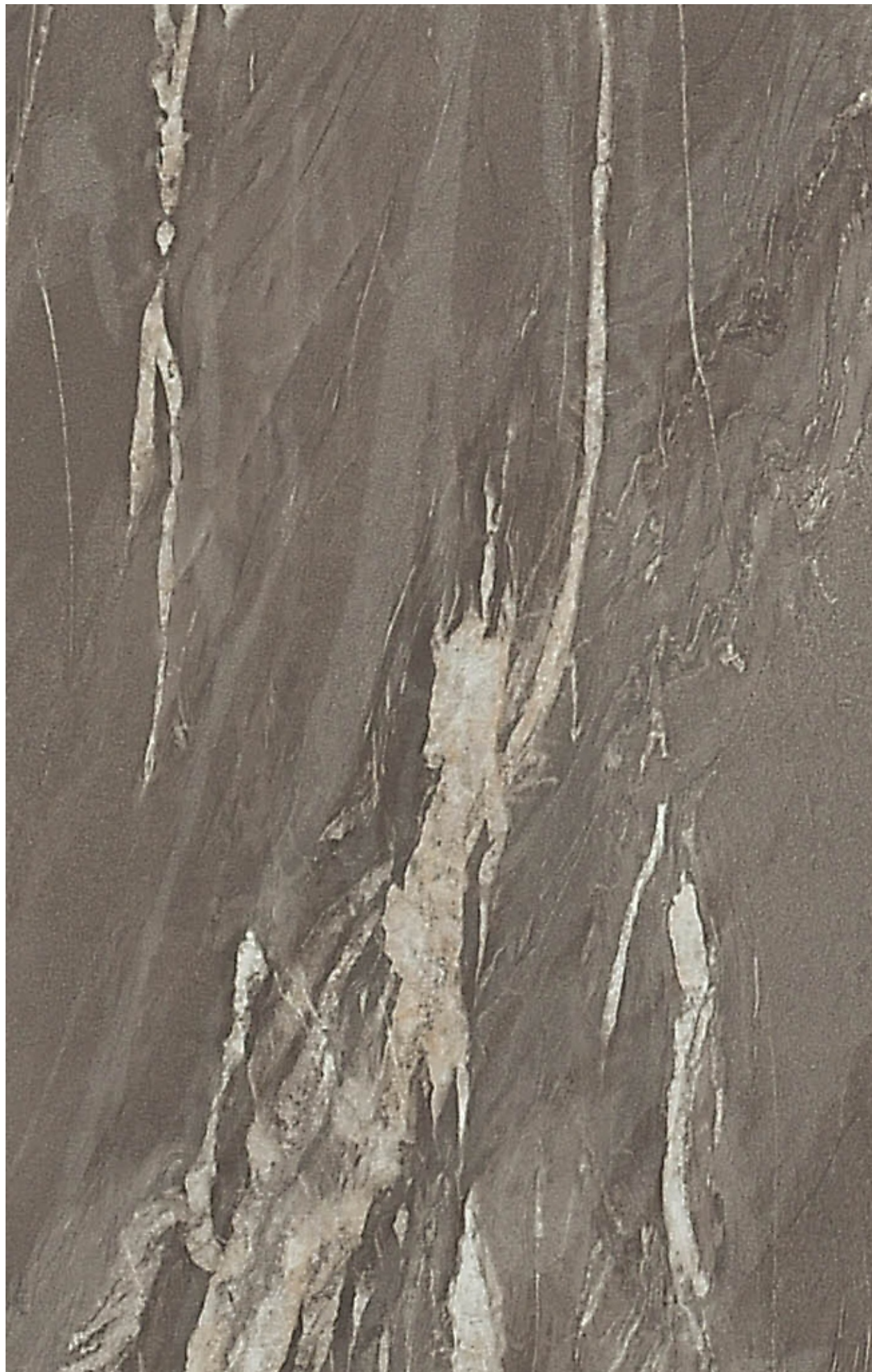
490 SYNC | Aged Robble



491 SYNC | Aged Robble

THE
STONE
=COLLECTION=
★ ★ ★

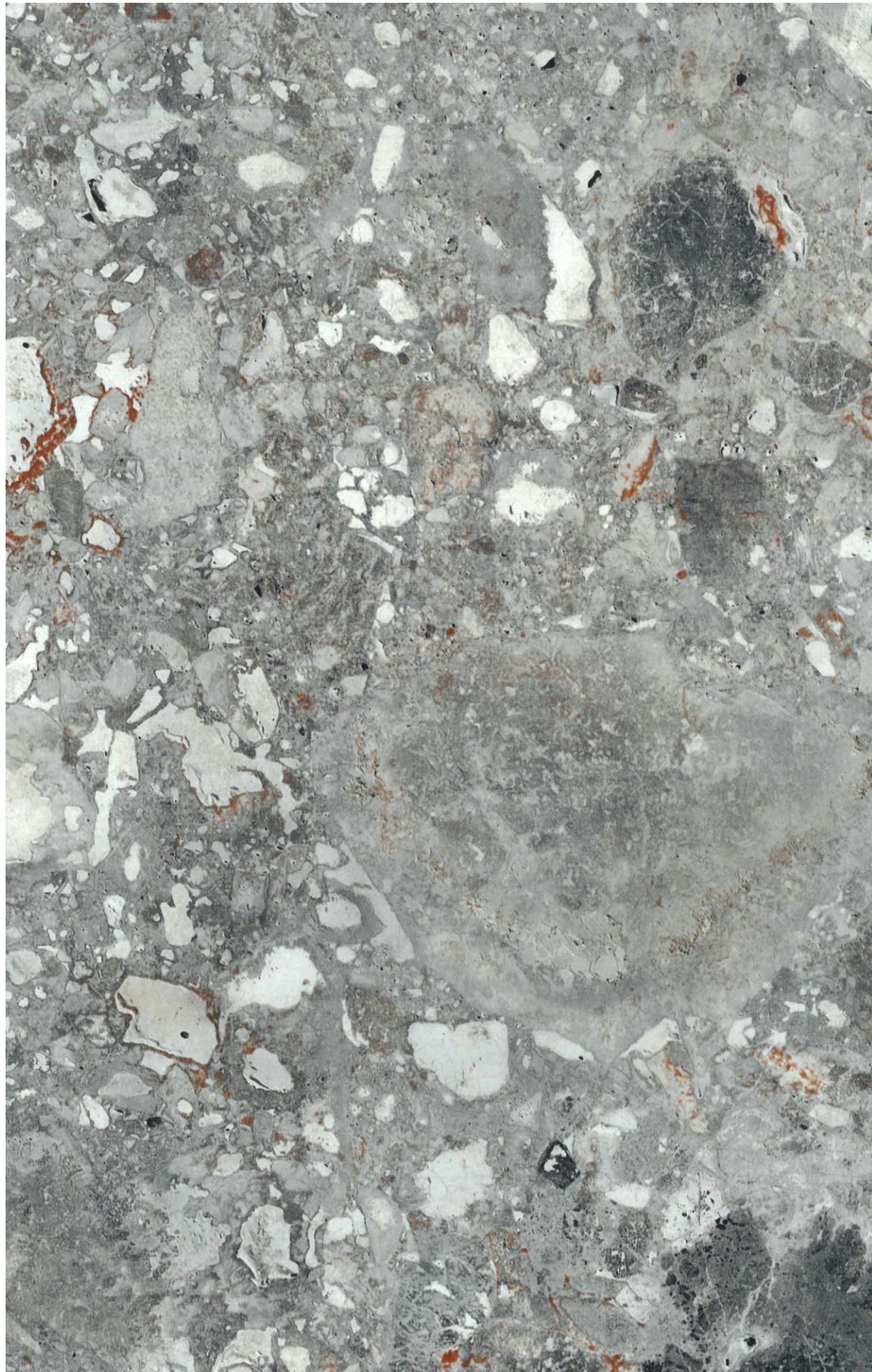




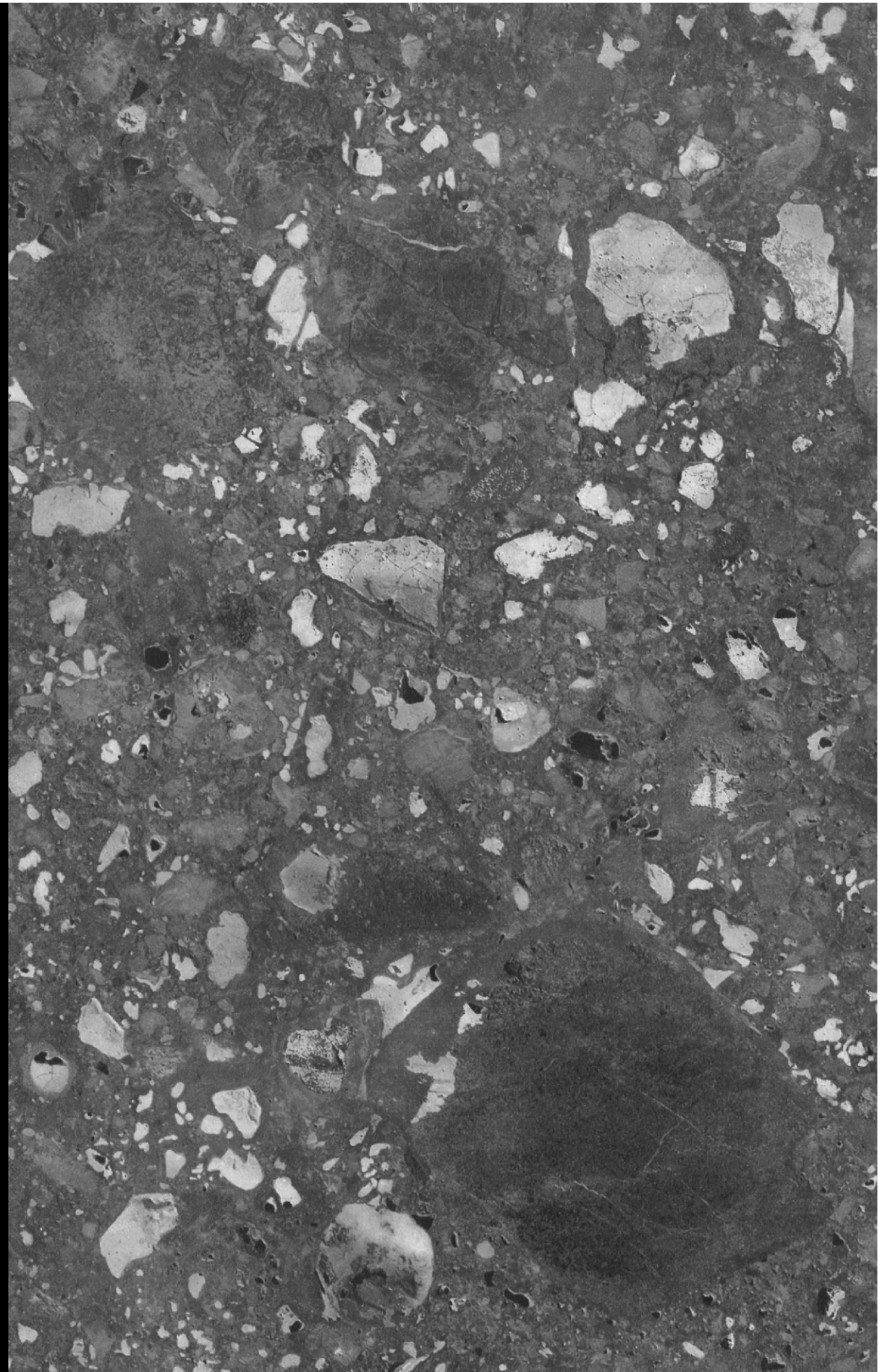
549 MB | Letizia **NEW DESIGN!**



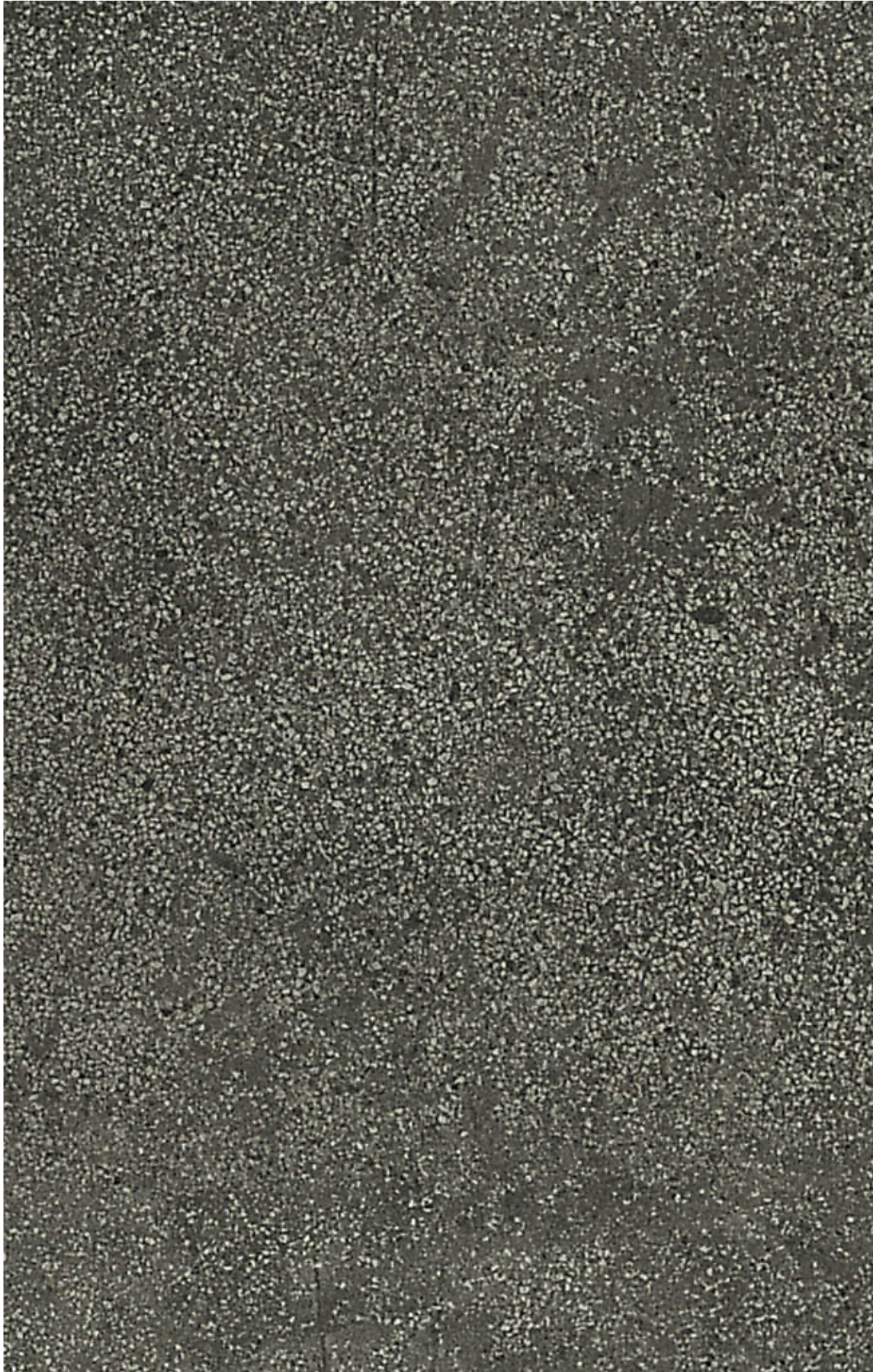
NEW DESIGN! 550 MB | Letizia



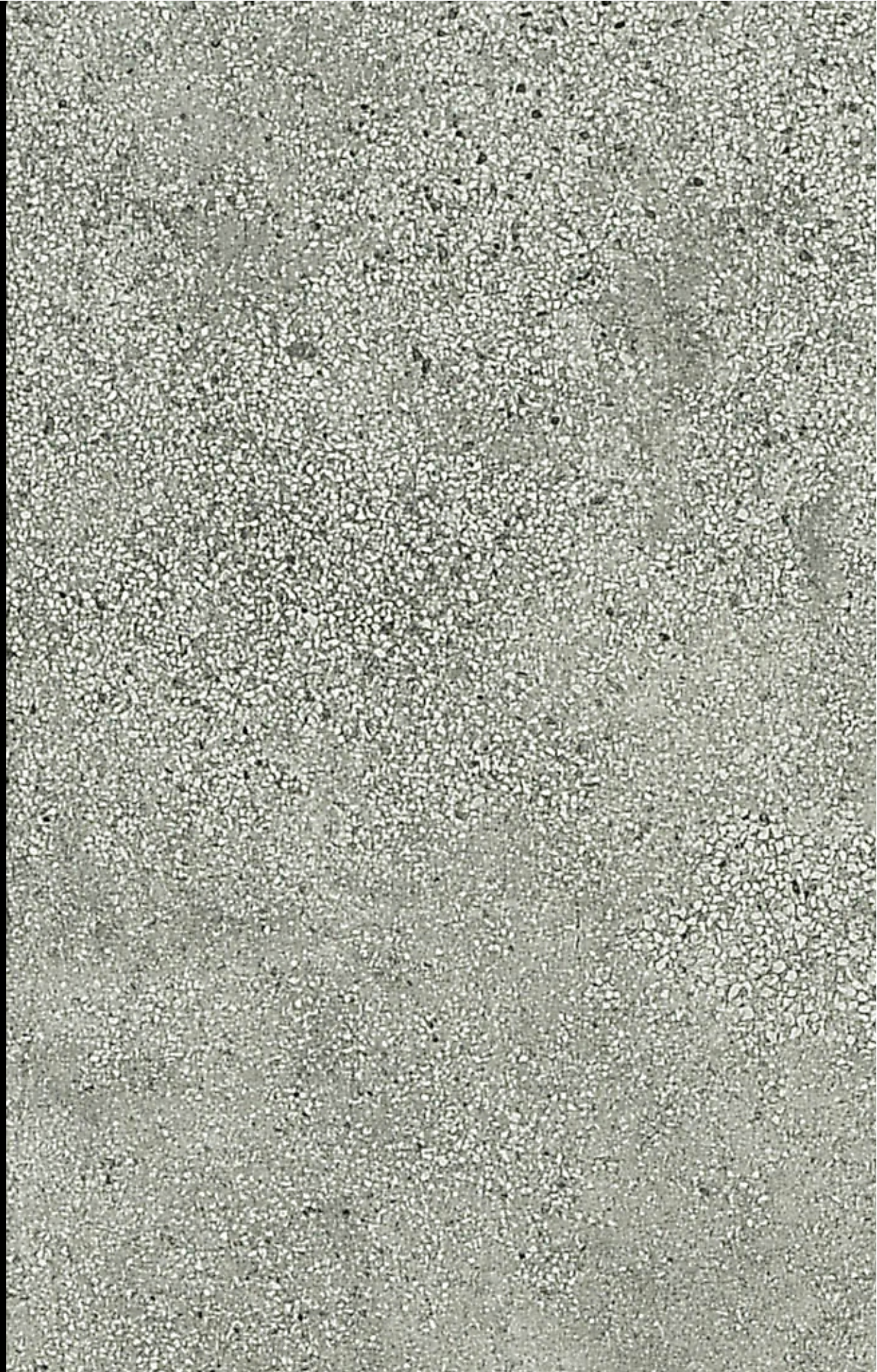
572 LS | Breccia Agrippina **NEW
DESIGN!**



**NEW
DESIGN!** 573 LS | Breccia Agrippina

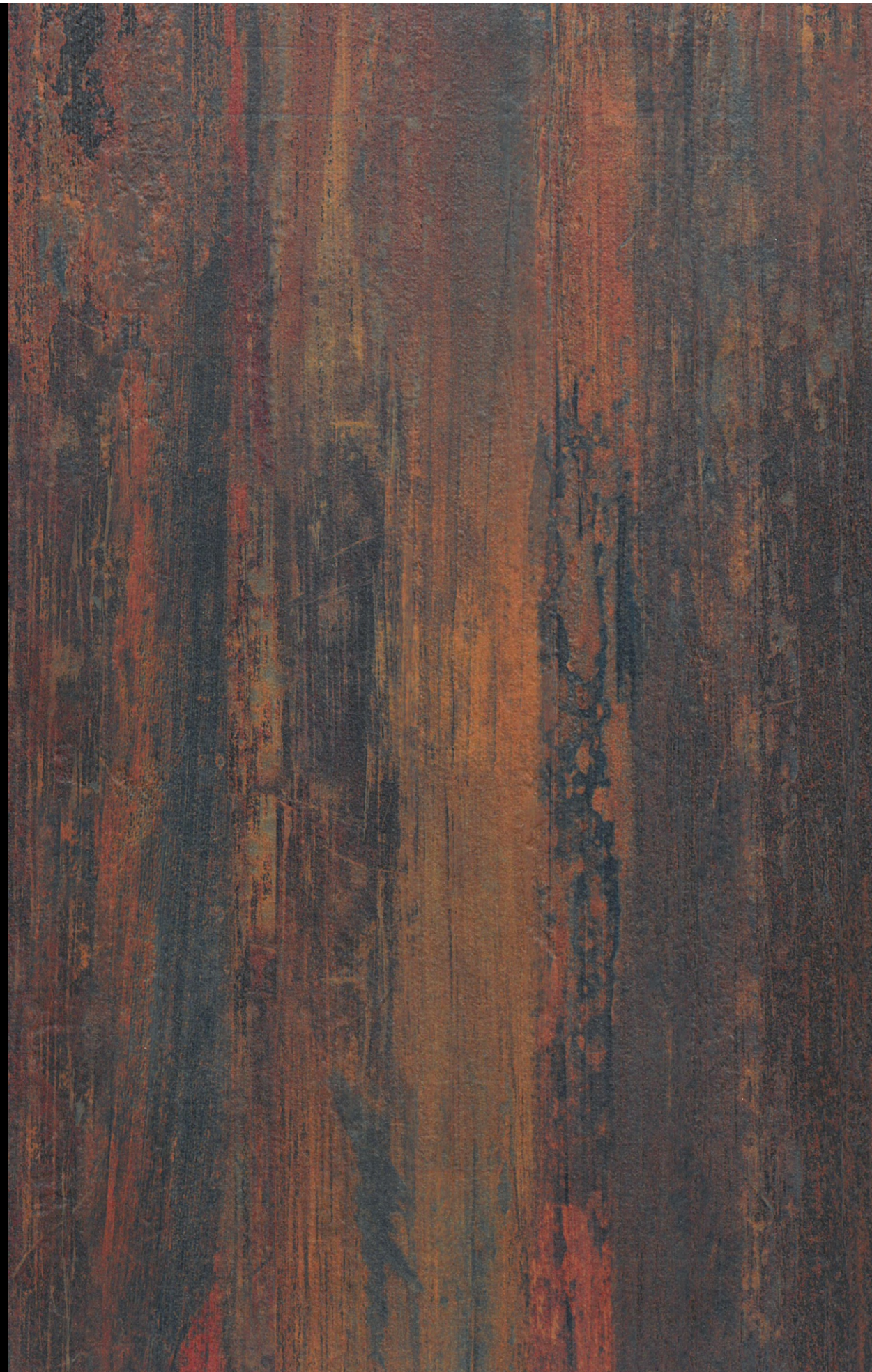


677x GM | Abbey Road **NEW
DESIGN!**



**NEW
DESIGN!** 683x GM | Abbey Road

THE
RUSTIC
=COLLECTION=

A decorative graphic consisting of three small, five-pointed stars arranged horizontally, enclosed within a curved, ornate frame.



565 LD | Juan **NEW
DESIGN!**



**NEW
DESIGN!** 566 LD | Juan



678x LD | Damast **NEW
DESIGN!**



**NEW
DESIGN!** 666x LD | Moss



535 BC | Comorin Wood



536 BC | Comorin Wood



650x MG | Nautical Wood



652x MG | Nautical Wood



662x RM | Distressed Wood



663x RM | Distressed Wood



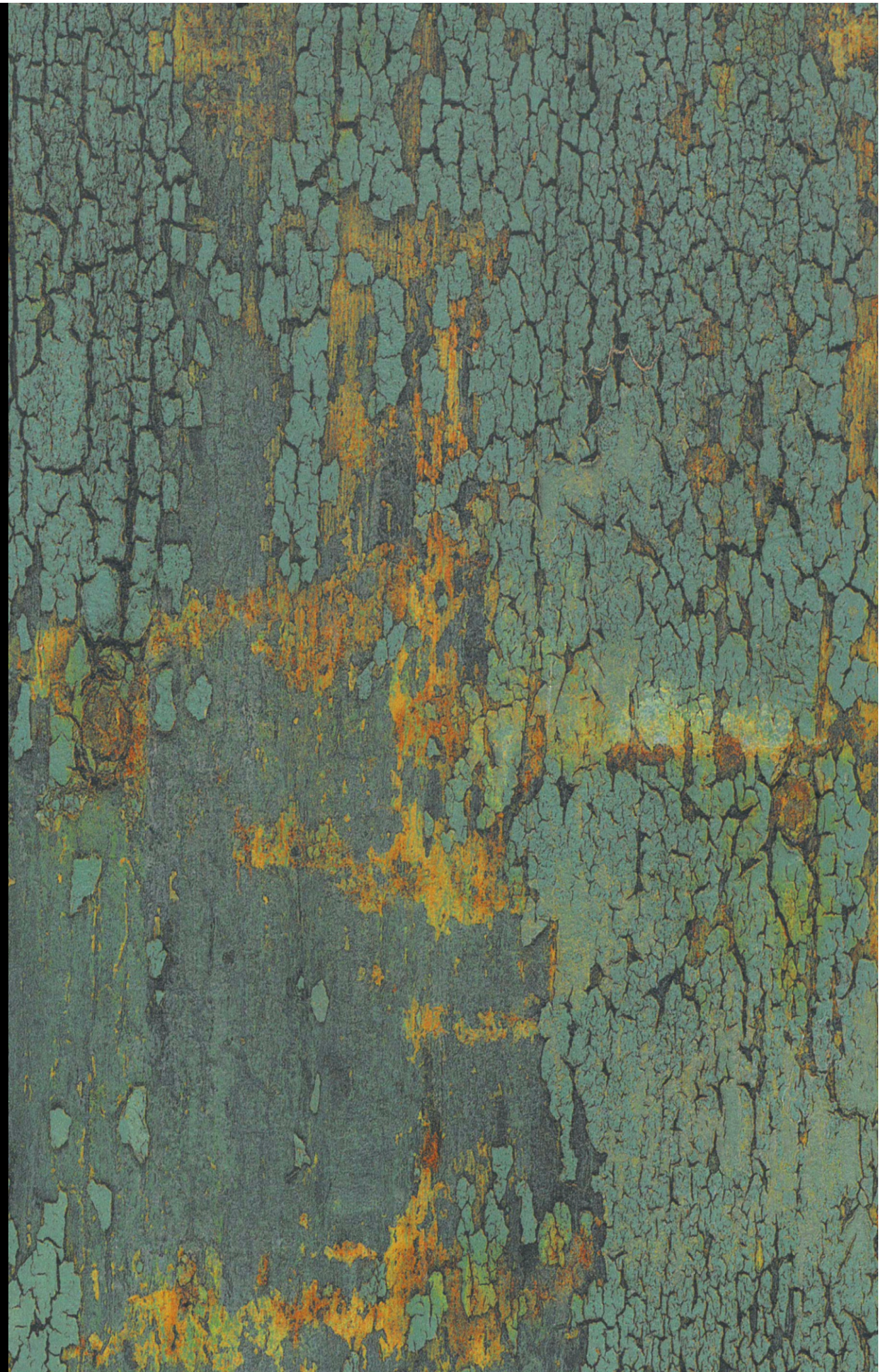
404 BC | Snow Painted Metal



427 BC | Dark Painted Metal



405 BC | Charcoal Painted Metal



408 BC | Opal Painted Metal



406 BC | Copper Painted Metal



407 BC | Aqua Painted Metal



636x BC | Brooklyn Light



637x BC | Brooklyn Dark

THE
EXOTIC WOOD
=COLLECTION=
★ ★ ★

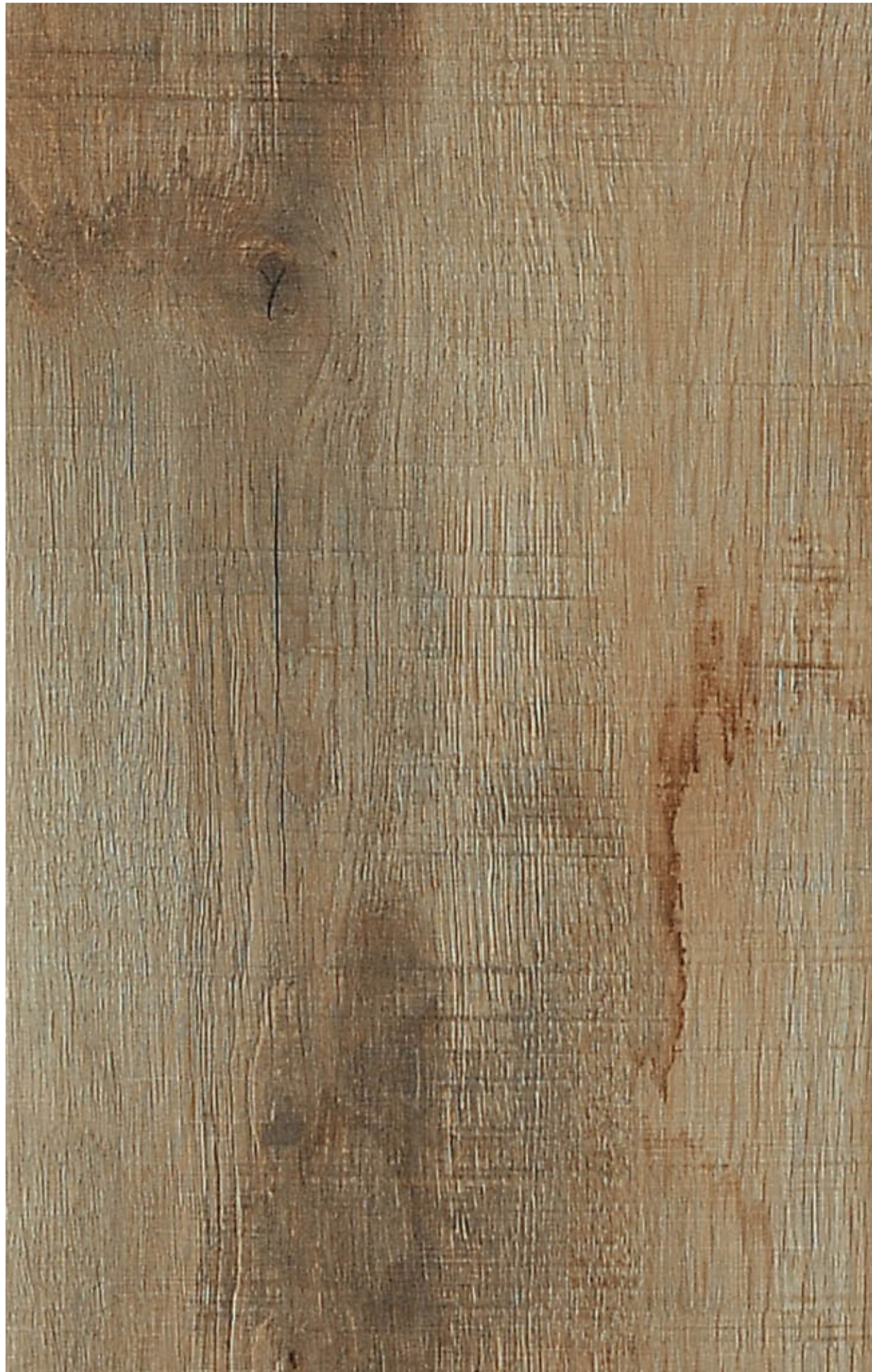




641x BC | Canyon Apple



465 MO | Alhamra Wood



533 SC | Canyon River Oak



534 SC | Canyon River Oak



459 MO | Lancelot Oak



460 MO | Lancelot Oak



463 MG | Desira Ash



464 MG | Desira Ash



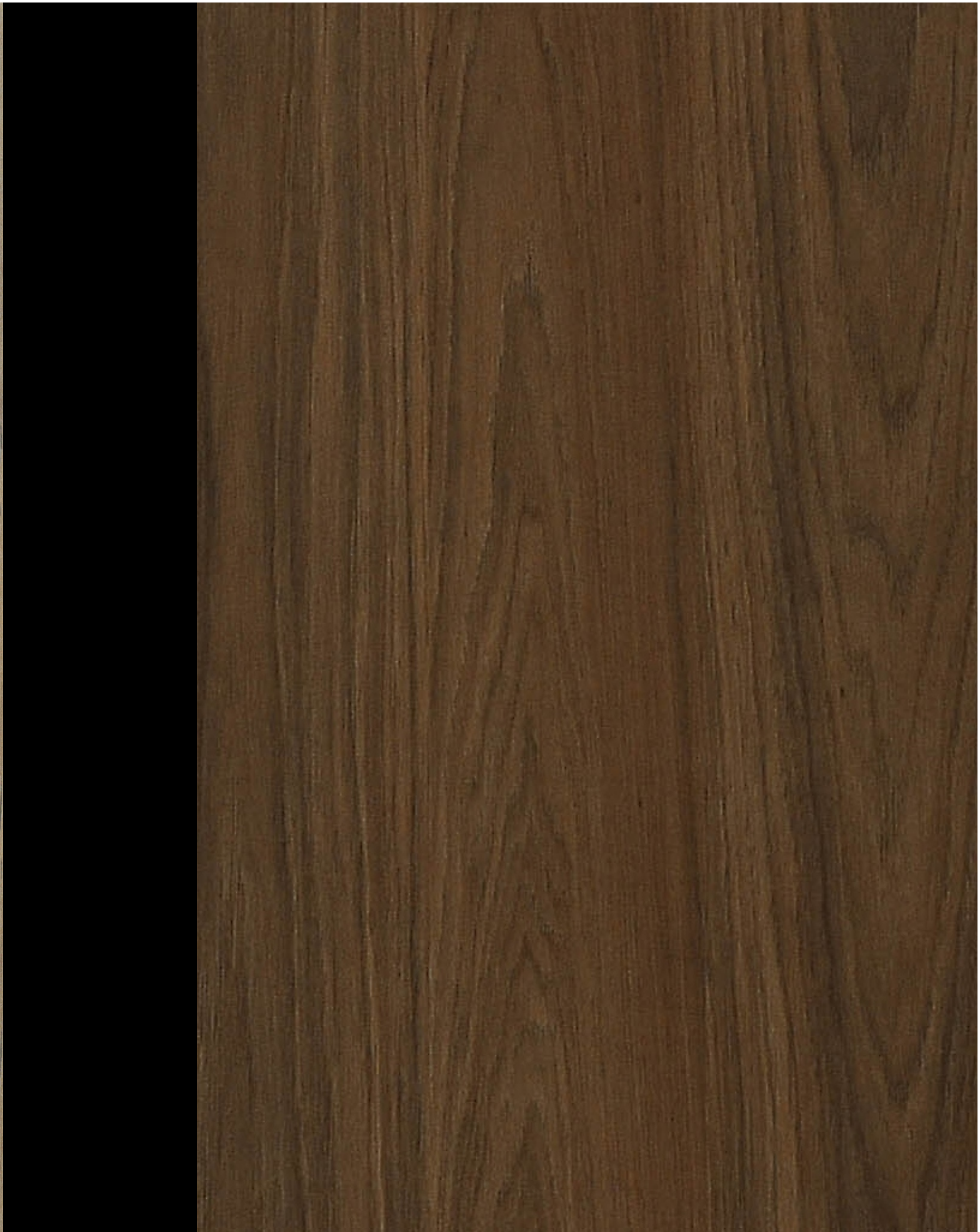
439 MG | Rock Pile



440 MG | Rock Pile



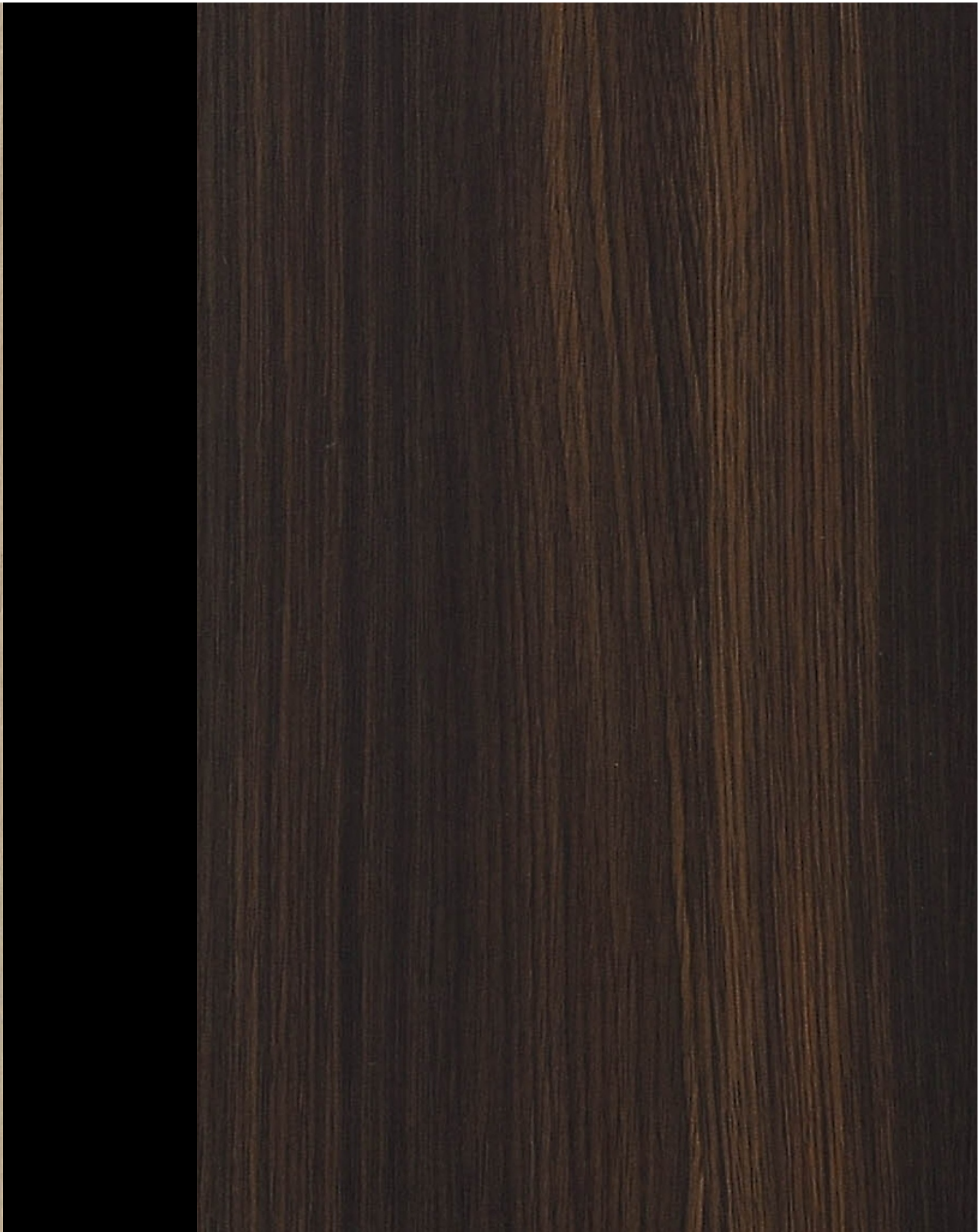
415 MG | Saratoga Hickery



416 MG | Saratoga Hickery



414 MG | Saratoga Hickery



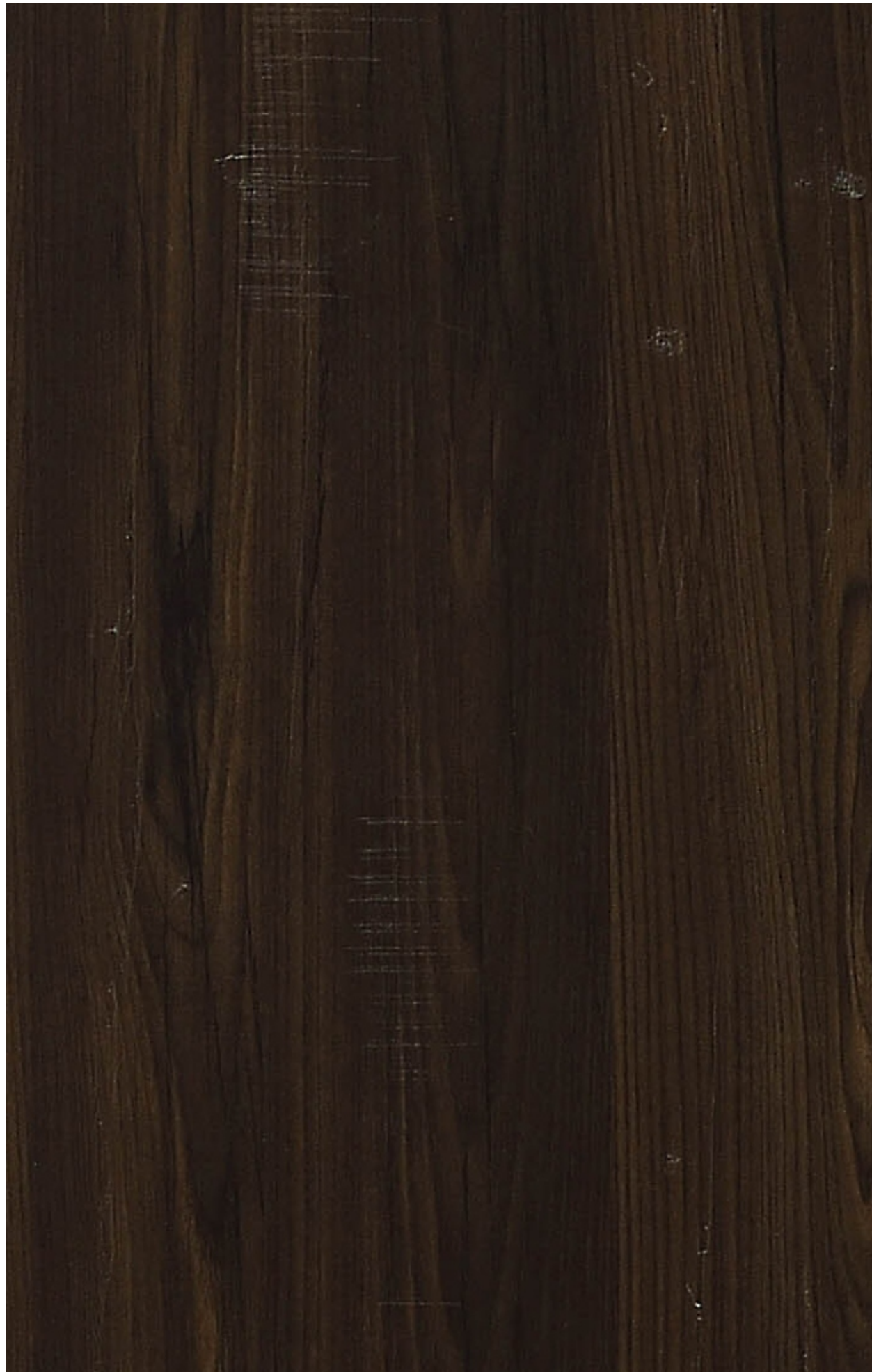
435 MG | Mirage



411 VV | Jarama Elm



412 VV | Jarama Elm



413 VV | Jarama Elm



431 DZ | Jasmund Beech



432 DZ | Jasmund Beech



433 DZ | Jasmund Beech



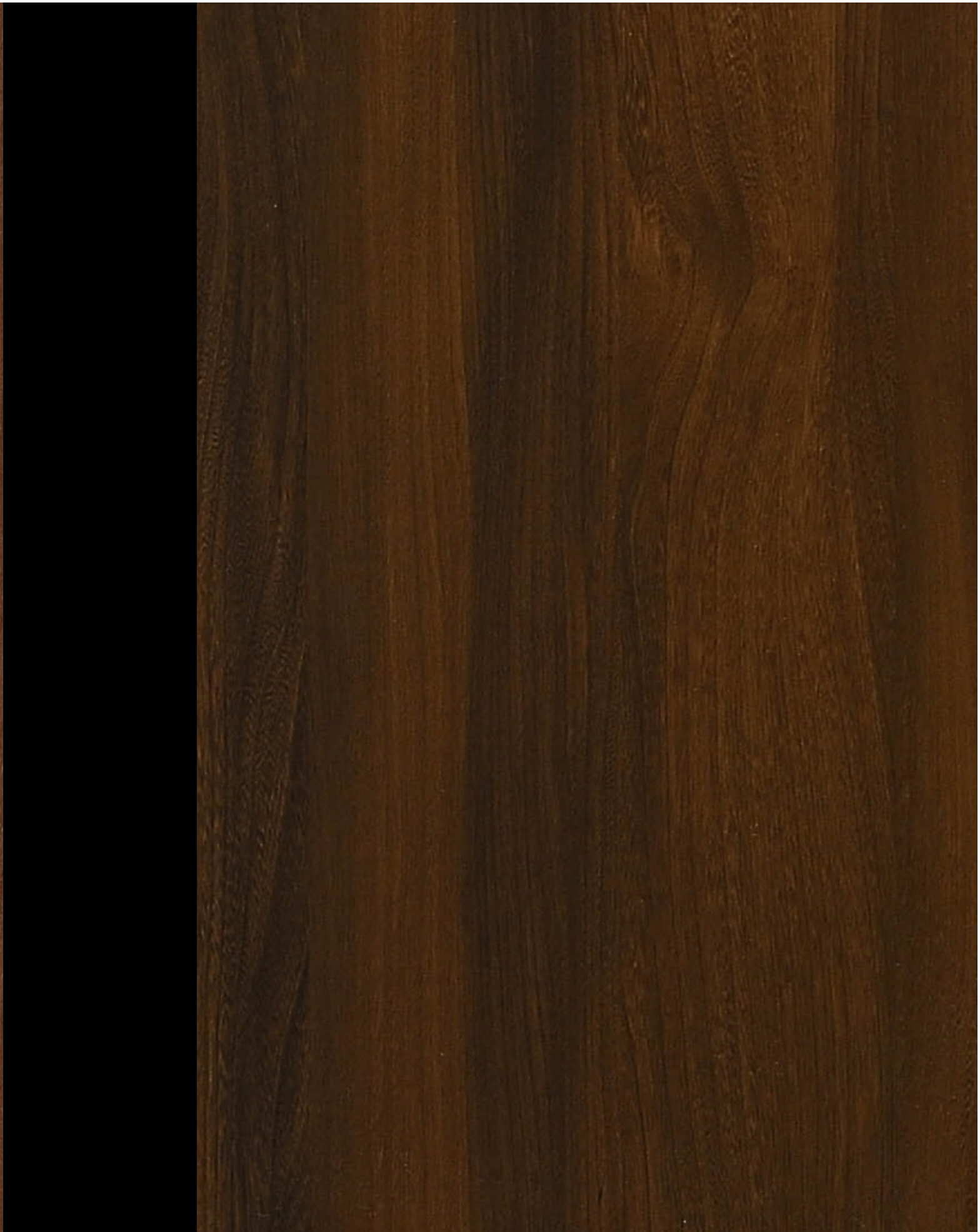
437 NW | Silver Horn



438 NW | Silver Horn



441 NW | Elm Baron



442 NW | Elm Baron



449 MO | Manhattan



450 MO | Manhattan



443 DZ | Colonial Times



444 DZ | Colonial Times



531 SW | Canyon Baffin Oak



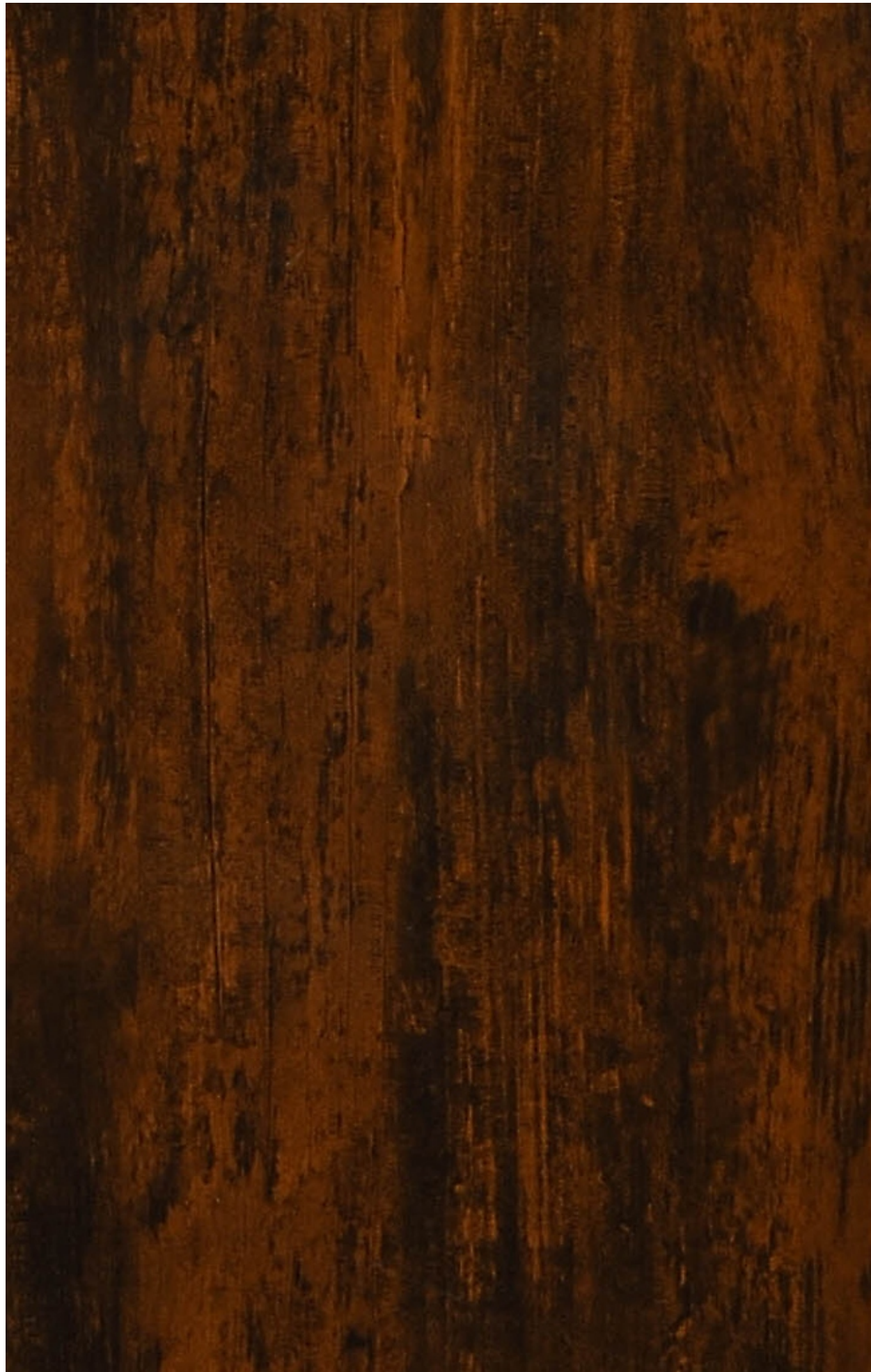
532 SW | Canyon Baffin Oak



530 SW | Canyon Baffin Oak



465 MR | Alhamra Wood



417 MR | Ice Cream Wood



641x MR | Canyon Apple



531 MR | Canyon Baffin Oak



532 MR | Canyon Baffin Oak



Product Data / Specifications

Royal Crown Metal Series

Crown presents the Metal Foil series with variants to choose from different textures. These laminates are specifically designed for vertical interior applications and work brilliantly as high lighters.

Royal Crown Phenolic Backers

Phenolic Backers are produced for application to unexposed surfaces and therefore these backers are devoid of any design over the surface unlike general purpose laminates.

Royal Crown Fire Retardant Laminates

These Laminates are slowly gaining popularity due to its ability to retard and delay the spread of fire. These laminates can be used just about anywhere but are popular with schools and colleges.

Royal Crown Anti-static Laminates

These laminates are manufactured with special resin formulations to make sure they don't conduct static electricity and typical applications range from IT offices, call centres, laboratories, electronic industries and pharmaceutical laboratories.

Royal Crown Colour-Core Series

These laminates are typically used in areas where the laminates cross section is clearly visible and therefore the cross section and the design over the surface have the same colour.

Royal Crown Chemical Resistant Laminates

These laminates have special additives and protective surface film that make them spot on for usage in laboratories, clinics and other pharmaceutical areas where interaction with chemical is a day to day affair.

Royal Crown Post forming Laminates

Post Forming grade laminates are typically used in both vertical and horizontal applications and in interiors, where the laminate is required to form or roll over different radius over the surface of the substrate.

Royal Crown Compact Laminates

This Compact solid surface is manufactured from special phenolic resins. Due to the strength of compact laminate, it has properties of dimensional stability, water and weather resistance. The usage is usually in School Benches, Toilet Cubicles, Kitchen Platforms, Wall Panelling and any other applications where load bearing is requested.

Royal Crown Chalk/Marker Laminates

Crown presents Write-on Laminates which constitute of Marker and Chalk Grade Laminates. Usage ranges anywhere from schools, Colleges to offices and other work places.

Technical specification

PROPERTIES	SPECIFIED VALUES AS PER IS : 2046-1995, TYPE S,HGS	CROWN LAMINATES
Product High Pressure Decorative laminated sheets		
-Size	1220x2440 MM	1220 X 2440 MM
-Thickness	1.0 MM	1.0 MM
-Thickness	1.000mm (+0.10 mm)	(+/- 0.05 mm)
Dimensional Stability at deviated temperature		
-Longitudinal (%)	0.55 (Maximum)	0.35(Max)
-T ransverse (%)	1.025 (Maximum)	0.75(Max)
Dimensional Stability at 20'C		
-Longitudinal (%)	0.375 (Maximum)	0.275 (Max)
-T ransverse (%)	0.60 (Maximum)	0.49 (Max)
Resistance to dry heat 180'C	Not worse than Grade 4	Passed
Resistance to immersion in boiling water		
-Mass increase (%)	10.0 (Maximum)	6.5 (Max)
-Thickness increase (%)	11. 8 (Maximum)	7.8 (Max)
-Appearance	Not worse than Grade 4	Passed
Resistance to impact by small diameter ball	20 N (Minimum)	25N (Minimum)
Resistance to cracking	Not worse than Grade 4	Passed
Resistance to scratching	2 N (Minimum)	3 N (Minimum)
Resistance to staining	Not worse than Grade 5	Passed
Resistance to cigarette burns	Not worse than Grade 3	Passed
Resistance to steam	Not worse than Grade 4	Passed
Resistance to colour change (wool standards)		
-In Xenon arc light	Not worse than Grade 6	Passed
-In enclosed Carbon arc light	Not worse than Grade 5	Passed
Resistance to surface wear	350 (revolution)	410 (Revolution)
Apperance	Should be free from foreign particles	Passed

Maintenance

Clean with soft moist cloth with mild soap solution of household detergent. Cleaner should not be used. Pearl colours are recommended for vertical applications.

Note:

Samples pasted are indicative of colour, pattern and finish. Not actual thickness.

Disclaimer : Customers are advised to reconfirm laminate colour & Finish.

Our liability does not include claims arising out of sample chip pasting error.

Warranty:

Royal crown laminates recommends product to be inspected before installation. Our liability will be limited to the extent of cost of the product only.



Crown Decor Pvt. Ltd.

Head Office : 6-Patel Avenue, First Floor, Gurudwara,
S. G. Highway, Bodakdev, Ahmedabad - 380 059, Gujarat, INDIA
Phone : +91 79 4001 7979 • Fax : +91 79 4001 7900

Factory : Survey No. 419/1, Radhe Industrial Estate,
Tajpur Road, Changodar - 382 213, Ahmedabad, Gurajat, INDIA
Phone : +91 95379 49494 • Fax : +91 78782 52343

Email : marketing@royalcrownlaminates.com
Website : www.royalcrownlaminates.com