

LATEST IN EXTERIOR &
INTERIOR CLADDING

Stonera **ALSTONE®**
WORK of ART!

THE LEGACY OF
18+ YEARS OF DELIVERING
OVER 500+ MILLION Sq. Ft.
OF ACPs,
NOW DELIVERS EVEN MORE.

ALSTONE[®]



ALSTONE®
Stonera
WORK of ART!

When all other materials are weathered and degraded, it is often stone that stands the test of time. Our Stonera Series is similarly inspired by the various levels of natural beauty usually found inside metamorphic, sedimentary, and igneous rocks. Come, and fall in love with the Stonera Series with its exquisite detailing, a potpourri of earthy textures offered by gneiss, marble, conglomerate, limestone, obsidian, basalt, and related rocks.

Alstone's Stonera Series - is about dreams that not only come true but last longer and stay elegant and beautiful - being faithful to your vision and speaking volumes about your discerning choice.



**UNIQUE
FINISHES**



**READY
TO USE**



**100%
MAINTENANCE FREE**



**WATER &
TERMITE PROOF**



**WIDE RANGE
OF COLOURS**



**IDEAL FOR RESIDENTIAL
& COMMERCIAL BUILDINGS**

ALSTONE®





AS- 601
Forest Rock

Forest Rock is an amazing mix shade inspired by the original mineral mined from the earth's crust - with glimmers of granite, limestone, mortar, and pulverised marble. Like its original inspiration, it gives off tones of longevity and shows subtle changes of shades - by day and night.

ALSTONE[®]





AS- 602
Decayed Rock

Exotic Nature Decayed Rock brings a touch of the precious moonlight grey by night and is exotic eastern inspired, understated and beautifully versatile contemporary décor that meets the demand for bringing exterior looks to the interior - with a touch of gloss.



ALSTONE®





AS- 603
Dholpur Pink

Dholpur pink is a pale pink-tinted cast shade with deeper grey-brown mottled streaks that are common.

The grains are often diffuse-porous; solitary and radial multiples; medium to large pores in no specific arrangement, is often of great use for exteriors and facades to give the imagery and look of standing tall and unmoved over centuries or even millennia.



ALSTONE[®]

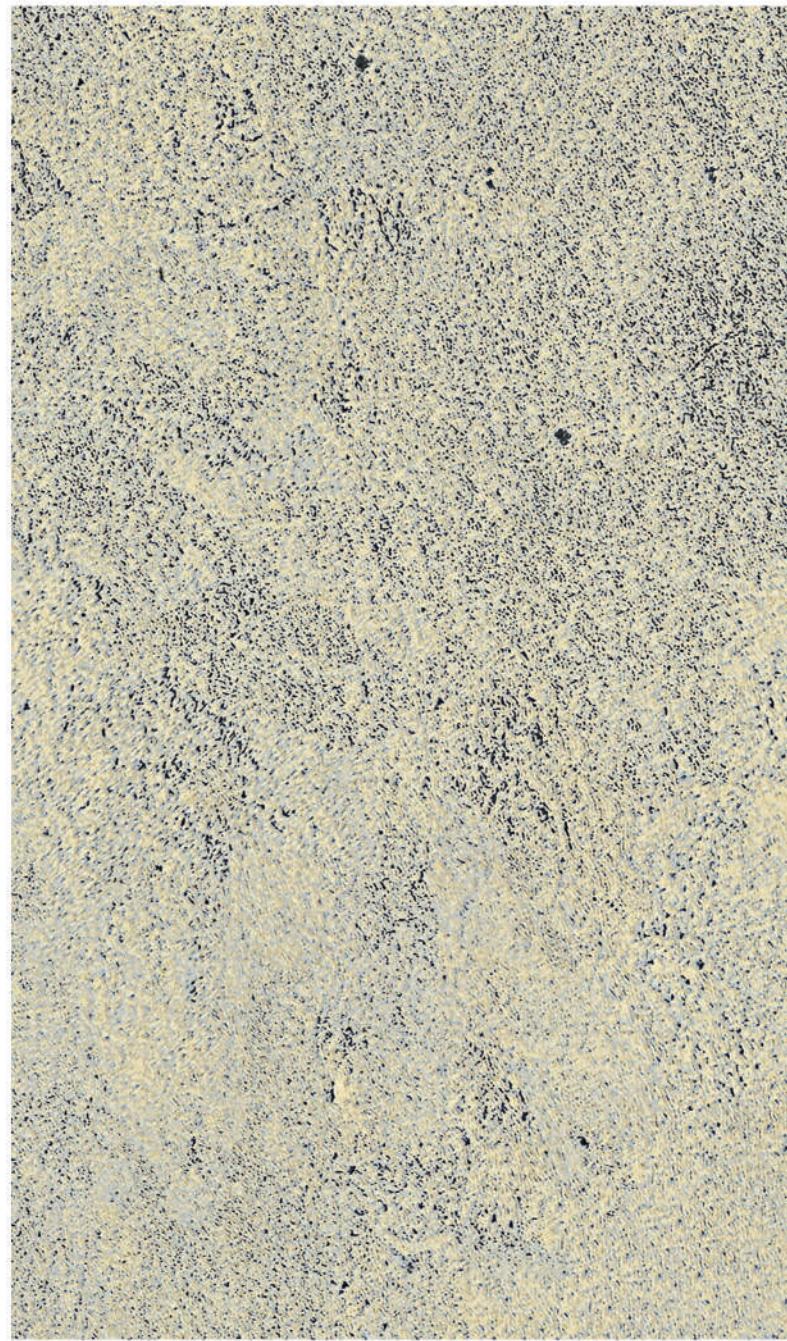


1. AS- 604 Cement

1.



2.



1.

AS- 604 Cement

Looking for just the right cool shade to counter the torrid Indian heat? Then this finish is perfect for you. Adorn your walls and exteriors with this small gravel texture finish grey cement ACP from Stonera. Perfect in creating a natural look in your home, when paired with lime-washed or earthy tones home décor as well.

2.

AS- 605 Gravel Cement

The unfinished appeal of fine-grained gravel cement is a rare quality of cool, without the bulk that accompanies actual cement. Get a factory-style façade that is grainy, uber chic and has an industrial tone - giving the right amount of depth and contrast to colourful tints, people and objects.

ALSTONE®



1



2



1

**AS- 606
Grey Space**

Not to be confused with one of the several Infinity stones, this Space Stone shade does exercise control over your space and grants the user - unmatched admiration and envy from those who can behold it, but do not own it.

2

**AS- 607
Black Space**

Sometime resembling the moon rocks that were brought over to the earth when the astronauts visited the moon, this shade often reminds us of space, the dark side of moon, the Kuiper belt and the rings of Saturn. Not quite terrestrial yet ethereal, it leaves us pondering about space-time continuums, without a wormhole to intervene.

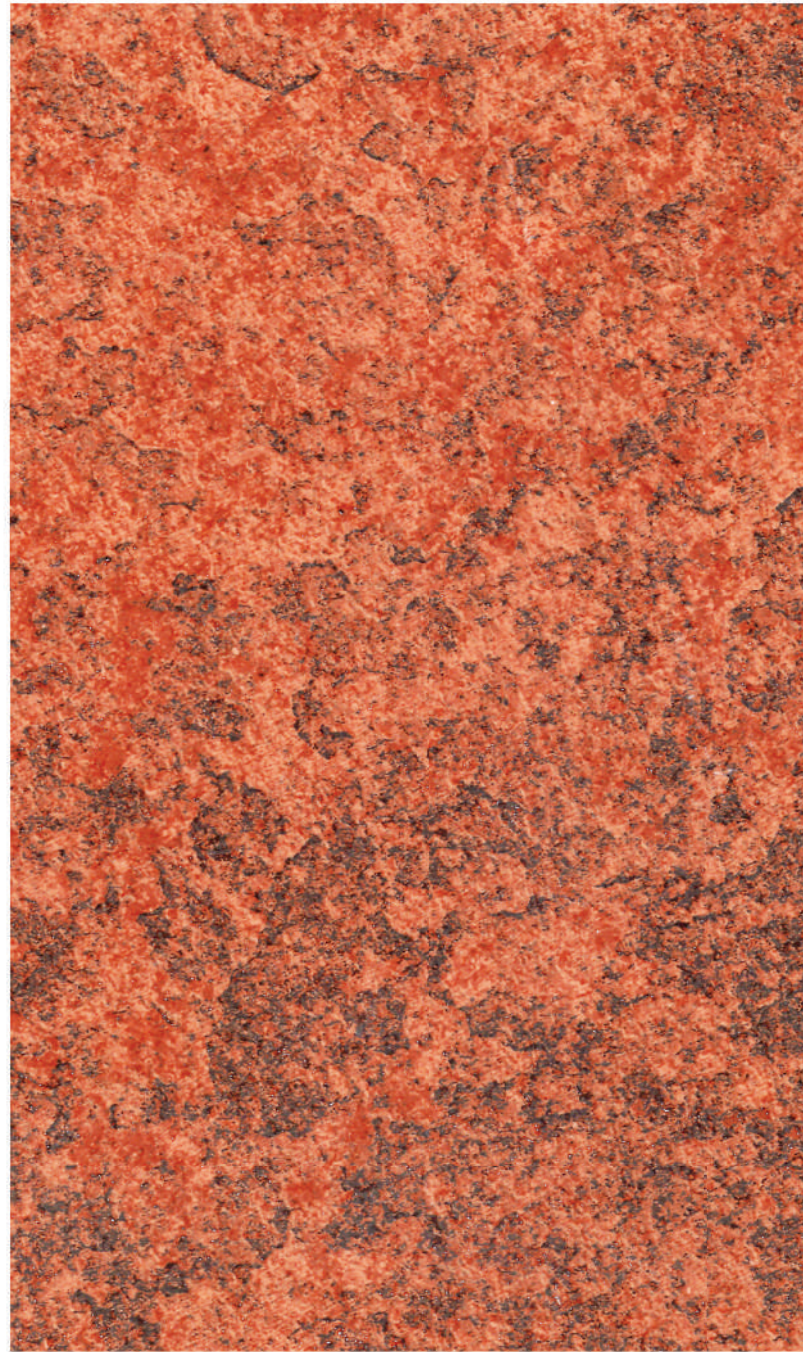
ALSTONE®



AS- 608
Ferrari Red

This is a passionate shade.

According to the Science of Architecture, the hue of fire can be found in this finish. Because of this, the Ferrari Red lends a high level of intensity to the façade and paving of prestigious buildings. People are drawn to this shade, which is especially eye-catching.



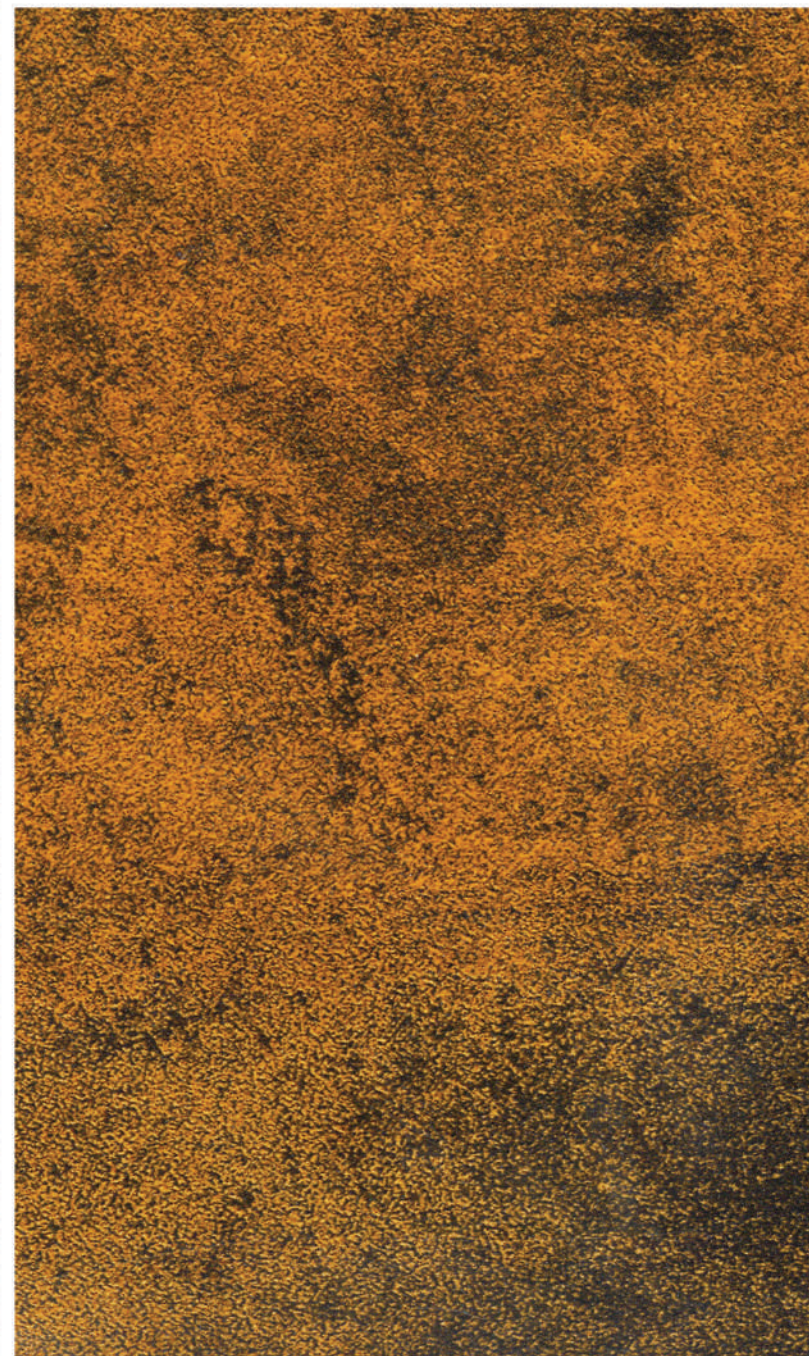
ALSTONE®





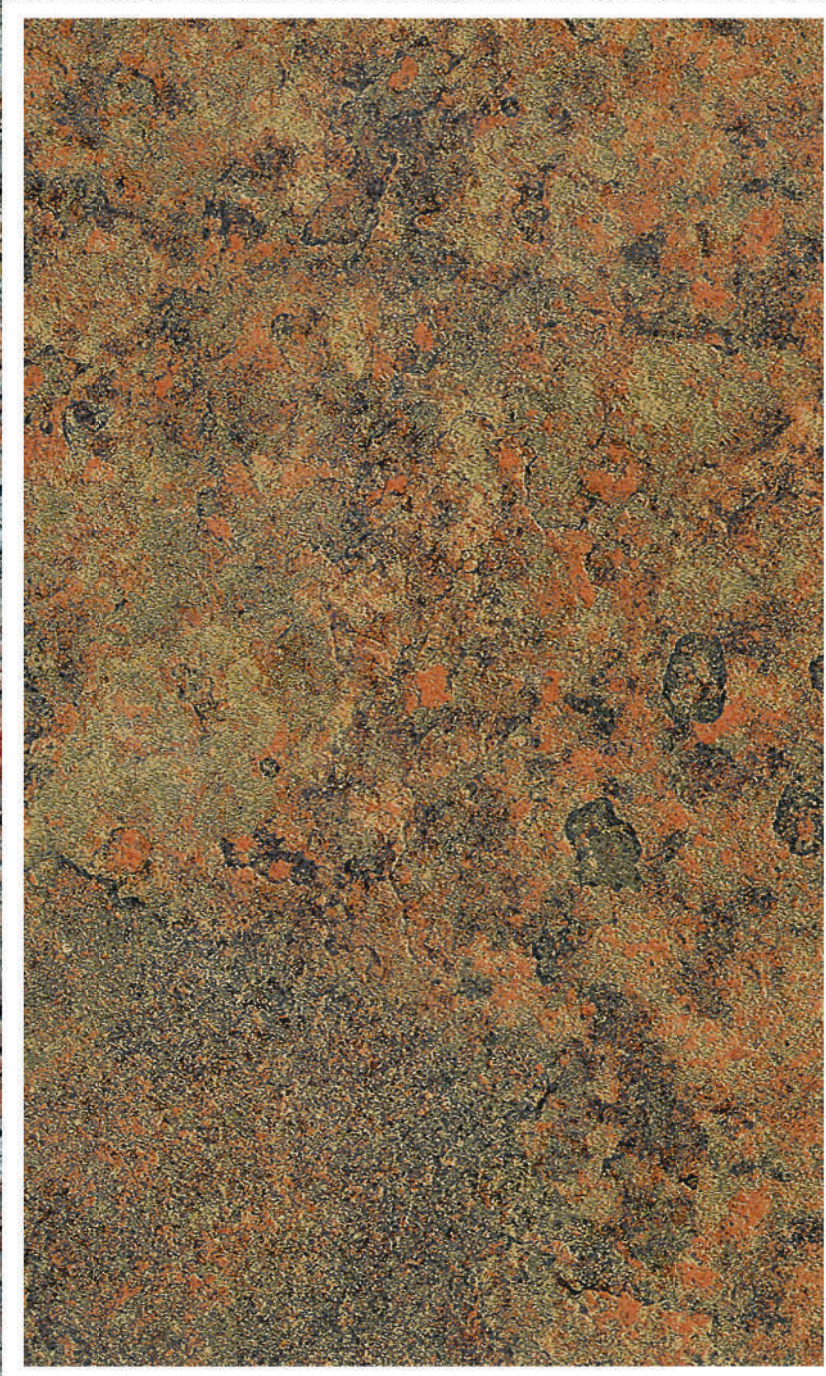
AS- 609
Venice Brown

A combination of brown and grey with the look of creamy-brown weathered hard-wearing stone, it is great both for outdoor & indoor decor. Inspired by featuring quality natural stone, taking its cue from Venetian Architecture, its colour is a full testimony to the charm that evokes memories of splendour and the co-existence of varied stratified civilizations – standing proudly and sharply over the mists of time.



ALSTONE®





AS- 610
Onyx Brown

Onyx Brown is a shade, claimed to help us control our thoughts and create a serene mind. This shade encourages patience, clarity, and focus for deeper meditation.

This is a great material – that stands out from a distance and is a great substrate to have indoors to evoke joy, excitement, celebration and passion.

ALSTONE®



1



2



1

AS- 611 **Brown Castle**

Cast away the ordinary and embrace the stone look that towers into the sky. Timeless and earthy, stone reminds us of the stolidity that keeps its look, when all else decays. Contrast it with water, vibrant foliage and snow - depending on the landscape of the region.

2

AS- 612 **Black Castle**

The black stone finish ACP evokes images of Western Europe, particularly the British Isles and Ireland, with its forbiddingly dour grey castles rising above circling seagulls and crashing sea waves. There is a distinct lack of uniformity in the rough squares and rectangles. This stone-like ACP is great for a finished castle stone veneer and a stacked stone or grouted installation appearance. With its castle-like appearance and its unusually deep grey-black hue - equally ideal for interiors and exteriors.

KEY TECHNICAL SPECIFICATIONS

FR-B1, s1, d0

Product Composition					
S.No.	Specifications	Unit	Standard	4 mm	
1.	Skin Thickness	mm	0.5	0.3
2.	Core Material	Minral filled thermoplastic core	
3.	Panel Weight ($\pm 5\%$)	kg/ml	7.2 ($\pm 5\%$)	6.6($\pm 5\%$)
Product Tolerances					
4.	Panel Thickness	mm	± 0.2	
5.	Panel Width (1220, 1500mm)	mm	± 2	
6.	Panel Length (Upto 6000mm)	mm	+4	
7.	Bow(Length or Width)	%	Max 0.5	
8.	Squareness	mm	Max 5	
Mechanical Properties					
9.	Tensil Strength	Mpa	ASTM E8	45	49
10.	0.2% Proof Stress	Mpa		42	27
11.	Elongation	%		≥ 5	
12.	Modulus of Elasticity	Mpa		70000	
Thermal Properties					
13.	Linear Thermal Expansion	mm/m/100°C	(EN 1999 1-1)	2.4	
14.	Deflection Temprature	°C	(ASTM D 648)	≥ 110	≥ 100
15.	Temperature Resistance	°C	(ASTM C 518)	-50+80	
Acoustical Properties					
16.	Sound Trasmission Loss(Rw)	dB	(ASTM E 413)	27	
Fire Properties					
17.	Reaction to fire	As per international standards	(EN 13501-1)	Class B1, s1, d0	
18.	Reaction to fire		(DIN 4102-1)	Class B1, s1, d0	
19.	Self ignition temperature not less than 343 °C		(ASTM D 1929)	PASS	
Surface Finish Characteristics					
20.	Paint finishes	AAMA 2605-13	PVDF/FEVE	
21.	Gloss@60°C	%		20-35%	
22.	Pencil Hardness		Min HB	
23.	Backside Service Coating		PE	

ALSTONE[®] PRODUCT RANGE

ALSTONE[®]
Evolution & Classic

ALSTONE[®] FR

ALSTONE[®] HPL
Feel The Nature

LOUVERS
LIMITLESS AS YOUR IMAGINATION

POWERED BY **ALSTONE[®]**

ALSTONE[®]
ALCOMB
Aluminium Honeycomb Panels

ALSTONE[®]
ANTIq
BEAUTIFULLY RUSTIC

ALSTONE[®]

INDIA'S
No.1 18+ YEARS
Old Trusted Brand



ALSTONE®

Corporate Office: Alstone Manufacturing Pvt. Ltd. 15th Floor, Vijaya Building,
17, Barakhamba Road, Connaught Place, New Delhi- 110001

Manufacturing: 1393, Langha Road, Industrial Area, Dehradun, Uttarakhand.
For enquiries: info@alstoneindia.com. Toll Free: 1800-1233-123.

www.alstoneindia.com

[f](#) [in](#) [ig](#) [t](#) [p](#) [v](#) /alstonepanels