



Greenlam

L A M I N A T E S

1 MM THICKNESS



A TOUCH *of* NATURE



1801 SUD
Sapele Brunet



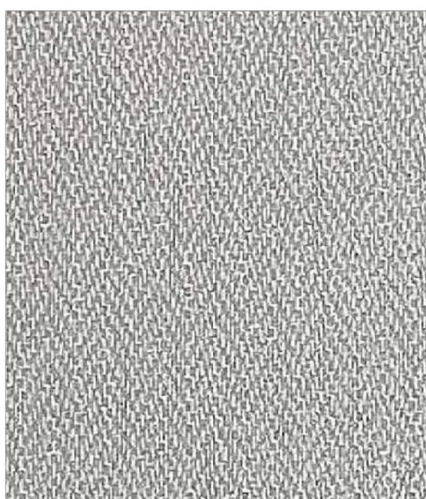
1064 SUD
Cherry Berry



1711 SUD
Siam Teak



1056 WWS
Dakota



1565 SUD
Pale Herringbone



1010 UBL
Ornate Oak



1085 SUD
Wenge Crown



1702 SUD
Cherry



1042 SUD
Stately Larch

1801 Suede
Sapale Brunet


Green Touch

1064 - Suede
Cherry Berry

Green Touch

**1711 - Suede
Siam Teak**

Green Touch

The image features a vertical wood-grain texture in a medium brown color, filling the entire frame. The grain lines are closely spaced and run vertically, creating a natural, organic pattern.

**1056 Suede
Dacota**

Green Touch

1565- Suede
Pale Herringbone

Green Touch

**1010 - Suede
Ornate Oak**


Green Touch

1085 - Suede
Wenge Crown

Green Touch

1702
Suede Cherry

Green Touch

The image shows a vertical wood grain texture in shades of brown and tan. The grain is oriented vertically and has a slightly irregular, natural appearance. The text is overlaid on the top right and bottom right corners.

**1402 Suede
Stately Larch**

Green Touch



M-8 Basanti Colony, Rourkela