



ALSTONE[®]
ANTIQUE
BEAUTIFULLY RUSTIC

BEAUTIFULLY RUSTIC EXTERIOR CLADDING

THE LEGACY OF
18+ YEARS OF DELIVERING
OVER 500+ MILLION Sq. Ft.
OF ACPs,
NOW DELIVERS EVEN MORE.

ALSTONE[®]

BEAUTIFULLY RUSTIC

ALSTONE® Antiq is a series of Vintage Alstone - uniquely crafted, expressive and timeless. A natural coating gives the material a truly unique charm, and individual weathering features add a nostalgic touch. When combined with modern architecture, the imperfection and irregularity of the 'random' appearance open up a wide range of new aesthetics.

"Concrete" that doesn't moss, 'rusty steel' that doesn't bleed, "copper with a patina" but no rust marks when it rains, or 'oxidised metal' that doesn't corrode - the matt surfaces of ALSTONE® Antiq holds back time, halting the weathering processes that are typical for these materials and preserving the chosen design.

ALSTONE®
ANTIq
BEAUTIFULLY RUSTIC

WHY ALSTONE ANTIQ?

ALSTONE® Antiq, which is a result of our high-quality Alstone Coiled Coating- provides very durable and UV-resistant design surfaces for outdoor use, specially on facades.

The texture and external surface of the series are inspired by a timeless chain that combines grungy, brushed metal and a controlled and weathered natural corrosion look, lending itself a distinct and unique property never seen before.

UNIQUE FEATURES:



UNIQUE
FINISHES



READY
TO USE



100%
MAINTENANCE FREE



WATER &
TERMITE PROOF



WIDE RANGE
OF COLOURS



IDEAL FOR RESIDENTIAL
& COMMERCIAL BUILDINGS

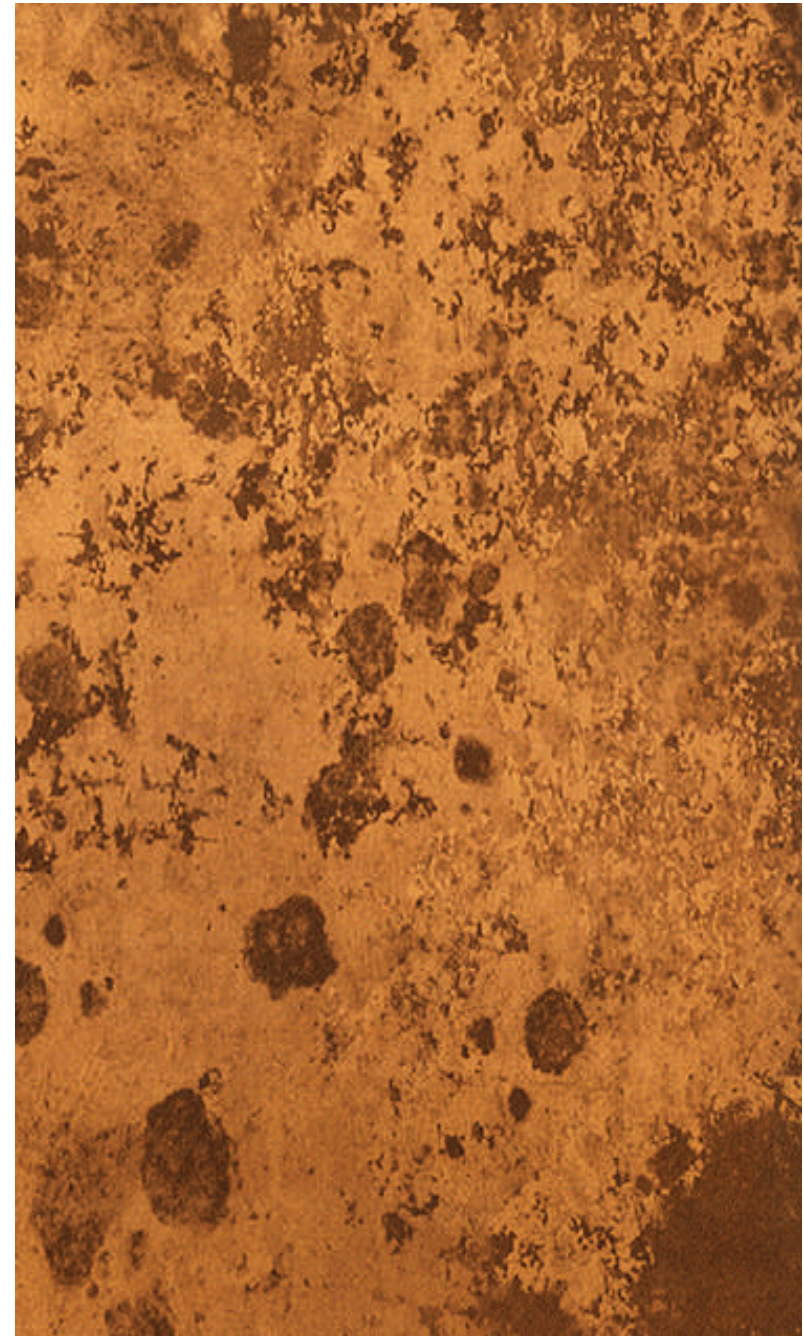
ALSTONE®



AR 901

Corten Steel

The look embraces all things patrician and noble - especially antique pieces at home and gives off an aura of good living that has aged gracefully over time.



ALSTONE®



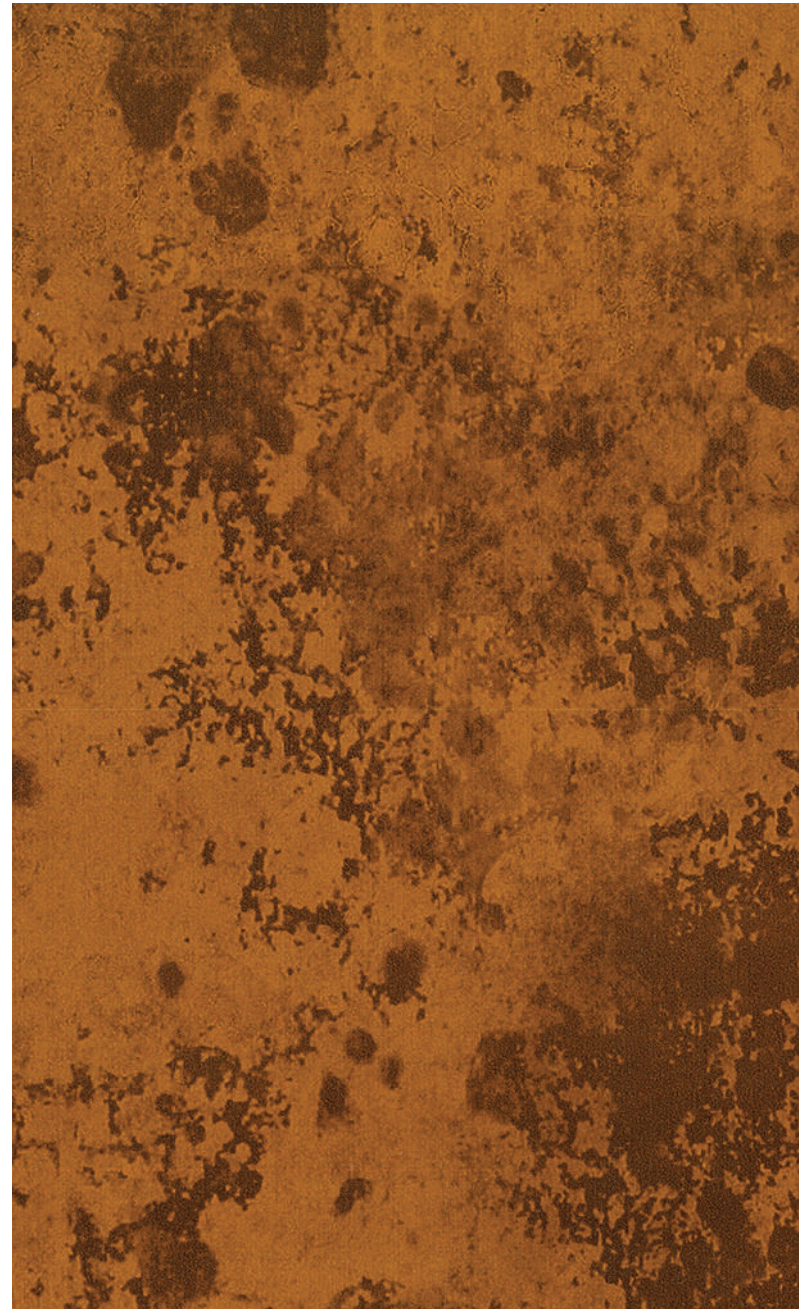
#123

41Q 7761

AR 902

Rusty Copper

A magnificent shade that looks really dreamy to flaunt in your interior or exterior décor and let people notice the beauty of your residential and commercial places. It's aesthetic touch of elegance will be perfect to tell any story of timeless beauty of metal in any building.



ALSTONE®



AR 903

Bronze Patina

The Copper component in Bronze Patina - oxidizes to generate cuprite, malachite, and azurite on antique bronzes. Some bronze core may remain, but the surface gradually reverts to the ore, diminishing metal the content. This ancient yet lasting through centuries looks antiquated and prestigious.



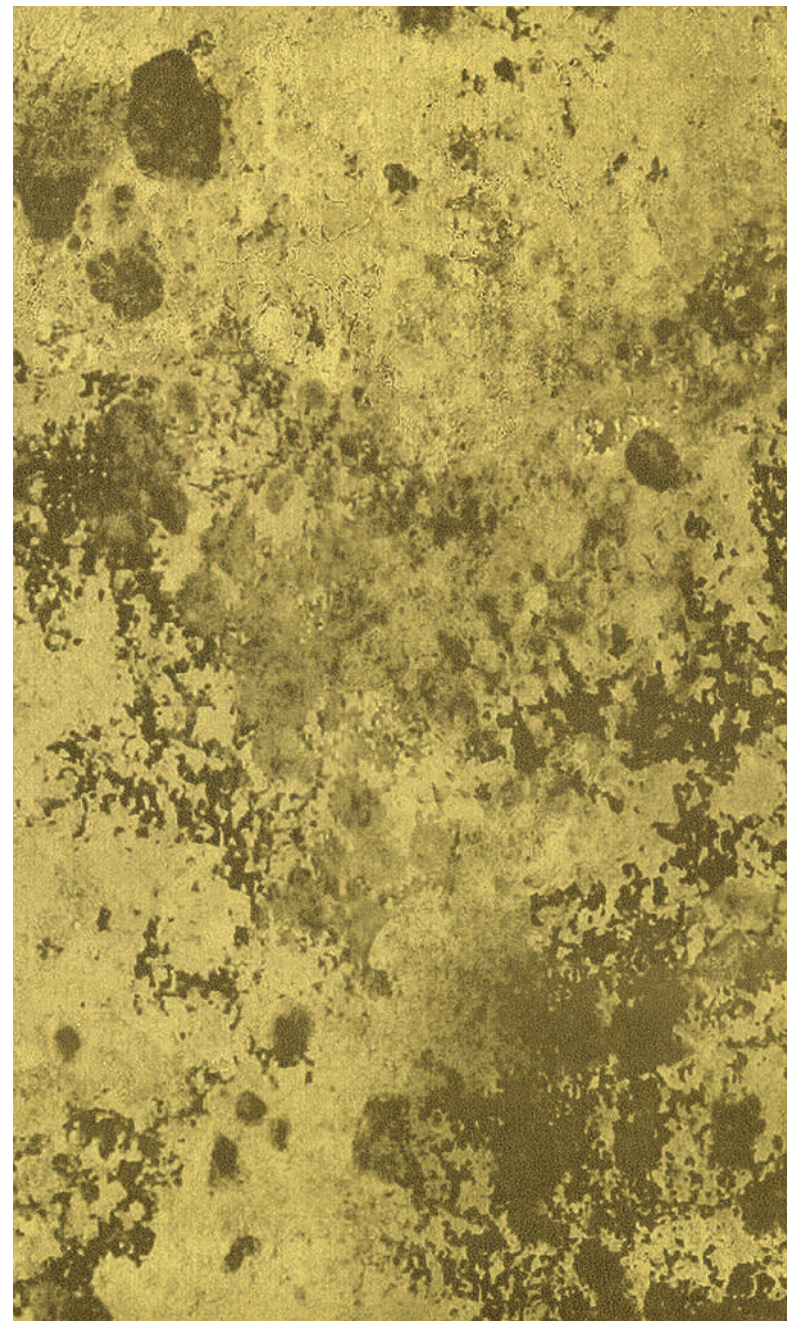
ALSTONE[®]



AR 904

Rough Brass

Brass is a versatile Copper-zinc alloy. While polished brass is gold and lustrous, Rough Brass has a darker, low-luster finish to look aged. It absorbs lighter than it reflects and is browner. Rough Brass is a brownish-gold tint, aged to look warm and weathered over the years.



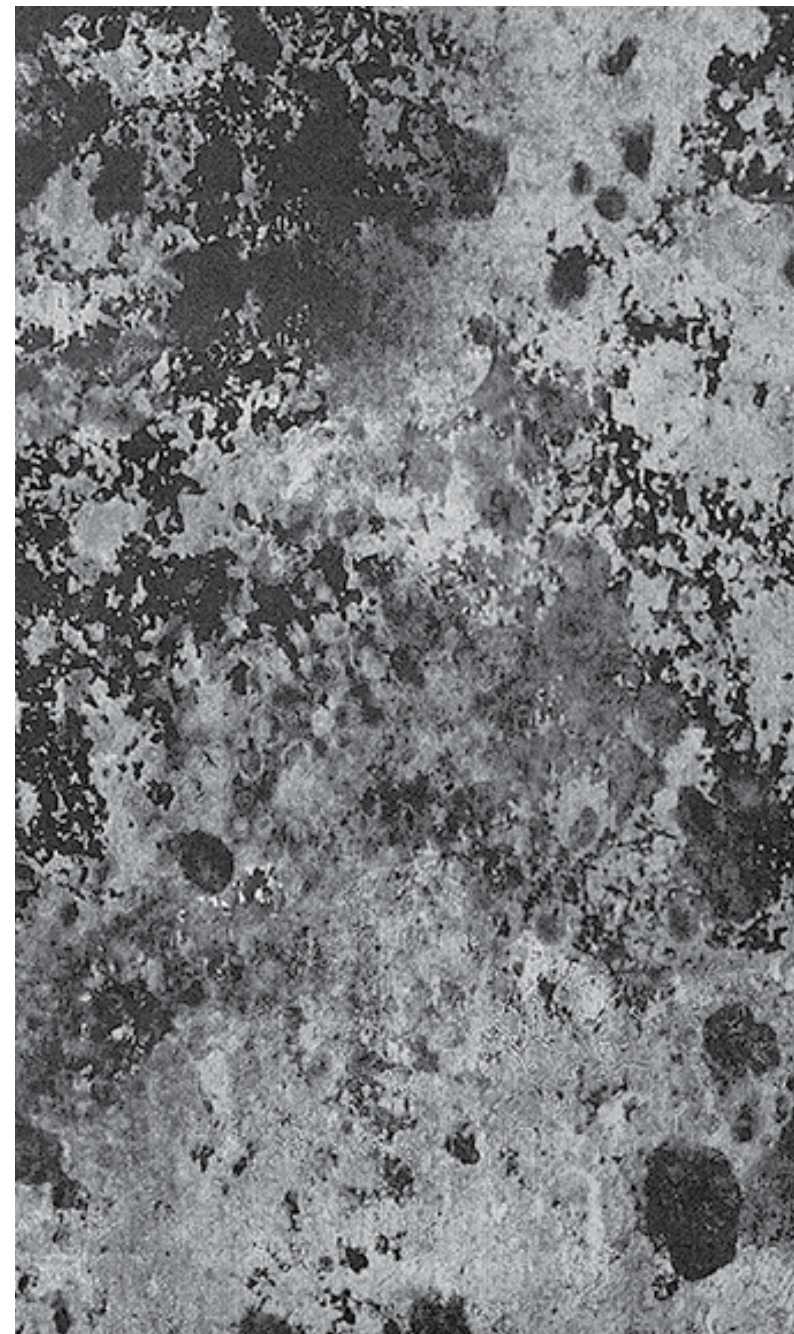
ALSTONE®



AR 905

Industrial Iron

Industrial Iron can be used to create an industrial or factory look within a home or a business in the category, as well as a startup or manufacturing environment. Industrial iron is a trendy material when used in conjunction with touches of black metal, a feel of a metal foundry, billowing steam, and the glimmer of a metal fireplace.



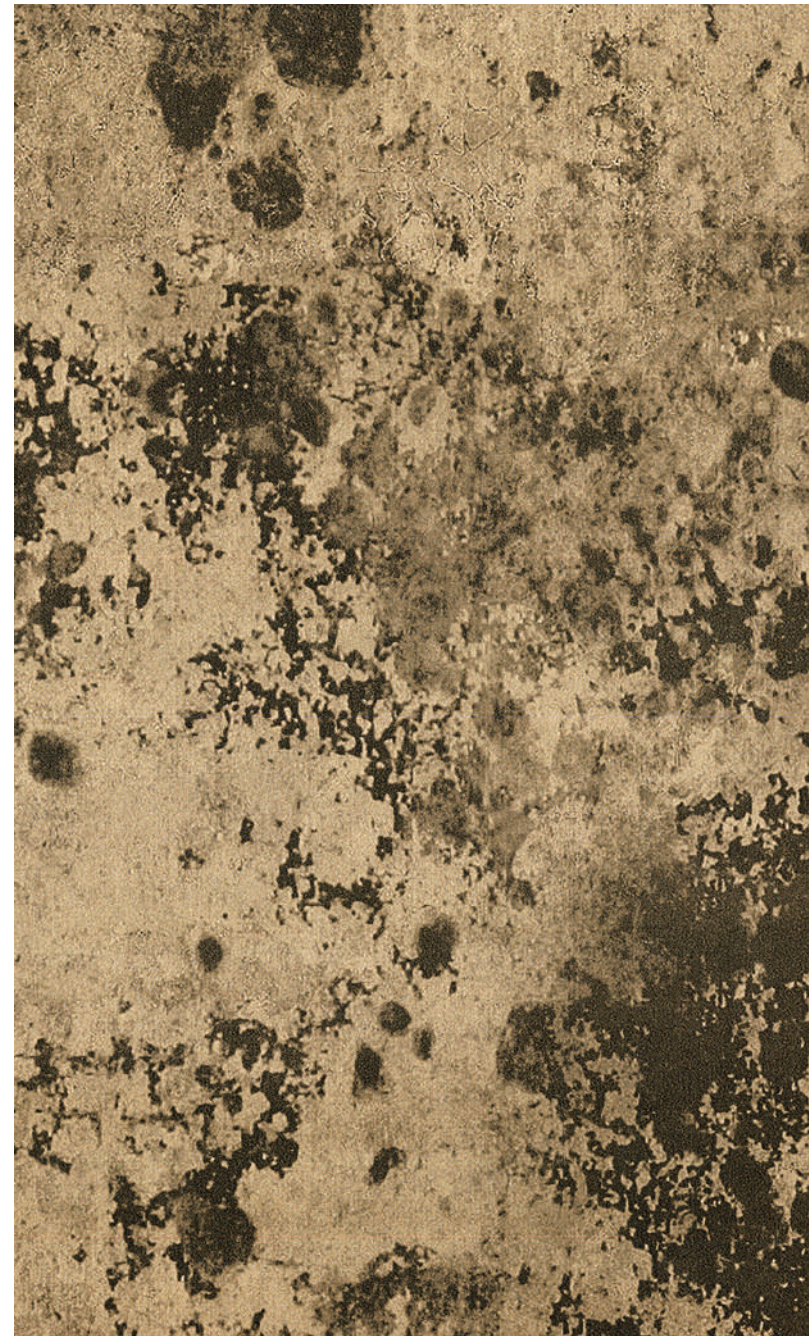
ALSTONE®



AR 906

Gilded Rust

Gilded Rust is a copper and worn steel mix that captures natural corrosion's deep reds and browns. We added a deep gloss matte coat of pearlized rust for complexity and brilliance.



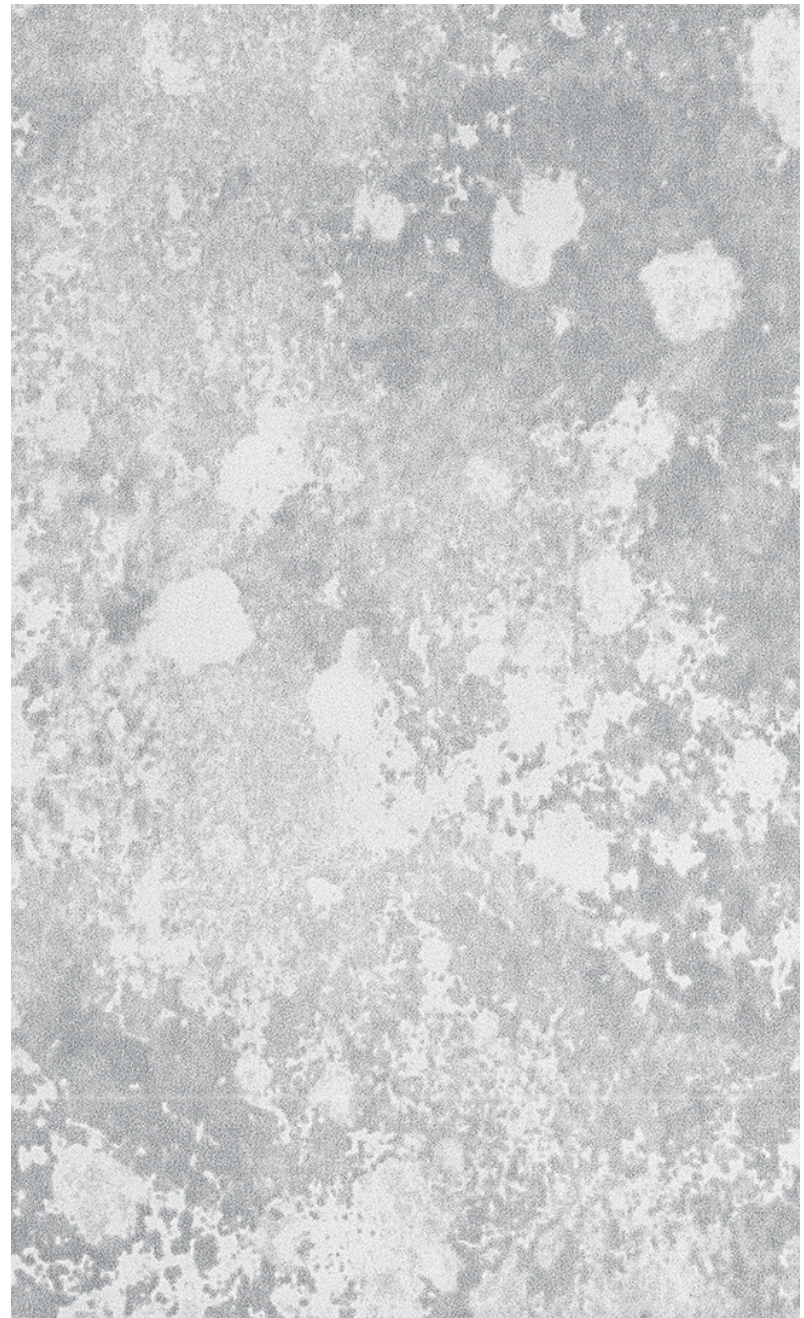
ALSTONE®



AR 907

Rough Concrete

A screed-and-trowel concrete finish is uneven looking but realistic. Using screed, concrete surfaces are levelled. Rough Concrete surfaces have unique patterns. This finish is popular among minimalists and works well indoors and outdoors. They resist abrasion, weather, and dampness.



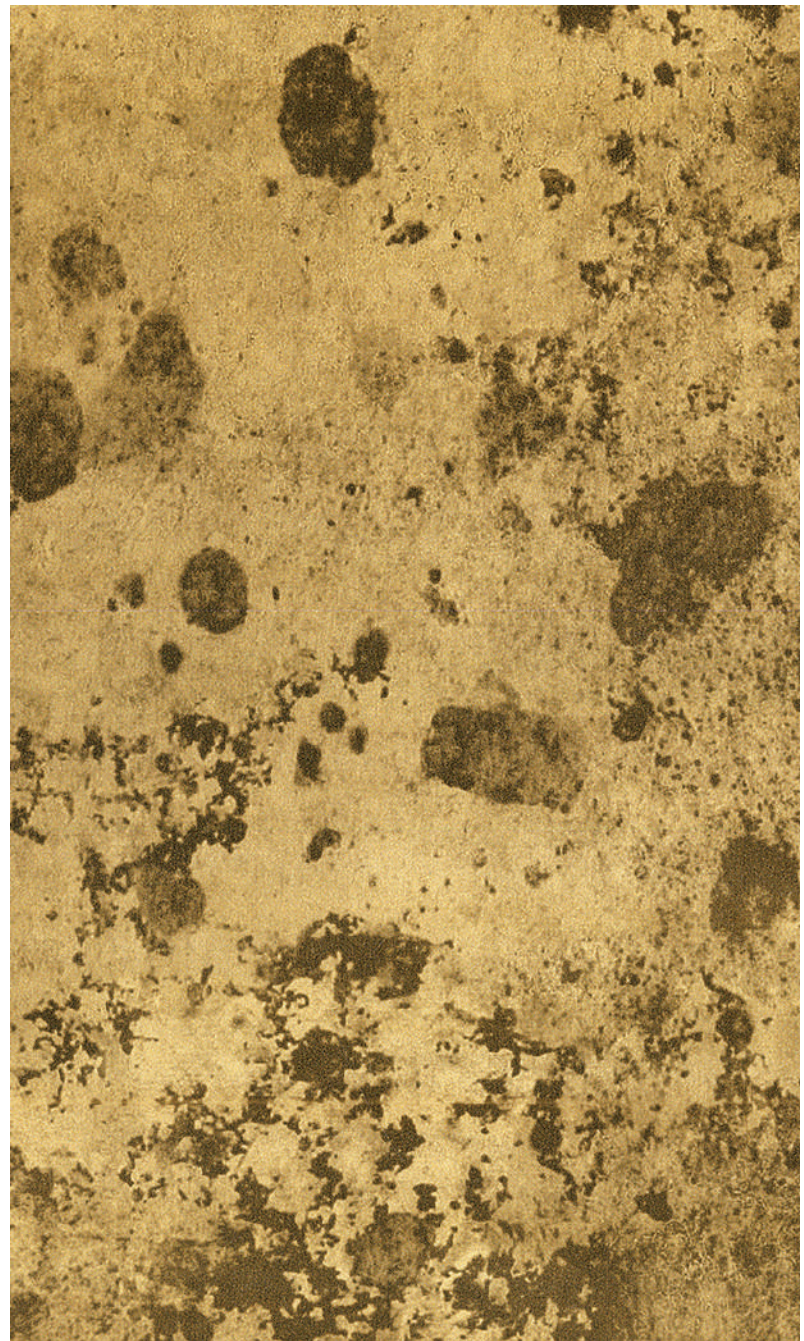
ALSTONE®



AR 908

Rusty Gold

Gold, the least reactive precious metal, doesn't corrode. But because most gold products aren't pure, they tarnish. This tarnish can be an interesting color to play with in residential and commercial buildings.



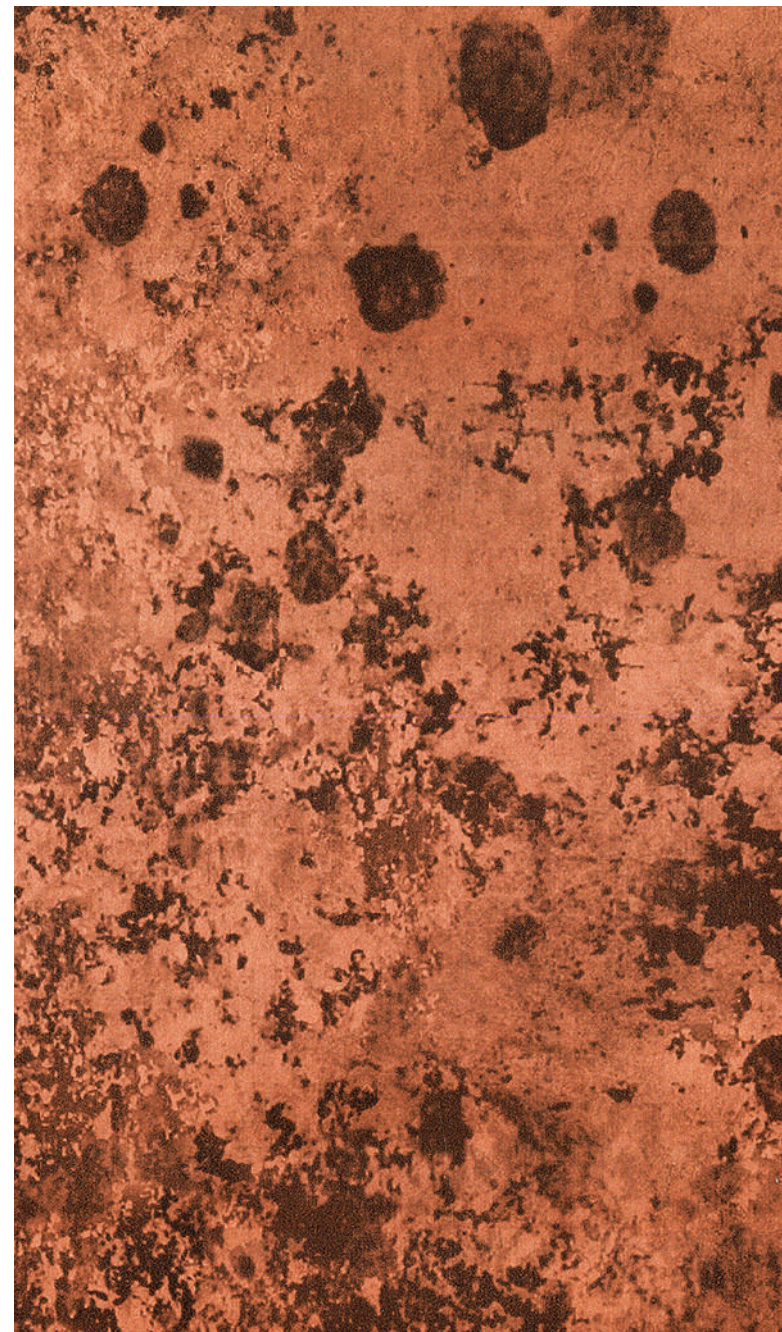
ALSTONE[®]



AR 909

Nectarina Rust

Nectarine is a seasonal shade, bright and cheerful. When exposed to the weather, a nectarine rust colour develops over time. While it seems to rustle, it also reminds us of autumn – when copper-gold leaves are carried away by sharp, dry winds.



Kfi Y TECHNICAL SPECIFICATIONS

FR-B1, s1, d0

Product Composition					
S.No.	Specifications	Unit	Standard	4 mm	
1.	Skin Thickness	mm	0.5	0.25
2.	Core Material	Minral filled thermoplastic core	
3.	Panel Weight (±5%)	kg/mL	7.2 (±5%)	6.4(±5%)
Product Tolerances					
4.	Panel Thickness	mm	±0.2	
5.	Panel Width (1220, 1500mm)	mm	±2	
6.	Panel Length (Upto 6000mm)	mm	+4	
7.	Bow(Length or Width)	%	Max 0.5	
8.	Squareness	mm	Max 5	
Mechanical Properties					
9.	Tensil Strength	Mpa	ASTM E8	45	49
10.	0.2% Proof Stress	Mpa		42	27
11.	Elongation	%		≥5	
12.	Modulus of Elasticity	Mpa		70000	
Thermal Properties					
13.	Linear Thermal Expansion	mm/m/100°C	(EN 1999 1-1)	2.4	
14.	Deflection Temprature	°C	(ASTM D 648)	≥110	≥100
15.	Temperature Resistance	°C	(ASTM C 518)	-50+80	
Acoustical Properties					
16.	Sound Trasmission Loss(Rw)	dB	(ASTM E 413)	27	
Fire Properties					
17.	Reaction to fire	As per international standards	(EN 13501-1)	Class B1, s1, d0	
18.	Reaction to fire		(DIN 4102-1)	Class B1, s1, d0	
19.	Self ignition temperature not less than 343 °C		(ASTM D 1929)	PASS	
Surface Finish Characteristics					
20.	Paint finishes	AAMA 2605-13	PVDF/FEVE	
21.	Gloss@60°C	%		20-35%	
22.	Pencil Hardness		Min HB	
23.	Backside Service Coating		PE	

ALSTONE[®]

PRODUCT RANGE

ALSTONE[®]
Evolution & Classic

ALSTONE[®] FR

ALSTONE[®] | HPL
Feel The Nature

LOUVERS
LIMITLESS AS YOUR IMAGINATION

POWERED BY | **ALSTONE[®]**

ALSTONE[®]
ALCOMB
Aluminium Honeycomb Panels

Stonera **ALSTONE[®]**
WORK of ART!

ALSTONE[®]

INDIA'S **No.1** **18+ YEARS**
Old Trusted Brand



ALSTONE®

Corporate Office: Alstone Manufacturing Pvt. Ltd. 15th Floor, Vijaya Building,
17, Barakhamba Road, Connaught Place, New Delhi- 110001

Manufacturing: 1393, Langha Road, Industrial Area, Dehradun, Uttarakhand.
For enquiries: info@alstoneindia.com. Toll Free: 1800-1233-123.

www.alstoneindia.com

[f](#) [in](#) [@](#) [t](#) [p](#) [v](#) /alstonepanels